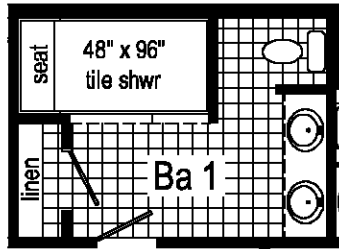
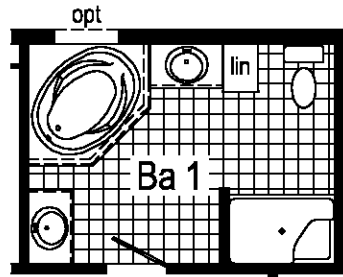


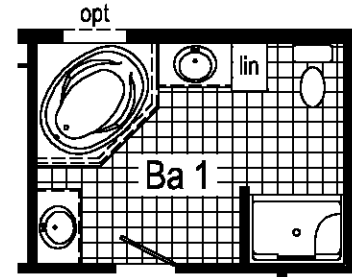
NS309-A



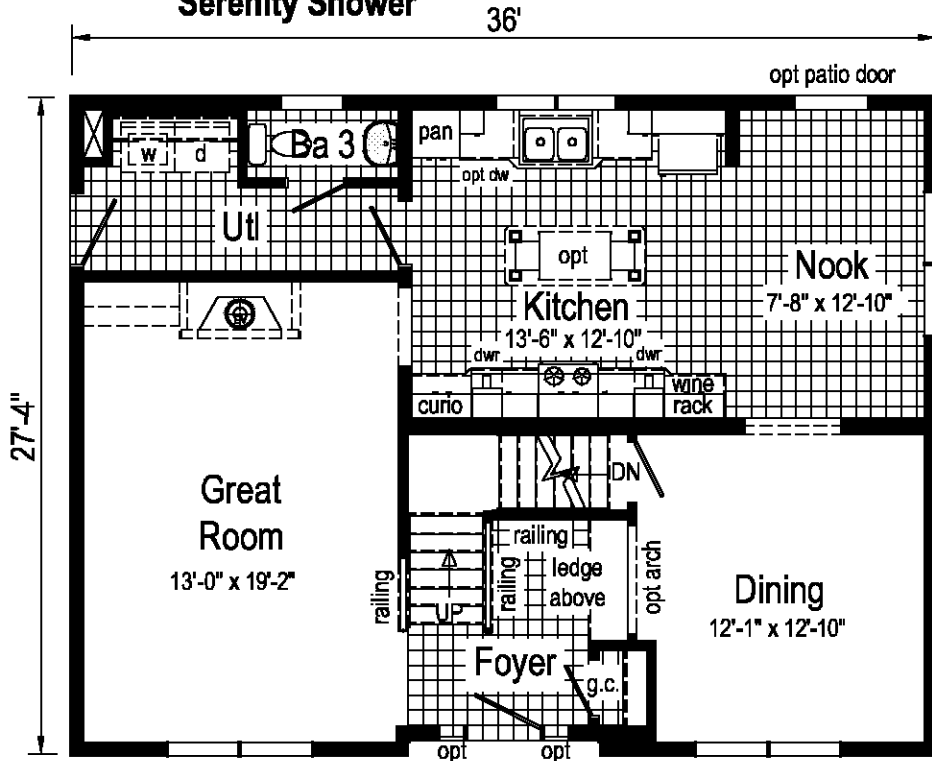
Optional Serenity Shower



Opt. 54\"/>

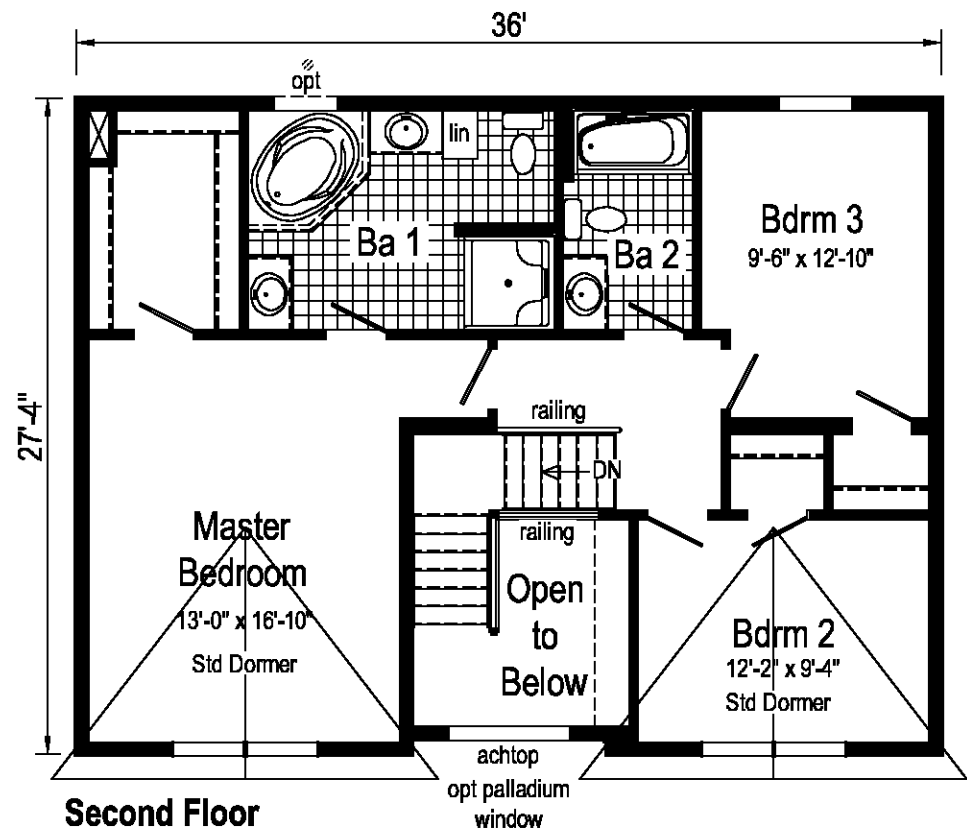


Opt. 48\"/>



First Floor

NS309-A 2836 Approx. 1961 Sq. Ft.



Second Floor

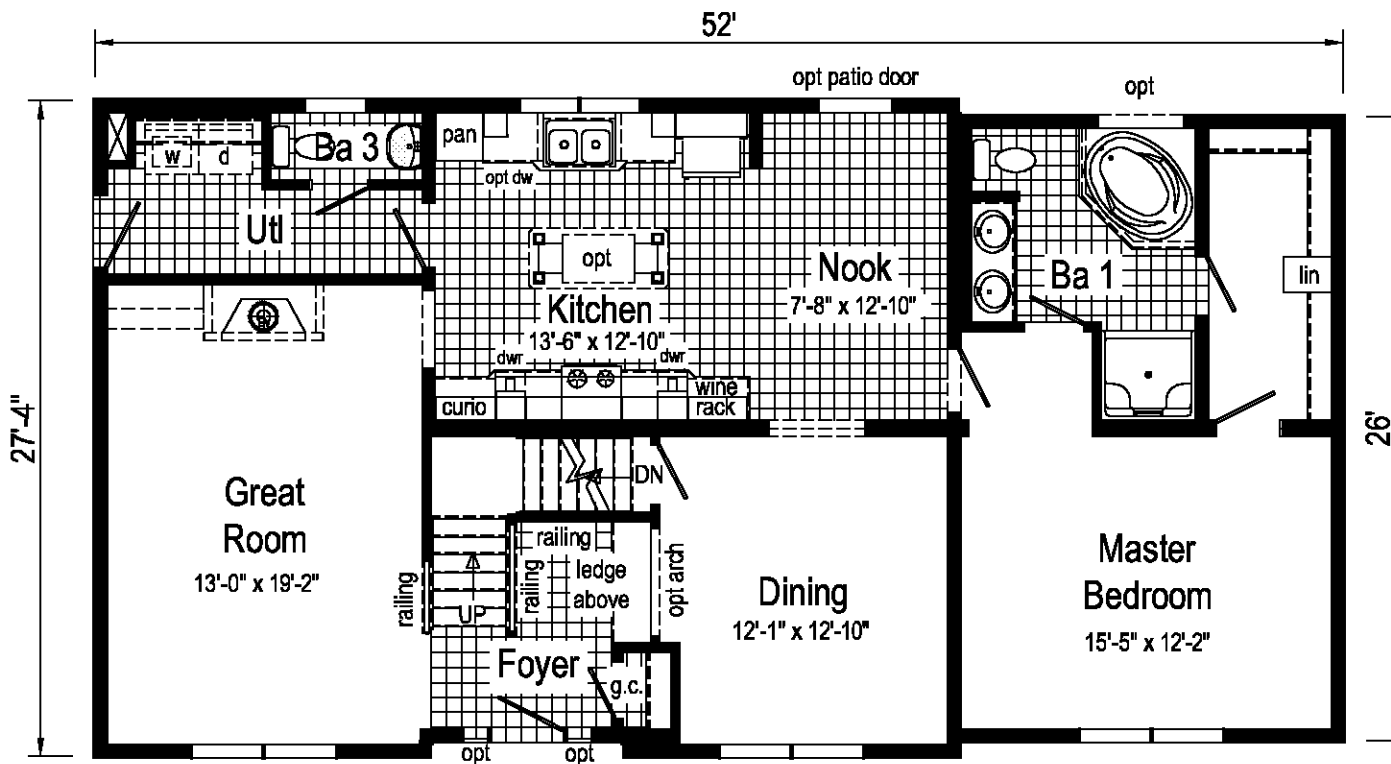
Note: Because of varying state requirements and optional equipment, some or all of the utility locations might change per floor plan (ie: furnaces, w/h, stairwell). Consult your sales representative for exact specifications.

Lone Star

Model/Eng. No.:
NS309-A

Pg.: LIT

Builder: Literature	Callout: 2836	Revisions		7-16-14	Scale: 1/8" = 1'-0"	Date: 12/27/2011	Cust. -	Reference: NA	Model/Eng. No.:
		Date	Number			Drawn By:	Dir. -		NS309-A
		4/6/2012				KS	S/N: .		LIT



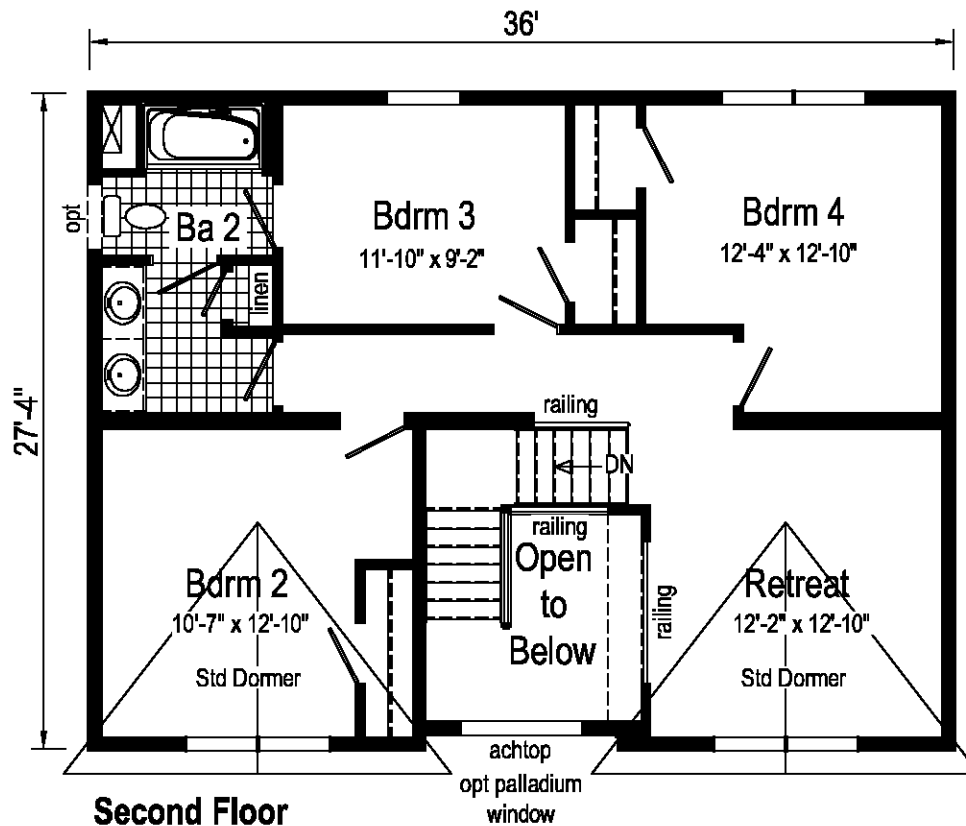
First Floor

NS309-MA 2852 Approx. 2378 Sq. Ft.

Note: Because of varying state requirements and optional equipment, some or all of the utility locations might change per floor plan (ie: furnaces, w/h, stairwell). Consult your sales representative for exact specifications.

North Star

Builder:	Callout: 2852	Revisions		Scale: 1/8" = 1'-0"	Date: 12/28/2011	Cust: -	Model/Eng. No.:
Title: Literature		Date	Number	Drawn By: KS	Reference: NA	Dir: -	NS309-MA
		4/6/2012				S/N: .	Pg.: LIT



Note: Because of varying state requirements and optional equipment, some or all of the utility locations might change per floor plan (ie: furnaces, w/h, stainwell). Consult your sales representative for exact specifications.

North Star

Builder:	Callout: 2852	Revisions		Scale: 1/8" = 1'-0"	Date: 12/28/2011	Cust: -	Model/Eng. No.: NS309-MA
		Date	Number				
Title: Literature 2				Drawn By: KS	Reference: NA	Dir: -	Pg.: LIT-2