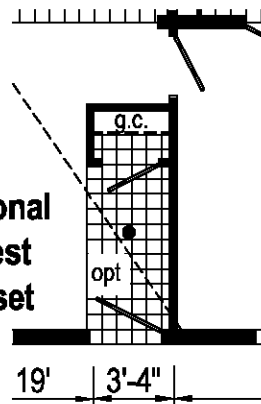


**Optional Stairwell**  
(omits linen)

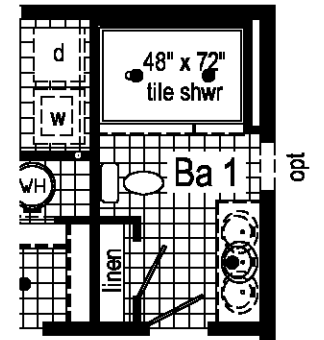
3A2050-P 2848 Approx. 1280 Sq. Ft.

- B = Std. bump-out overhead cabinets at std cabinet height.
- S = Std. 4" staggered bump-out overhead cabinets
- = Std. can light

**Optional Guest Closet**



**Optional 4'x6' Walk-In Tile Shower**  
(reduces master closet)



Village

Builder: Commodore Homes of Pennsylvania	Callout: 2848	Revisions		Scale: 1/8" = 1'-0"	Date: 8/21/18	Cust. -	Model/Eng. No.: 3A2050-P
		Date	Number				
Title: Literature				Drawn By: OY	Reference: 3A240-A	Dr. -	Pg.: LIT