

# The Bungalow

2 Bedroom

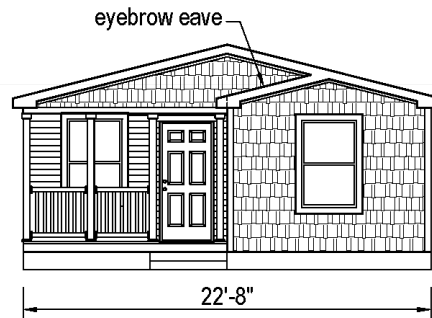
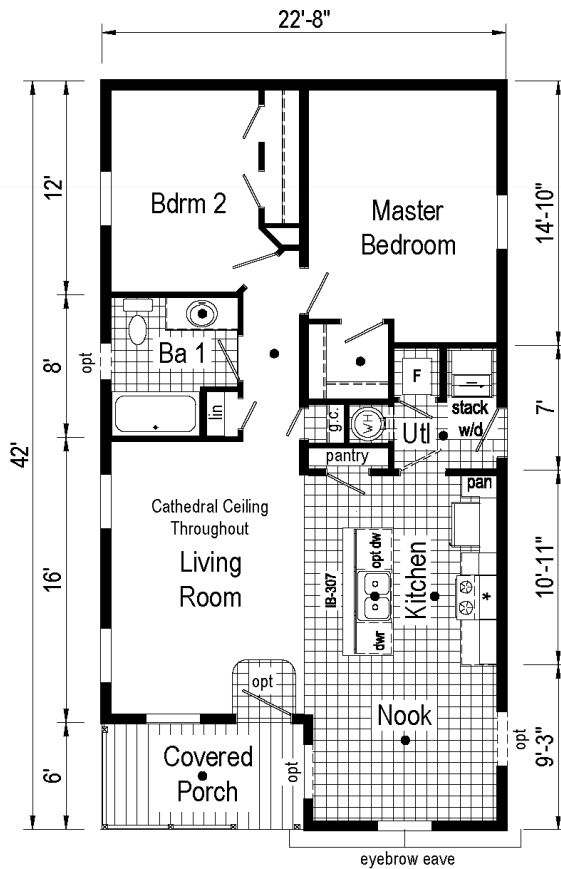
1 Bath

24 x 46 (42) / 952 s.f.



[www.GoVillageHomes.com](http://www.GoVillageHomes.com)

1083 US Route 2, Berlin, VT 05602-8245  
(802) 229-1592



**Construction:**  
Double-Wide / Multi-Section  
Manufactured Home

**Color:**  
Espresso / White

*Our Pricing includes Delivery, Installation, Sewer & Water Hook-Up, and Tax (if applicable)*

*[Please see an Installation Guide & Home Consultant for details]*

## Upgrades

- 2' Stretch in Bedrooms
- Energy Star (Extra Air Sealing, Insulation & More)
- Protective Wind & Weather Wrap under Siding
- Ice & Water Shield in Roof
- Espresso Market Square Premium Vinyl Siding
- Shake Vinyl Siding Accent at Front Gable End
- 3 1/2" Lineal Trim on All Windows
- Craftsman (Front) & 9-Lite (Rear) FG Exterior Doors
- Extra Vinyl Window in Bathroom & Nook
- Exterior Water Faucet / 40 Gallon Water Heater
- Interior Water Shut-Off Valves Where Accessible
- In-House Main Water Line Shut-Off in Utility Room
- Perimeter Heat Ducts & Registers / 200 AMP Panel Box
- Rustic Wainscot, Trim & Casings in Living Room & Nook
- Hardwood Hickory Cabinets
- Ship Lap Accent Wall in Living Room
- Black Cabinet Hardware/Lever Passage Sets on Interior Doors
- Interior Door with Return Air Vent at Utility Room
- Vinyl Flooring replacing Carpet in Living Room
- 8" Deep Stainless Steel Kitchen Sink
- Hi-Rise Kitchen Sink Faucet with Sprayer
- Microwave over the Gas Range (Plug for Electric Range) & Tall Tub Dishwasher (Frigidaire Appliances)
- 1-Piece Fiberglass Tub/Shower in Bathroom
- China Sink in Bathroom / Metal Lever Sink Faucet in Bathroom
- Linen Cabinet over Toilet in Bathroom
- 4" Laminate Countertop Backsplashes Throughout
- (3) Additional LED Recessed Lights in Kitchen
- Ceiling Lights in Bedrooms / 2-Arm Wall Light in Bathroom
- (2) TV Jacks / Phone Jack

Village Homes has tried to ensure that our printed materials for all of our homes are comprehensive and factual. We reserve the right, however, to make changes without notice in pricing, options added, specifications, materials, etc. Due to continuous product development and improvements, your home may differ in manufacturing, color and options available at the time of construction. Specifications, dimensions and measurements on printed materials are approximates based on in-house design and/or engineering drawings. Any included images are artist renderings and not intended to be an accurate representation of the home. Renderings and floor plans may be shown with optional features or third party additions.

Rev. 11/14

# Installation Guide

Our Pricing includes DELIVERY, INSTALLATION and TAX (if applicable)

DOUBLE-WIDE & SINGLE-WIDE Home Installations Include:	VILLAGE HOMES	
SET, LEVEL & LAG HOME TOGETHER (DW)	✓	
SEAL MATE LINE / WALLS WITH EXPANSION FOAM	✓	
FINISH ROOFING	✓	
FINISH SIDING	✓	
HANG ALL INTERIOR DOORS / FINISH MATE WALL	✓	
SEAM CARPETS & FINISH FLOORING	✓	
<b>INSTALL WATER LINE &amp; HEAT TAPE TO SOURCE IN SLAB</b> Run to Slab by Others	✓	
<b>INSTALL SEWER LINE TO DRAIN(S) IN SLAB</b> Run to Slab by Others	✓	
INSTALL ANCHORS / TIE DOWNS	✓	
<b>INSTALL PREMIUM WHITE VINYL SKIRTING</b> Rapid Wall & R-Cotec Insulated Products - Optional	✓	
INSTALL (2) SETS OF FIBERGLASS STEPS W/ RAILING	✓	
CLEAN HOME (Damp Wipe Surfaces, Broom & Vacuum)	✓	
REMOVE TRASH	✓	
REMOVE AXLES / TIRES (DW : Tires & Axles / SW : Tires)	✓	
1 YEAR MANUFACTURERS WARRANTY (New Homes)	✓	
10 YEAR LIMITED STRUCTURAL WARRANTY (New Homes)	✓	
HEATING / COOKING FUEL TANK(S) Buyer's Fuel Provider is Responsible for Tanks, Connections, Conversion to LP and Diagnostics	<i>Customer</i>	
CONNECT POWER SOURCE TO ELECTRICAL PANEL	<i>Optional</i>	
EXCAVATION / DRIVEWAY / LAWN	<i>Optional</i>	
CONCRETE SLAB OR FOUNDATION	<i>Optional</i>	
INSTALL PEDISTAL, METER & POWER LINE (Pole to Slab/Basement)	<i>Optional</i>	
ARTESIAN WELL OR CONNECT TO MUNICIPAL WATER Pressure Tank & Switch may be Required for Wells	<i>Optional</i>	
SEPTIC SYSTEM OR CONNECT TO MUNICIPAL SEWER	<i>Optional</i>	
GARAGE / DECK / PORCH	<i>Optional</i>	

**FINANCING ASSISTANCE | IN-HOUSE CUSTOM PLAN DESIGN**

**EXCAVATION | SITE DEVELOPMENT | TRADES WELCOME**

**LAND FOR SALE | LOTS FOR RENT**

**ON-TIME & ON-BUDGET!**



1083 US Route 2, Berlin, VT 05602 | (802) 229-1592 | sales@Village-Homes.com

**Vermont & New Hampshire's MOST TRUSTED builder  
of affordable, quality Modular & Manufactured Homes**