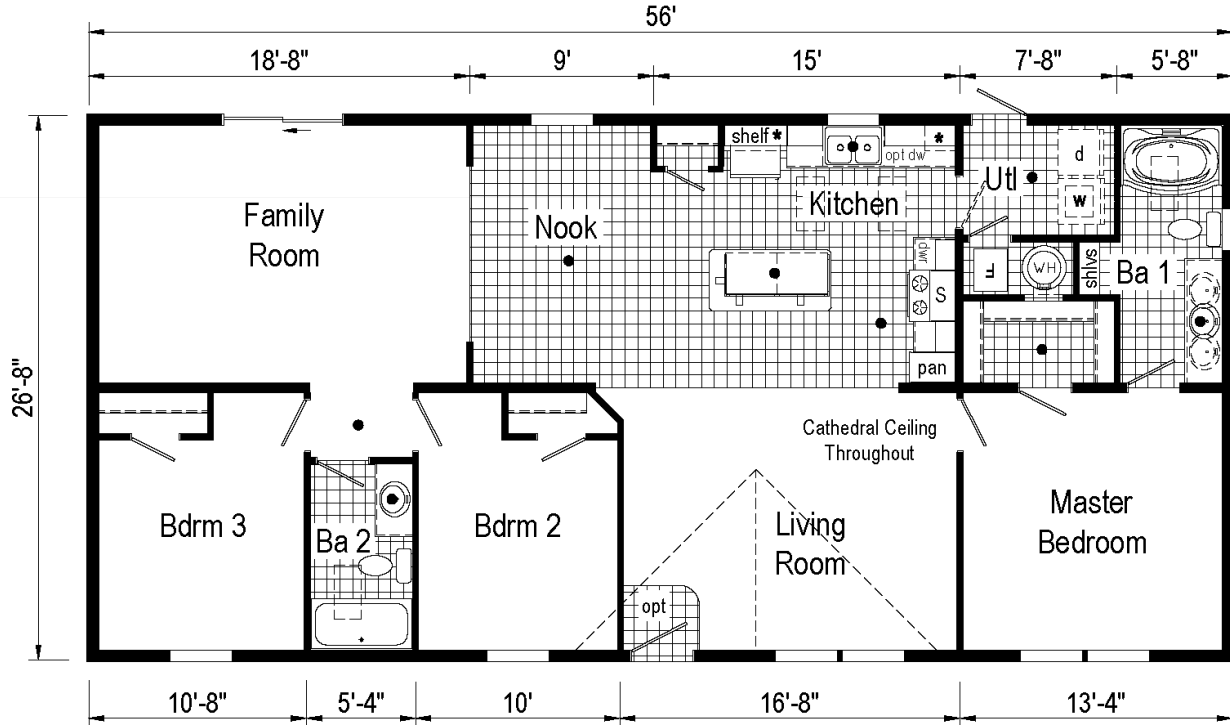


The Farmhouse

Family Room
 3 Bedroom
 2 Bath
 28 x 60 (56) / 1,493 s.f.



Construction: Double-Wide / Multi-Section Manufactured Home
Color: Lighthouse Red / White
Featuring 10" Eave Overhangs

*Our Pricing includes Delivery, Installation, Sewer & Water Hook-Up, and Tax (if applicable)
 [Please see an Installation Guide & Home Consultant for details]*

Upgrades

- Energy Star (Xtra Air Sealing & Insulation, 95% Eff Gas Furnace)
- **4' Stretch / Twin Peak Roof Dormer**
- 7'6" Exterior Wall Height with Cathedral Ceilings
- Protective Wind Wrap & Ice Guard Roof Barrier
- **Market Square Premium Vinyl Siding**
- Vinyl Sliding Glass Door in Family Room
- 4-Lite Fiberglass Front Exterior Door
- 24x36 Vinyl Window in Master Bath
- Exterior Water Faucet / 40 Gallon Water Heater
- Interior Water Shut-Off Valves Where Accessible
- In-House Main Water Line Shut-Off in Utility Room
- Perimeter Heat Ducts & Registers
- Interior Door with Return Air Vent at Utility Room
- **Pantry Closet in Kitchen**
- Choice of Vinyl Flooring / Vinyl Floor Entry Foyer
- Black Knobs on Cabinet Doors & Drawers
- **36x72 Kitchen Island with Stool Seating**
- 8" Deep Stainless Steel Kitchen Sink
- Upgraded Kitchen Faucet with Sprayer
- **Stainless Whirlpool Appliances: 25 Cu. Ft. Side by Side Refrigerator w/ Icemaker, Microwave over Self Clean Range (Plug for Elec. Range Also), Tall Tub Dishwasher**
- (2) Extra LED Recessed Lights in Kitchen
- (2) Black Cage Stem Lights over Kitchen Island
- 1-Piece Fiberglass Tub/Shower in Bath 2
- **Round Front FG Tub/Shower w/ Curved Rod - Master Bath**
- China Sinks in Bathrooms
- 4" Laminate Countertop Backsplashes Throughout
- Ceiling Lights in Bedrooms & Living Room
- Ceiling Fan in Family Room / (2) TV Jacks / Phone Jack

Village Homes has tried to ensure that our printed materials for all of our homes are comprehensive and factual. We reserve the right, however, to make changes without notice in pricing, options added, specifications, materials, etc. Due to continuous product development and improvements, your home may differ in manufacturing, color and options available at the time of construction. Specifications, dimensions and measurements on printed materials are approximates based on in-house design and/or engineering drawings. Any included images are artist renderings and not intended to be an accurate representation of the home. Renderings and floor plans may be shown with optional features or third party additions.

Installation Guide

Our Pricing includes DELIVERY, INSTALLATION and TAX (if applicable)

DOUBLE-WIDE & SINGLE-WIDE Home Installations Include:	VILLAGE HOMES	
SET, LEVEL & LAG HOME TOGETHER (DW)	✓	
SEAL MATE LINE / WALLS WITH EXPANSION FOAM	✓	
FINISH ROOFING	✓	
FINISH SIDING	✓	
HANG ALL INTERIOR DOORS / FINISH MATE WALL	✓	
SEAM CARPETS & FINISH FLOORING	✓	
INSTALL WATER LINE & HEAT TAPE TO SOURCE IN SLAB Run to Slab by Others	✓	
INSTALL SEWER LINE TO DRAIN(S) IN SLAB Run to Slab by Others	✓	
INSTALL ANCHORS / TIE DOWNS	✓	
INSTALL PREMIUM WHITE VINYL SKIRTING Rapid Wall & R-Cotec Insulated Products - Optional	✓	
INSTALL (2) SETS OF FIBERGLASS STEPS W/ RAILING	✓	
CLEAN HOME (Damp Wipe Surfaces, Broom & Vacuum)	✓	
REMOVE TRASH	✓	
REMOVE AXLES / TIRES (DW : Tires & Axles / SW : Tires)	✓	
1 YEAR MANUFACTURERS WARRANTY (New Homes)	✓	
10 YEAR LIMITED STRUCTURAL WARRANTY (New Homes)	✓	
HEATING / COOKING FUEL TANK(S) Buyer's Fuel Provider is Responsible for Tanks, Connections, Conversion to LP and Diagnostics	<i>Customer</i>	
CONNECT POWER SOURCE TO ELECTRICAL PANEL	<i>Optional</i>	
EXCAVATION / DRIVEWAY / LAWN	<i>Optional</i>	
CONCRETE SLAB OR FOUNDATION	<i>Optional</i>	
INSTALL PEDISTAL, METER & POWER LINE (Pole to Slab/Basement)	<i>Optional</i>	
ARTESIAN WELL OR CONNECT TO MUNICIPAL WATER Pressure Tank & Switch may be Required for Wells	<i>Optional</i>	
SEPTIC SYSTEM OR CONNECT TO MUNICIPAL SEWER	<i>Optional</i>	
GARAGE / DECK / PORCH	<i>Optional</i>	

FINANCING ASSISTANCE | IN-HOUSE CUSTOM PLAN DESIGN

EXCAVATION | SITE DEVELOPMENT | TRADES WELCOME

LAND FOR SALE | LOTS FOR RENT

ON-TIME & ON-BUDGET!



1083 US Route 2, Berlin, VT 05602 | (802) 229-1592 | sales@Village-Homes.com

**Vermont & New Hampshire's MOST TRUSTED builder
of affordable, quality Modular & Manufactured Homes**