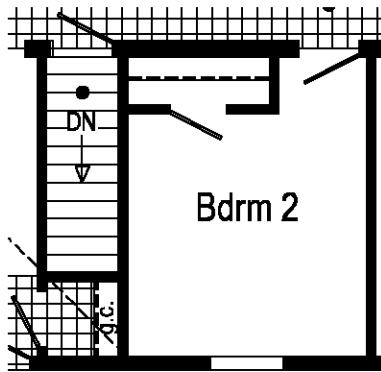
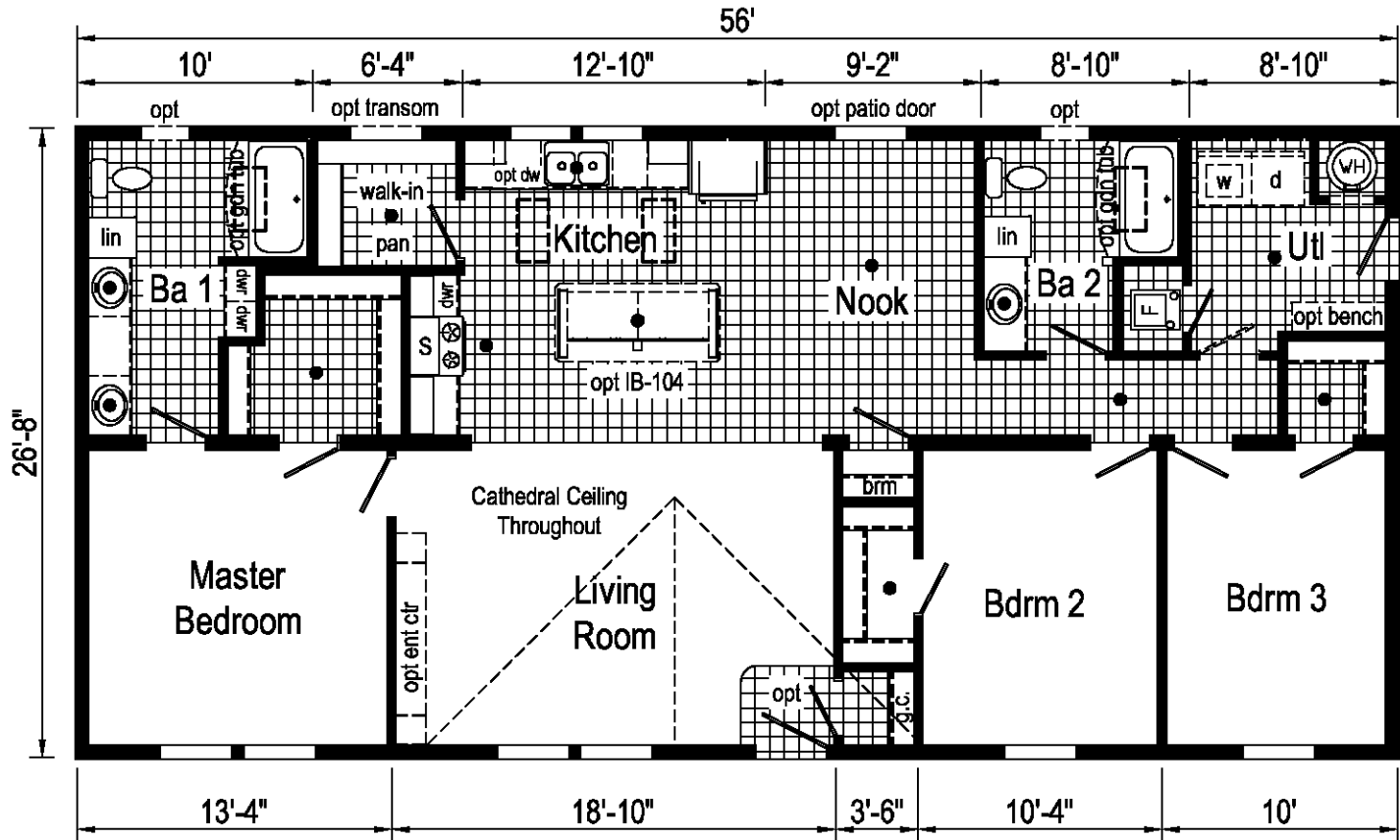


**Optional
4'x6' Walk-In
Tile Shower**



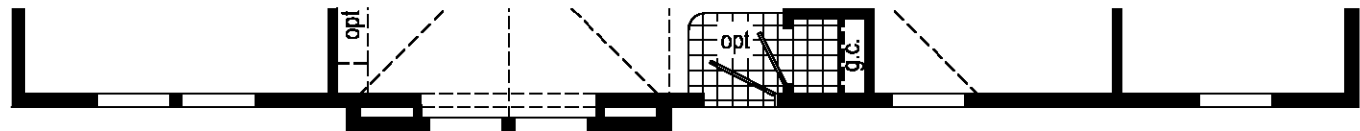
**Optional
Stairwell**

(omits broom closet)



3AM2073-P 2856 Approx. 1493 Sq. Ft.

S = Std. 4\" staggered overhead cabinets
● = Std. can light



opt 26'-8" dormer w/ bump-out

Curb Side Exterior Options

Ran Mar

Builder: Commodore Homes of Pennsylvania

Title: Literature

Callout:
2856

Revisions	
Date	No.

Scale:
1/8" = 1'-0"

Drawn By:
OY

Date:
1/7/20

Reference:
3AMS-P-ML350

Cust: -

Dr: .

S/N: .

Model/Eng. No.:

3AM2073-P

LIT

Pg: