

# The Otter Creek

3 Bedroom

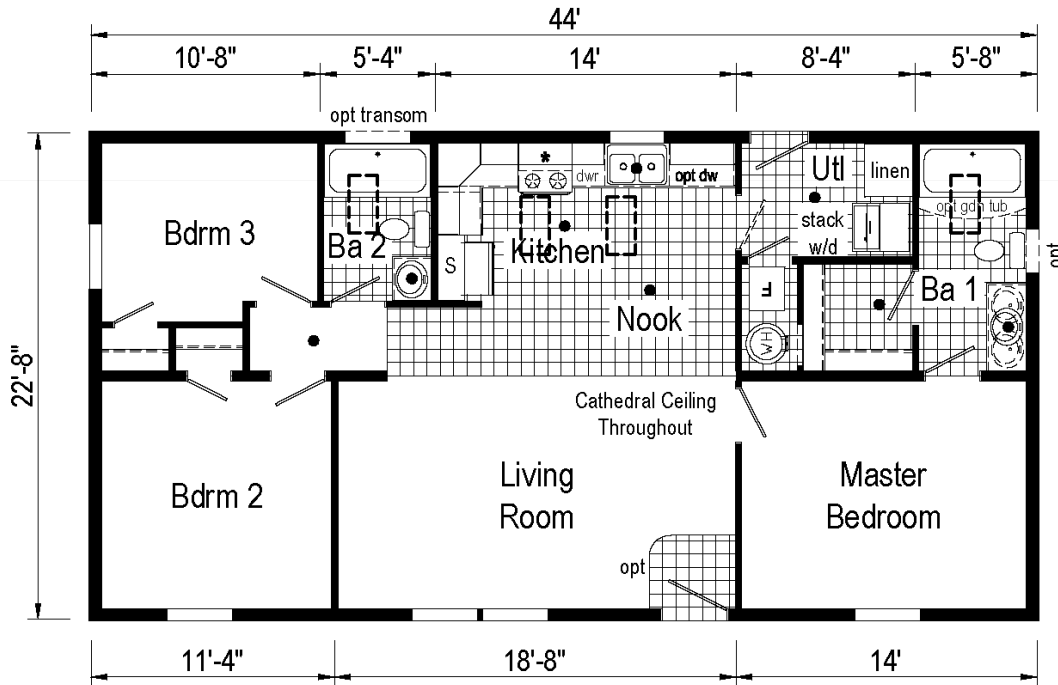
2 Bath

24 x 48 (44) / 997 s.f.



[www.GoVillageHomes.com](http://www.GoVillageHomes.com)

1083 US Route 2, Berlin, VT 05602-8245  
(802) 229-1592



## Construction:

Double-Wide / Multi-Section  
Manufactured Home

## Color:

Country Beige / Brown

## Featuring 10" Eave Overhangs

*Our Pricing includes Delivery, Installation, Sewer & Water Hook-Up, and Tax (if applicable)*

*[Please see an Installation Guide & Home Consultant for details]*

## Upgrades

- Energy Star (Xtra Air Sealing & Insulation, 95% Eff Gas Furnace)
- Protective Wind Wrap
- Ice Guard Roof Barrier
- Shutters on Side/Rear Windows
- 9-Lite Fiberglass Front Exterior Door
- 9-Lite Fiberglass Rear Exterior Door
- 24x36 Vinyl Window in Master Bath
- Exterior Water Faucet
- 40 Gallon Water Heater
- Interior Water Shut-Off Valves Where Accessible
- In-House Main Water Line Shut-Off in Utility Room
- Perimeter Heat Ducts & Registers
- **Vinyl Flooring with Matching Transition in Living Room**
- Interior Door with Return Air Vent at Utility Room
- **Hardwood Hickory Cabinetry Package**
- Black Knobs on Cabinet Doors & Drawers
- 8" Deep Stainless Steel Kitchen Sink
- Upgraded Kitchen Faucet with Sprayer
- **Whirlpool Microwave over Gas Range**
- Plug Also for Electric Range
- 4" Laminate Countertop Backsplashes Throughout
- Square China Sinks in Bathrooms
- **36x60 1-Piece Fiberglass Shower in Master Bath**
- 1-Piece Fiberglass Tub/Shower in Bath 2
- Ceiling Lights in Bedrooms & Living Room
- (2) TV Jacks
- Phone Jack
- 200 AMP Panel Box

Village Homes has tried to ensure that our printed materials for all of our homes are comprehensive and factual. We reserve the right, however, to make changes without notice in pricing, options added, specifications, materials, etc. Due to continuous product development and improvements, your home may differ in manufacturing, color and options available at the time of construction. Specifications, dimensions and measurements on printed materials are approximates based on in-house design and/or engineering drawings. Any included images are artist renderings and not intended to be an accurate representation of the home. Renderings and floor plans may be shown with optional features or third party additions.

Rev. 11/14

# Installation Guide

Our Pricing includes DELIVERY, INSTALLATION and TAX (if applicable)

## DOUBLE-WIDE & SINGLE-WIDE Home Installations Include:

## VILLAGE HOMES

SET, LEVEL & LAG HOME TOGETHER (DW)	✓	
SEAL MATE LINE / WALLS WITH EXPANSION FOAM	✓	
FINISH ROOFING	✓	
FINISH SIDING	✓	
HANG ALL INTERIOR DOORS / FINISH MATE WALL	✓	
SEAM CARPETS & FINISH FLOORING	✓	
<b>INSTALL WATER LINE &amp; HEAT TAPE TO SOURCE IN SLAB</b> Run to Slab by Others	✓	
<b>INSTALL SEWER LINE TO DRAIN(S) IN SLAB</b> Run to Slab by Others	✓	
INSTALL ANCHORS / TIE DOWNS	✓	
<b>INSTALL WHITE VINYL SKIRTING</b> Rapid Wall & R-Cotec Insulated Products - Optional	✓	
INSTALL (2) SETS OF FIBERGLASS STEPS W/ RAILING	✓	
CLEAN HOME (Damp Wipe Surfaces, Broom & Vacuum)	✓	
REMOVE TRASH	✓	
REMOVE AXLES & TIRES	✓	
1 YEAR MANUFACTURERS WARRANTY (New Homes)	✓	
7-10 YEAR LIMITED STRUCTURAL WARRANTY (New Homes)	✓	
HEATING / COOKING FUEL TANK(S) & INSTALLATION Buyer's Fuel Provider is Responsible for Tanks, Connections, Conversion to LP and Diagnostics	<i>Customer</i>	
CONNECT POWER SOURCE TO ELECTRICAL PANEL	<i>Optional</i>	
EXCAVATION / DRIVEWAY / LAWN	<i>Optional</i>	
CONCRETE SLAB OR FOUNDATION	<i>Optional</i>	
INSTALL PEDISTAL, METER & POWER LINE (Pole to Slab/Basement)	<i>Optional</i>	
ARTESIAN WELL OR CONNECT TO MUNICIPAL WATER Pressure Tank & Switch may be Required for Wells	<i>Optional</i>	
SEPTIC SYSTEM OR CONNECT TO MUNICIPAL SEWER	<i>Optional</i>	
GARAGE / DECK / PORCH	<i>Optional</i>	

FINANCING ASSISTANCE | IN-HOUSE CUSTOM PLAN DESIGN

EXCAVATION | SITE DEVELOPMENT | TRADES WELCOME

LAND FOR SALE | LOTS FOR RENT

**ON-TIME & ON-BUDGET!**



1083 US Route 2, Berlin, VT 05602 | (802) 229-1592 | sales@Village-Homes.com

**Vermont & New Hampshire's MOST TRUSTED builder  
of affordable, quality Modular & Manufactured Homes**