

# The Pinnacle

3 Bedroom

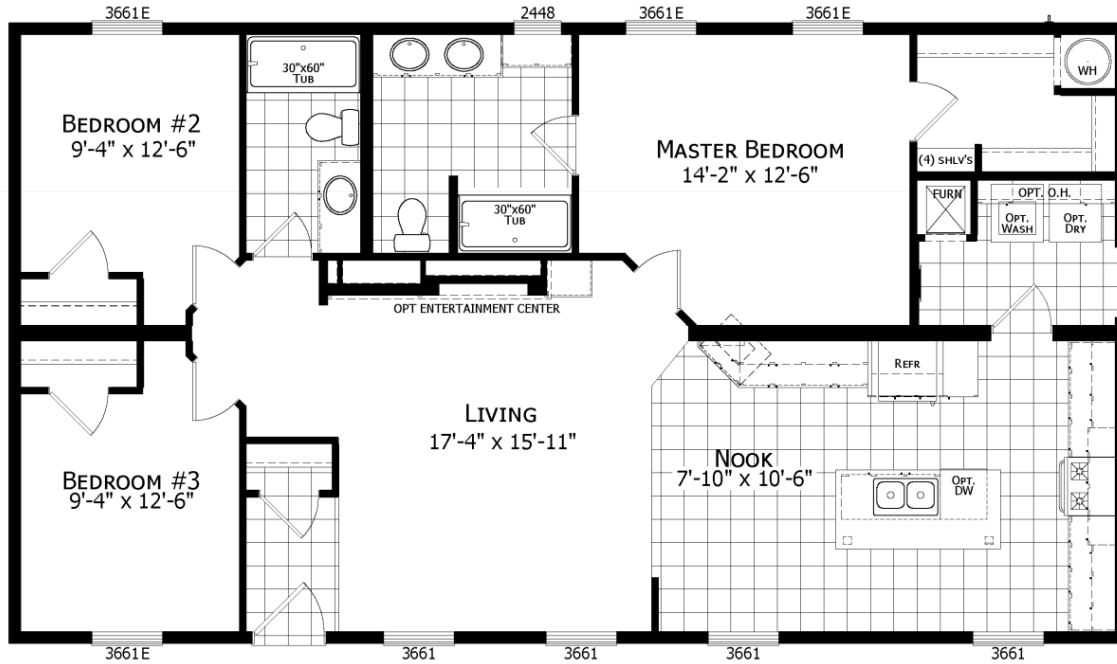
2 Bath

28 x 52 (48) / 1,280 s.f.



[www.GoVillageHomes.com](http://www.GoVillageHomes.com)

1083 US Route 2, Berlin, VT 05602-8245  
(802) 229-1592



## Construction:

Double-Wide / Multi-Section  
Manufactured Home

## Color:

Thistle / Black

## Featuring 10" Eave Overhangs

*Our Pricing includes Delivery, Installation, Sewer & Water Hook-Up,  
and Tax (if applicable)*

*[Please see an Installation Guide & Home Consultant for details]*

## Upgrades

- Energy Star (Xtra Air Sealing & Insulation, 95% Eff. Gas Furnace)
- Large Recessed Roof Dormer
- Shutters on All Windows
- 36" 9-Lite Fiberglass Side Exterior Door
- In-House Main Water Line Shut-Off
- Exterior Water Faucet
- 40 Gallon Water Heater
- Perimeter Heat Ducts & Registers
- Whirlpool Stainless Steel Dishwasher
- Chimney Style Stainless Steel Range Hood
- Pull Down Kitchen Faucet with Sprayer
- 8" Deep Stainless Steel Kitchen Sink
- China Sinks in Bathrooms
- Metal Sink Faucets in Bathrooms
- Hi Rise Elongated Toilets in Bathrooms
- 36x60 Fiberglass Shower in Master Bathroom
- 1-Piece Fiberglass Tub/Shower Unit in Bath #2
- Hunter Paddle Fan with Light in Living Room
- Vinyl Floor Entry Foyer
- (2) TV Jacks / Phone Jack

Village Homes has tried to ensure that our printed materials for all of our homes are comprehensive and factual. We reserve the right, however, to make changes without notice in pricing, options added, specifications, materials, etc. Due to continuous product development and improvements, your home may differ in manufacturing, color and options available at the time of construction. Specifications, dimensions and measurements on printed materials are approximates based on in-house design and/or engineering drawings. Any included images are artist renderings and not intended to be an accurate representation of the home. Renderings and floor plans may be shown with optional features or third party additions.

Rev. 11/14

# Installation Guide

Our Pricing includes DELIVERY, INSTALLATION and TAX (if applicable)

## DOUBLE-WIDE & SINGLE-WIDE Home Installations Include:

## VILLAGE HOMES

SET, LEVEL & LAG HOME TOGETHER (DW)	✓	
SEAL MATE LINE / WALLS WITH EXPANSION FOAM	✓	
FINISH ROOFING	✓	
FINISH SIDING	✓	
HANG ALL INTERIOR DOORS / FINISH MATE WALL	✓	
SEAM CARPETS & FINISH FLOORING	✓	
<b>INSTALL WATER LINE &amp; HEAT TAPE TO SOURCE IN SLAB</b> Run to Slab by Others	✓	
<b>INSTALL SEWER LINE TO DRAIN(S) IN SLAB</b> Run to Slab by Others	✓	
INSTALL ANCHORS / TIE DOWNS	✓	
<b>INSTALL WHITE VINYL SKIRTING</b> Rapid Wall & R-Cotec Insulated Products - Optional	✓	
INSTALL (2) SETS OF FIBERGLASS STEPS W/ RAILING	✓	
CLEAN HOME (Damp Wipe Surfaces, Broom & Vacuum)	✓	
REMOVE TRASH	✓	
REMOVE AXLES & TIRES	✓	
1 YEAR MANUFACTURERS WARRANTY (New Homes)	✓	
7-10 YEAR LIMITED STRUCTURAL WARRANTY (New Homes)	✓	
HEATING / COOKING FUEL TANK(S) & INSTALLATION Buyer's Fuel Provider is Responsible for Tanks, Connections, Conversion to LP and Diagnostics	<i>Customer</i>	
CONNECT POWER SOURCE TO ELECTRICAL PANEL	<i>Optional</i>	
EXCAVATION / DRIVEWAY / LAWN	<i>Optional</i>	
CONCRETE SLAB OR FOUNDATION	<i>Optional</i>	
INSTALL PEDISTAL, METER & POWER LINE (Pole to Slab/Basement)	<i>Optional</i>	
ARTESIAN WELL OR CONNECT TO MUNICIPAL WATER Pressure Tank & Switch may be Required for Wells	<i>Optional</i>	
SEPTIC SYSTEM OR CONNECT TO MUNICIPAL SEWER	<i>Optional</i>	
GARAGE / DECK / PORCH	<i>Optional</i>	

FINANCING ASSISTANCE | IN-HOUSE CUSTOM PLAN DESIGN

EXCAVATION | SITE DEVELOPMENT | TRADES WELCOME

LAND FOR SALE | LOTS FOR RENT

**ON-TIME & ON-BUDGET!**



1083 US Route 2, Berlin, VT 05602 | (802) 229-1592 | sales@Village-Homes.com

**Vermont & New Hampshire's MOST TRUSTED builder  
of affordable, quality Modular & Manufactured Homes**