

# LIMITED

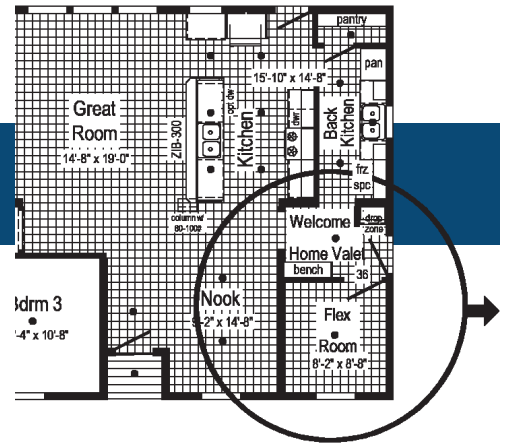
2023



# LIMITED<sup>1</sup>

## THE EASY LIFE

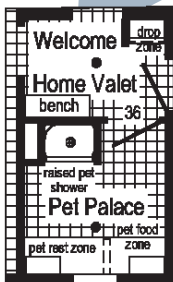
- 1. The Back Kitchen** - The kitchen is where we entertain so the Back Kitchen is where the counter clutter goes (coffee maker, toaster, blender, etc.) Also cooking prep before and clean up after. Second freezer space for freezer or additional refrigerator since we never have enough storage for beverages.
- 2. Power Pantry** - How we shop today is in bulk. Power Pantry provides bulk storage and can reduce the need for kitchen overheads, allowing the kitchen to be more streamlined and contemporary.
- 3. Welcome Home Valet** - Entry into your home should be an inviting event. The Welcome Home Valet says - "Welcome home it's time to kick back and relax". This area provides a location to store your personal belongings (coat, purse, back-pack, shoes, cell phone, keys, etc). After a stressful day from work or school no one wants to enter past a stack of dirty laundry.
- 4. Connect Laundry** - Let's put the laundry where it makes the most sense; connected to the master closet and close to secondary bedrooms. Shorten the chores by taking clothes directly from the dryer to the closet or removing the wrinkles from that shirt for an evening event.



### Pet Palace-

A majority of

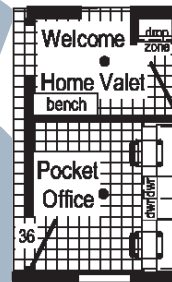
homeowners are also pet owners. The Pet Palace provides a place for bathing your pet at an elevated height. It also serves as the location for storing pet "stuff", pet bed or crate, pet feeding location or even litter box hide-away.



Pet Owner

### Pocket Office

Busy households need a space everyone can use. Working from home or an area for the kids to do homework; the Pocket Office provides a private area to get away and concentrate on the task at hand or do some gaming without distracting others.



Work from Home

### Clean-Up

Crew Whether you're

a mechanic, builder, farmer, or hard worker that just needs that place to clean up after a busy day of work. Located directly off the side entry the "Clean-Up Crew" bath provided a private bath to clean-up prior in entering into the common areas.



Clean-up Crew

### Winter Organizer

Located directly off the Welcome Home Valet the Winter Organizer is a place for all your winter gear. Hunters have a place to store their camo and the kids have a place for snow gear to dry. Shelves for storing boots, scarves, hats & gloves, and a coat rod for coats, snow pants, and overalls. Keep everything in one place!



Winter Organizer

### Entertainer

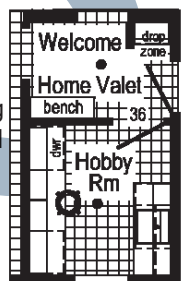
For entertaining guests or family convenience the beverage center may serve as a coffee bar, beverage center, or for wine storage. It's a serve-self area for everyone.



Entertainer

### Hobbyist

All hobbies require space! The Hobbyist offers countertop space for creating, cabinets for storing it all away, and a sink for rinsing molds, brushes, and more.



Hobbyist

So how can you get all those features without taking space from your home?  
Check out the Flex Room Options to meet YOUR Lifestyle.

# LIMITED<sup>1</sup>

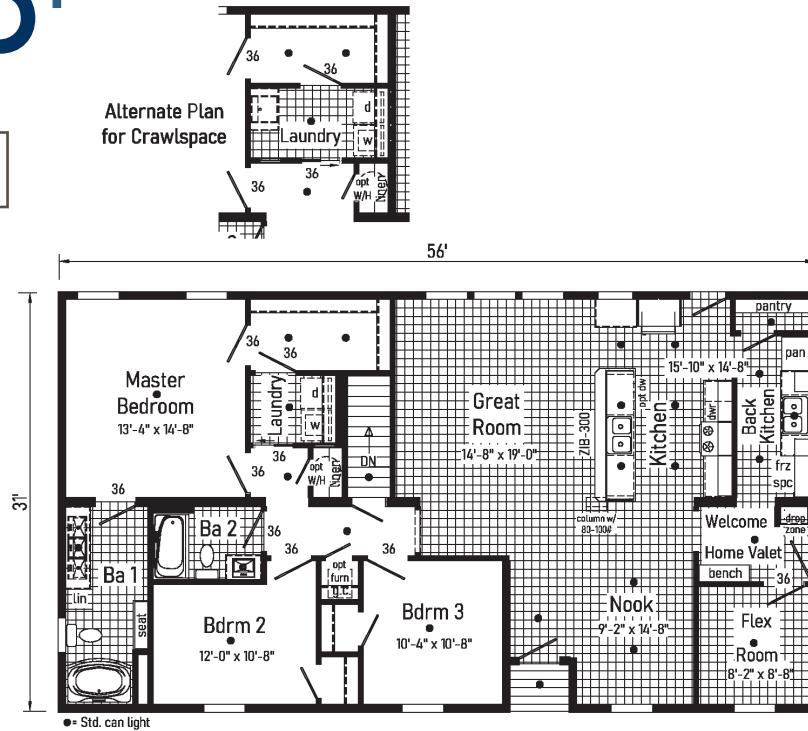
www.manorwoodhomes.com

## LIMITED 1.1

**2M3901-X 3256**

Style: Ranch  
Square Feet: 1722

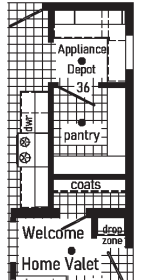
Bedrooms: 3  
Bathrooms: 2-3



Alternate Plan  
for Crawlspace

Alternate  
Chef's Gallery

With Appliance Depot, Walk-In  
Pantry and Coat Closet  
(replaces Back Kitchen)

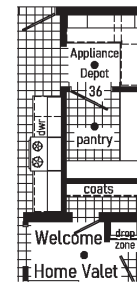
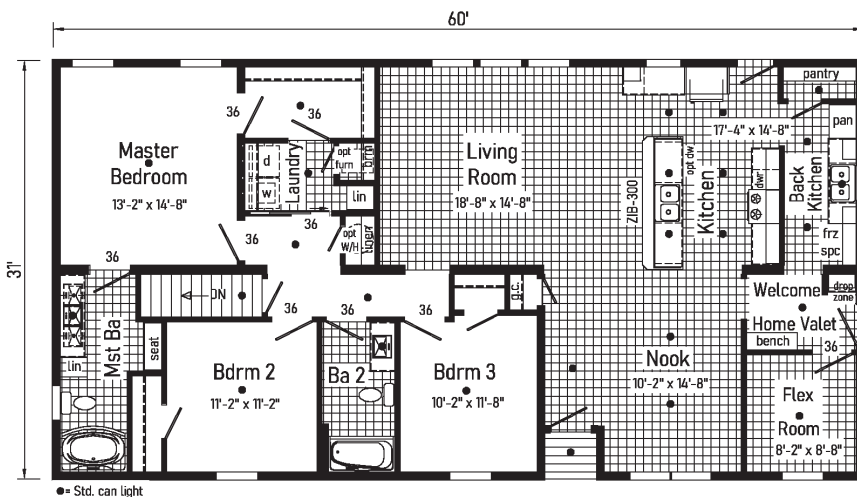


## LIMITED 1.2

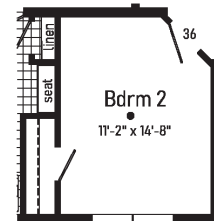
**2M3902-X 3260**

Style: Ranch  
Square Feet: 1846

Bedrooms: 3  
Bathrooms: 2-3



Alternate  
Chef's Gallery  
With Appliance Depot, Walk-In  
Pantry and Coat Closet  
(replaces Back Kitchen)



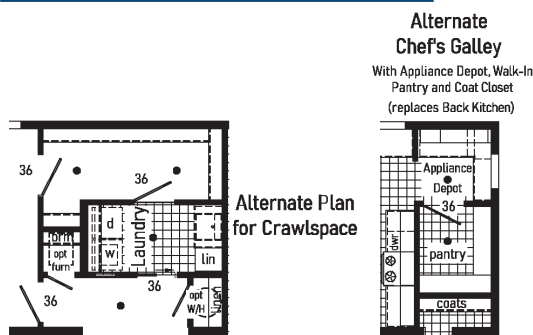
Alternate Plan  
for Crawlspace

3

**2M3903-X 3268**

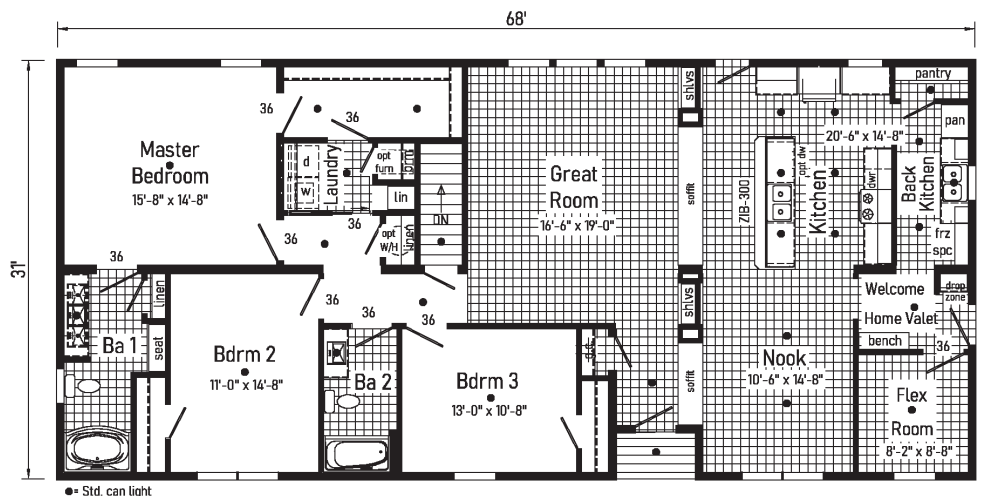
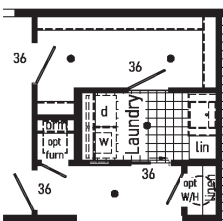
Style: Ranch  
Square Feet: 2087

Bedrooms: 3  
Bathrooms: 2-3



Alternate  
Chef's Gallery  
With Appliance Depot, Walk-In  
Pantry and Coat Closet  
(replaces Back Kitchen)

Alternate Plan  
for Crawlspace





# LIMITED<sup>1</sup>



4





FLOOR CONSTRUCTION

2X10 Floor Joists 16" O.C.  
¾" T&G OSB Floor Decking  
Insulated Basement Stairwell

EXTERIOR WALLS

2X6 Studs 16" O.C.  
Double 2X6 Top Plates  
8' Wall Height  
Structural OSB Sheathing  
Whole House Wind Wrap  
Vinyl Siding

INTERIOR WALLS

2X4 Interior Wall Studs 24" O.C.  
2X4 Marriage Wall Studs 16" O.C. with OSB Sheathing  
Primed ½" Smooth Drywall Throughout

ROOF AND CEILING

8' Flat Ceiling  
5/12 Roof Pitch with 12" Eaves  
Pre-Engineered 40# Roof Trusses 24" O.C.  
90 MPH Wind Exposure C Wind Load Design  
Ice Shield  
Structural OSB Roof Decking  
Shingle Over Ridge Vent Ventilation  
Vented Vinyl Soffit  
Aluminum Fascia  
Aluminum Drip Edge on all Roof Edges  
Smooth Drywall Ceiling  
Architectural Shingles  
(Limited Lifetime Warranty)  
Synthetic Roof Underlayment

PLUMBING

PEX Water Lines Stubbed Through Floor  
Drain, Water and Vents Stubbed Through Floor  
Shut Off Valves for all Sinks, Lavs and Toilets  
Plumb, Wire and Vent for Washer/Dryer  
Recessed Dryer Vent Box  
Oetiker Clamps  
Plumb for Dishwasher

INSULATION

Exterior Walls R-21 Fiberglass Insulation  
Ceiling R-38 Fiberglass Batt Insulation



LONG LIVE HAPPY HOMES

EXTERIOR DOORS AND WINDOWS

3/0 x 6/8 6-Panel Fiberglass Door with Nickel Hardware & Composite Jamb at Front & Rear Primed White  
Door Pan on Exterior Doors  
Low-E Vinyl Insulated Single Hung Argon Filled White Windows – Mulled where Applicable  
Front & Rear Door Kwikset Lockset with Smart Key  
15" Raised Panel Shutters Door Side

INTERIOR DOORS AND TRIM

2-Panel Painted White Interior Doors w/ Lever Passage Sets and 3 Mortise Hinges  
36" Interior Doors – Where Available  
Privacy Locks on Bedroom & Bath Doors  
Door Stops  
White Wood Colonial Moulding Package  
Wire Shelving all Closets and Washer / Dryer Area  
Brushed Nickel Hardware

FLOOR COVERING

Congoleum Vinyl Flooring  
(Kitchen, Baths, Utility and Foyer, Great Room, Nook)  
25 oz. Carpet with Stain Protector  
5# Rebond Carpet Pad

KITCHEN



¾ Overlay Classic Craft Cabinetry  
- KCMA Certified  
Hardwood 5-Piece French Country Oak or Barnwood Oak Mission Flat Panel Doors  
Craftsman Cabinet Crown Moulding  
42" Height Kitchen Overhead Cabinets  
Dovetailed Drawers  
Soft Close Undermount Drawer Guides  
Laminate Countertops  
8" Deep Stainless Steel Kitchen Sink  
Brushed Nickel Metal Faucet with Sprayer  
Power Range Hood  
Cabinet Pulls (Brushed Nickel or Black)  
Corner Base Lazy Susan (where applicable)  
USB Receptacle II

BATHS

Brushed Nickel Metal Faucets  
Anti-Scald Valves for Showers & Tubs  
Laminate Countertops  
China Lavs  
Elongated Toilets  
Lighted Exhaust Fans with Insulated Ducts  
Recessed LED Lighting  
60" One Piece Fiberglass Tub/Shower  
Linens with Drawers (where available)

ELECTRICAL

200 AMP Electrical Service with 40/40 Panel Box  
2 GFI Exterior Receptacles with In-Use Covers  
Craftsman Light at Front and Rear Exterior Door  
Recessed LED Lighting T/O  
Smoke Detectors with Battery Back-up  
Wire for Electric Range  
Carbon Monoxide Detector(s)  
Electric Doorbell at Front Door



Limited

Omit Basement Stairwell  
Superior Bracing  
Exterior Water Faucet Extra  
Single Bowl Kitchen Sink  
50 Gallon Electric Hot Water Heater  
Heating Package:  
(Furnace, Return Air (No trunk lines available)  
(Gas or Electric))  
½ Lite Pembroke  
Single Full View Door  
60" Fiberglass Shower

Vinyl Sliding Glass Door  
Whole House Ventilation Fan  
Floor Light Shipped Loose  
Photo Electric Smoke Detector  
Photo Electric Smoke Detector with Carbon Monoxide  
Phone Jack  
Junction Boxes with Conduit  
Coastal Shores Siding  
5/12 60#, 80# and 100#  
7/12 Non-Storage 40#, 60#, 80# and 100#

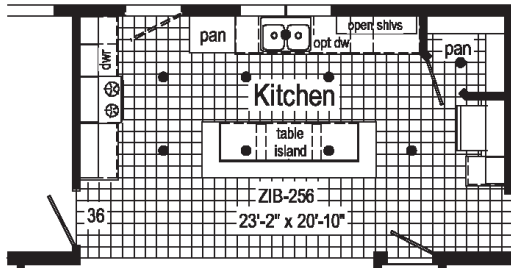
Wind Zones  
Seismic Zones  
Tru Spirit Carpet  
Floorte Shipped Loose  
Omit Carpet  
Cabinet Colors  
Double Sink in Master  
Utility Sink  
Pearl Appliance Pkg  
(gas or electric)  
Labels and Codes

AVAILABLE OPTIONS

Additional Options Available, Fees May Apply



## THE EASY LIFE



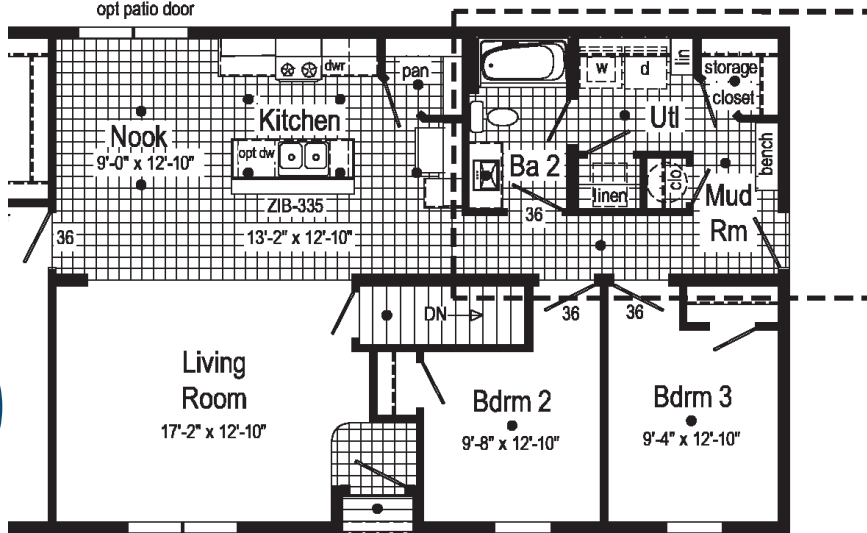
### Eat-In Kitchen

The kitchen is where the heart is. Loads of space, storage, and work area. Open to the living for great entertaining.

So how can you get all those features without taking space from your home?  
Check out the Flex Room Options to meet YOUR Lifestyle.

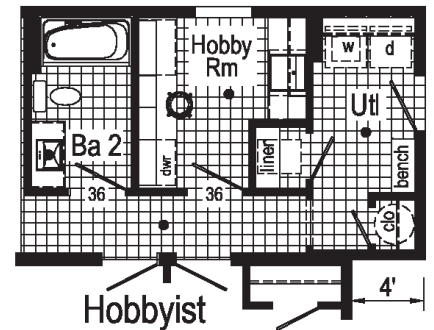
### Optional Eat-In Kitchen

opt patio door



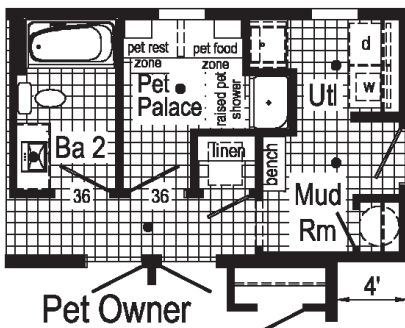
### Hobbyist

All hobbies require space! The Hobbyist offers countertop space for creating, cabinets for storing it all away, and a sink for rinsing molds, brushes, and more.



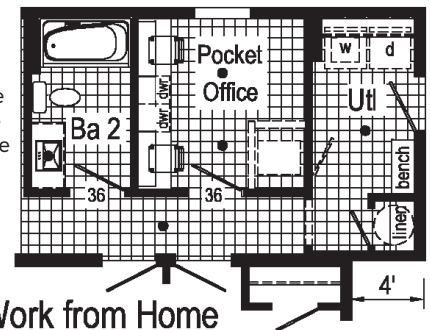
### Pet Palace

A majority of homeowners are also pet owners. The Pet Palace provides a place for bathing your pet at an elevated height. It also serves as the location for storing pet "stuff", pet bed or crate, pet feeding location or even litter box hide-away.



### Pocket Office

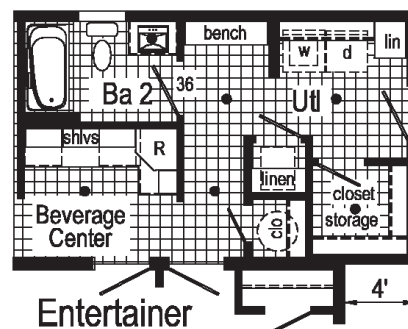
Busy households need a space everyone can use. Working from home or an area for the kids to do homework; the Pocket Office provides a private area to get away and concentrate on the task at hand or do some gaming without distracting others.



Work from Home

### Entertainer

For entertaining guests or family convenience the beverage center may serve as a coffee bar, beverage center, or for wine storage. It's a serve-self area for everyone.



# LIMITED<sup>2</sup>

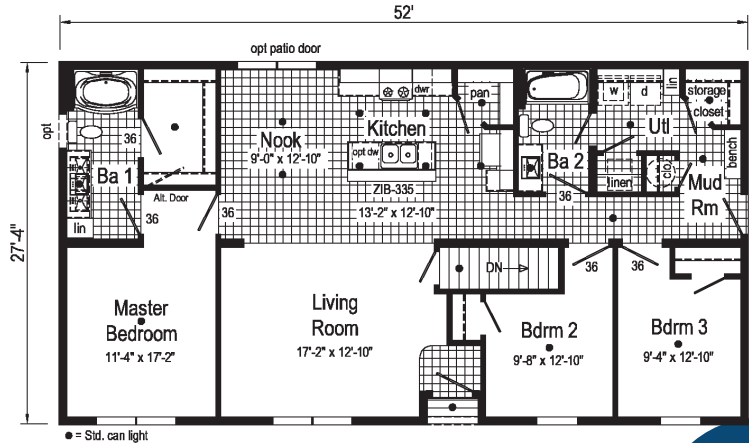
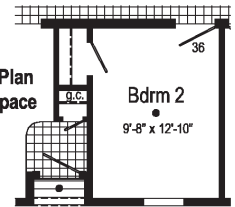
## LIMITED 2.2

**2M3905-R 2852**

Style: Ranch  
Square Feet: 1421

Bedrooms: 3  
Bathrooms: 2

Alternate Plan  
for Crawlspace



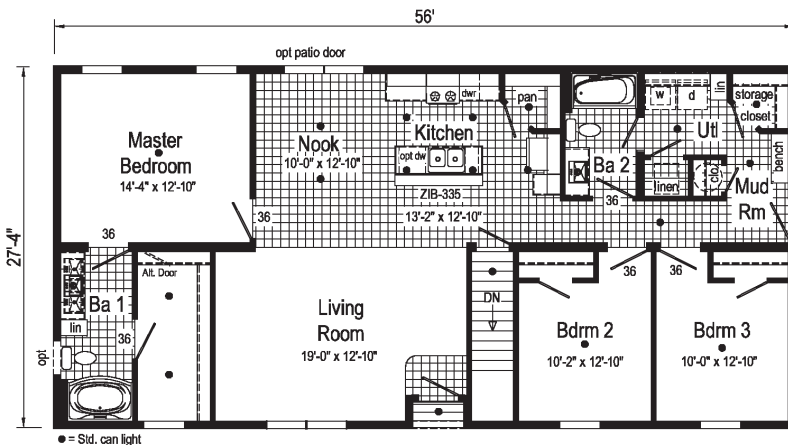
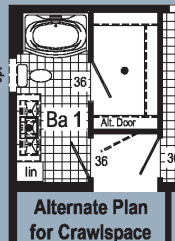
## LIMITED 2.1

**2M3904-R 2848**

Style: Ranch  
Square Feet: 1312

Bedrooms: 3  
Bathrooms: 2

\*Eat-In Kitchen is the Only Flex Option Available for Limited 2.1



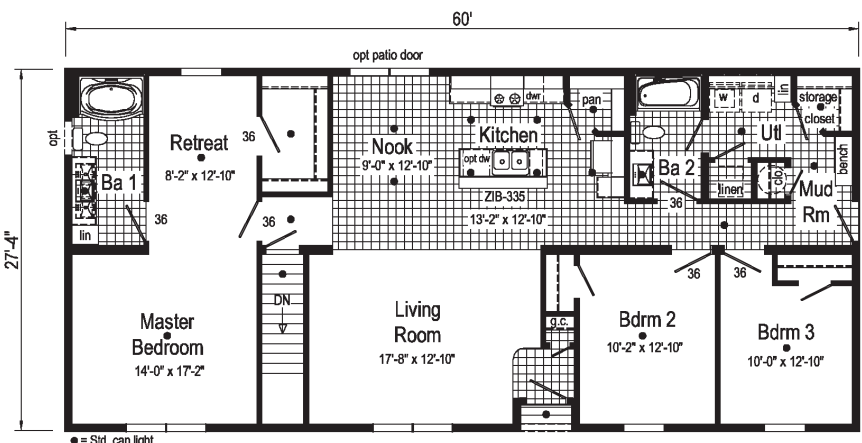
## LIMITED 2.3

**2M3906-R 2856**

Style: Ranch  
Square Feet: 1532

Bedrooms: 3  
Bathrooms: 2

Alternate Plan  
for Crawlspace



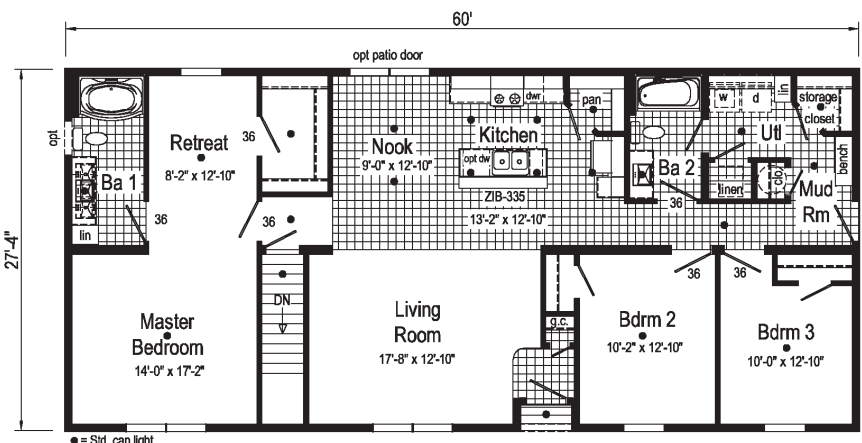
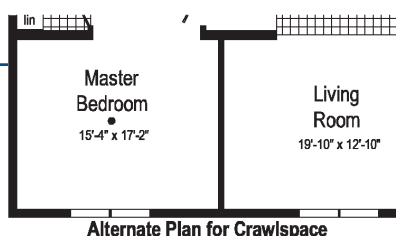
7

## LIMITED 2.4

**2M3907-R 2860**

Style: Ranch  
Square Feet: 1640

Bedrooms: 3  
Bathrooms: 2



# LIMITED<sup>2</sup>



OR



70  
YEARS

All information and images contained in this brochure are property of Commodore Homes and for the use by active dealers of the company only. © Note: Because of varying state requirements and optional equipment, some or all of the utility locations may change per floor plan. (i.e. furnace, stairwell, etc.) Consult your factory representative for exact specifications. Your purchase contract is with your builder/dealer who is an independent contractor, not our agent, and is responsible totally for any alterations, exchanges, additions or attachments made in or to your home. Customized floorplans are available. Equipment, colors, material, specifications, prices and model availability are subject to change without notice. Some exterior attachments as shown on elevations are materials required to be supplied locally or installed by others on-site. AP M 9/22