

# Ranch/Cape

2023



# Table of Contents

## RANCH

2M3001-R	Chester	875	Sq. Ft.	Pg. 4
2M3003-R	Herreshoff	1387	Sq. Ft.	Pg. 5
2M3004-R	Coghlan	1531	Sq. Ft.	Pg. 6
2M3006-R	Crookston	1749	Sq. Ft.	Pg. 7
2M3007-R	Saginaw	1203	Sq. Ft.	Pg. 8
2M3009-R	Scotsdale	1531	Sq. Ft.	Pg. 9
2M3010-R	Jasper	1585	Sq. Ft.	Pg. 10
2M3012-R	Heathcliff	1640	Sq. Ft.	Pg. 11
2M3013-R	Summerdale	1749	Sq. Ft.	Pg. 12
2M3014-R	Weatherby	1804	Sq. Ft.	Pg. 13
2M3018-X	Afton	1860	Sq. Ft.	Pg. 14
2M3020-X	Pemberton	1984	Sq. Ft.	Pg. 15
2M3021-X	Yorkshire	1664	Sq. Ft.	Pg. 16
2M3015-R	Wiltshire	1878	Sq. Ft.	Pg. 17
3M3001-R	Augustine	1649	Sq. Ft.	Pg. 18
3M3002-R	Canton	2146	Sq. Ft.	Pg. 19
4M3001-R	Leland	1943	Sq. Ft.	Pg. 20-21

## CAPE

2MC3002-N	Woodcliff	1144	Sq. Ft.	Pg. 22
2MC3003-R	Kensington	1312	Sq. Ft.	Pg. 23
2MC3004-R	Covington	1531	Sq. Ft.	Pg. 24
3MC3001-R	Shadowbrook	1872	Sq. Ft.	Pg. 25
4MC3001-R	Pembroke	2312	Sq. Ft.	Pg. 26

## BELLISSIMO

2M3401-R	Bellissimo	1559	Sq. Ft.	Pg. 28-29
2M2402-R	Bellissimo 2	1709	Sq. Ft.	Pg. 30
3M3401-R	Bellissimo 3	1736	Sq. Ft.	Pg. 31



**French Country Oak  
Mission Flat Panel**



**Rustic Elm  
Mission Flat Panel**



**Shadow Grey  
Mission Flat Panel**



**Barnwood Oak  
Mission Flat Panel**



**White  
Mission Flat Panel**



**Precision Cut and Dadoed Construction Fastened and Hot Glued - Ensures a Long Lasting and Square Cabinet Box**

**3/4 Overlaid Cabinet Doors & Drawer - Limited Exposure of Cabinet Stiles**

**3/4" Thick Shelving with Finished Edges - Prevents Warping of Shelves**

**Base and Wall Cabinet Adjustable Shelving - Fit Your Lifestyle**

**3/4" Face Frames - Durable and Securely Holds Fasteners for Long Lasting Use**

**Pocket Screws - Ensure a Strong and Square Frame**

**Dove-Tail Constructed Drawers - Superior Drawer Strength**

**Undermount Soft Close Drawer Guides**

**Concealed and Recessed Hinges - Superior Door Strength**

**Recessed Toe Kick - Work at Counters with Ease**

**No Exposed Hanging Cleats- More Storage and Cleaner Look**

### **KCMA Testing**

- Overhead Cabinets Rated to 500 pound Capacity
- Drawers Opened 28,000 Times with Weight
  - Cabinet Doors Opened 25,000 Times
  - Extreme Testing of Cabinet Finish

Evermore Custom Cabinets endure a series of rigorous tests, measuring structural integrity Cabinet doors, drawers and even the finish are tested before earning the KCMA Cabinet Certification.

Visit [www.KCMA.org](http://www.KCMA.org)  
for more information





# Chester

4

## 2M3001-R 2832

Style: Ranch or Cape

Square Feet: 875

Bedrooms: 3

Bathrooms: 2

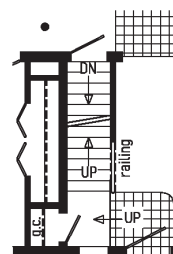
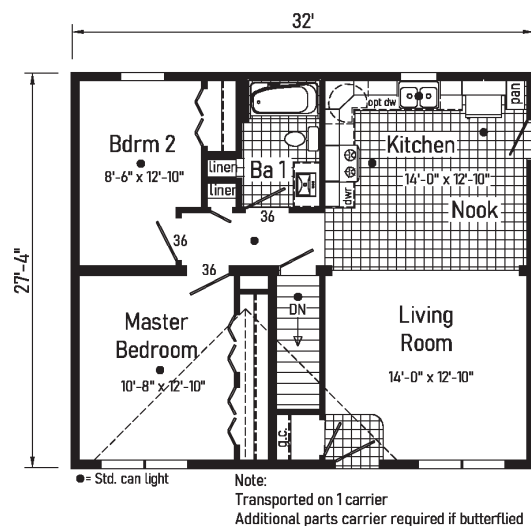
### Optional Features:

- 12/12 Roof
- 6' Cape Dormers
- Shake Siding Accent
- Octagon Window
- Upgraded Front Door

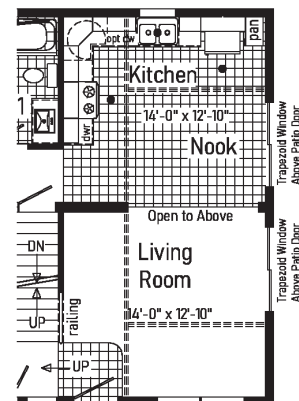
### Features On-Site

### by Others:

- Garage



Opt. Open  
Attic Stairs  
Only available with 12/12 roof

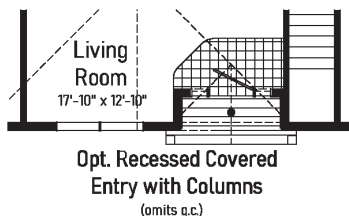
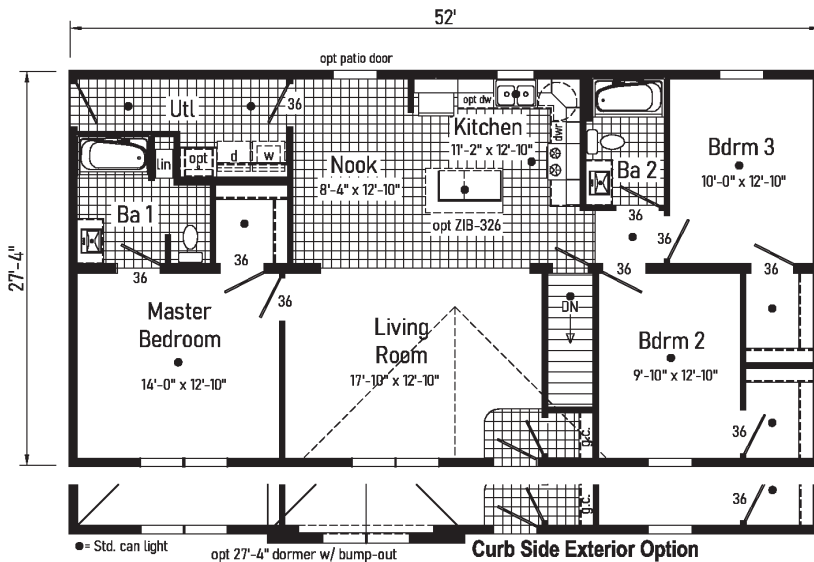


Optional Chalet with  
Opt 12 /12 Roof  
Transom Windows over  
Patio Doors & Balcony Above



*Herreshoff*

5



## 2M3003-R 2852

Style: Ranch or Cape  
Square Feet: 1387  
Bedrooms: 3  
Bathrooms: 2

### Optional Features:

- 27'-4" Dormer with Bumpout
- Dutch Eaves
- Full Eave Return
- Market Square Siding
- Shake Siding Accent
- Window Grids
- Upgraded Front Door
- Sidelite

### Features On-Site by Others:

- Stone Facade
- Garage
- Gutters and Downspouts





*Coghlan*

6

## 2M3004-R 2856

Style: Ranch or Cape

Square Feet: 1531

Bedrooms: 3

Bathrooms: 2

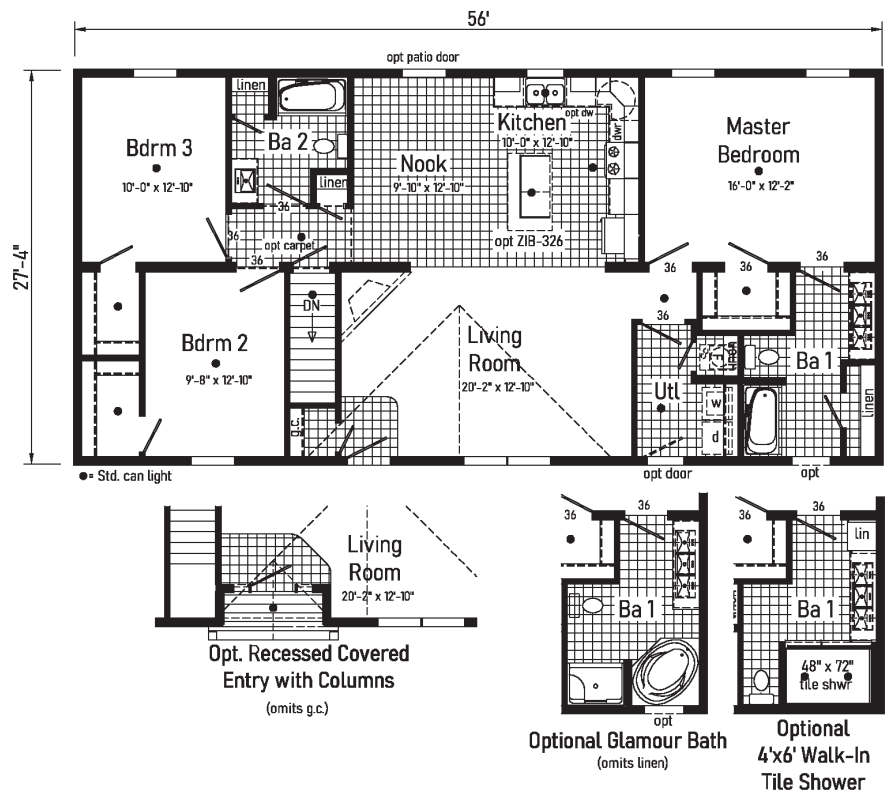
### Optional Features:

- 7/12 Roof
- Market Square Siding
- Window Lineals
- Window Grids
- Upgraded Front Door
- Kick Plate

### Features On-Site

#### by Others:

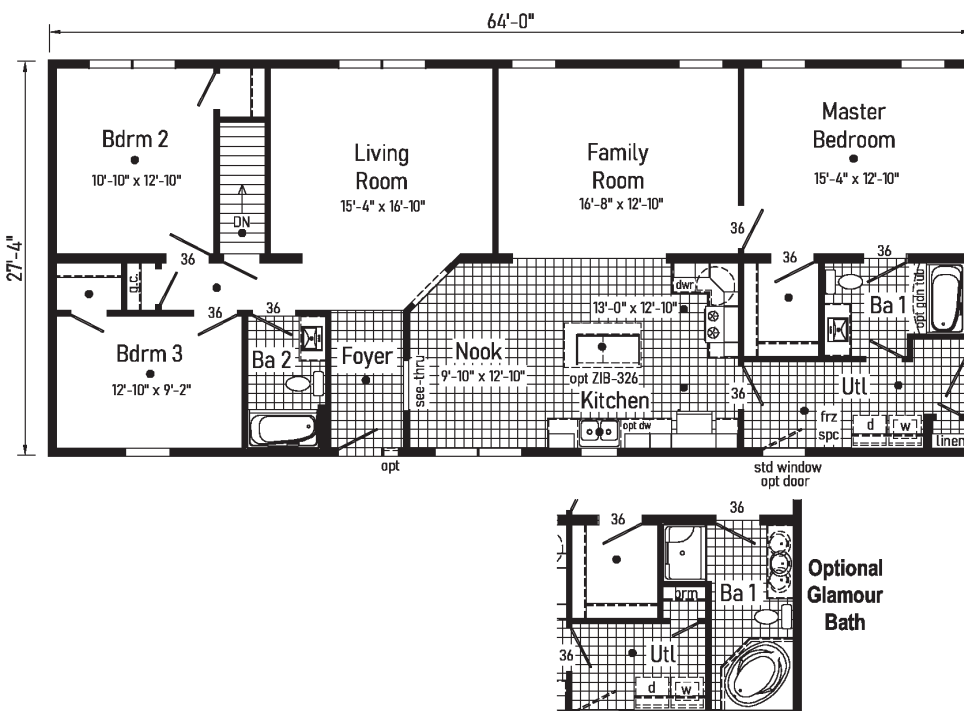
- Stone Facade
- Garage
- Covered Porch





# Crookston

7



## 2M3006-R 2864

Style: Ranch or Cape

Square Feet: 1749

Bedrooms: 3

Bathrooms: 2

### Optional Features:

- Clay Trim Package
- Window Grids
- Split Windows in Nook
- Upgraded Front Door

### Features On-Site

#### by Others:

- Covered Porch
- Garage
- Gutters and Downspouts



# Saginaw

8

## 2M3007-R 2844

Style: Ranch or Cape

Square Feet: 1203

Bedrooms: 3

Bathrooms: 2

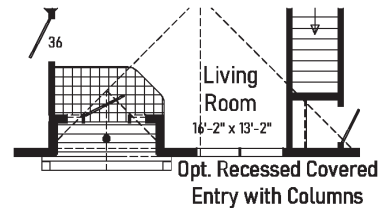
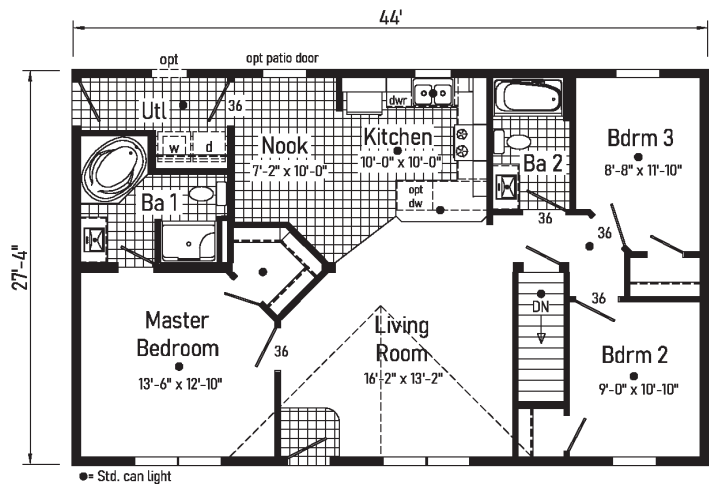
### Optional Features:

- 12/12 Roof
- 6' Cape Dormers
- Vertical Siding
- Lineals
- Upgraded Front Door

### Features On-Site

#### by Others:

- Garage
- Covered Porch
- Gutters and Downspout

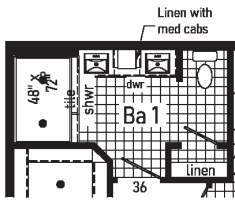




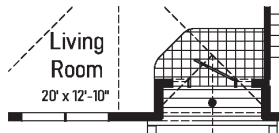


# Scotsdale

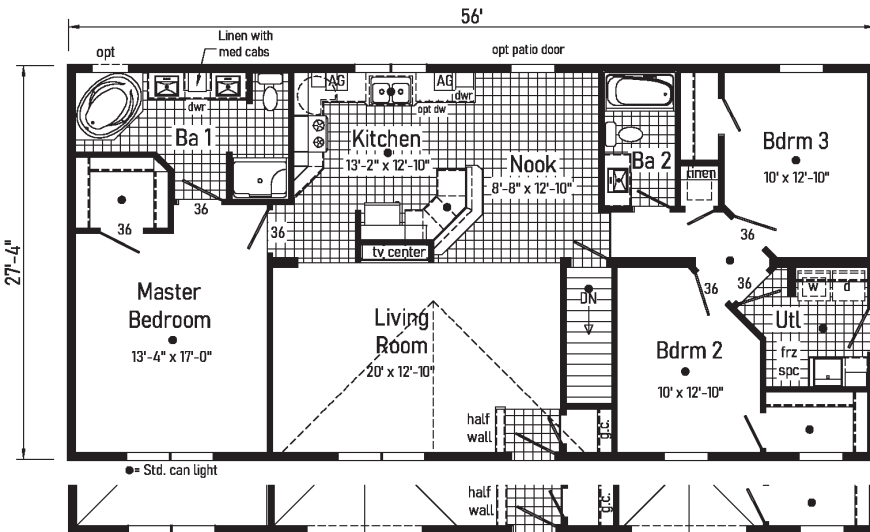
9



**Optional  
4'x6' Walk-In  
Tile Shower**



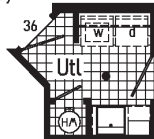
**Opt. Recessed Covered  
Entry with Columns**



**Opt. 27'-4" Dormer w/Bump-Out**

**Curb Side Exterior Options**

**Opt. Box-Bay**



**Opt. Water Heater  
(omits frz spc)**

## 2M3009-R 2856

Style: Ranch or Cape

Square Feet: 1531

Bedrooms: 3

Bathrooms: 2

### Optional Features:

- 7/12 Roof
- 27'-4" Dormer with Bumpout
- Dutch Eaves
- Gable Deco
- Box Bay 42
- Vertical Siding
- Shake Siding Accent
- Window Lineals
- Window Grids
- Upgraded Front Door

# Jasper

## 2M3010-R 2858

Style: Ranch or Cape

Square Feet: 1585

Bedrooms: 3

Bathrooms: 2

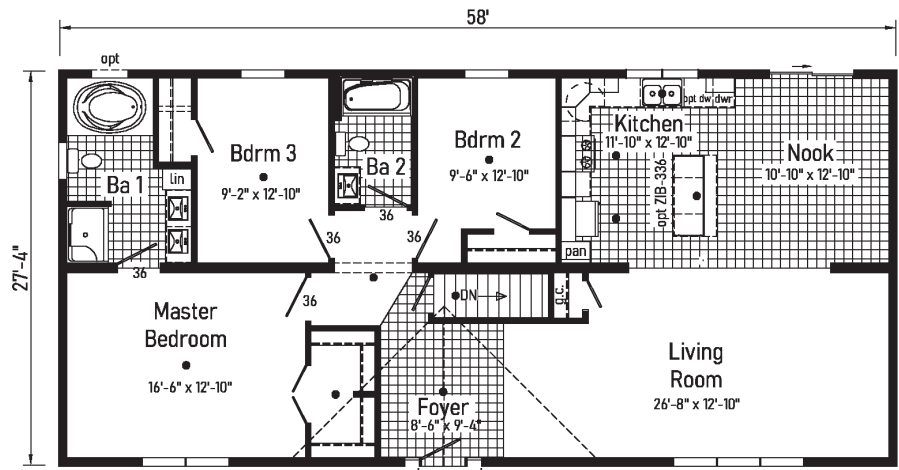
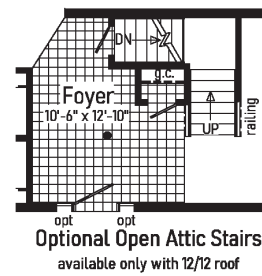
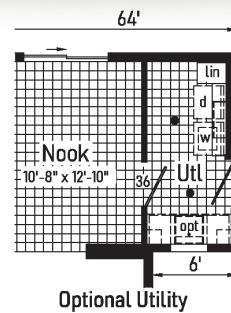
### Optional Features:

- 27'-4" Dormer with Bumpout
- 6' Cape Dormers with Small Windows
- Dutch Eaves
- Full Eave Return
- Recessed Entry
- Utility Room
- Shake Siding Accent
- Clay Trim Package
- Window Grids
- Upgraded Front Door
- 2 Front Door Lights
- Sidelites

### Features On-Site

### by Others:

- Stone Facade



Optional 4'x6' Walk-In Tile Shower

Optional Recessed Entry

opt 27'-4" dormer w/ bump-out  
Curb Side Exterior Options

Living Room  
27'-8" x 12'-10"

Opt. Recessed Covered Entry with Columns



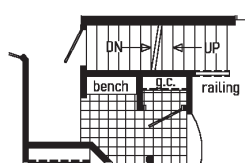
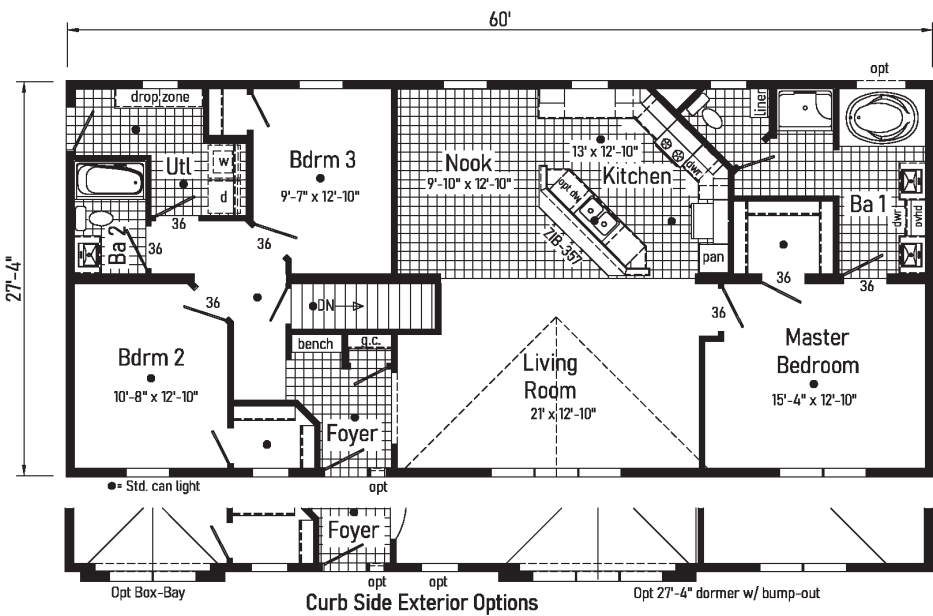
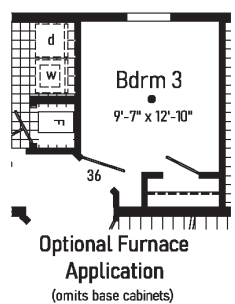
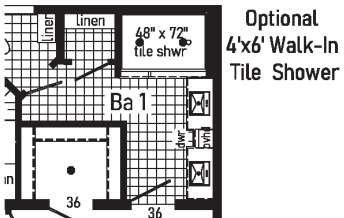
Optional Freestanding Tub





# Heathcliff

11



**Opt. Open Attic Stairs**  
Only available with 12/12 roof

## 2M3012-R 2860

Style: Ranch or Cape  
Square Feet: 1640  
Bedrooms: 3  
Bathrooms: 2

### Optional Features:

- 12/12 Roof
- 8' Cape Dormer
- 27'-4" Dormer with Bumpout
- Dutch Eaves
- Full Eave Return
- Box Bay 42
- Vertical Siding
- Window Grids
- Upgraded Front Door
- 2 Front Door Lights
- Sidelite

### Features On-Site

### by Others:

- Stone Facade

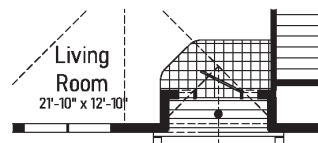


**2M3013-R 2864**

**Bathrooms: 2**

- Sidelite

- Garage



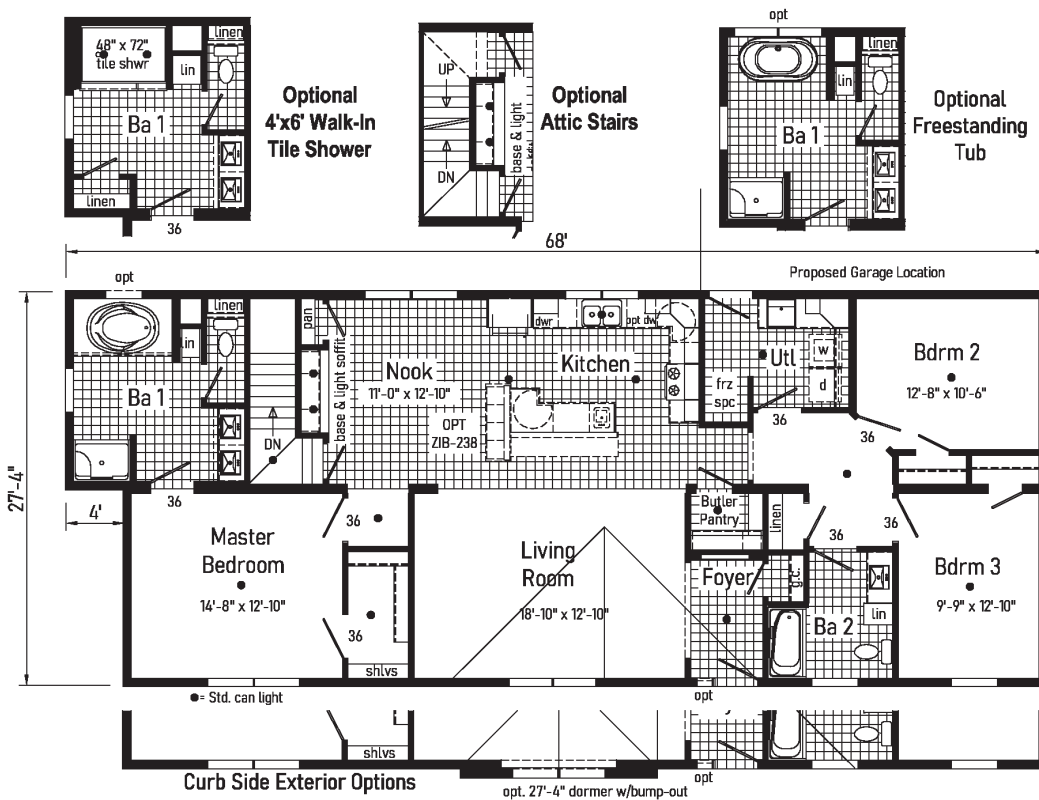
**Opt. Recessed Covered Entry with Columns**  
(omits g.c.)





# Weatherby

13



## 2M3014-R 2868/64

Style: Ranch or Cape

Square Feet: 1804

Bedrooms: 3

Bathrooms: 2

### Optional Features:

- 12/12 Roof
- 6' Cape Dormers
- 27'-4" Dormer with Bump-out
- Dutch Eaves
- Full Eave Return
- Vertical Siding
- Shake Siding Accent
- Window Lineals
- Window Grids
- Upgraded Front Door
- Sidelite



*Afton*

14

## 2M3018-X 3260

Style: Ranch or Cape

Square Feet: 1860

Bedrooms: 3

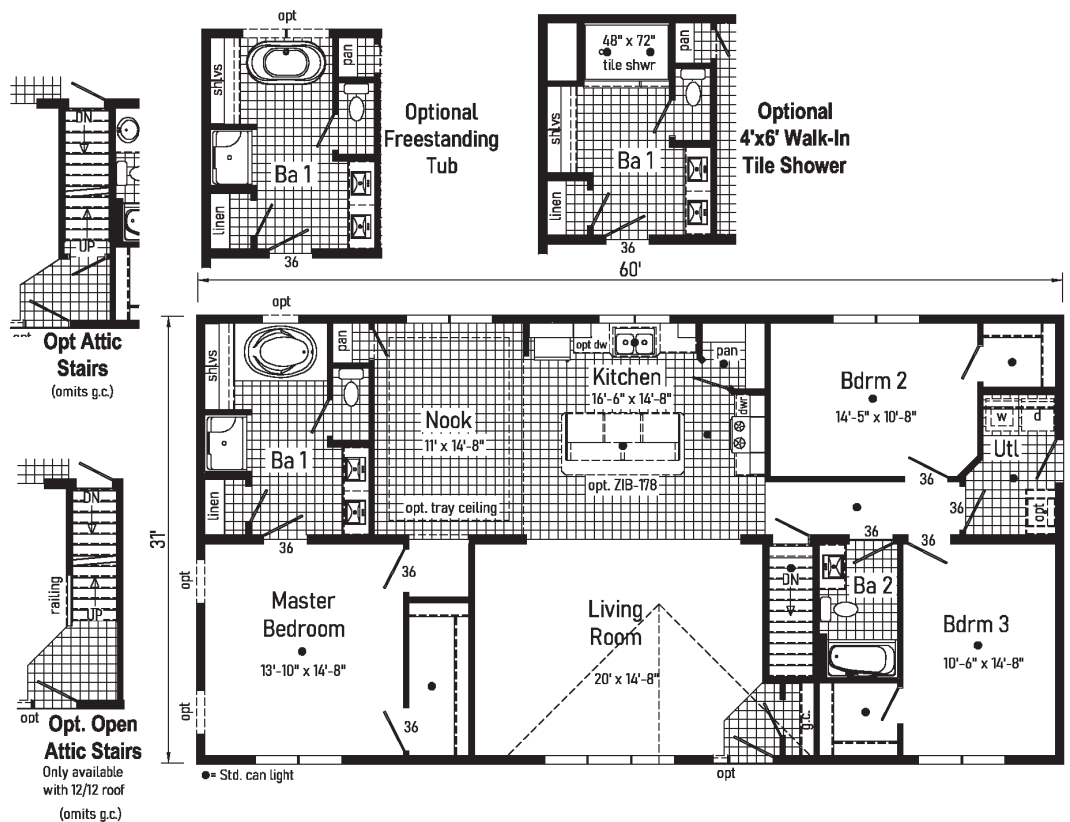
Bathrooms: 2

### Optional Features:

- 7/12 Roof
- Vertical Siding
- Window Grids
- Upgraded Front Door
- Sidelite

### Features On-Site by Others:

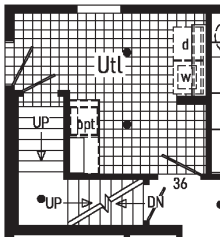
- Covered Porch
- Gutters and Downspouts



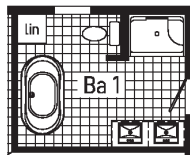




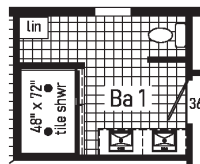
# Pemberton



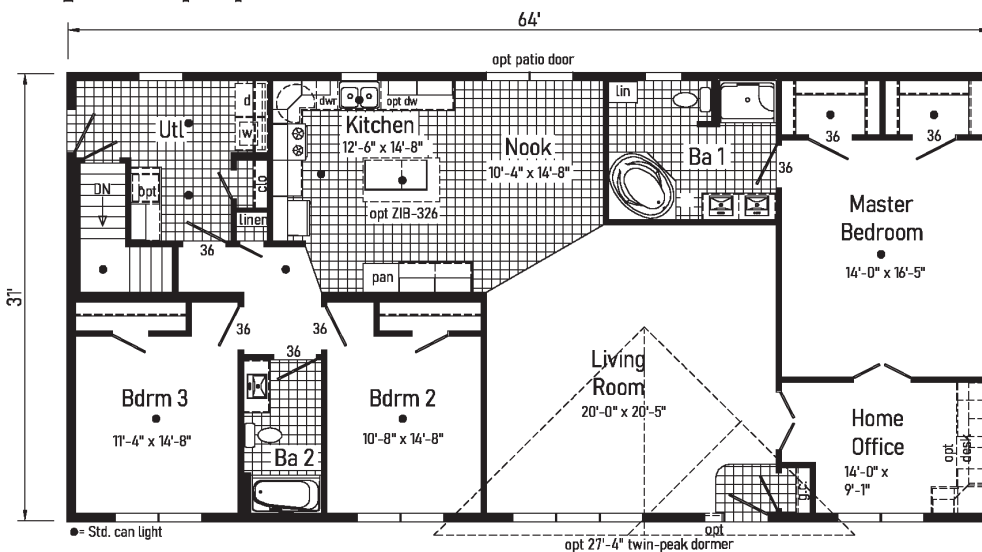
**Opt Attic Stairs**  
(omits Linen & Clo)



**Optional Freestanding Tub**



**Optional 4'x6' Walk-In Tile Shower**



## 2M3020-X 3264

Style: Ranch or Cape

Square Feet: 1984

Bedrooms: 3

Bathrooms: 2

Home Office

### Optional Features:

- 7/12 Roof
- Box Bay 42
- Market Square Siding
- Shake Siding Accent
- Outside Corner Trim
- Window Grids
- Window Lineals
- Upgraded Front Door
- 2 Front Door Lights
- Sidelite

### Features On-Site

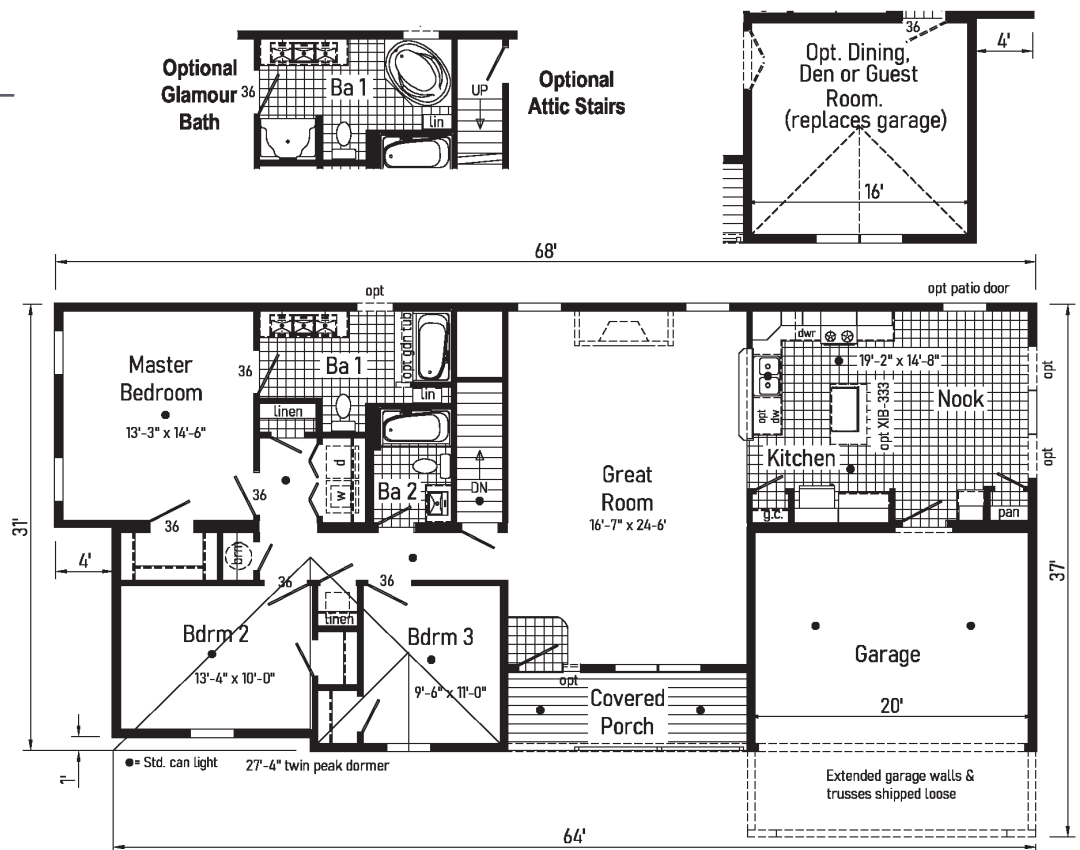
### by Others:

- Covered Porch
- Gable Deco

**Style: Ranch or Cape**  
**Square Feet: 1664**  
**Bedrooms: 3**  
**Bathrooms: 2**

- Dutch Eaves
- Full Eave Return
- Gable Deco
- Shake Accent Siding
- Window Grids
- Upgraded Front Door
- Sidelite

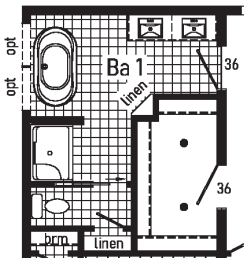
- Stone Facade
- Extended Garage
- Gutters and Downspouts



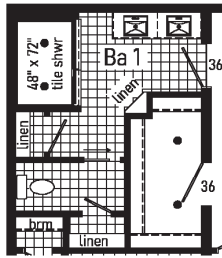




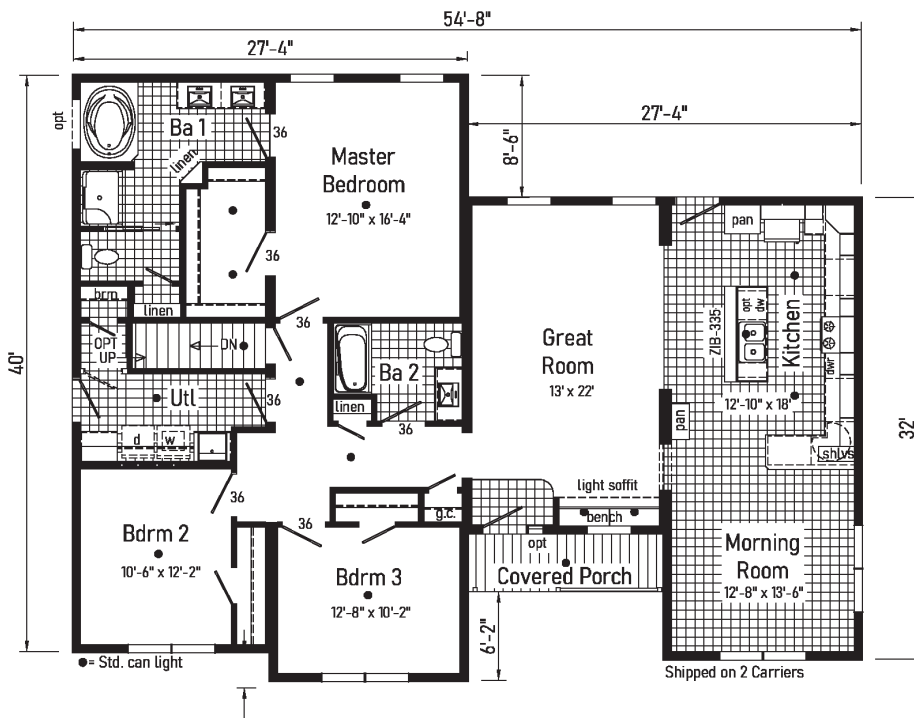
# Wiltshire



Optional  
Freestanding  
Tub



Optional  
4'x6' Walk-In  
Tile Shower



**2M3015-R 4254/8**

Style: Ranch or Cape

Square Feet: 1878

Bedrooms: 3

Bathrooms: 2

## Optional Features:

- 12/12 Roof
- 6' Hipped Cape Dormer
- Window in Gable End
- Dutch Eaves
- Full Eave Return
- Clay Trim Package
- Window Grids
- Window Lineals
- Upgraded Front Door
- Sidelite

## Features On-Site

### by Others:

- Stone Facade
- Gable Deco





# Augustine



Scan to Watch Video!

18

## 3M3001-R 4150/44

Style: Ranch or Cape

Square Feet: 1649

Bedrooms: 3

Bathrooms: 2

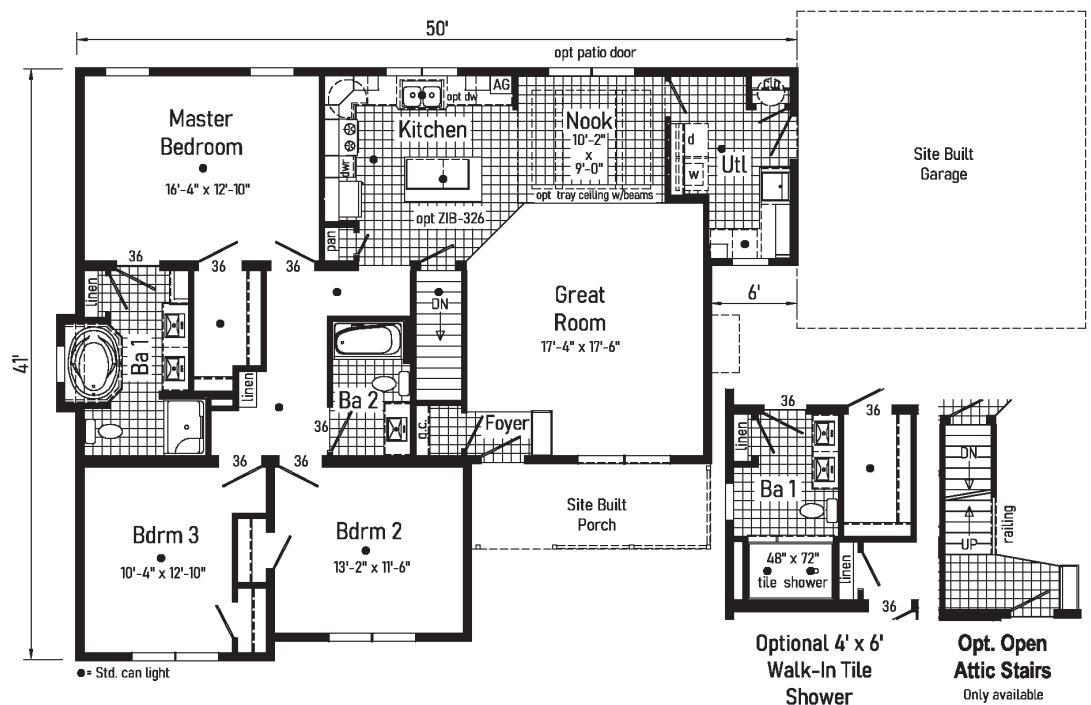
### Optional Features:

- 9/12 Roof Pitch
- 8' Dormer with Two Windows & Full Return
- Shake Siding
- Vertical Siding
- Full Return
- Dutch Eaves
- Upgraded Front Door
- Lineals
- Gable Window
- Window Grids

### Features On-Site

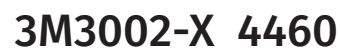
#### by Others:

- Porch
- Garage





# Canton



**Bathrooms: 2**

**- Upgraded Front Door**

## - Gutters and Downspouts



Leland

20

## 4M3001-R 4164/60

Style: Ranch or Cape

Square Feet: 1943

Bedrooms: 3

Bathrooms: 2

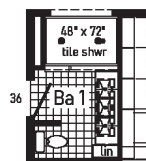
### Optional Features:

- Window at Gable End
- Shake Siding Accent
- Window Grids
- Window Lineals
- Upgraded Front Door

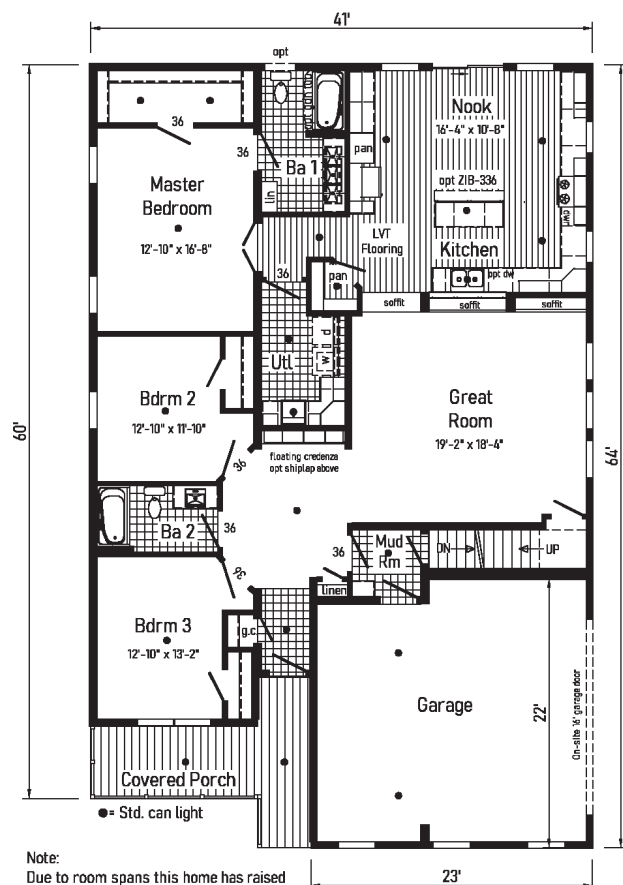
### Features On-Site

#### by Others:

- Gutters & Downspouts



Optional  
4'x6' Walk-In  
Tile Shower



Note:  
Due to room spans this home has raised  
beams in attic. To reduce beam height plan  
must be altered and room spans reduced.





# Leland



Scan to Watch Video!







# Woodcliff

22

## 2MC3002-R 2644

Style: Cape

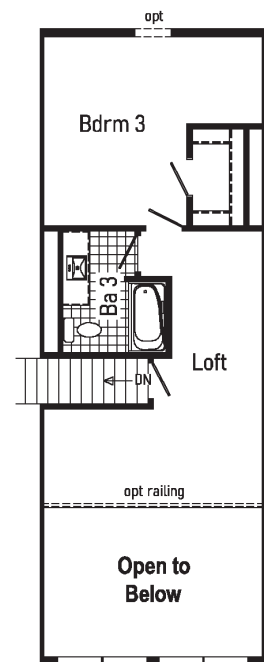
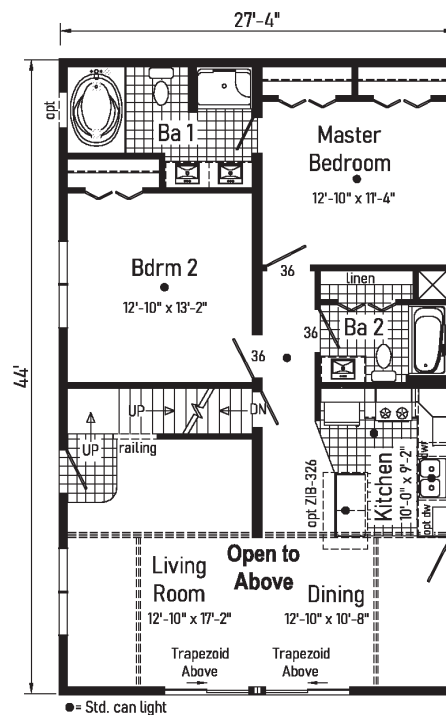
Square Feet: 1144 + 518

Bedrooms: 3

Bathrooms: 3

### Optional Features:

- Market Square Siding
- Clay Trim Package
- Trapezoid Windows
- Window Grids
- Upgraded Front Door
- Composite Decking



Approx. 518 Sq. Ft.

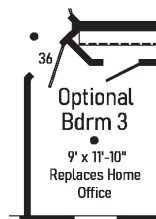
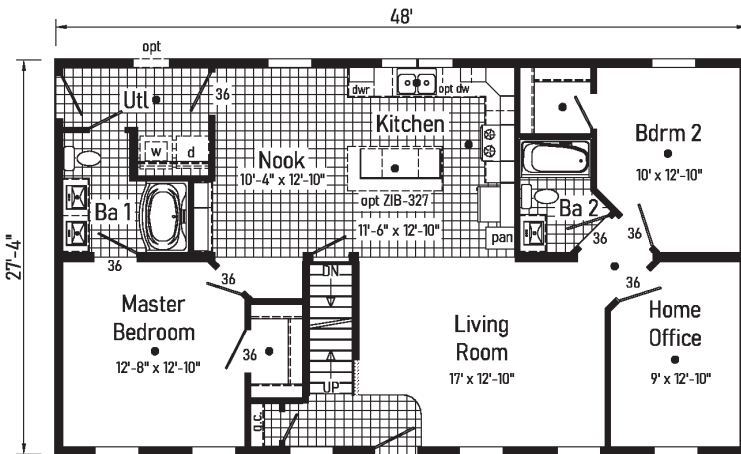
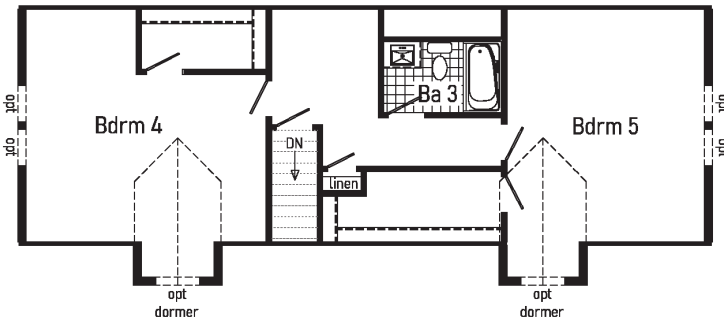
Proposed Second Floor:  
All design materials and work to be the responsibility of the builders on site to local codes. Light, vent, egress, heating and plumbing are the responsibility of the builder.

Second Floor by Others





# Kensington



● = Std. can light

## 2MC3003-R 2848

Style: Cape  
Square Feet: 1312 + 830  
Bedrooms: 5  
Bathrooms: 3  
Home Office

### Optional Features:

- 6' Cape Dormers
- Shake Siding Accent
- Window Lineals
- Window Grids
- Upgraded Front Door

### Features On-Site by Others:

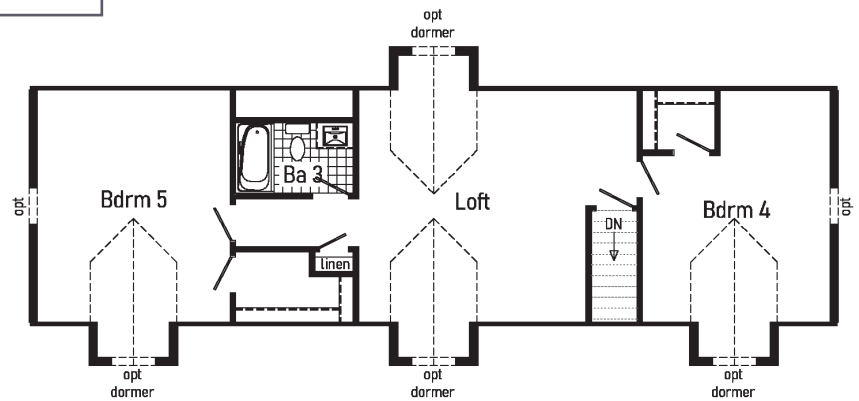
- Covered Porch
- Gutters and Downspouts

Covington

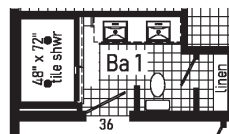
**Style:** Cape  
**Square Feet:** 1531 + 930  
**Bedrooms:** 5  
**Bathrooms:** 3

- 6' Cape Dormers
- Window Grids
- Market Square Siding
- Shake Siding Accent
- Window in Gable End
- Upgraded Front Door

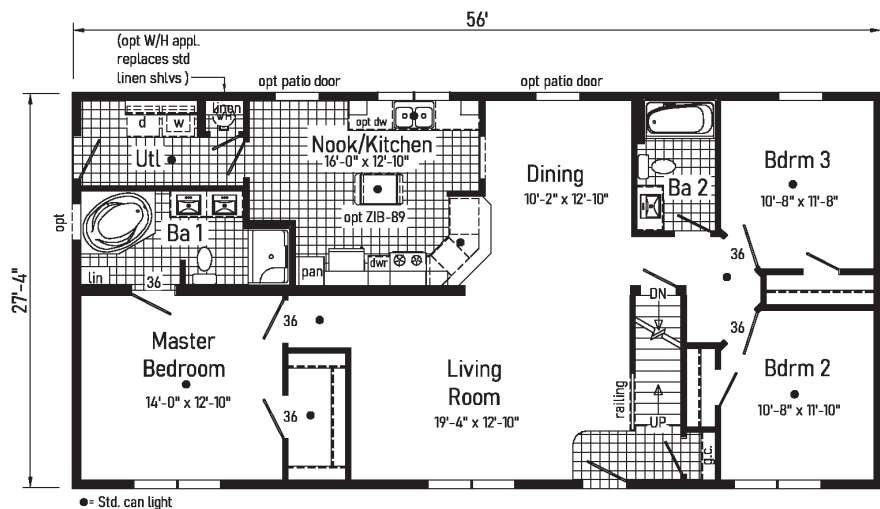
**- Covered Porch**



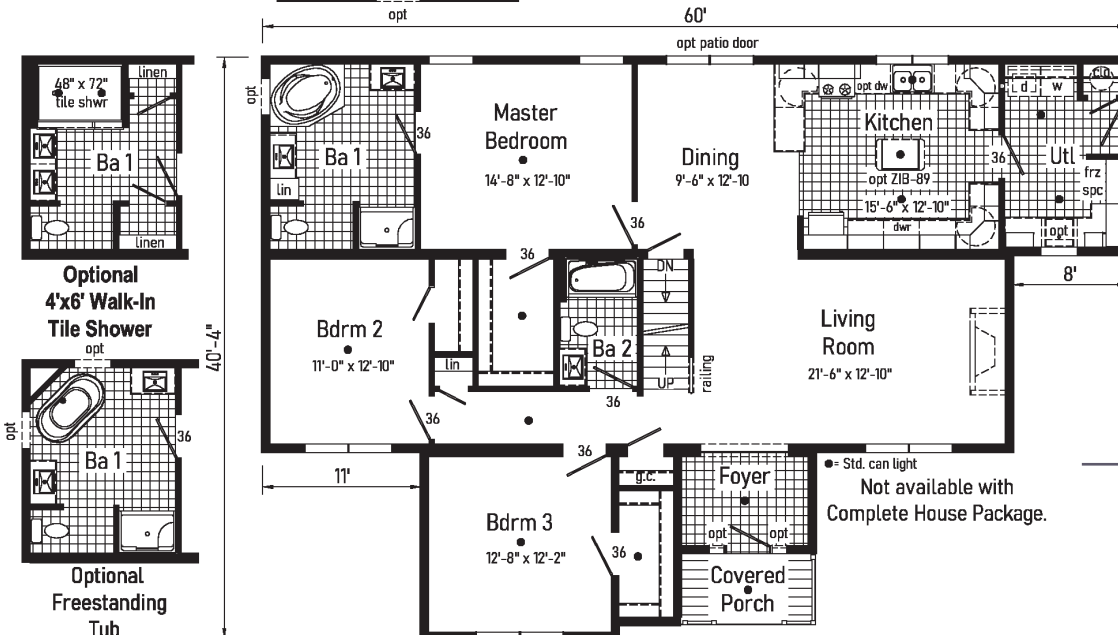
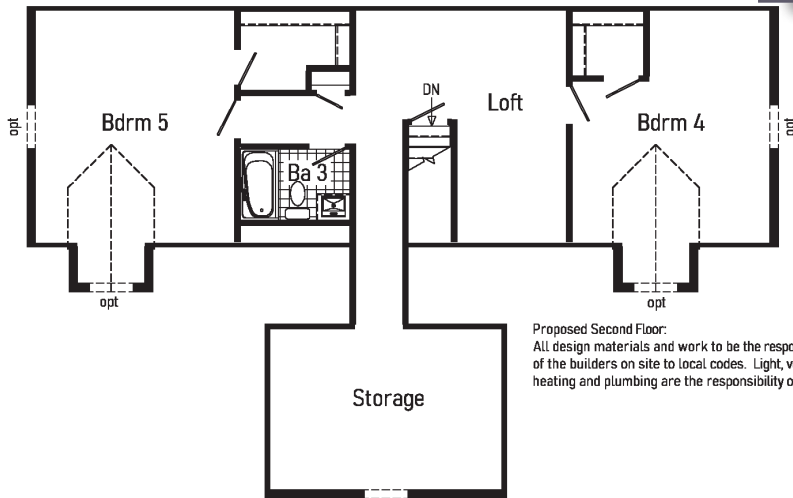
**Proposed Second Floor:**  
All design materials and work to be the responsibility of the builders on site to local codes. Light, vent, egress, heating and plumbing are the responsibility of the builder.



Optional  
4'x6' Walk-In  
Tile Shower







25

**3MC3001-R 4160/52**

**Style:** Cape  
**Square Feet:** 1872 + 1085  
**Bedrooms:** 5  
**Bathrooms:** 3

**Optional Features:**

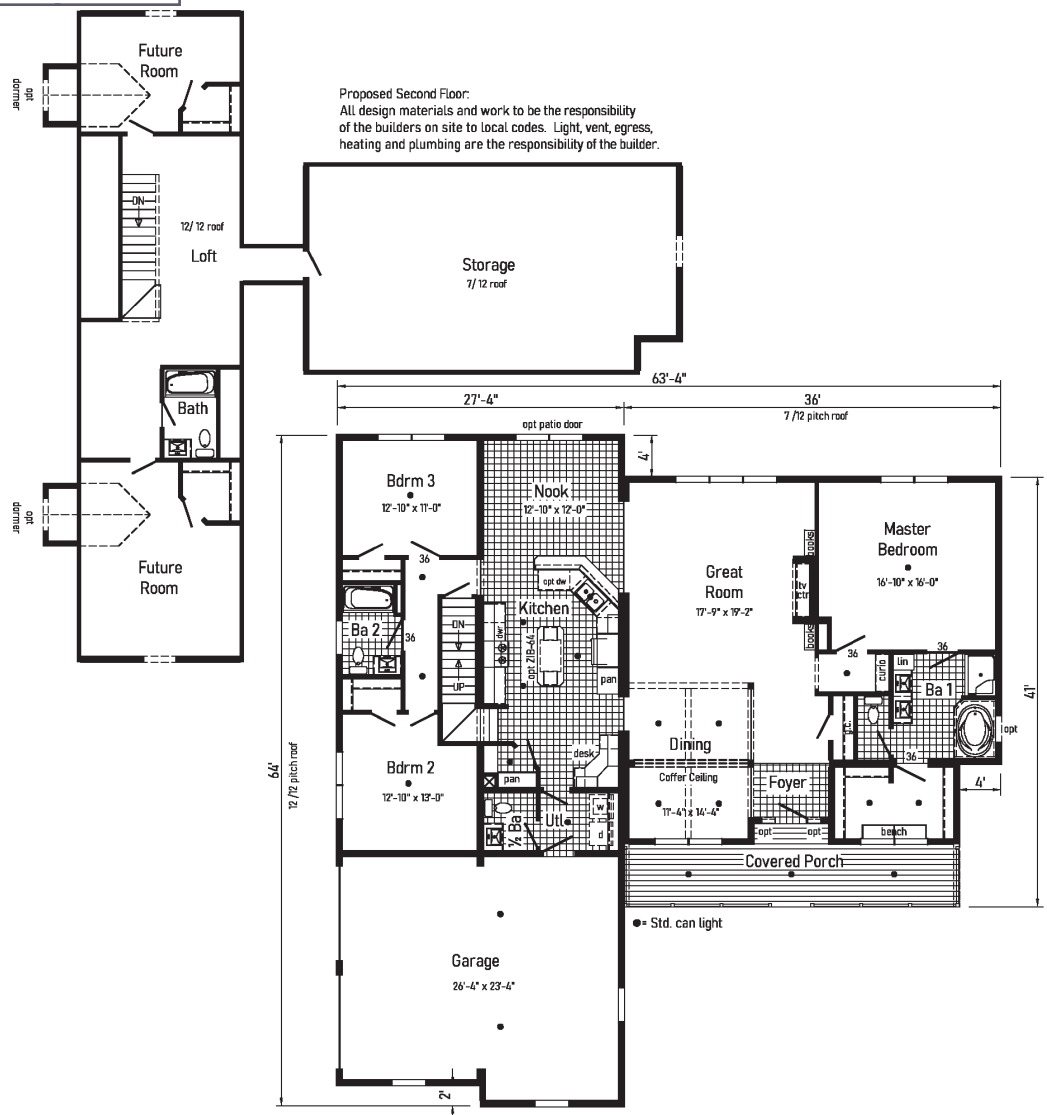
- 6' Cape Dormer
- Dutch Eaves
- Full Eave Return
- Window Grids
- Upgraded Front Door
- 2 Lights at Front Door
- Sidelites

**Features On-Site  
by Others:**

- Gable & Window Deco
- Brick Facade



**by Others:**  
- Brick On-Site







# inHouse experience

 Kitchen



Save Print Share

Cabinets  
Flat Panel Mission White - 42

Ceramic Backsplash Single Row  
None

Ceramic Backsplash Full  
None

Island Cabinets  
White

Counter Tops  
Spring Carnival

Island Counter Tops  
None

Flooring  
Orion Blanco 12x24 Plank

Appliances  
Stainless Steel

Windows  
Window Without Grds

Hardware  
Brushed Nickel Pull

Sinks  
Stainless Steel

Ceiling Cove & Trim Moulding  
Coveless w/ White

Our inHouse Experience lets you customize the decor selections for a Kitchen and also for both a Ranch & Two Story Exterior. All color choices are available to help you decide on your design style and create your dream home!

Visit our website today to give it a try! Share your creations with the social world, or print it out!





# Bellissimo

28

## 2M3401-R 2858

Style: Ranch or Cape

Square Feet: 1559

Bedrooms: 3

Bathrooms: 2

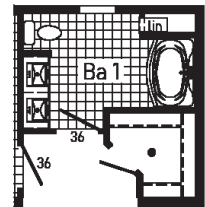
### Optional Features:

- 7/12 Roof
- 27'-4" Twin Peak Dormer with Full and Extended Eave
- Dutch Eaves
- Vertical Siding
- Shake Siding Accent
- Window Lineals
- Kick Plate
- Additional Windows

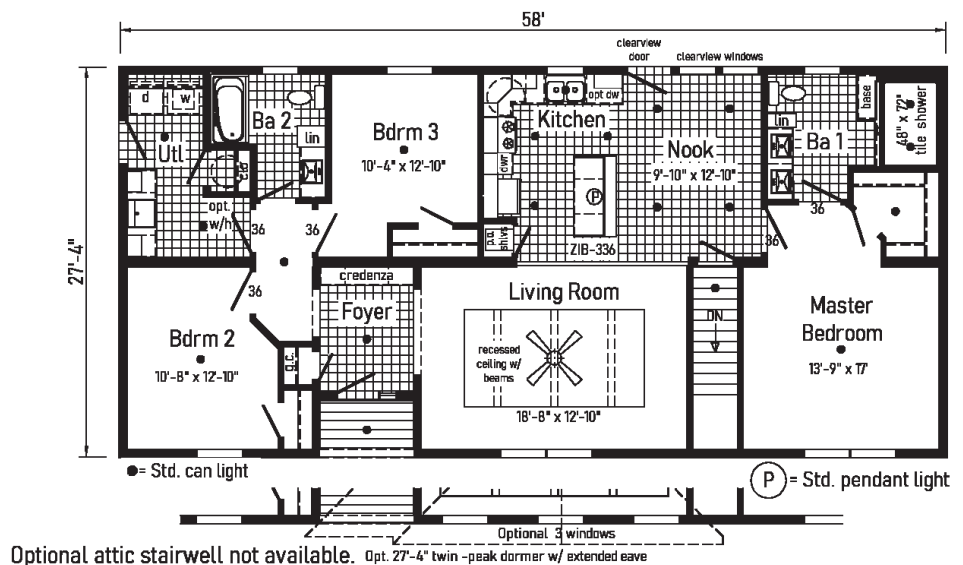
### Features On-Site

### by Others:

- Garage
- Gutters & Downspouts



Alternate  
Garden Tub Bath







*Bellissimo*



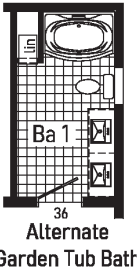
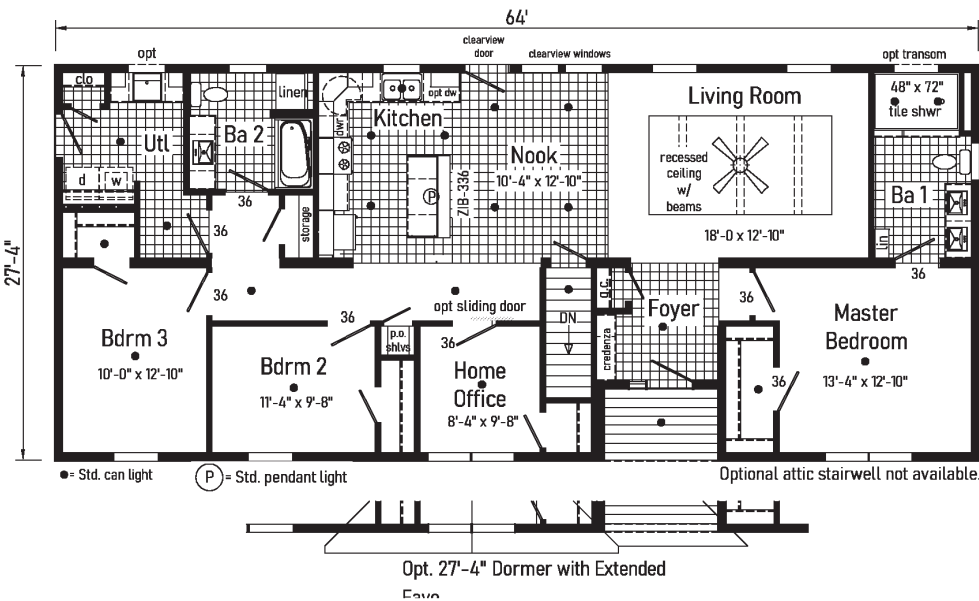
Scan to Watch Video!



# Bellissimo 2

2M3402-R 2864

Style: Ranch or Cape  
Square Feet: 1709  
Bedrooms: 3  
Bathrooms: 2  
Home Office

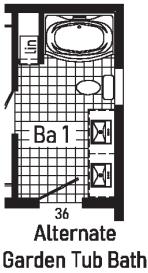
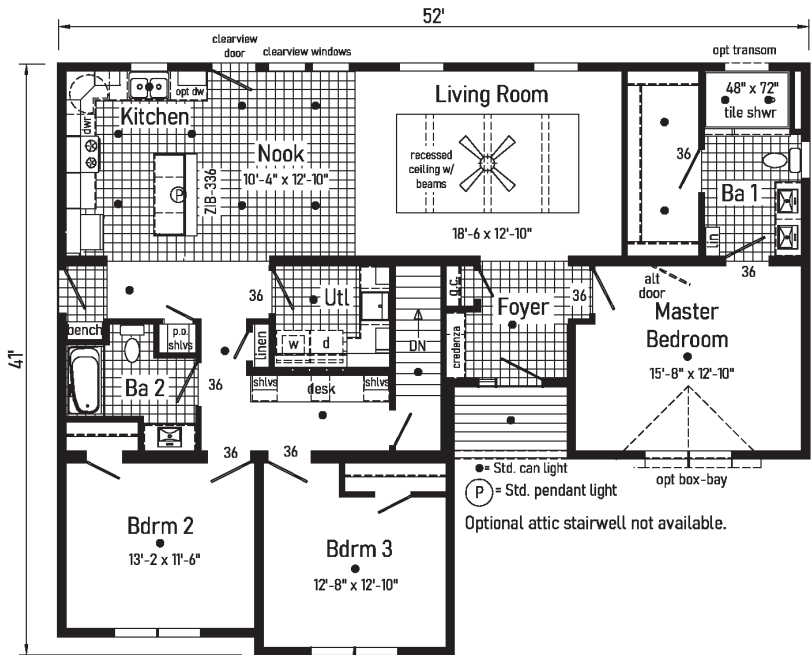


30

# Bellissimo 3

3M3401-R 4152

Style: Ranch or Cape  
Square Feet: 1736  
Bedrooms: 3  
Bathrooms: 2







# Ranch/Cape

2023



State Route 38  
Emlenton, PA 16373  
724-867-0189

[www.manorwoodhomes.com](http://www.manorwoodhomes.com)



inHouse  
experience



Connect with Us!



YouTube