

The Fairfield

3 Bedroom

2 Bath

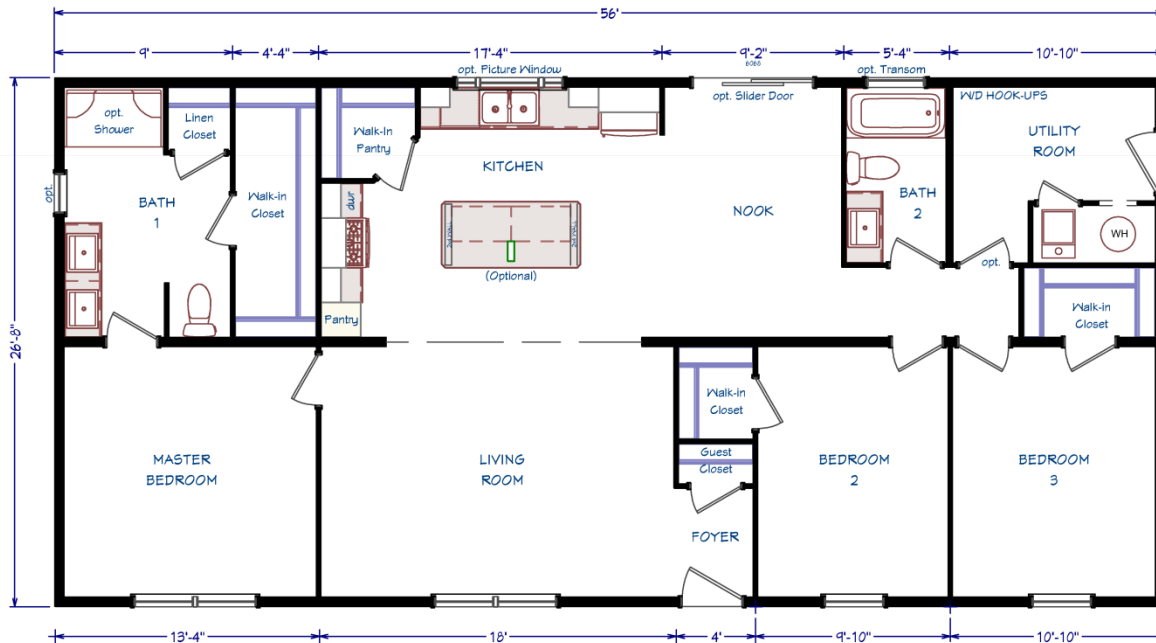
28 x 60 (56) / 1,493 s.f.



www.GoVillageHomes.com

1083 US Route 2, Berlin, VT 05602-8245

(802) 229-1592



Construction:

Double-Wide / Multi-Section
Manufactured Home

Color:

Cypress / White

Featuring 10" Eave Overhangs

Our Pricing includes Delivery, Installation, Sewer & Water Hook-Up, and Tax (if applicable)

[Please see an Installation Guide & Home Consultant for details]

Upgrades

- Energy Star (Extra Air Sealing & Insulation, 95% Eff Gas Furnace)
- Protective Wind Wrap Under Siding / Ice & Water Shield in Roof
- 4-Lite Front & 9-Lite Rear Fiberglass Exterior Door
- **Vinyl Sliding Glass Door in Nook**
- 24x36 Window in Master Bath & Transom Window in Bath 2
- Picture Window at Kitchen Sink
- **Full Drywall w/ OSB Sheathing, Profile Molding & Baseboards**
- Vinyl Flooring with Matching Transition in Living Room
- Exterior Faucet / 40 Gal. Water Heater / Perimeter Heat Ducts
- Interior Water Shut-Offs Where Accessible
- Main Water Shut-Off in Utility
- **Whirlpool Stainless Steel Appliances, including 4-Cycle Dishwasher, Over the Range Microwave & Plug for Elec. Range**
- **Hardwood French Country Oak Cabinetry**
- 40"x84" Kitchen Island w/ Seeded Glass Stem Lighting
- **Drawers over Doors in Kitchen Base Cabinets**
- Overhead Cabinet w/ Doors over Refrigerator
- **Stainless Steel Curved Farmer Sink in Kitchen**
- Hi-Rise Kitchen Faucet with Side Sprayer
- **Double Sink Vanity & Raised Toilet in Master Bath**
- 36x60 Fiberglass Shower w/seats in Master Bath
- 30x60 Fiberglass Tub/Shower in Bath 2
- China Sinks with Metal Faucets in Bathrooms
- Interior Door at Water Heater
- Interior Door w/ Return Air Vent at Utility Room
- Deluxe Paddle Fan w/ Light in Living Room
- (2) Extra LED Recessed Lights in Kitchen
- 3-Arm Hanging Light in Nook
- LED Recessed Light Over Shower in Master Bath
- Lights in Bedrooms / Phone Jack / (2) TV Jacks

Village Homes has tried to ensure that our printed materials for all of our homes are comprehensive and factual. We reserve the right, however, to make changes without notice in pricing, options added, specifications, materials, etc. Due to continuous product development and improvements, your home may differ in manufacturing, color and options available at the time of construction. Specifications, dimensions and measurements on printed materials are approximates based on in-house design and/or engineering drawings. Any included images are artist renderings and not intended to be an accurate representation of the home. Renderings and floor plans may be shown with optional features or third party additions.

Rev. 11/14



Installation Guide

Our Pricing includes DELIVERY, INSTALLATION and TAX (if applicable)

DOUBLE-WIDE & SINGLE-WIDE Home Installations Include:	VILLAGE HOMES	
SET, LEVEL & LAG HOME TOGETHER (DW)	✓	
SEAL MATE LINE / WALLS WITH EXPANSION FOAM	✓	
FINISH ROOFING	✓	
FINISH SIDING	✓	
HANG ALL INTERIOR DOORS / FINISH MATE WALL	✓	
SEAM CARPETS & FINISH FLOORING	✓	
INSTALL WATER LINE & HEAT TAPE TO SOURCE IN SLAB Line into Slab by Others	✓	
INSTALL SEWER LINE(S) TO DRAIN(S) IN SLAB Line into Slab by Others	✓	
INSTALL ANCHORS / TIE DOWNS	✓	
INSTALL PREMIUM WHITE VINYL SKIRTING Rapid Wall & R-Cotec Insulated Products - Optional	✓	
INSTALL (2) SETS OF FIBERGLASS STEPS W/ RAILING	✓	
CLEAN HOME (Damp Wipe Surfaces, Broom & Vacuum)	✓	
REMOVE TRASH	✓	
REMOVE AXLES & TIRES	✓	
MANUFACTURERS WARRANTY (New Homes)	✓	
7-10 YEAR LIMITED STRUCTURAL WARRANTY (New Homes)	✓	
HEATING / COOKING FUEL TANK(S) & INSTALLATION Buyer's Fuel Provider is Responsible for Tanks, Connections, Conversion to LP and Diagnostics	<i>Customer</i>	
CONNECT ELECTRICAL WIRE IN SLAB TO ELECTRICAL PANEL	<i>Optional</i>	
EXCAVATION / SLAB PREP / DRIVEWAY / GRADING / SEED & MULCH	<i>Optional</i>	
CONCRETE SLAB / FOUNDTION	<i>Optional</i>	
POLE / PEDISTAL / METER / DISCONNECT / CONDUIT / WIRE	<i>Optional</i>	
WELL / CONNECT TO MUNICIPAL WATER (including line into slab) Pressure Tank & Switch may be Required for Wells	<i>Optional</i>	
SEPTIC SYSTEM / CONNECT TO MUNICIPAL SEWER (including line into slab)	<i>Optional</i>	
GARAGE / DECK / PORCH	<i>Optional</i>	

1083 US Route 2, Berlin, VT 05602 | (802) 229-1592 | sales@Village-Homes.com

**Vermont & New Hampshire's MOST TRUSTED builder
of Modular & Manufactured Homes**