

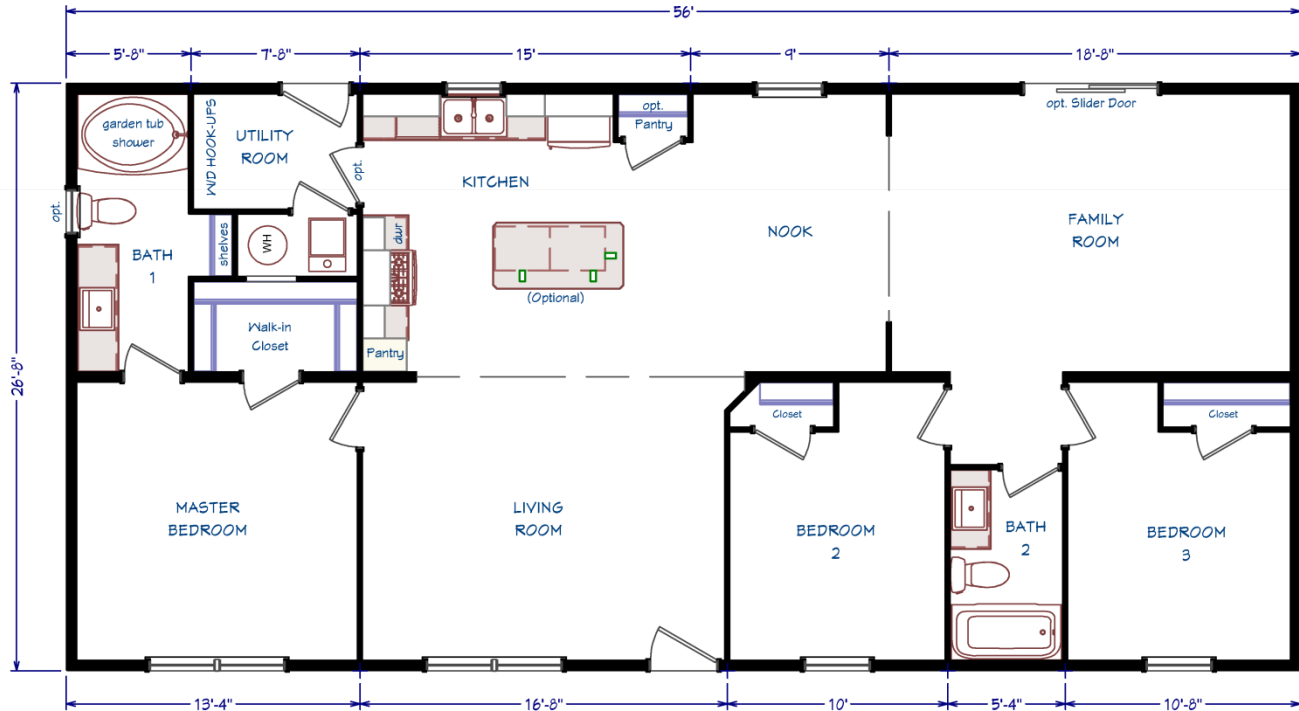
The Farmhouse

Family Room
3 Bedroom
2 Bath
28 x 60 (56) / 1,493 s.f.



www.GoVillageHomes.com

1083 US Route 2, Berlin, VT 05602-8245
(802) 229-1592



Construction:

Double-Wide / Multi-Section
Manufactured Home

Color:

Indigo / White

Featuring 10" Eave Overhangs

*Our Pricing includes Delivery, Installation, Sewer & Water Hook-Up, and Tax (if applicable)
[Please see an Installation Guide & Home Consultant for details]*

Upgrades

- Energy Star (Xtra Air Sealing & Insulation, 95% Eff Gas Furnace)
- **4' Stretch to 56' Box Length / Twin Peak Roof Dormer**
- Protective Wind Wrap & Ice Guard Roof Barrier
- Market Square Premium Vinyl Siding
- Vinyl Sliding Glass Door in Family Room
- 4-Lite Fiberglass Front Exterior Door
- 9-Lite Fiberglass Side Exterior Door
- 24x36 Vinyl Window in Master Bath
- Exterior Water Faucet / 40 Gallon Water Heater
- Interior Water Shut-Off Valves Where Accessible
- In-House Main Water Line Shut-Off in Utility Room
- Perimeter Heat Ducts & Registers
- Interior Door with Return Air Vent at Utility Room
- Pantry Closet in Kitchen
- **Vinyl Flooring replacing Carpet in Living Room**
- Black Knobs on Cabinet Doors & Drawers
- **36x72 Kitchen Island with Stool Seating**
- 8" Deep Stainless Steel Kitchen Sink
- Kitchen Faucet with Side Sprayer
- Stainless Whirlpool Appliances: 20 Cu. Ft. Refrigerator, Microwave over Deluxe Range (Plug for Elec. Range Also), Tall Tub Dishwasher
- Extra LED Recessed Lights in Kitchen
- **(2) Deluxe Industrial Stem Lights over Kitchen Island**
- 1-Piece Fiberglass Tub/Shower in Bath 2
- **Round Front FG Tub/Shower w/ Curved Rod - Master Bath**
- China Sinks in Bathrooms
- Ceiling Lights in Bedrooms & Living Room
- Deluxe Paddle Fan with Light in Family Room
- (2) TV Jacks / Phone Jack

Village Homes has tried to ensure that our printed materials for all of our homes are comprehensive and factual. We reserve the right, however, to make changes without notice in pricing, options added, specifications, materials, etc. Due to continuous product development and improvements, your home may differ in manufacturing, color and options available at the time of construction. Specifications, dimensions and measurements on printed materials are approximates based on in-house design and/or engineering drawings. Any included images are artist renderings and not intended to be an accurate representation of the home. Renderings and floor plans may be shown with optional features or third party additions.

Rev. 11/14



Installation Guide

Our Pricing includes DELIVERY, INSTALLATION and TAX (if applicable)

DOUBLE-WIDE & SINGLE-WIDE Home Installations Include:	VILLAGE HOMES
SET, LEVEL & LAG HOME TOGETHER (DW)	✓
SEAL MATE LINE / WALLS WITH EXPANSION FOAM	✓
FINISH ROOFING	✓
FINISH SIDING	✓
HANG ALL INTERIOR DOORS / FINISH MATE WALL	✓
SEAM CARPETS & FINISH FLOORING	✓
INSTALL WATER LINE & HEAT TAPE TO SOURCE IN SLAB Line into Slab by Others	✓
INSTALL SEWER LINE(S) TO DRAIN(S) IN SLAB Line into Slab by Others	✓
INSTALL ANCHORS / TIE DOWNS	✓
INSTALL PREMIUM WHITE VINYL SKIRTING Rapid Wall & R-Cotec Insulated Products - Optional	✓
INSTALL (2) SETS OF FIBERGLASS STEPS W/ RAILING	✓
CLEAN HOME (Damp Wipe Surfaces, Broom & Vacuum)	✓
REMOVE TRASH	✓
REMOVE AXLES & TIRES	✓
MANUFACTURERS WARRANTY (New Homes)	✓
7-10 YEAR LIMITED STRUCTURAL WARRANTY (New Homes)	✓
HEATING / COOKING FUEL TANK(S) & INSTALLATION Buyer's Fuel Provider is Responsible for Tanks, Connections, Conversion to LP and Diagnostics	<i>Customer</i>
CONNECT ELECTRICAL WIRE IN SLAB TO ELECTRICAL PANEL	<i>Optional</i>
EXCAVATION / SLAB PREP / DRIVEWAY / GRADING / SEED & MULCH	<i>Optional</i>
CONCRETE SLAB / FOUNDTION	<i>Optional</i>
POLE / PEDISTAL / METER / DISCONNECT / CONDUIT / WIRE	<i>Optional</i>
WELL / CONNECT TO MUNICIPAL WATER (including line into slab) Pressure Tank & Switch may be Required for Wells	<i>Optional</i>
SEPTIC SYSTEM / CONNECT TO MUNICIPAL SEWER (including line into slab)	<i>Optional</i>
GARAGE / DECK / PORCH	<i>Optional</i>

1083 US Route 2, Berlin, VT 05602 | (802) 229-1592 | sales@Village-Homes.com

**Vermont & New Hampshire's MOST TRUSTED builder
of Modular & Manufactured Homes**