



A **CAVCO** COMPANY

20  
25



*Classic*

# TABLE OF CONTENTS



| <u>NAME</u>         | <u>MODEL</u> | <u>SQ FT</u> | <u>PAGE</u> |
|---------------------|--------------|--------------|-------------|
| <b>RANCH</b>        |              |              |             |
| American Spirit 1   | 2M3053R      | 1367         | 3           |
| American Spirit 2   | 2M3055R      | 1531         | 4           |
| American Spirit 3   | 2M3056R      | 1640         | 4           |
| Chester             | 2M3001N      | 832          | 5           |
| Saginaw             | 2M3007R      | 1203         | 6           |
| Scotsdale           | 2M3009R      | 1531         | 7           |
| Yorkshire           | 2M3021X      | 1664         | 8           |
| Wiltshire           | 2M3015X      | 1878         | 9           |
| Homestead           | 2M3054X      | 1612         | 10          |
| Homestead Photos    |              |              | 11          |
| LeLand              | 4M3001R      | 1943         | 12          |
| LeLand Photos       |              |              | 13          |
| Garrison            | 4M3002R      | 1553         | 14          |
| Prestwick           | 4M3003R      | 1684         | 15          |
| Gladiator           | 2M3050X      | 2078         | 16          |
| <b>CAPE</b>         |              |              |             |
| Woodcliff           | 2MC3002N     | 1144         | 17          |
| Kensington          | 2MC3003R     | 1312         | 18          |
| Covington           | 2MC3004R     | 1531         | 19          |
| <b>BELLISSIMO</b>   |              |              |             |
| Bellissimo 1        | 2M3401R      | 1559         | 20          |
| Bellissimo 1 Photos |              |              |             |
| Bellissimo 2        | 2M2402R      | 1709         | 21          |
| <b>2-STORY</b>      |              |              |             |
| Marquette           | 6M3001N      | 1560         | 24          |
| Burlington          | 6M3018R      | 2186         | 25          |
| Paramont            | 6M3026R      | 2624         | 26          |

Style: Ranch  
 Square Feet: 1367  
 Size: 2850  
 Bedrooms: 3  
 Bathrooms: 2

Optional Features:

Features On-Site  
 by Others:

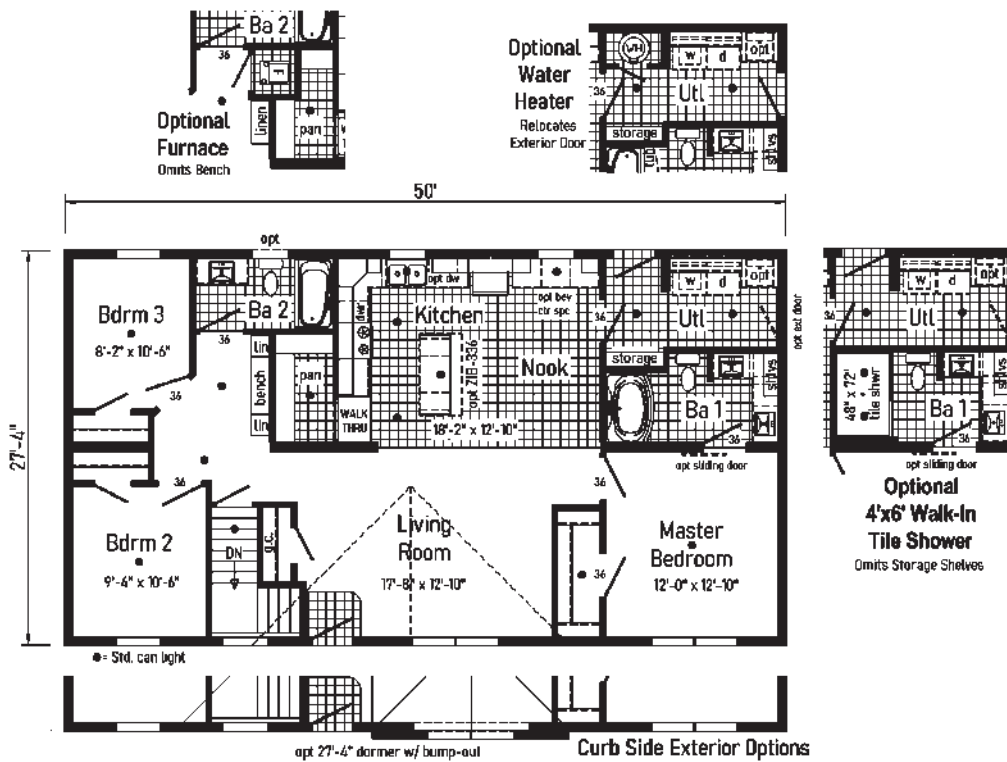
- Garage
- Gutters and Downspouts
- Corbels



*American Spirit 1*

**2M3053-R**

Some features shown on renderings may not be available or will have to be done on-site by others

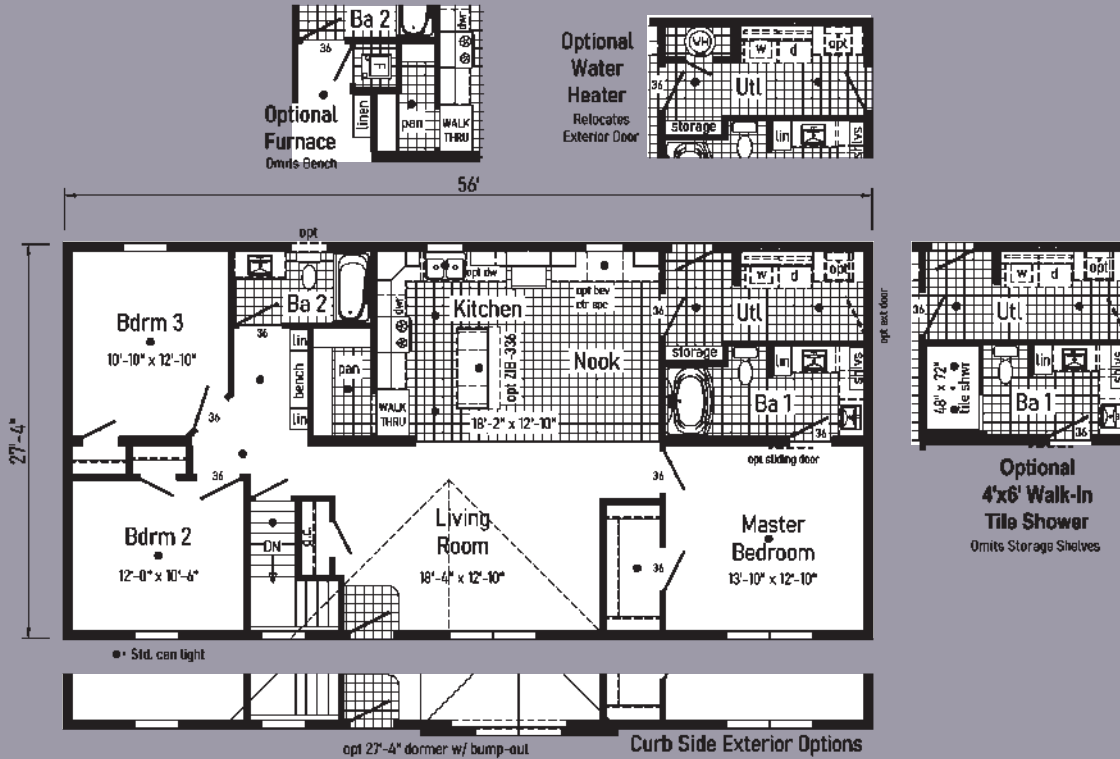




# American Spirit 2

**2M3055-R**

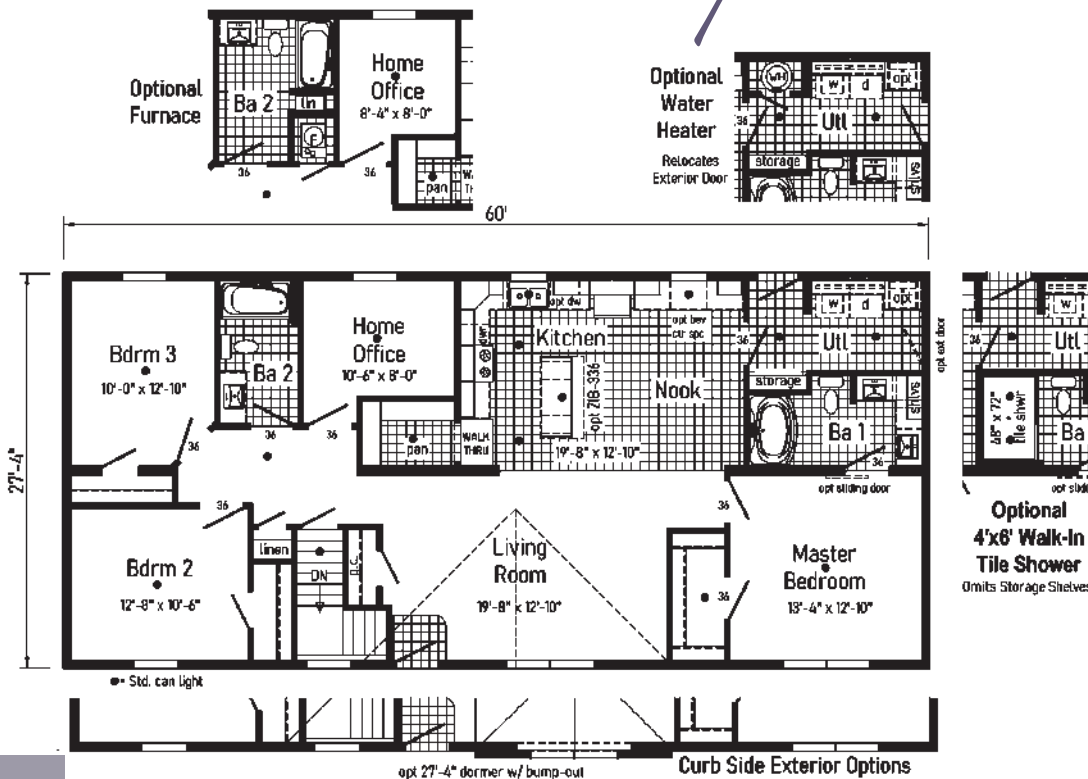
Style: Ranch  
 Square Feet: 1531  
 Size: 2856  
 Bedrooms: 3  
 Bathrooms: 2



# American Spirit 3

**2M3056-R**

Style: Ranch  
 Square Feet: 1640  
 Size: 2860  
 Bedrooms: 3  
 Bathrooms: 2



Style: Ranch or Cape  
 Square Feet: 832  
 Size: 2632  
 Bedrooms: 3  
 Bathrooms: 2

Optional Features:

- 12/12 Roof
- 6' Cape Dormers
- Shake Siding Accent
- Upgraded Front Door
- Octagon Window N/A

Features On-Site

by Others:

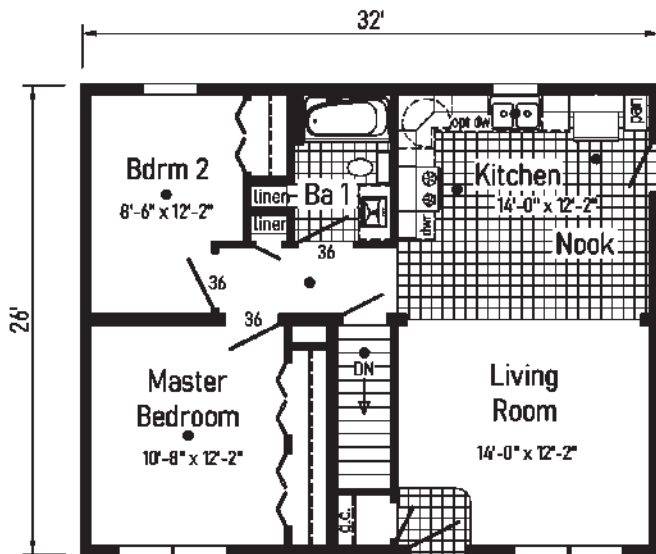
- Garage



# Chester

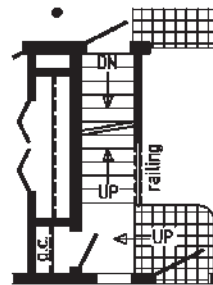
## 2M3001-N

Some features shown on renderings may not be available or will have to be done on-site by others

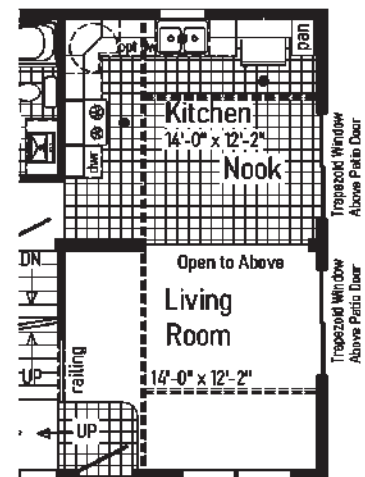


● = Std. can light

Note:  
 Transported on 1 carrier  
 Additional parts carrier required if butterflyed



opt octagon  
**Opt. Open Attic Stairs**  
 Only available with 12/12 roof



opt octagon  
**Optional Chalet with Opt 12/12 Roof**  
 Prow Roof, Patio Doors, Transom Windows & Balcony Above



Style: Ranch or Cape  
 Square Feet: 1203  
 Size: 2844  
 Bedrooms: 3  
 Bathrooms: 2

Optional Features:

- 12/12 Roof
- 6' Cape Dormers
- Vertical Siding
- Lineals
- Upgraded Front Door

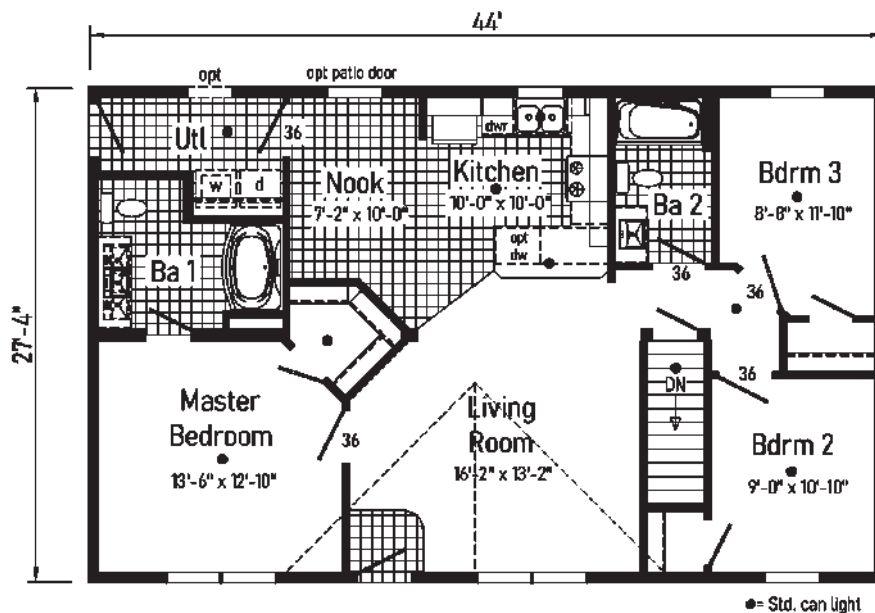
Features On-Site  
 by Others:

- Garage
- Covered Porch
- Gutters and Downspouts
- Dormer Gable Pediments

*Saginaw*

**2M3007-R**

Some features shown on renderings may not be available or will have to be done on-site by others





Style: Ranch or Cape  
 Square Feet: 1531  
 Size: 2856  
 Bedrooms: 3  
 Bathrooms: 2

Optional Features:

- 7/12 Roof
- 27'-4" Dormer with Bumpout
- Dutch Eaves
- Gable Deco
- Box Bay 42
- Vertical Siding
- Shake Siding Accent
- Window Lineals
- Window Grids

Features On-Site

by Others:

- Dormer Gable Pediment

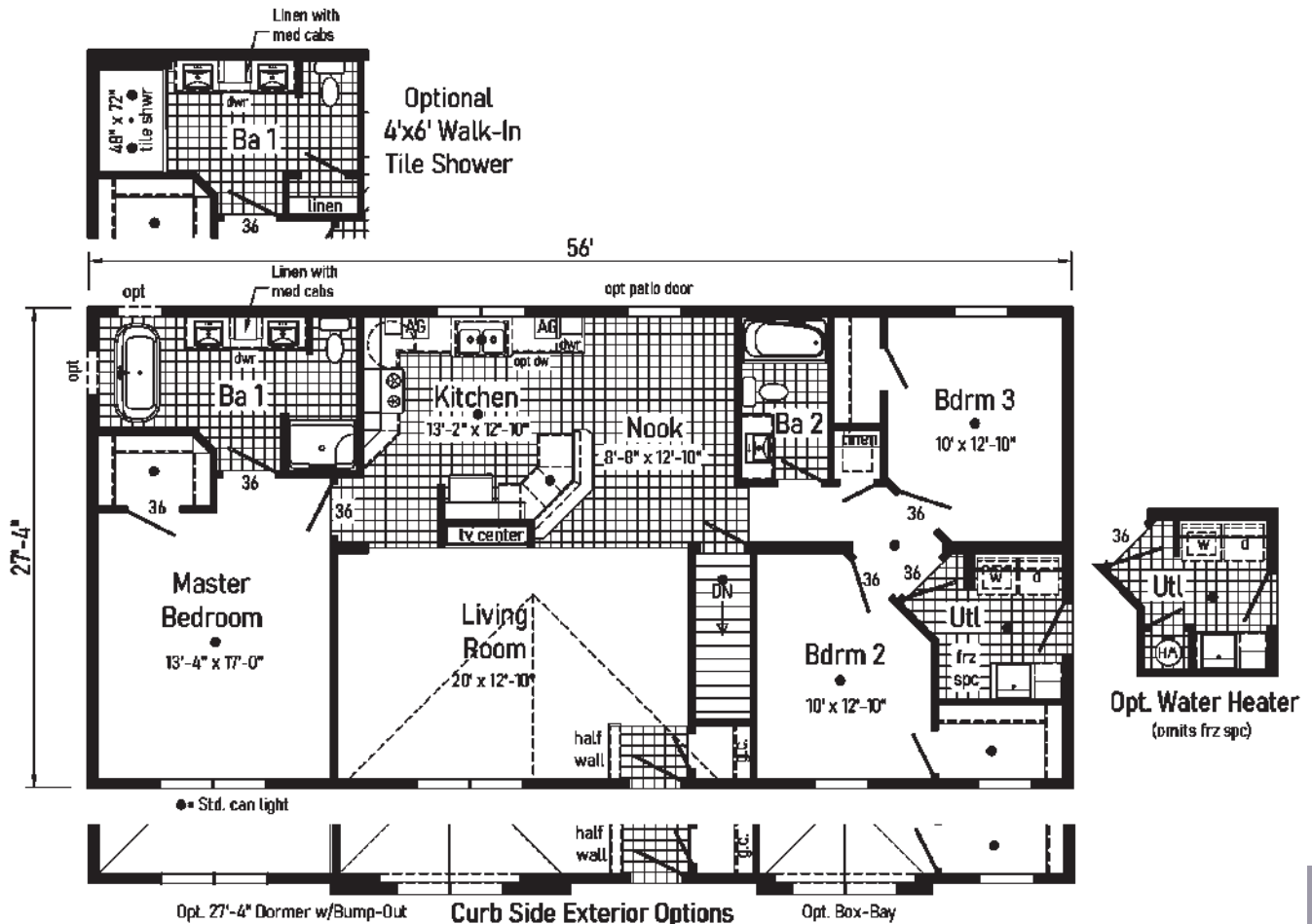
\*Note: Door N/A, See Options Brochure for Available Doors

Some features shown on renderings may not be available or will have to be done on-site by others



*Scotsdale*

**2M3009-R**





Style: Ranch or Cape  
 Square Feet: 1664  
 Size: 3268  
 Bedrooms: 3  
 Bathrooms: 2

Optional Features:

- Dutch Eaves
- Full Eave Return
- Gable Deco
- Shake Accent Siding
- Window Grids
- Sidelite

Features On-Site  
 by Others:

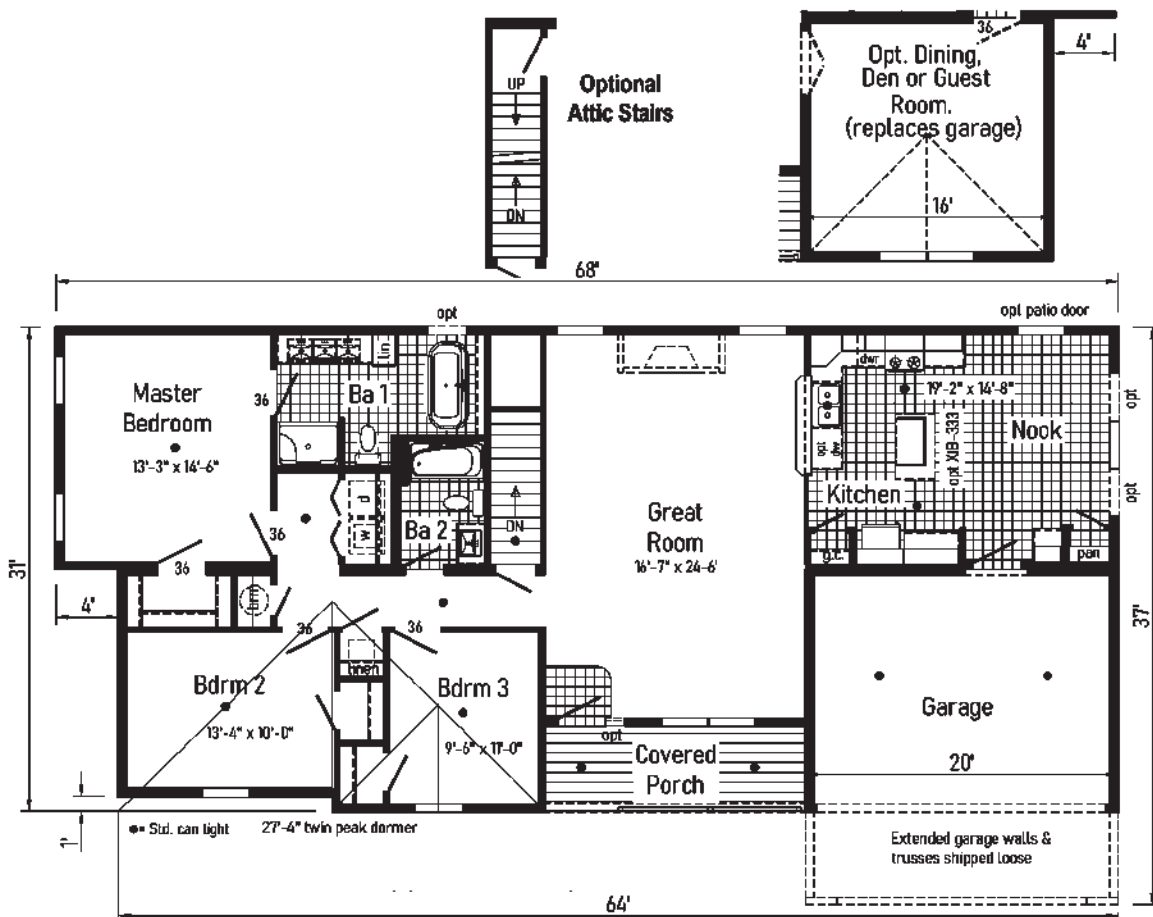
- Stone Facade
- Extended Garage
- Gutters and Downspouts
- Dormer Gable Pediments

\*Note: Door N/A, See Options Brochure for Available Doors

Some features shown on renderings may not be available or will have to be done on-site by others

# Yorkshire

## 2M3021-X





Style: Ranch or Cape  
 Square Feet: 1878  
 Size: 2856  
 Bedrooms: 3  
 Bathrooms: 2

Optional Features:

- 12/12 Roof
- 6' Cape
- Dormer
- Window in Gable End
- Dutch Eaves
- Full Eave Return
- Clay Trim Package
- Window Grids
- Window Lineals
- Upgraded Front Door
- Sidelite

Features On-Site  
 by Others:

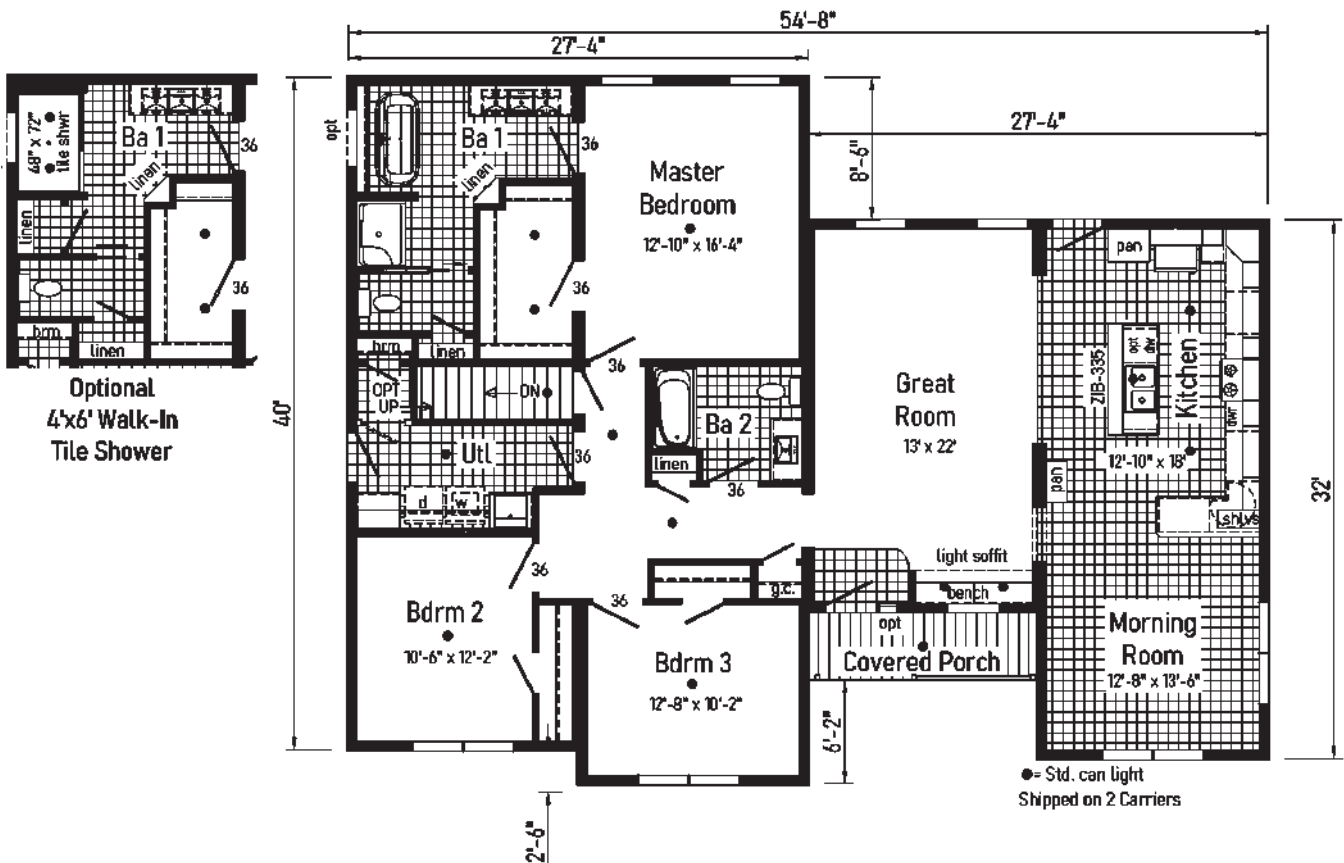
- Stone Facade
- Gable Deco

Some features shown on renderings  
 may not be available or will have to be  
 done on-site by others



*Wiltshire*

**2M3015-R**



Style: Ranch or Cape  
 Square Feet: 1612  
 Size: 3254/56  
 Bedrooms: 3  
 Bathrooms: 2

Optional Features:

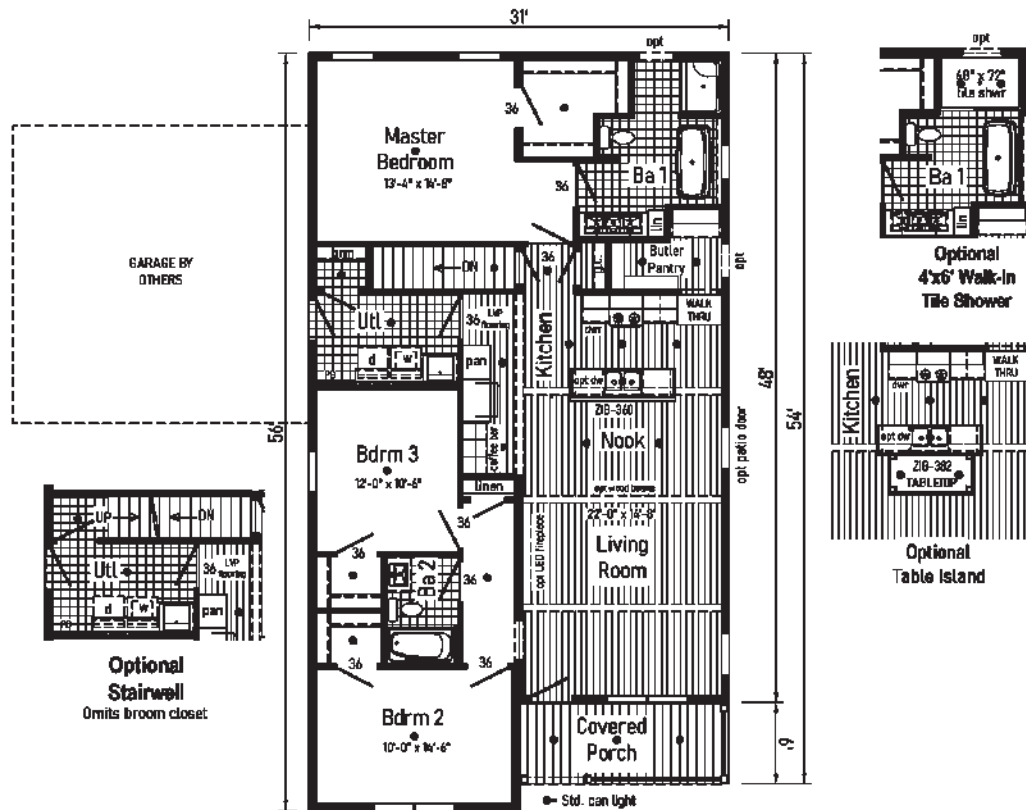
- Vertical Siding
- Black Bundle
- Black Windows
- Black Door
- Black Lineals
- Black Porch Posts & Rails
- Metal Roof Eave



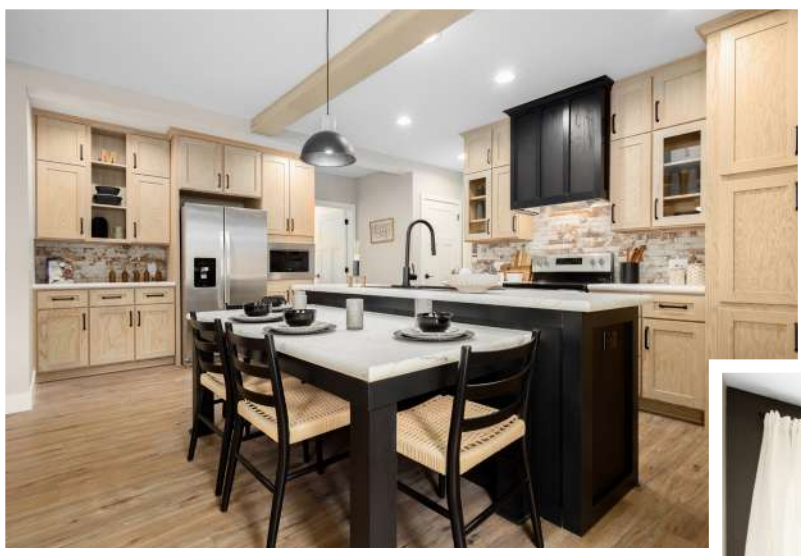
*Homestead*

Some features shown on renderings may not be available or will have to be done on-site by others

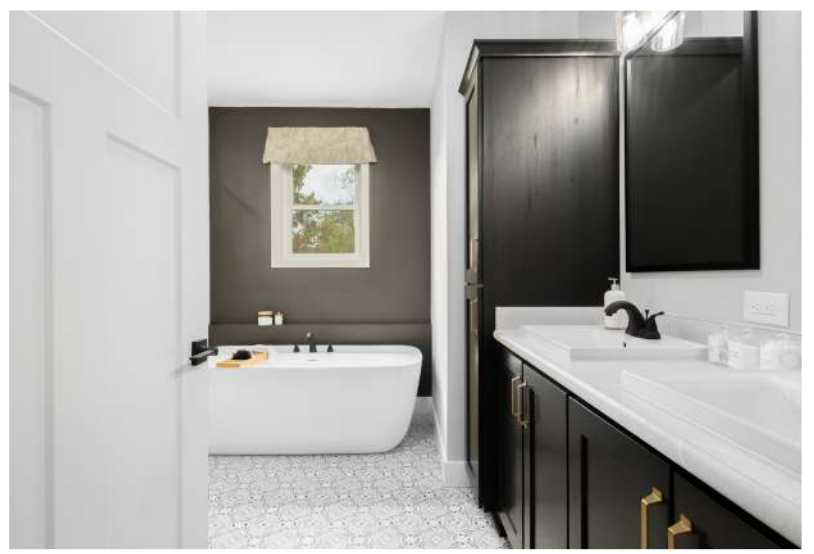
**2M3054-X**







Scan to Watch Video!



\*Please use pictures for floorplan vision only.  
Decors and materials used are constantly  
changed and improved.





Style: Ranch or Cape  
 Square Feet: 1943  
 Size: 4164/60  
 Bedrooms: 3  
 Bathrooms: 2

Optional Features:  
 - Window at Gable End  
 - Shake Siding Accent  
 - Window Lineals  
 - Upgraded Front Door

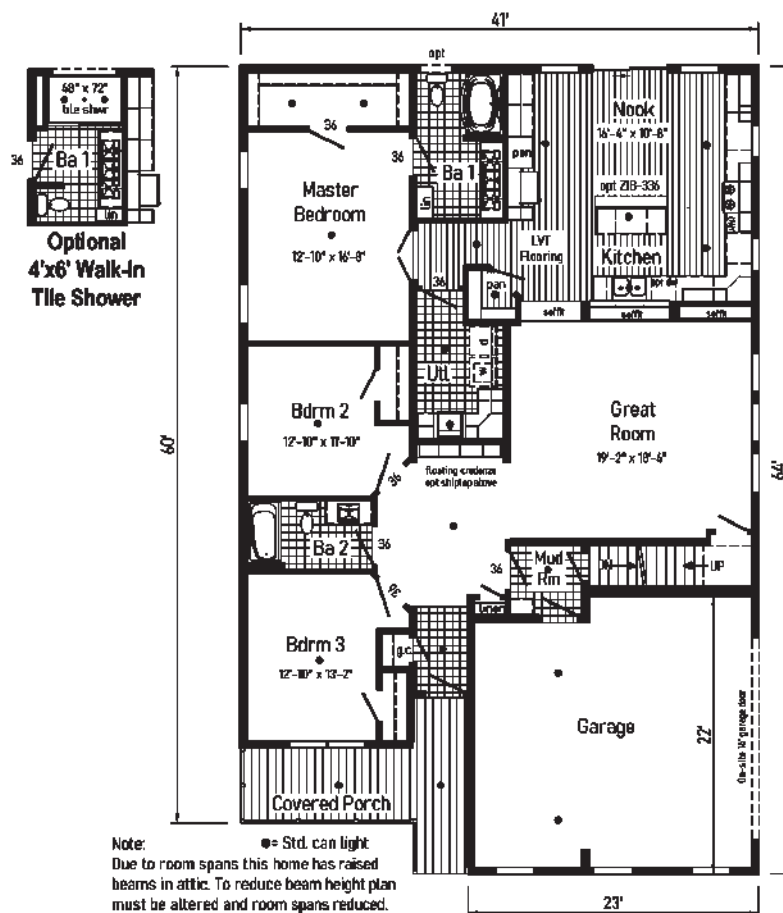
Features On-Site  
 by Others:  
 - Gutters &  
 Downspouts

# Leland

## 4M3001-R

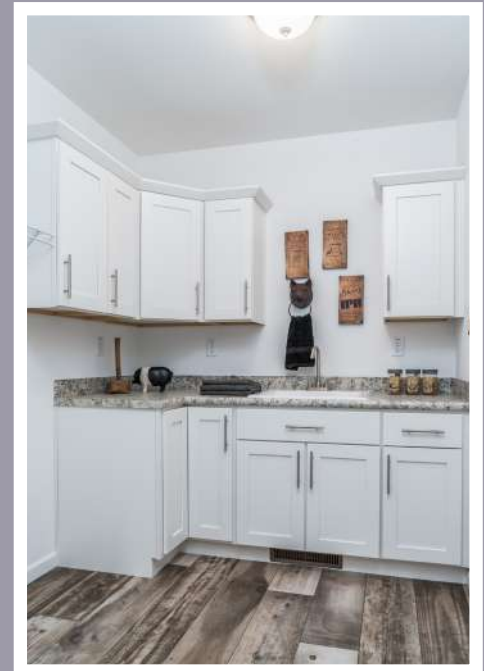
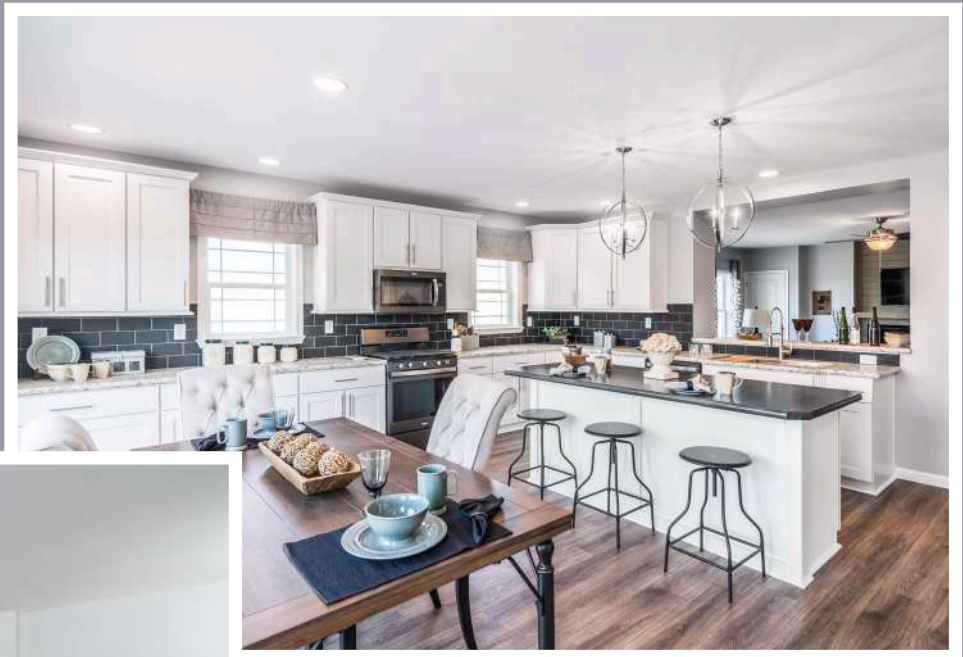
\*Note: Window grids shown are no longer available.

Some features shown on renderings may not be available or will have to be done on-site by others





Scan to Watch Video!

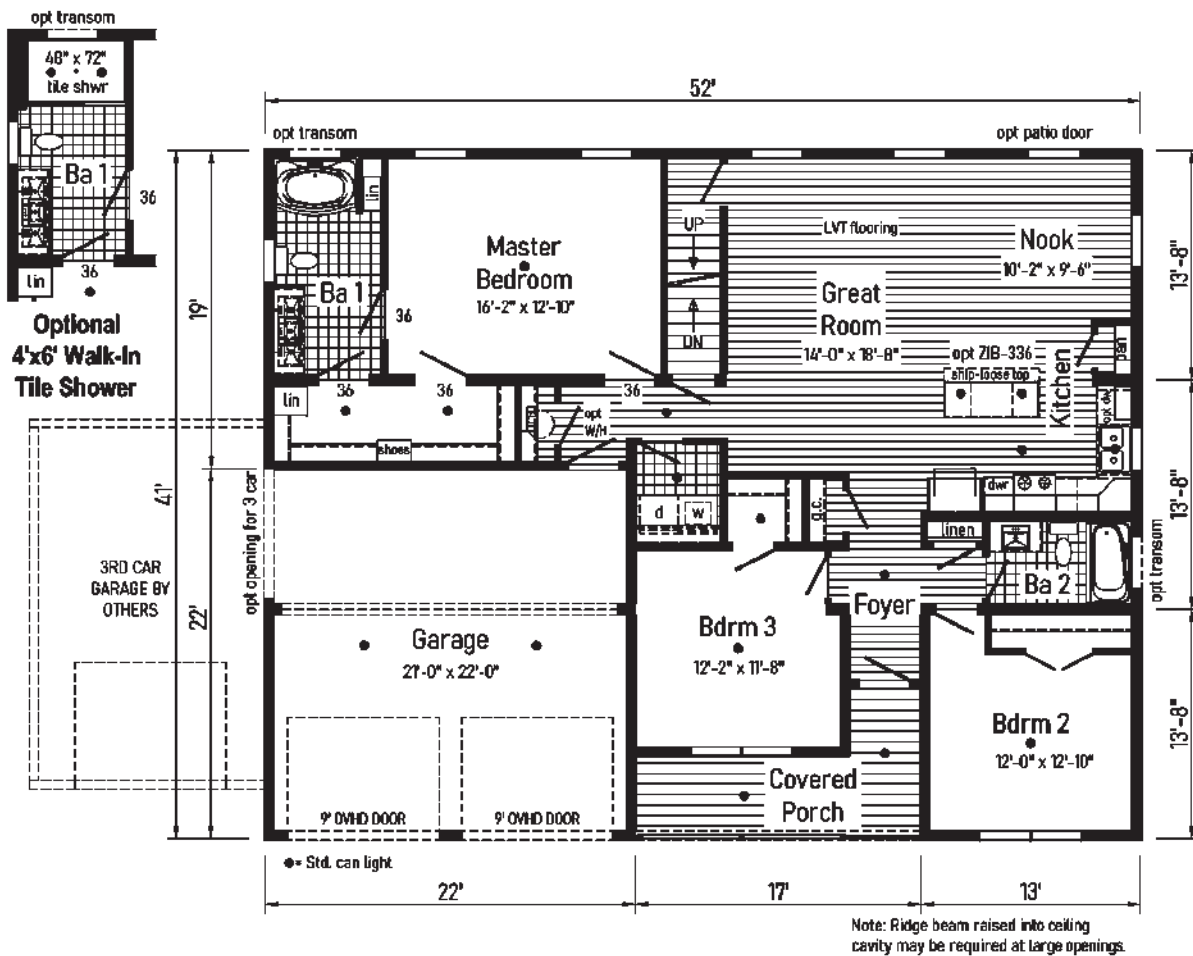


\*Please use pictures for floorplan vision only.  
Decors and materials used are constantly  
changed and improved.

# Garrison

## 4M3002-R

Style: Ranch or Cape  
 Square Feet: 1553  
 Size: 4252  
 Bedrooms: 3  
 Bathrooms: 2





Style: Ranch or Cape  
 Square Feet: 1684  
 Size: 4256  
 Bedrooms: 3  
 Bathrooms: 2

Optional Features:

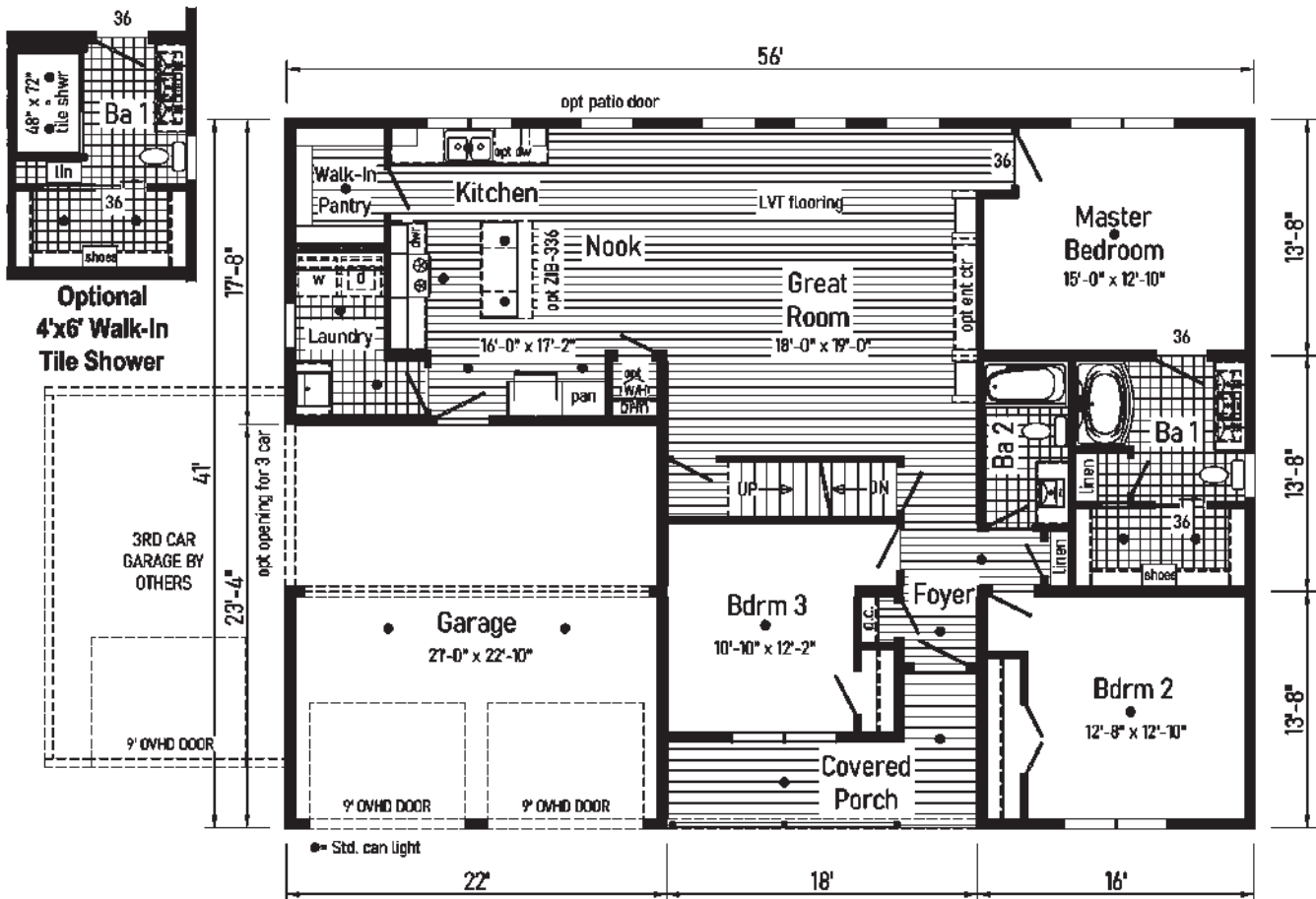
Features On-Site  
 by Others:



*Prestwick*

**4M3003-R**

Some features shown on renderings may not be available or will have to be done on-site by others



Note: Ridge beam raised into ceiling cavity may be required at large openings.

[www.manorwoodhomes.com](http://www.manorwoodhomes.com)



Style: Ranch or Cape  
 Square Feet: 2078  
 Size: 3168  
 Bedrooms: 3  
 Bathrooms: 2

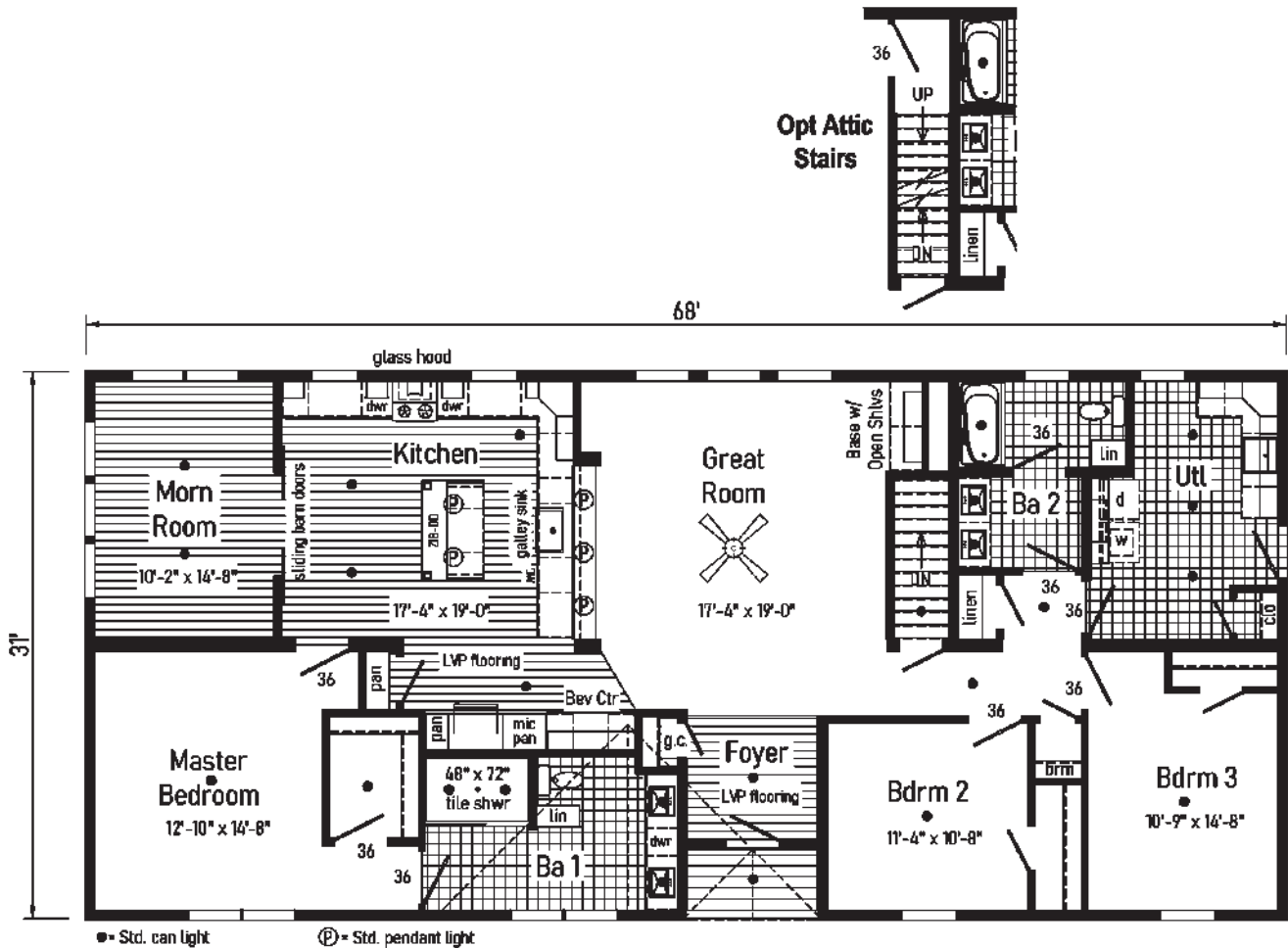
Optional Features:

Features On-Site  
 by Others:

# Gladiator

## 2M3050-X

Some features shown on renderings may not be available or will have to be done on-site by others





Style: Cape  
 Square Feet: 1144 - 1<sup>st</sup> Floor  
 518 - 2<sup>nd</sup> Floor  
 Size: 2644  
 Bedrooms: 3  
 Bathrooms: 3

Optional Features:

- Market Square Siding
- Window Grids
- Upgraded Front Door

Features On-Site  
 by Others:

- Porch
- Stone Facade

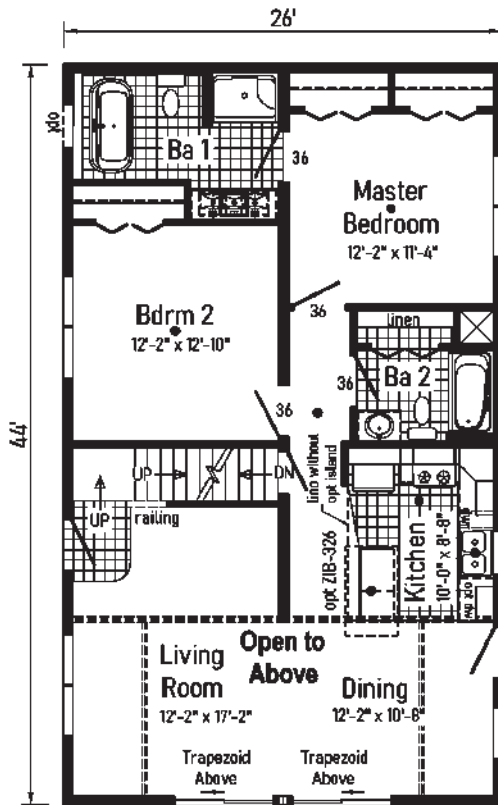


*Woodcliff*

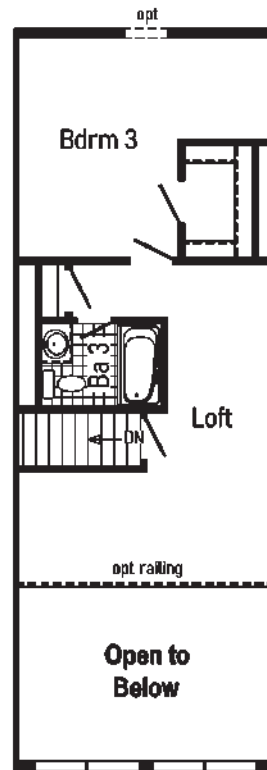
**2MC3002-N**

\*Note: Quarter round chalet windows no longer available.

Some features shown on renderings may not be available or will have to be done on-site by others



● = Std. can light



**Second Floor by Others**

Proposed Second Floor:  
 All design materials and work to be the responsibility of the builders on site to local codes. Light, vent, egress, heating and plumbing are the responsibility of the builder.





Style: Cape  
 Square Feet: 1312 - 1st Floor  
 830 - 2nd Floor  
 Size: 2848  
 Bedrooms: 5  
 Bathrooms: 3  
 Home Office

Optional Features:

- 6' Cape Dormers
- Shake Siding Accent
- Window Lineals
- Window Grids
- Upgraded Front Door

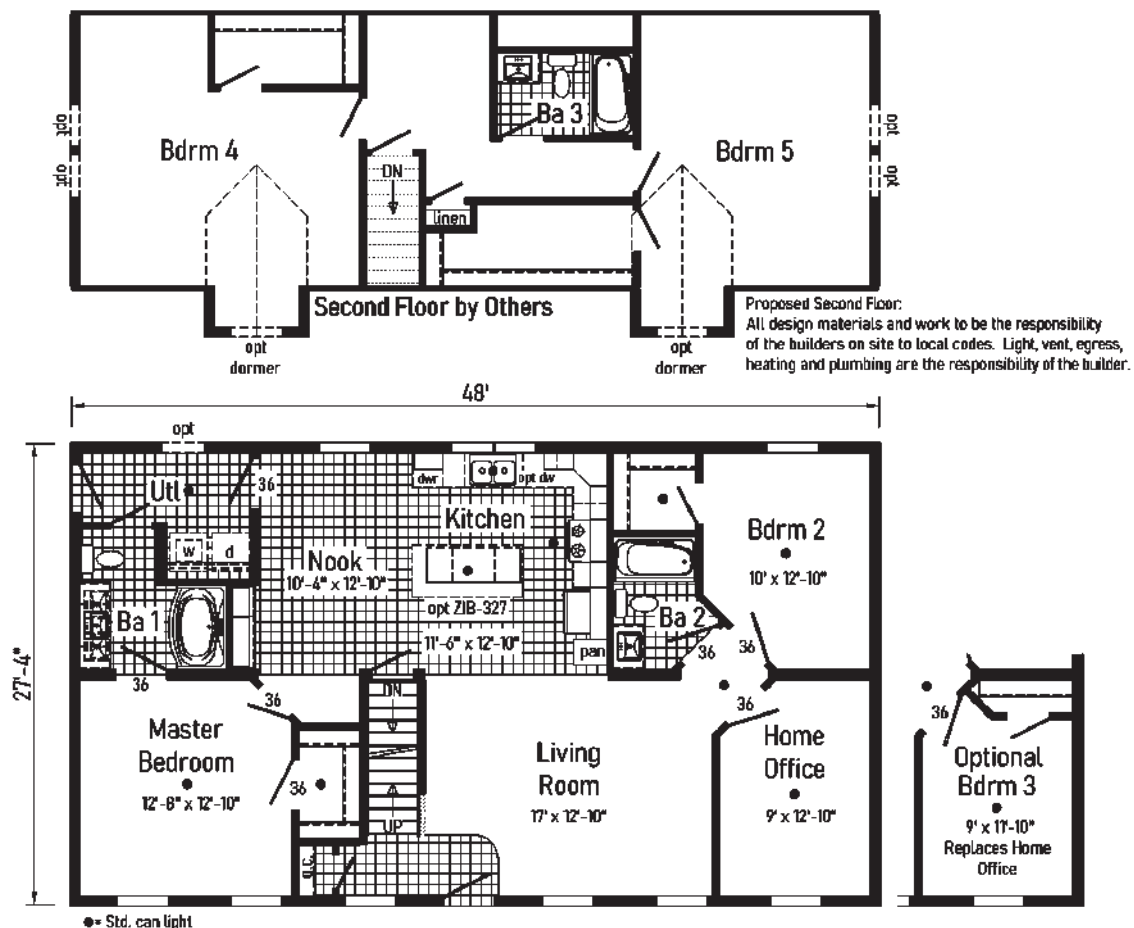
Features On-Site  
 by Others:

- Covered Porch
- Gutters and Downspouts

# Kensington

## 2MC3003-R

Some features shown on renderings may not be available or will have to be done on-site by others



Style: Cape  
 Square Feet: 1531 - 1<sup>st</sup> Floor  
 930 - 2<sup>nd</sup> Floor

Size: 2856  
 Bedrooms: 5  
 Bathrooms: 3

Optional Features:

- 6' Cape Dormers
- Window Grids
- Market Square Siding
- Shake Siding Accent
- Window in Gable End

Features On-Site

by Others:

- Covered Porch

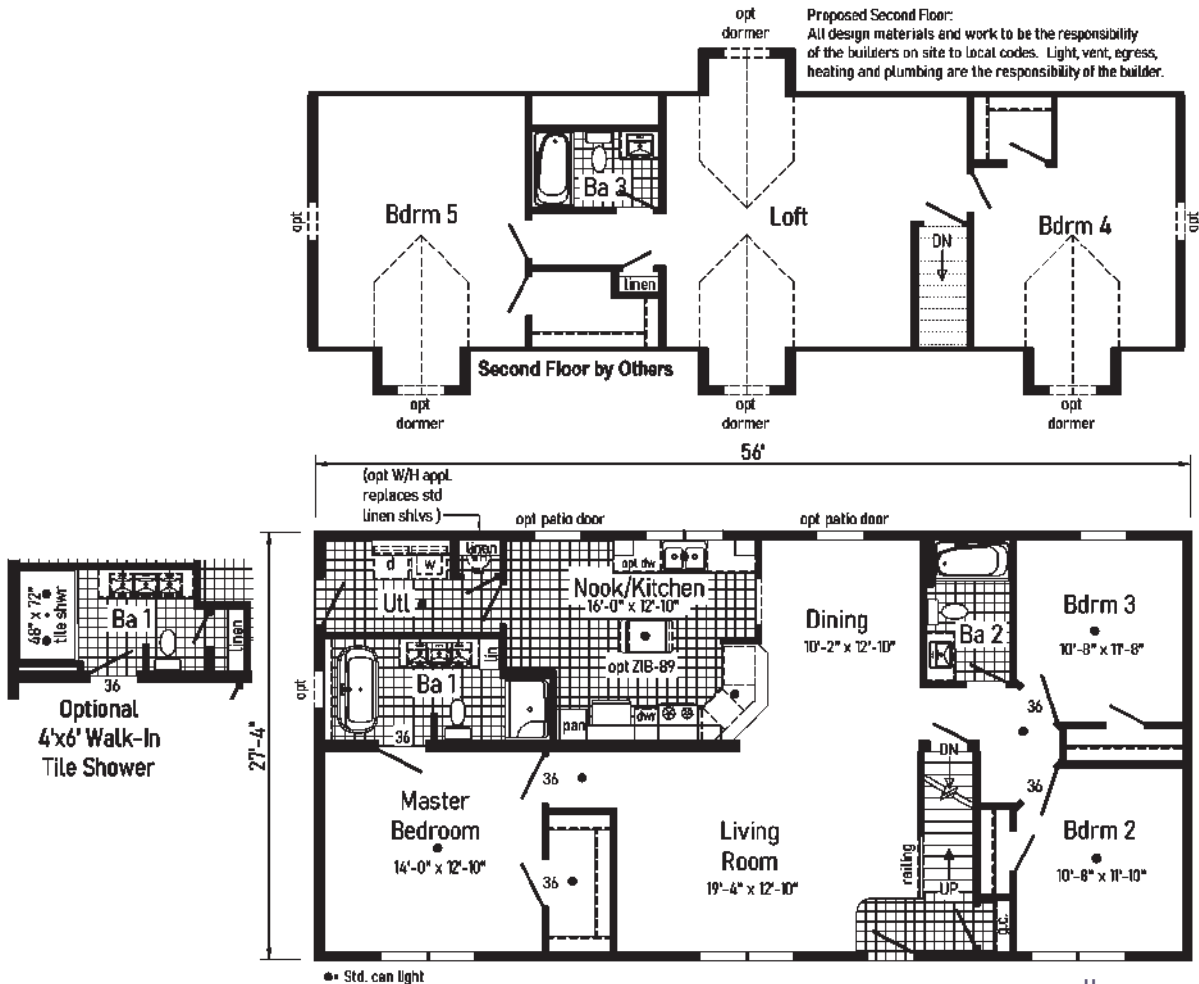
\*Note: Door N/A, See Options Brochure for Available Doors

Some features shown on renderings may not be available or will have to be done on-site by others



*Covington*

**2MC3004-R**







# Bellissimo 1

## 2M3401-R

Style: Ranch or Cape  
 Square Feet: 1559  
 Size: 2858  
 Bedrooms: 3  
 Bathrooms: 2

Optional Features:

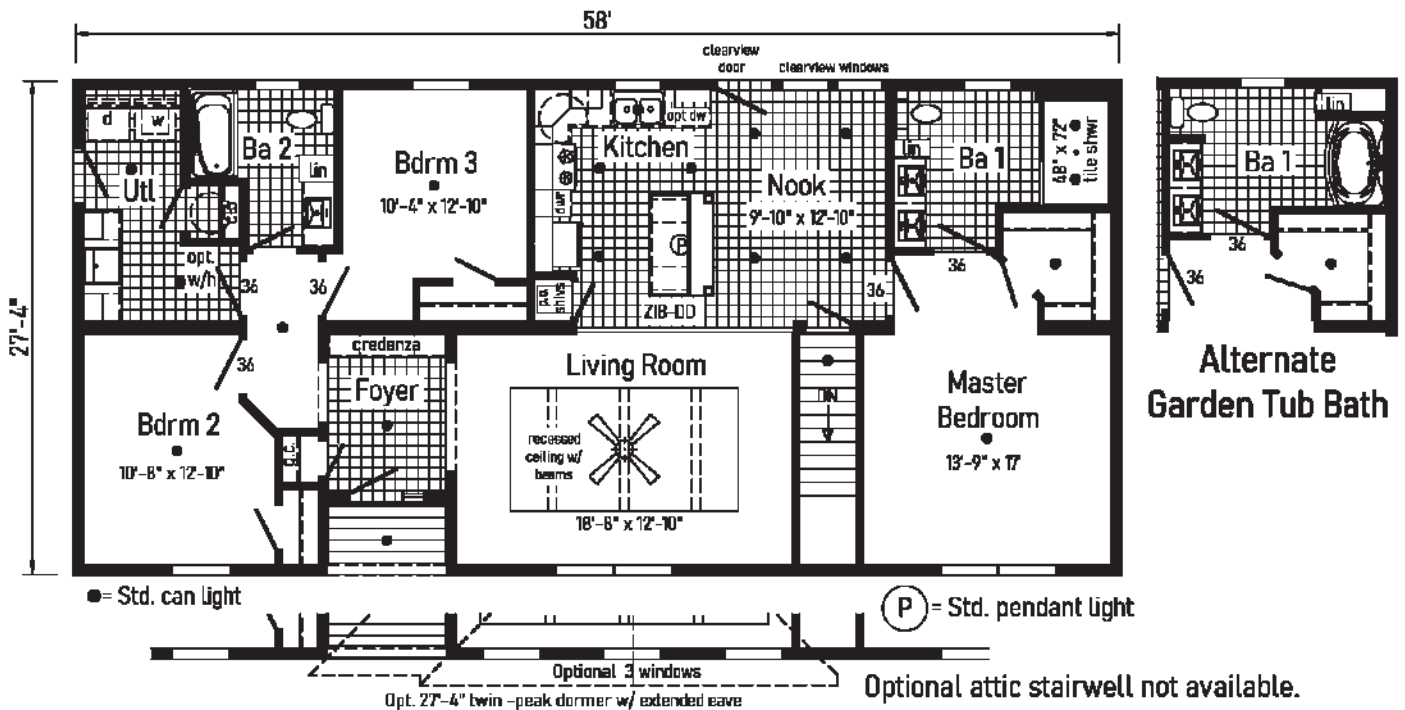
- 7/12 Roof
- 27'-4" Twin Peak Dormer with Full and Extended Eave
- Dutch Eaves
- Vertical Siding
- Shake Siding Accent
- Window Lineals
- Kick Plate
- Additional Windows

Features On-Site by Others:

- Garage
- Gutters & Downspouts

\*Note: Door N/A, See Options Brochure for Available Doors

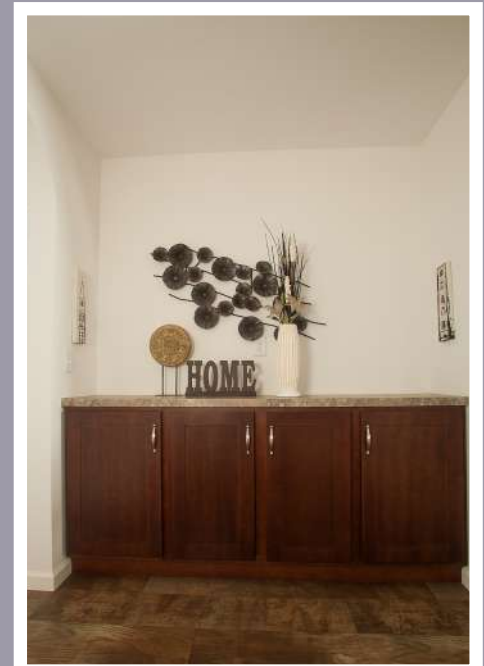
Some features shown on renderings may not be available or will have to be done on-site by others







Scan to Watch Video!



\*Please use pictures for floorplan vision only.  
Decors and materials used are constantly  
changed and improved.

# Cabinets & Hardware



**American Maple**  
Mission Flat Panel  
Stained



**Rustic Elm Oak**  
Mission Flat Panel  
Stained



**Shadow Grey**  
Mission Flat Panel  
Stained Oak



**White**  
Mission Flat Panel  
Painted Maple



ANSI/KCMA A161.1



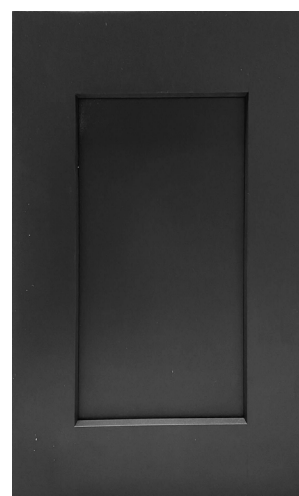
**Matte Black**



**Antique Silver**



**Brushed Gold**



**Black Onyx**  
Mission Flat Panel  
Painted Maple

## CLASSIC CRAFT CABINETRY.

A cornerstone of a good kitchen is the cabinetry. It should look good, perform over time, and adjust to your changing needs. Our Classic Craft KCMA-certified cabinets are strong, good-looking, and built to last.

All of our cabinets are built to the rigorous Kitchen Cabinet Manufacturers Association, and must pass the same testing as Merillat, Marsh, Aristokraft, and the best store-purchased cabinets. If your kitchen is important to you, then why would you want an inferior cabinet?

Simply put, our cabinets are heavier, stronger, and squarer. Our cabinets need to pass many tests, including:

- Overhead cabinets rated to over 500 pounds capacity;
- Drawers opened 25,000 times - and with weight;
- Cabinet doors opened 25,000 times;
- Harsh testing of cabinet finishes.
- Our cabinets are regularly (and randomly) tested by authorized third-parties.

In addition, our KCMA Certified cabinets offer the following:

- 3/4" Adjustable Shelves with Finished Edges in Overhead Kitchen Cabinets
- Hidden Hinges on all Cabinets
- 3/4" Adjustable Half-Shelf in Kitchen Base Cabinet
- Recessed Toe-Kick for Ease of Working at Cabinet
- Precision-Cut and Dadoed Cabinet Components

Through on-going tests performed by an experienced, independent laboratory, the KCMA certification program assures you that any cabinet bearing the blue and white KCMA seal complies with the rigorous standards set by the American National Standards Institute (ANSI) and KCMA. For more details on KCMA certification, visit: [www.kcma.org](http://www.kcma.org).



Style: Ranch or Cape  
 Square Feet: 1709  
 Size: 2864  
 Bedrooms: 3  
 Bathrooms: 2  
 Home Office

Optional Features:

- 7/12 Roof
- 27'-4" Twin Peak Dormer with Full and Extended Eaves
- Vertical Siding
- Shake Siding Accent
- Upgraded Front Door

Features On-Site by Others:

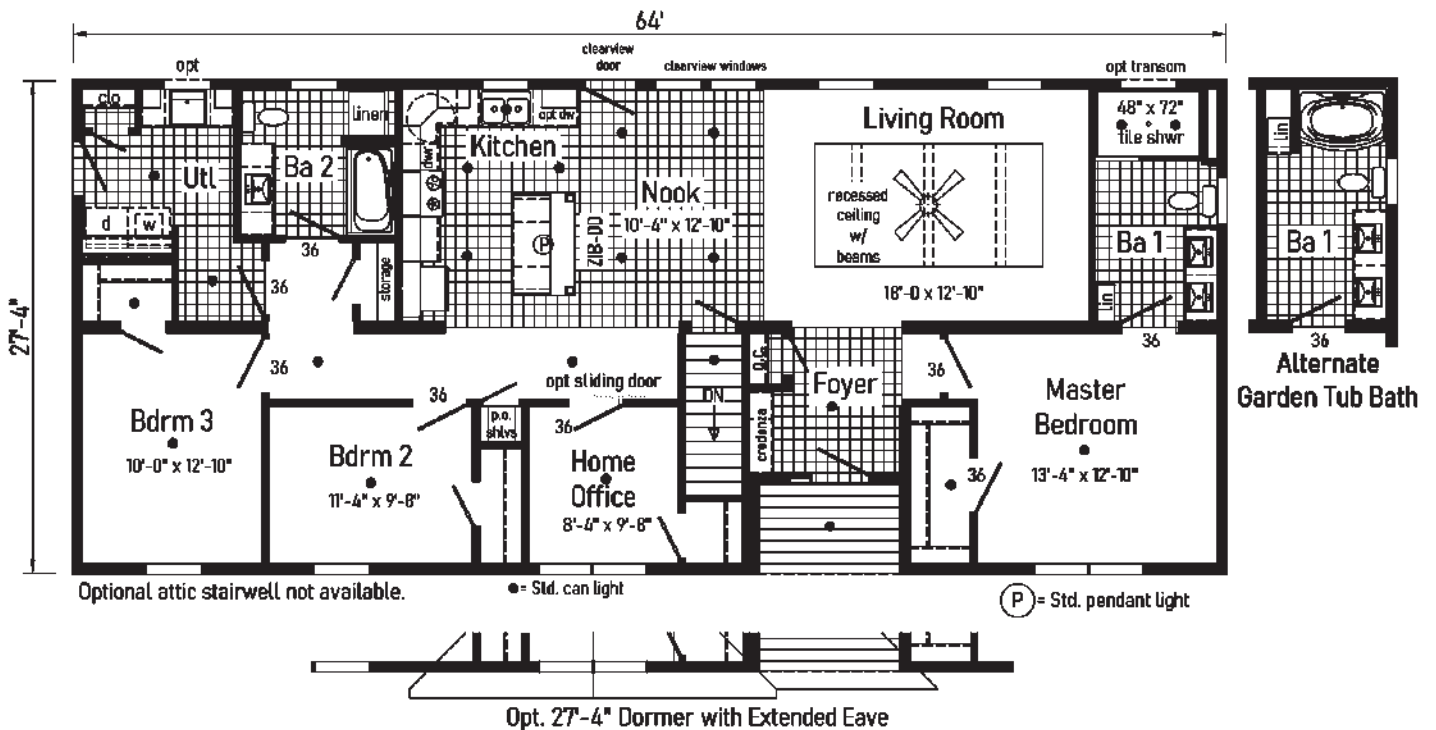
- Garage
- Gutters & Downspouts

Some features shown on renderings may not be available or will have to be done on-site by others



# Bellissima 2

## 2M3402-R





Style: 2-Story  
 Square Feet: 1560  
 Size: 2630  
 Bedrooms: 3  
 Bathrooms: 2.5

Optional Features:

- Twin Peak Dormer with Bumpout
- Dutch Eaves
- Full Eave Return
- Shake Siding Accent
- Window Grids
- Upgraded Front Door
- Sidelite
- Octagon Window N/A

Features On-Site by Others:

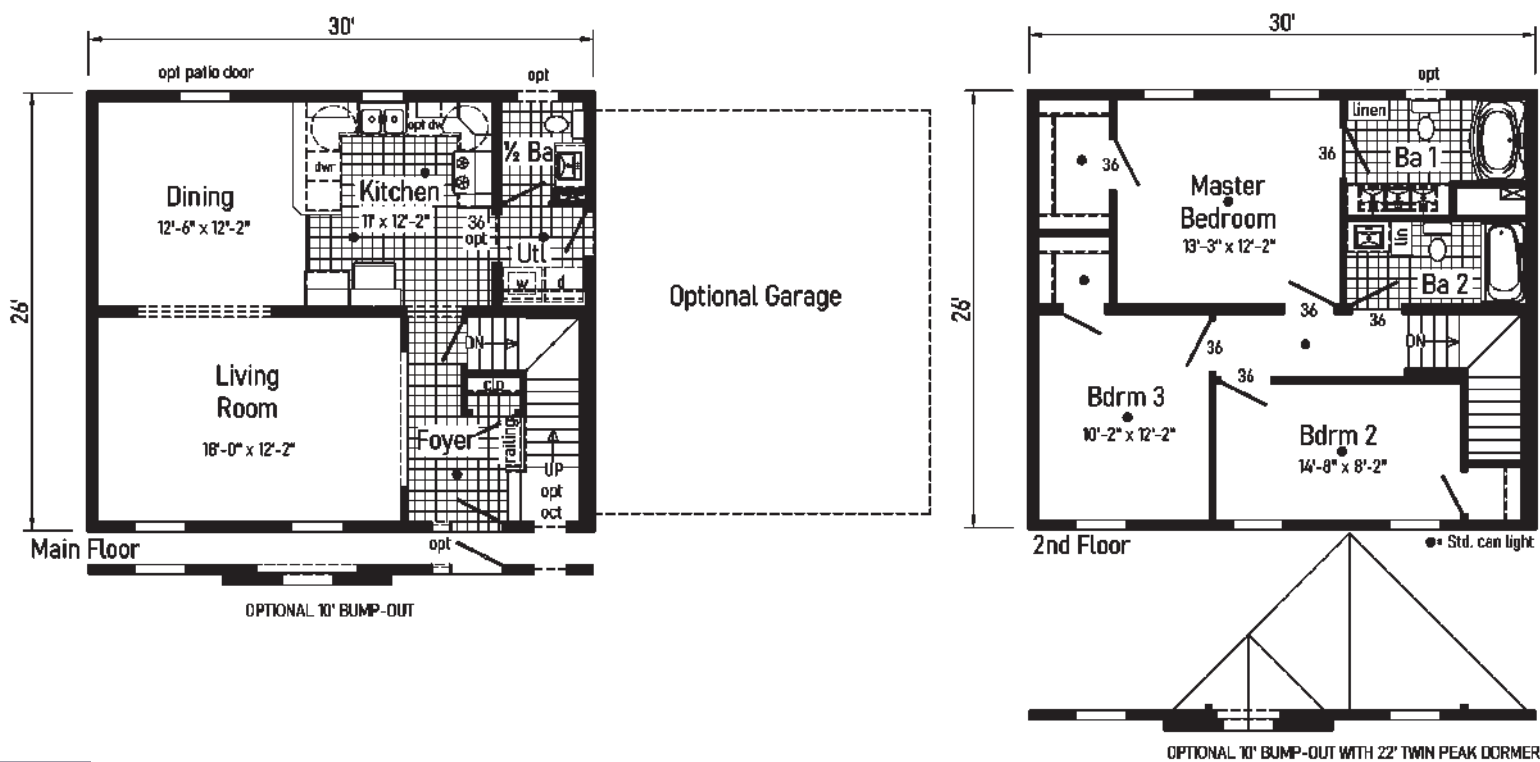
- Stone Facade
- Garage
- Covered Front Porch
- Gutters and Downspouts

Some features shown on renderings may not be available or will have to be done on-site by others



# Marquette

## 6M3001-N



Style: 2-Story  
 Square Feet: 2186  
 Size: 2840  
 Bedrooms: 3  
 Bathrooms: 2.5  
 Home Office

Optional Features:

- 7/12 Roof
- Full Continuous Eaves
- Vertical Siding
- Window Lineals
- Upgraded Front Door
- Sidelite

Features On-Site by Others:

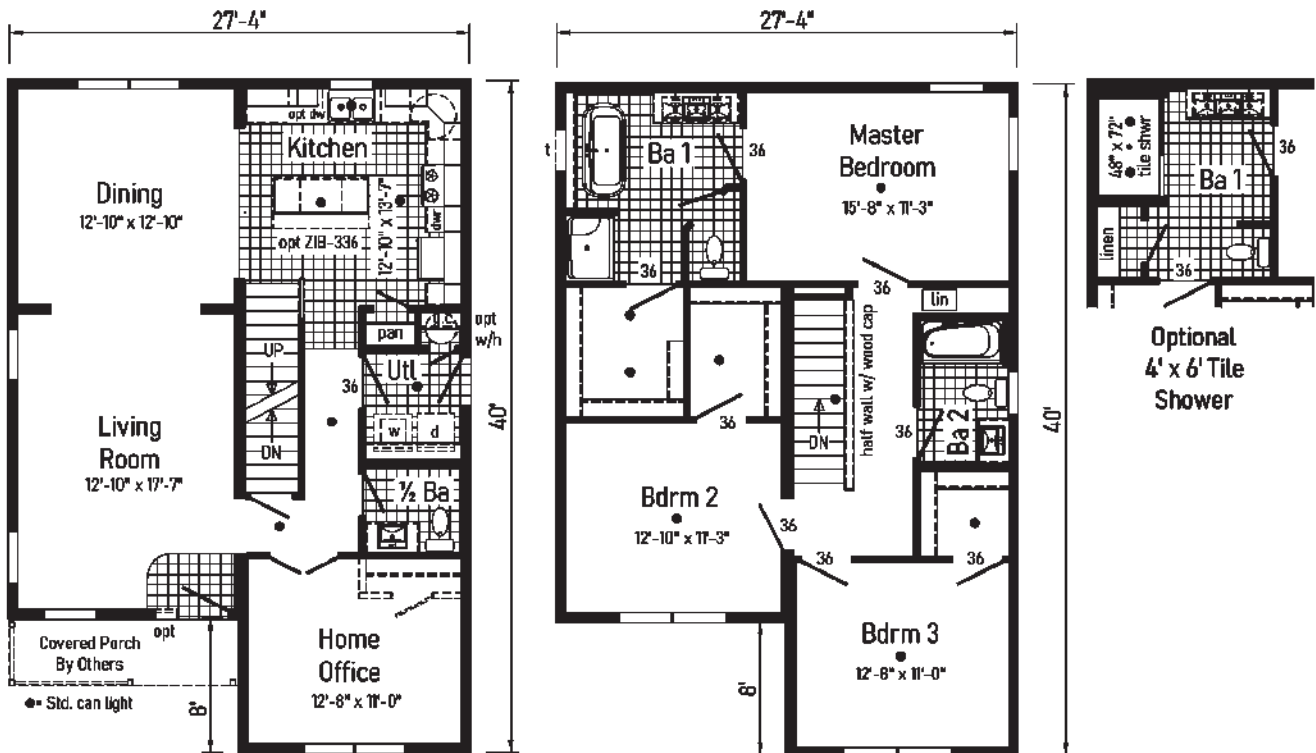
- Brick Facade
- Garage
- Covered Front Porch
- Gutters and Downspouts

Some features shown on renderings may not be available or will have to be done on-site by others



# Burlington

## 6M3018-R







Style: 2-Story  
 Square Feet: 2624  
 Size: 2844  
 Bedrooms: 4  
 Bathrooms: 2.5

Optional Features:

- Flush Dormer
- Upgraded Front Door
- Window Lineals
- Shake Siding

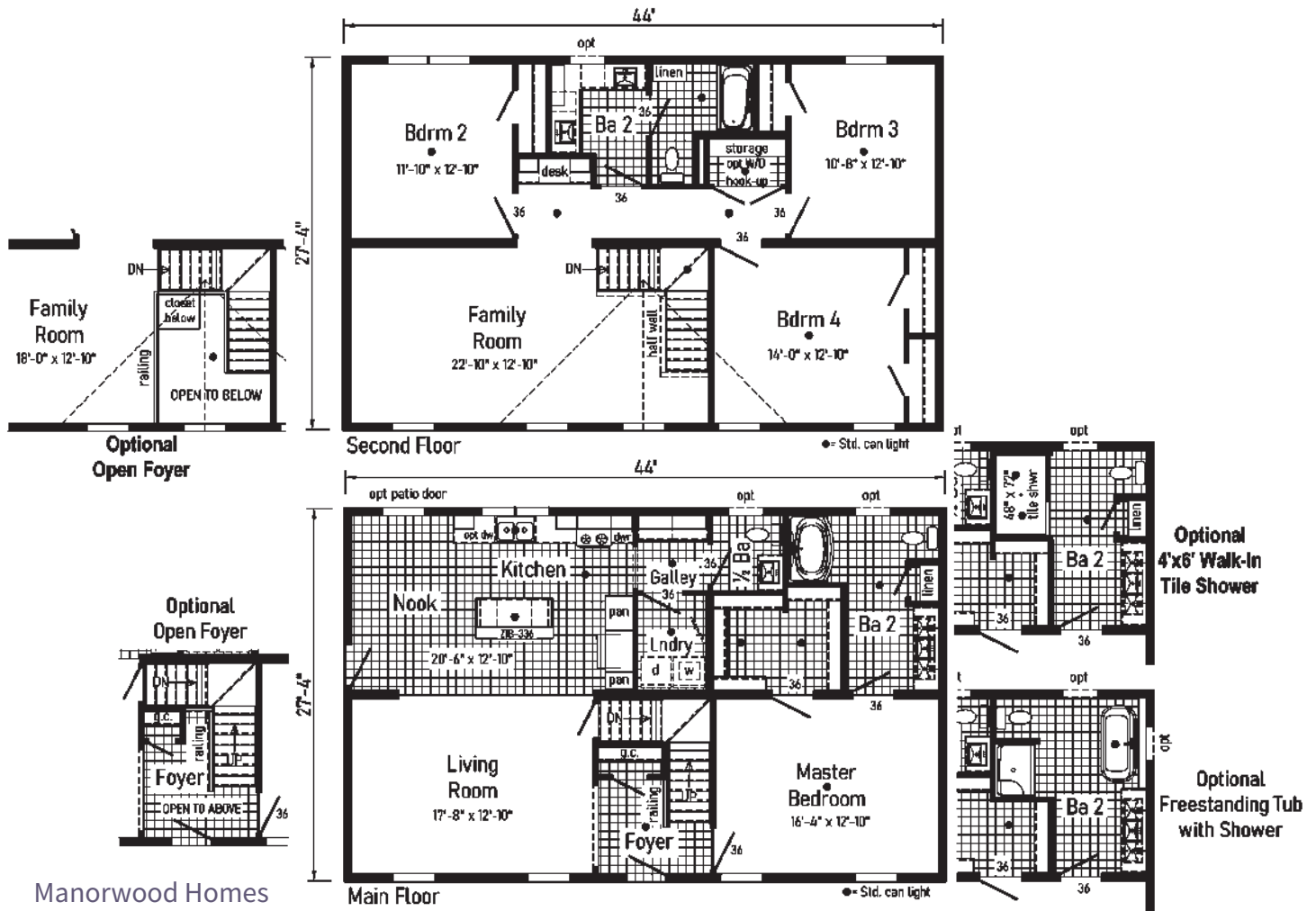
Features On-Site  
 by Others:

- Garage
- Covered Front Porch

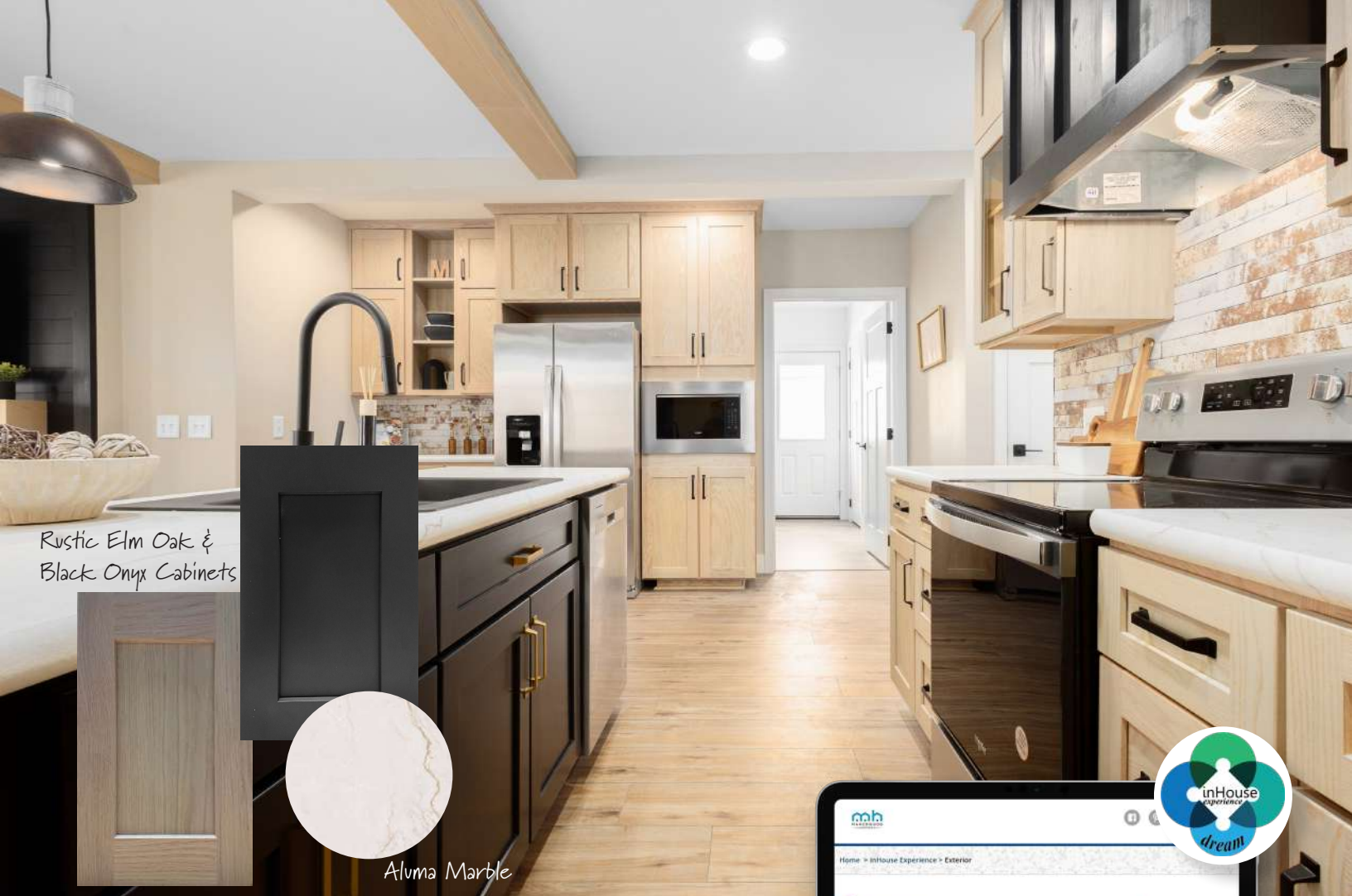
# Paramont

## 6M3026-R

Some features shown on renderings may not be available or will have to be done on-site by others







Rustic Elm Oak &  
Black Onyx Cabinets

Aluma Marble



## Customize Your Dream Home!



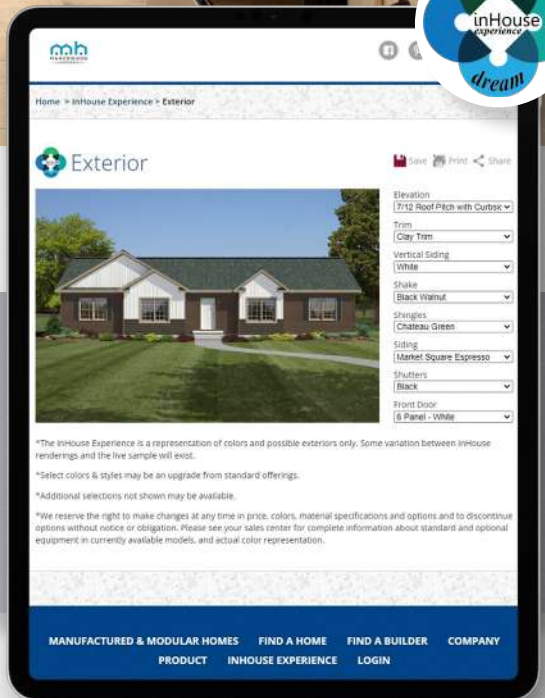
EXTERIOR



BATH



KITCHEN



Customize your dream home colors to see what your house could look like. The exterior InHouse experience allows you to select a Roof Pitch with a Dormer, Siding Color, Shingle Color, Trim Color, Shake Siding, Vertical Siding to get an idea for what your home could look like with the color scheme you have selected.

The InHouse experience gives you the opportunity to design your dream Bathroom or Kitchen. Selections range from your countertop colors, cabinet colors, vinyl floor color, appliances, even down to your kitchen sink!



[www.manorwoodhomes.com/inhouse-experience](http://www.manorwoodhomes.com/inhouse-experience)

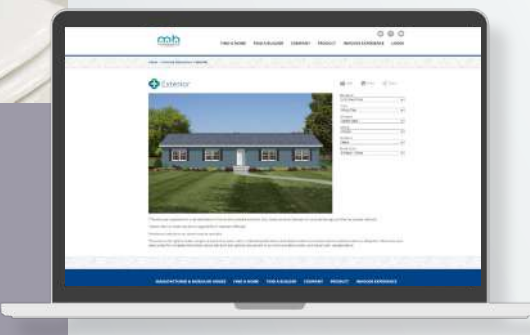
[www.manorwoodhomes.com](http://www.manorwoodhomes.com)



A **CAVCO** COMPANY

State Route 38  
Emlenton, PA 16373  
724-867-0189  
www.manorwoodhomes.com

Connect with Us!



*Design your dream home!*

Our inHouse Experience allows you to customize your dream home. All color choices are available to help you decide on your design style and create your dream home! Visit our website today to give it a try!

[www.manorwoodhomes.com/experience](http://www.manorwoodhomes.com/experience)

