

# The Otter Creek

3 Bedroom

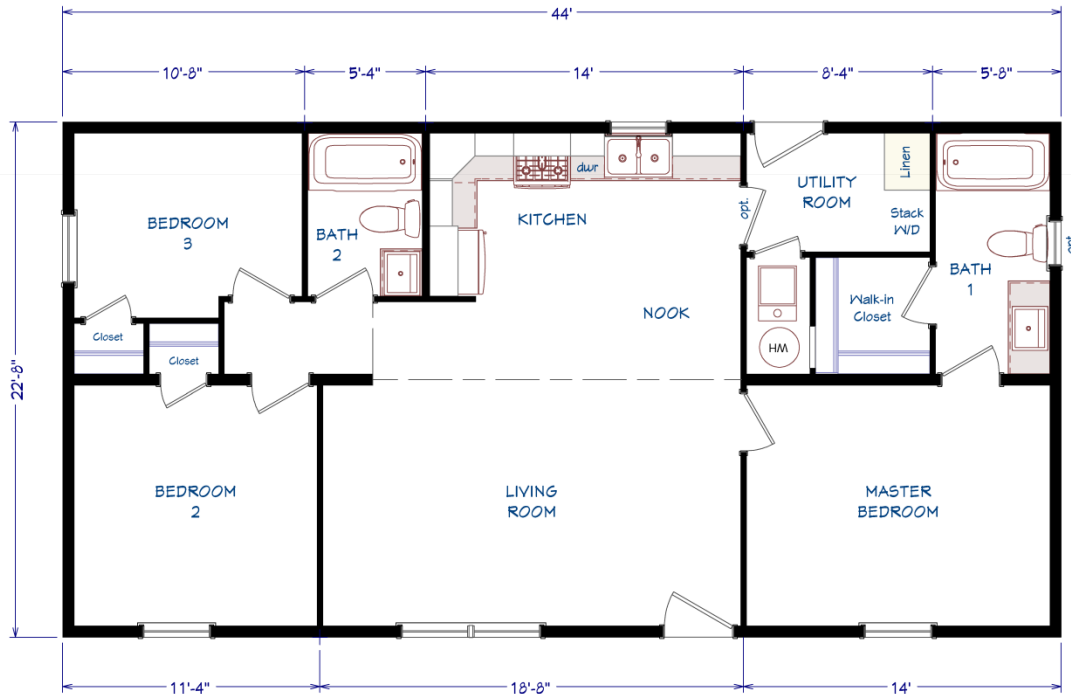
2 Bath

24 x 48 (44) / 997 s.f.



[www.GoVillageHomes.com](http://www.GoVillageHomes.com)

1083 US Route 2, Berlin, VT 05602-8245  
(802) 229-1592



**Construction:**  
Double-Wide / Multi-Section  
Manufactured Home

**Color:**  
Driftwood / Pewter

*Our Pricing includes Delivery, Installation, Sewer & Water Hook-Up, and Tax (if applicable)  
[Please see an Installation Guide & Home Consultant for details]*

## Upgrades

- Energy Star (Xtra Air Sealing & Insulation, 95% Eff Gas Furnace)
- Ice & Water Shield in Roof
- Shutters on Side/Rear Windows
- 3-Lite Craftsman Fiberglass Front Exterior Door
- Half Glass Fiberglass Rear Exterior Door
- 24x36 Vinyl Window in Master Bath
- Exterior Water Faucet
- 40 Gallon Water Heater
- Interior Water Shut-Off Valves Where Accessible
- In-House Main Water Line Shut-Off in Utility Room
- Perimeter Heat Ducts & Registers
- Interior Door with Return Air Vent at Utility Room
- Kitchen Faucet with Side Sprayer
- Whirlpool Appliances, including Energy Star Dishwasher, Over the Range Microwave
- Plug Also for Electric Range
- (2) Extra LED Recessed Lights in Kitchen
- LED Recessed Light in all Bedroom
- Vinyl Foyer at Front Door Entry
- 1-Piece Fiberglass Tub/Shower in Master Bath
- 1-Piece Fiberglass Tub/Shower in Bath 2
- China Sinks in Bathrooms
- (2) TV Jacks
- 200 AMP Panel Box



# Installation Guide

Our Pricing includes DELIVERY, INSTALLATION and TAX (if applicable)

## DOUBLE-WIDE & SINGLE-WIDE Home Installations Include:

## VILLAGE HOMES

SET, LEVEL & LAG HOME TOGETHER (DW)	✓	
SEAL MATE LINE / WALLS WITH EXPANSION FOAM	✓	
FINISH ROOFING	✓	
FINISH SIDING	✓	
HANG ALL INTERIOR DOORS / FINISH MATE WALL	✓	
SEAM CARPETS & FINISH FLOORING	✓	
<b>INSTALL WATER LINE &amp; HEAT TAPE TO SOURCE IN SLAB</b> Line into Slab by Others	✓	
<b>INSTALL SEWER LINE(S) TO DRAIN(S) IN SLAB</b> Line into Slab by Others	✓	
INSTALL ANCHORS / TIE DOWNS	✓	
<b>INSTALL PREMIUM WHITE VINYL SKIRTING</b> Rapid Wall & R-Cotec Insulated Products - Optional	✓	
INSTALL (2) SETS OF FIBERGLASS STEPS W/ RAILING	✓	
CLEAN HOME (Damp Wipe Surfaces, Broom & Vacuum)	✓	
REMOVE TRASH	✓	
REMOVE AXLES & TIRES	✓	
MANUFACTURERS WARRANTY (New Homes)	✓	
7-10 YEAR LIMITED STRUCTURAL WARRANTY (New Homes)	✓	
HEATING / COOKING FUEL TANK(S) & INSTALLATION Buyer's Fuel Provider is Responsible for Tanks, Connections, Conversion to LP and Diagnostics	Customer	
CONNECT ELECTRICAL WIRE IN SLAB TO ELECTRICAL PANEL	Optional	
EXCAVATION / SLAB PREP / DRIVEWAY / GRADING / SEED & MULCH	Optional	
CONCRETE SLAB / FOUNDTION	Optional	
POLE / PEDISTAL / METER / DISCONNECT / CONDUIT / WIRE	Optional	
WELL / CONNECT TO MUNICIPAL WATER (including line into slab) Pressure Tank & Switch may be Required for Wells	Optional	
SEPTIC SYSTEM / CONNECT TO MUNICIPAL SEWER (including line into slab)	Optional	
GARAGE / DECK / PORCH	Optional	

1083 US Route 2, Berlin, VT 05602 | (802) 229-1592 | sales@Village-Homes.com

**Vermont & New Hampshire's MOST TRUSTED builder  
of Modular & Manufactured Homes**