

The Birchview

2 Bedroom

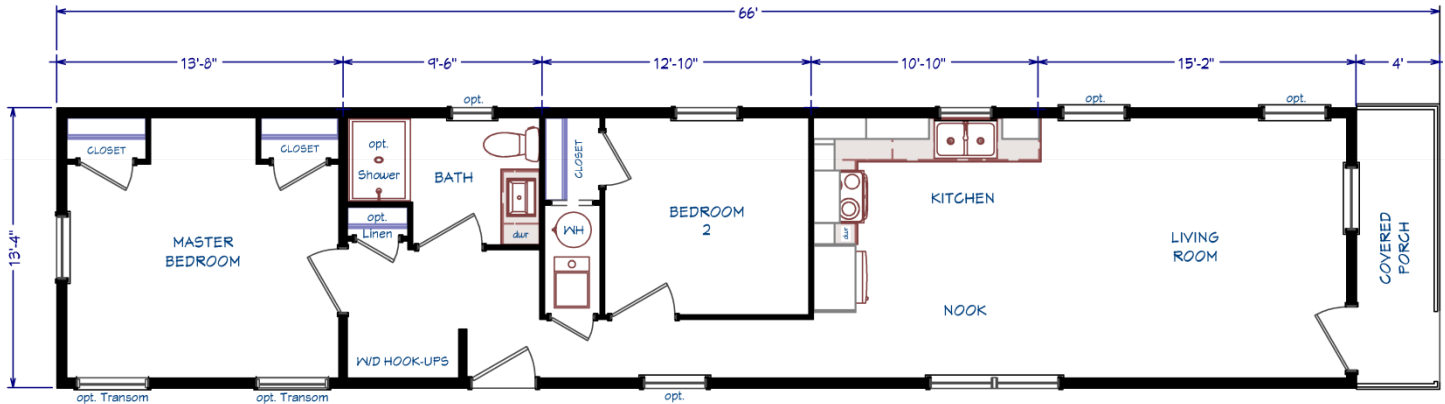
1 Bath

14 x 70 (66) / 880 s.f.



www.VillageHomes.com

1083 US Route 2, Berlin, VT
(802) 229-1592



*Our Pricing includes Delivery,
Installation, Sewer & Water Hook-Up,
and Tax (if applicable)*

*[Please see a Home Consultant
& Installation Guide for details]*

Construction:

Single-Wide / Single-Section
Manufactured Home

Color: Greystone / White

Upgrades

- Energy Star (Xtra Air Sealing & Insulation, 95% Eff Gas Furnace)
- R-38 Blown Cellulose Ceiling Insulation
- 6' Stretch (1' in M. Bdrm, 1' in Bath, 2' in Bdrm, 2' in LR)
- 16" O.C. Floor Joists & 16" O.C. Roof Trusses
- Ice & Water Shield in Roof / Weather Wrap over Ext. Sheathing
- 30 Year Architectural Shingles
- 36" 3-Lite Craftsman Fiberglass Front Exterior Door
- 36" Half Glass Fiberglass Rear Exterior Door
- 36" Storm Door for Rear Exterior Door
- (2) Extra Full Size Vinyl Windows in Living Room
- (2) Extra 24x36 Vinyl Windows in Master Bath & Hallway
- (2) Extra Transom Windows in Master Bedroom
- 3-1/2" Exterior Lineals Around All Windows
- 50 Gallon Water Heater
- Interior Water Shut-Off Valves Where Accessible
- In-house Main Water Line Shut-Off
- (2) Exterior Water Faucets
- Extra Exterior GFI Receptacle (Makes 3 Total)
- Perimeter Heat Ducts & Registers
- Plumb for Future Icemaker
- Prep Also for Gas Appliances (Range, Dryer)
- Finished Drywall Throughout w/ OSB Ext. Sheathing
- Smooth Finish Ceiling
- White Craftsman Molding with Baseboard
- White Wood Window Sills Throughout
- Stained Hardwood Oak Cabinet Doors & Stiles
- Drawers over Doors in Kitchen Base Cabinets
- Surround Panels & Cabinet w/ Doors over Refrigerator
- Crescent Edge Countertops Throughout
- Upgraded 25oz Carpet in Master Bedroom
- 36" Interior Passage Doors
- 2" PVC Window Blinds Throughout
- Linen Closet in Hallway by Washer/Dryer Area
- Wire Shelf over Washer/Dryer Space
- Hi-Rise Kitchen Faucet with Side Sprayer
- China Sink w/ Metal Faucet in Bathroom
- 48" Fiberglass Shower Units in Bathroom
- Raised Height Toilet & Medicine Cabinet in Bathroom
- (6) Extra LED Recessed Lights in Kitchen
- Ceiling Fan with LED Light in Living Room
- Ceiling Lights in Bedrooms
- (3) TV Jacks / Phone Jack

Village Homes has tried to ensure that our printed materials for all of our homes are comprehensive and factual. We reserve the right, however, to make changes without notice in pricing, options added, specifications, materials, etc. Due to continuous product development and improvements, your home may differ in manufacturing, color and options available at the time of construction. Specifications, dimensions and measurements on printed materials are approximates based on in-house design and/or engineering drawings. Any included images are artist renderings and not intended to be an accurate representation of the home. Renderings and floor plans may be shown with optional features or third party additions.

Rev. 11/14



Installation Guide

Our Pricing includes DELIVERY, INSTALLATION and TAX (if applicable)

DOUBLE-WIDE & SINGLE-WIDE Home Installations Include:

VILLAGE HOMES

SET, LEVEL & LAG HOME TOGETHER (DW)	✓	
SEAL MATE LINE / WALLS WITH EXPANSION FOAM	✓	
FINISH ROOFING	✓	
FINISH SIDING	✓	
HANG ALL INTERIOR DOORS / FINISH MATE WALL	✓	
SEAM CARPETS & FINISH FLOORING	✓	
INSTALL WATER LINE & HEAT TAPE TO SOURCE IN SLAB Line into Slab by Others	✓	
INSTALL SEWER LINE(S) TO DRAIN(S) IN SLAB Line into Slab by Others	✓	
INSTALL ANCHORS / TIE DOWNS	✓	
INSTALL PREMIUM WHITE VINYL SKIRTING Insulated Products - Optional	✓	
INSTALL (2) SETS OF FIBERGLASS STEPS W/ RAILING	✓	
CLEAN HOME (Damp Wipe Surfaces, Broom & Vacuum)	✓	
REMOVE TRASH	✓	
REMOVE AXLES & TIRES	✓	
MANUFACTURERS WARRANTY (New Homes)	✓	
7-10 YEAR LIMITED STRUCTURAL WARRANTY (New Homes)	✓	
HEATING / COOKING FUEL TANK(S) & INSTALLATION Buyer's Fuel Provider is Responsible for Tanks, Connections, Conversion to LP and Diagnostics	<i>Customer</i>	
CONNECT ELECTRICAL WIRE IN SLAB TO ELECTRICAL PANEL	<i>Optional</i>	
EXCAVATION / SLAB PREP / DRIVEWAY / GRADING / SEED & MULCH	<i>Optional</i>	
CONCRETE SLAB / FOUNDATION	<i>Optional</i>	
POLE / PEDISTAL / METER / DISCONNECT / CONDUIT / WIRE	<i>Optional</i>	
WELL / CONNECT TO MUNICIPAL WATER (including line into slab) Pressure Tank & Switch may be Required for Wells	<i>Optional</i>	
SEPTIC SYSTEM / CONNECT TO MUNICIPAL SEWER (including line into slab)	<i>Optional</i>	
GARAGE / DECK / PORCH	<i>Optional</i>	

1083 US Route 2, Berlin, VT 05602 | (802) 229-1592 | sales@VillageHomes.com

**Vermont & New Hampshire's MOST TRUSTED builder
of Modular & Manufactured Homes**