

The Fairfield

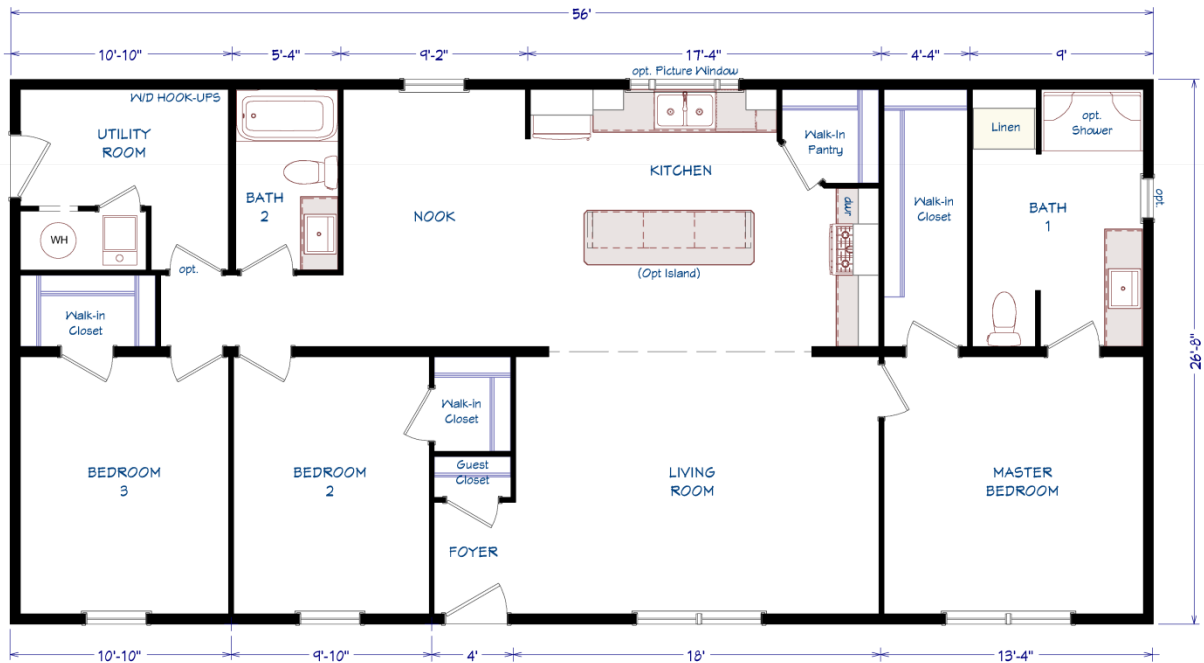
3 Bedroom

2 Bath

28 x 60 (56) / 1,493 s.f.



1083 US Route 2, Berlin, VT
(802) 229-1592



Construction:
Double-Wide / Multi-Section
Manufactured Home

Color:
Spruce / Clay

Featuring 10" Eave Overhangs

Our Pricing includes Delivery, Installation, Sewer & Water Hook-Up, and Tax (if applicable)

[Please see an Installation Guide & Home Consultant for details]

Upgrades

- Energy Star (Extra Air Sealing & Insulation, 95% Eff Gas Furnace)
- Ice & Water Shield in Roof
- Twin Peak Dormer w/ Box Bay Bump Out & Vinyl Shake Accent
- Upgraded Market Square Spruce Siding
- 24x36 Window in Master Bath
- Picture Window at Kitchen Sink
- 3-1/2" Clay Exterior Lineal Trim Around All Windows
- Clay Exterior Package, including Vintage Half View Front Door, Half Glass Rear Door, Windows, Coordinating Fascia & Soffits, Gatsby Exterior Lights.
- Exterior Faucet / 40 Gal. Water Heater / Perimeter Heat Ducts
- Interior Water Shut-Offs Where Accessible
- Main Water Shut-Off in Utility
- Vinyl Foyer at Front Door Entry
- Whirlpool Appliances, including Energy Star Dishwasher, Over the Range Microwave & Plug for Elec. Range
- Hardwood Painted Oak Cabinetry Throughout
- Large 8 ft. Kitchen Island w/ Three Globe Pendant Lights
- Overhead Cabinet w/ Doors over Refrigerator
- Black Stainless Steel Farmer Sink in Kitchen
- 36x60 Fiberglass Shower w/seats in Master Bath
- 30x60 Fiberglass Tub/Shower in Bath 2
- China Sinks in Bathrooms
- Interior Door w/ Return Air Vent at Utility Room
- Black Paddle Fan w/ Light in Living Room
- (2) Extra LED Recessed Lights in Kitchen
- LED Recessed Light Over Shower in Master Bath
- LED Recessed Lights in Bedrooms / (2) TV Jacks
- Wire Shelf Over Laundry Area

Village Homes has tried to ensure that our printed materials for all of our homes are comprehensive and factual. We reserve the right, however, to make changes without notice in pricing, options added, specifications, materials, etc. Due to continuous product development and improvements, your home may differ in manufacturing, color and options available at the time of construction. Specifications, dimensions and measurements on printed materials are approximates based on in-house design and/or engineering drawings. Any included images are artist renderings and not intended to be an accurate representation of the home. Renderings and floor plans may be shown with optional features or third party additions.

Rev. 11/14



Installation Guide

Our Pricing includes DELIVERY, INSTALLATION and TAX (if applicable)

DOUBLE-WIDE & SINGLE-WIDE Home Installations Include:

VILLAGE HOMES

SET, LEVEL & LAG HOME TOGETHER (DW)	✓	
SEAL MATE LINE / WALLS WITH EXPANSION FOAM	✓	
FINISH ROOFING	✓	
FINISH SIDING	✓	
HANG ALL INTERIOR DOORS / FINISH MATE WALL	✓	
SEAM CARPETS & FINISH FLOORING	✓	
INSTALL WATER LINE & HEAT TAPE TO SOURCE IN SLAB Line into Slab by Others	✓	
INSTALL SEWER LINE(S) TO DRAIN(S) IN SLAB Line into Slab by Others	✓	
INSTALL ANCHORS / TIE DOWNS	✓	
INSTALL PREMIUM WHITE VINYL SKIRTING Insulated Products - Optional	✓	
INSTALL (2) SETS OF FIBERGLASS STEPS W/ RAILING	✓	
CLEAN HOME (Damp Wipe Surfaces, Broom & Vacuum)	✓	
REMOVE TRASH	✓	
REMOVE AXLES & TIRES	✓	
MANUFACTURERS WARRANTY (New Homes)	✓	
7-10 YEAR LIMITED STRUCTURAL WARRANTY (New Homes)	✓	
HEATING / COOKING FUEL TANK(S) & INSTALLATION Buyer's Fuel Provider is Responsible for Tanks, Connections, Conversion to LP and Diagnostics	<i>Customer</i>	
CONNECT ELECTRICAL WIRE IN SLAB TO ELECTRICAL PANEL	<i>Optional</i>	
EXCAVATION / SLAB PREP / DRIVEWAY / GRADING / SEED & MULCH	<i>Optional</i>	
CONCRETE SLAB / FOUNDATION	<i>Optional</i>	
POLE / PEDISTAL / METER / DISCONNECT / CONDUIT / WIRE	<i>Optional</i>	
WELL / CONNECT TO MUNICIPAL WATER (including line into slab) Pressure Tank & Switch may be Required for Wells	<i>Optional</i>	
SEPTIC SYSTEM / CONNECT TO MUNICIPAL SEWER (including line into slab)	<i>Optional</i>	
GARAGE / DECK / PORCH	<i>Optional</i>	

1083 US Route 2, Berlin, VT 05602 | (802) 229-1592 | sales@VillageHomes.com

**Vermont & New Hampshire's MOST TRUSTED builder
of Modular & Manufactured Homes**