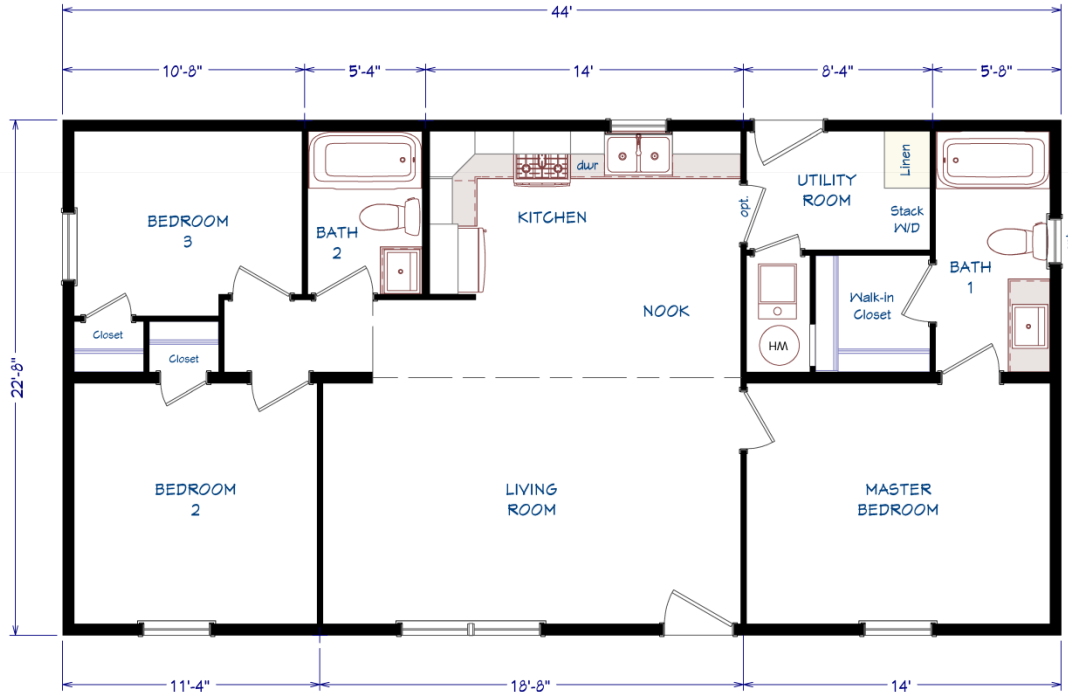


The Otter Creek

3 Bedroom
2 Bath
24 x 48 (44) / 997 s.f.



1083 US Route 2, Berlin, VT
(802) 229-1592



Construction:
Double-Wide / Multi-Section
Manufactured Home

Color:
Driftwood / Pewter

*Our Pricing includes Delivery, Installation, Sewer & Water Hook-Up, and Tax (if applicable)
[Please see an Installation Guide & Home Consultant for details]*

Upgrades

- Energy Star (Xtra Air Sealing & Insulation, 95% Eff Gas Furnace)
- Ice & Water Shield in Roof
- Shutters on Side/Rear Windows
- 3-Lite Craftsman Fiberglass Front Exterior Door
- Half Glass Fiberglass Rear Exterior Door
- 24x36 Vinyl Window in Master Bath
- Exterior Water Faucet
- 40 Gallon Water Heater
- Interior Water Shut-Off Valves Where Accessible
- In-House Main Water Line Shut-Off in Utility Room
- Perimeter Heat Ducts & Registers
- Interior Door with Return Air Vent at Utility Room
- Kitchen Faucet with Side Sprayer
- Whirlpool Appliances including Energy Star Dishwasher
- Plug Also for Electric Range
- (2) Extra LED Recessed Lights in Kitchen
- LED Recessed Light in all Bedroom
- Vinyl Foyer at Front Door Entry
- 1-Piece Fiberglass Tub/Shower in Master Bath
- 1-Piece Fiberglass Tub/Shower in Bath 2
- China Sinks in Bathrooms
- (2) TV Jacks
- 200 AMP Panel Box



Installation Guide

Our Pricing includes DELIVERY, INSTALLATION and TAX (if applicable)

DOUBLE-WIDE & SINGLE-WIDE Home Installations Include:

VILLAGE HOMES

SET, LEVEL & LAG HOME TOGETHER (DW)	✓	
SEAL MATE LINE / WALLS WITH EXPANSION FOAM	✓	
FINISH ROOFING	✓	
FINISH SIDING	✓	
HANG ALL INTERIOR DOORS / FINISH MATE WALL	✓	
SEAM CARPETS & FINISH FLOORING	✓	
INSTALL WATER LINE & HEAT TAPE TO SOURCE IN SLAB Line into Slab by Others	✓	
INSTALL SEWER LINE(S) TO DRAIN(S) IN SLAB Line into Slab by Others	✓	
INSTALL ANCHORS / TIE DOWNS	✓	
INSTALL PREMIUM WHITE VINYL SKIRTING Insulated Products - Optional	✓	
INSTALL (2) SETS OF FIBERGLASS STEPS W/ RAILING	✓	
CLEAN HOME (Damp Wipe Surfaces, Broom & Vacuum)	✓	
REMOVE TRASH	✓	
REMOVE AXLES & TIRES	✓	
MANUFACTURERS WARRANTY (New Homes)	✓	
7-10 YEAR LIMITED STRUCTURAL WARRANTY (New Homes)	✓	
HEATING / COOKING FUEL TANK(S) & INSTALLATION Buyer's Fuel Provider is Responsible for Tanks, Connections, Conversion to LP and Diagnostics	<i>Customer</i>	
CONNECT ELECTRICAL WIRE IN SLAB TO ELECTRICAL PANEL	<i>Optional</i>	
EXCAVATION / SLAB PREP / DRIVEWAY / GRADING / SEED & MULCH	<i>Optional</i>	
CONCRETE SLAB / FOUNDATION	<i>Optional</i>	
POLE / PEDISTAL / METER / DISCONNECT / CONDUIT / WIRE	<i>Optional</i>	
WELL / CONNECT TO MUNICIPAL WATER (including line into slab) Pressure Tank & Switch may be Required for Wells	<i>Optional</i>	
SEPTIC SYSTEM / CONNECT TO MUNICIPAL SEWER (including line into slab)	<i>Optional</i>	
GARAGE / DECK / PORCH	<i>Optional</i>	

1083 US Route 2, Berlin, VT 05602 | (802) 229-1592 | sales@VillageHomes.com

**Vermont & New Hampshire's MOST TRUSTED builder
of Modular & Manufactured Homes**