

Autumn Leaf

Collection



CHAMPION[®]
MODULAR

Digital Version!



Why *New Image*

It's finding a home you can feel proud to call your own. It's design choices that perfectly match your need for space and comfort and frees you to express them in your own way. It's award-winning design and craftsmanship, with impeccable attention to detail. It's a commitment to providing you with the style and features that you will enjoy for years to come. It's combining everything you would want in a home with surprising affordability!

The architectural style that portrays your image, the solid craftsmanship you expect, the quality of the brands that you trust..This is what our New Image product line is all about. With flexibility in design, style, and components, it's also the essence of what New Image represents; our commitment to provide you the home of your dreams at the best value available. The New Image product line allows you to create the perfect space for whatever your needs may be, whether it's a growing family eith expandability or downsizing but maintaining the amenities you've come to love over the years. Let us create your vision, your space, your home!





Dogwood

NI-631 - 52'

3 Bed-2 Bath
1,404 Sq. Ft.

52'-0"

26'-8"



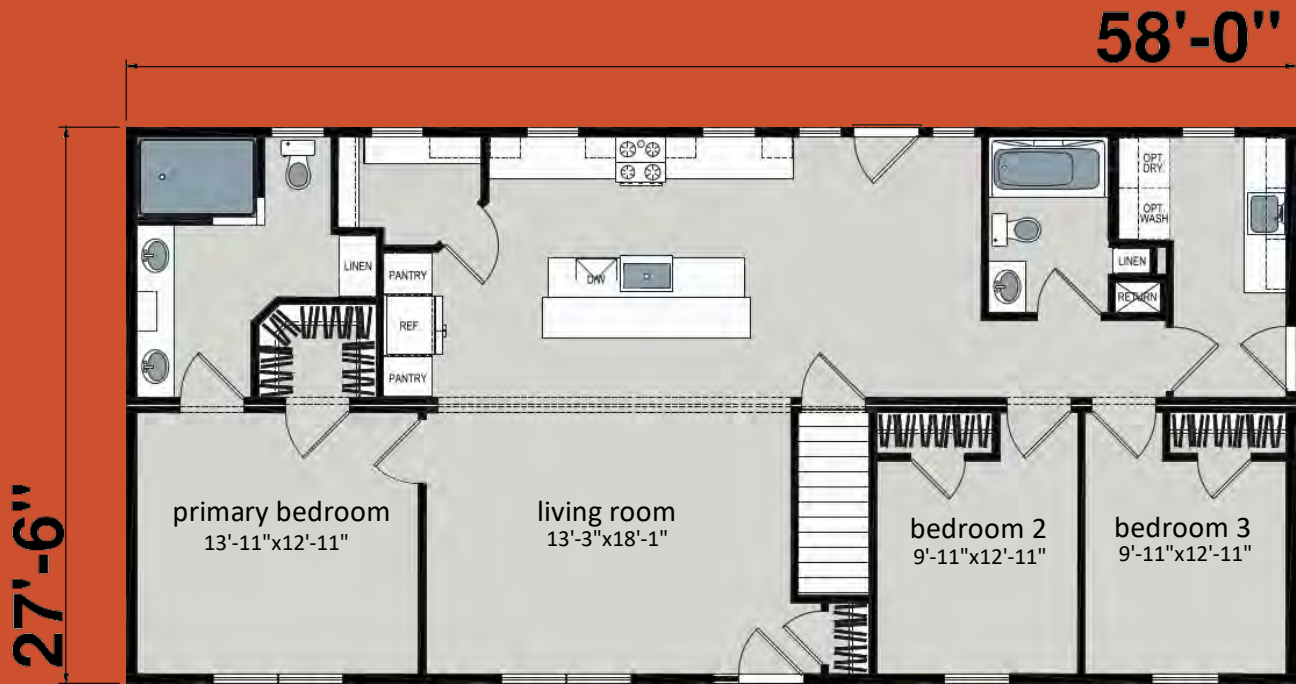
Rendering shown with exterior options



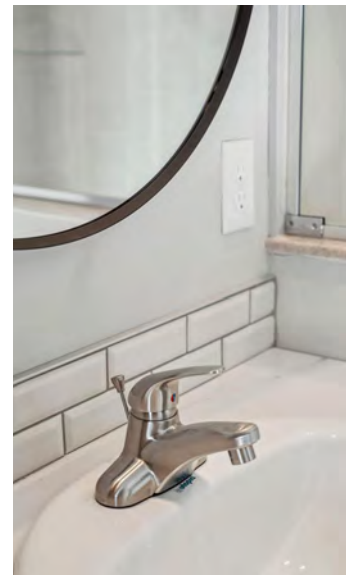
Pin Oak

NL-141

3 Bed-2 Bath
1,624 Sq. Ft.



Rendering shown with exterior options



Pin Oak

NL-141-2

3 Bed-2 Bath
1,792 Sq. Ft.

64'-0"

27'-6"



Rendering shown with exterior options

Pin Oak

NL-141-3

3 Bed-2 Bath
1,512 Sq. Ft.

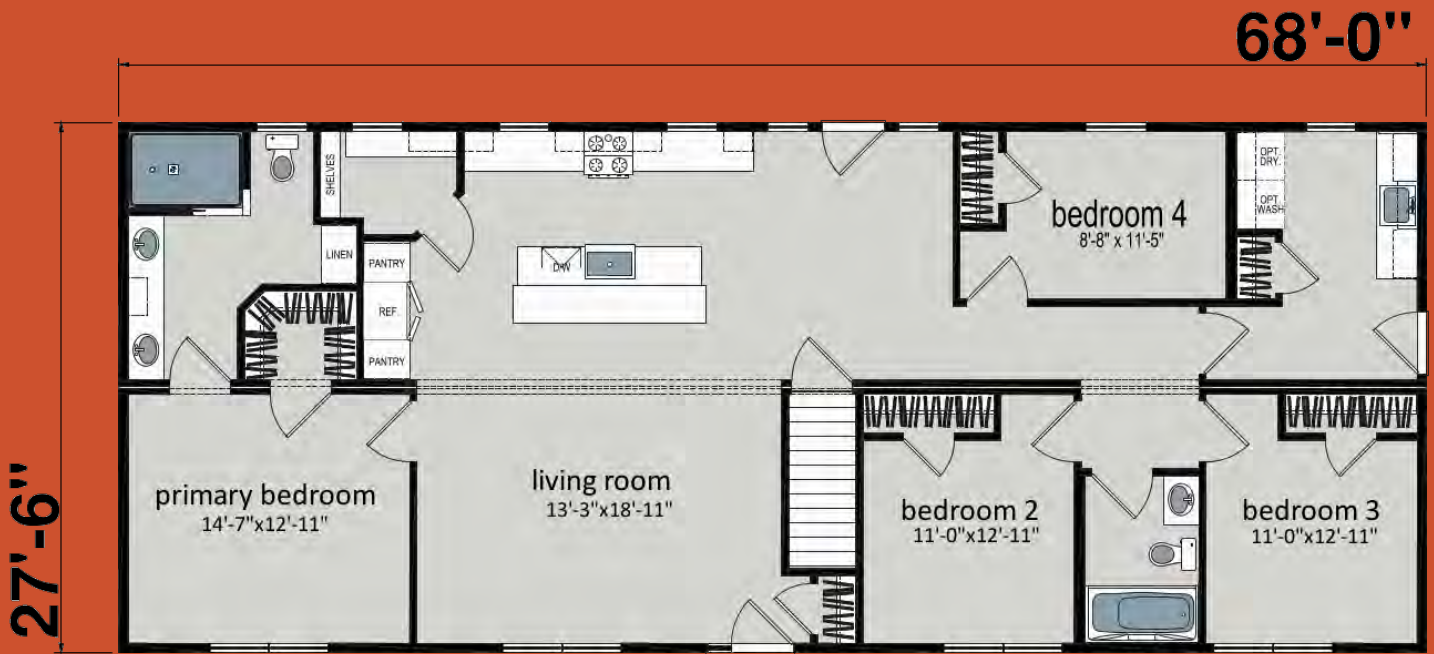


Rendering shown with exterior options

Pin Oak

NL-141-4

3 Bed-2 Bath
1,904 Sq. Ft.

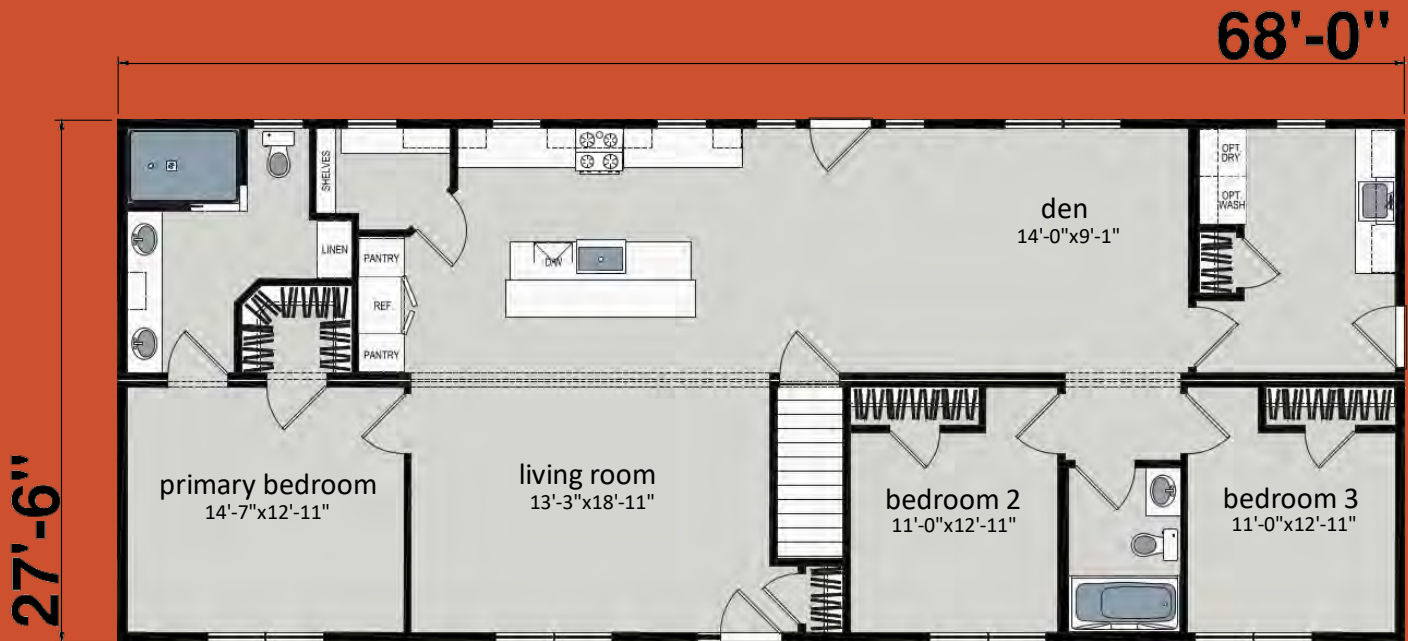


Rendering shown with exterior options

Pin Oak

NL-141-5

3 Bed-2 Bath
1,904 Sq. Ft.



Rendering shown with exterior options

River Birch

NI-627

3 Bed-2 Bath
2,108 Sq. Ft.

68'-0"

30'-4"



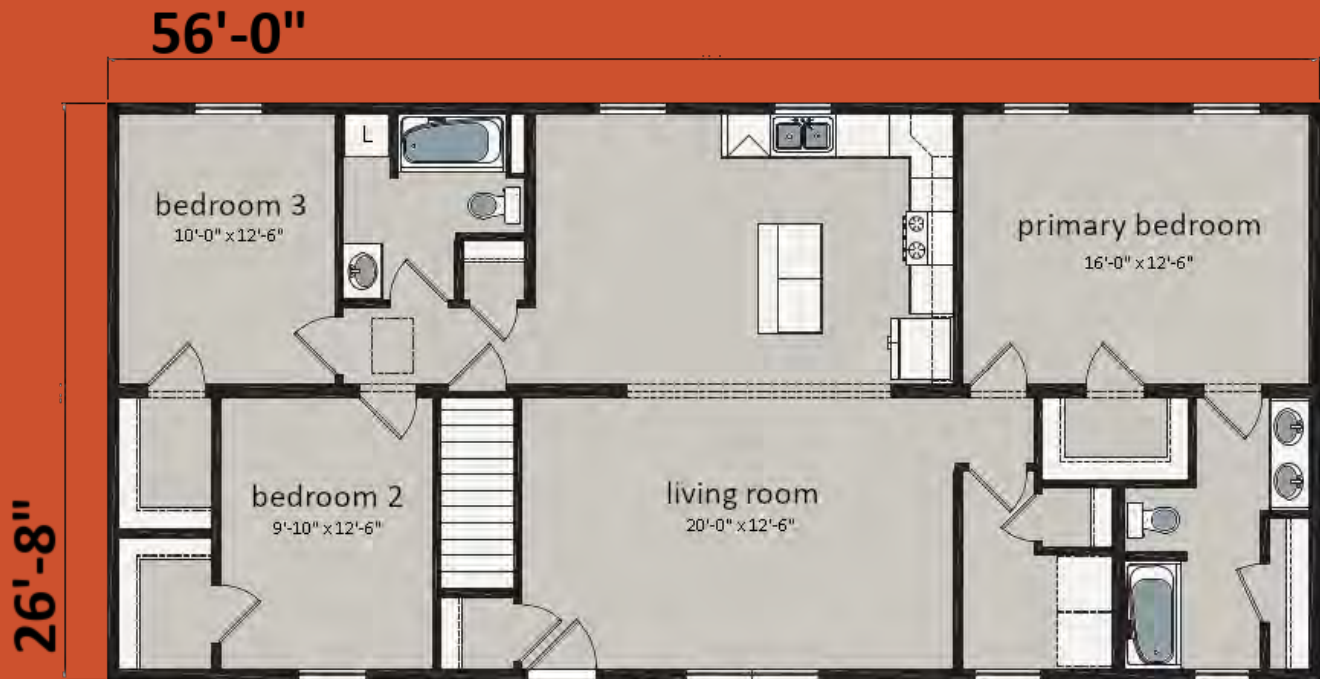
Rendering shown with exterior options



American Beech

NI-624

3 Bed-2 Bath
1,512 Sq. Ft.



Rendering shown with exterior options

Colors & Options

Scan to see more
colors/decor!



Scan to see more
options!



American Beech

NI-624 - Alternate Bathroom

3 Bed-2 Bath
1,512 Sq. Ft.



Alternate elevation shown

STANDARD

FEATURES

Autumn Leaf Collection

Pin Oak

- 9-Lite Side Door | 15-Lite Rear Door w/Flanking Picture Windows
- 3/0 Interior Doors Per Plan
- Soffit Feature w/ 5 1/4" Crown at Kitchen & Nook
- Stainless Steel Farmhouse Galley Sink w/ Chef's Coil Spring Faucet
- (2) Built-in Pantry Cabinets & Walk-In Pantry
- (2) Appliance Garages
- Full Tile Backsplash
- Shiplap on Back of Island
- 4x6 Mirage Walk-In Tile Shower
- 72" Tub/Shower at Hall Bath
- Oak Linen Cabinets at both Baths - Countertop Linen at Primary Bath
- 22 LED Lights per Plan
- Utility Room Cabinets w/Sink

River Birch

- Primary Bath Upgrades
- Shiplap Over Vanity
- Round Black Mirrors
- 4x6 Palisade Barndoor Shower
- Double Barn Doors at Den
- Complete Stainless Steel Appliance Package
- Full Tile Backsplash at Kitchen
- Base & Wall Cabinets at Utility
- Black 3-light Pendant over Island
- (3) Black Pendants at Living Room/ Kitchen 1/2 Wall
- Stainless Steel Farmhouse Sink w/ Upgrade Faucet
- COREtec Flooring (Kitchen, Living Room, & Foyer)
- 42" Wall Cabinets
- 15-Lite Door at Living Room

Dogwood

- 4x6 Palisade Barndoor Shower
- Desk in Hall
- Walk-In Pantry

*This specification list is only a guideline for what is included; please refer to your actual specification and what is included in your order. These specifications may not meet your state or local code requirements.

**Champion Modular may, in its sole discretion, change any specifications as to materials or design which are required by the availability of materials, vendor pricing, or any other reason; provided such changes in specifications do not affect the structural integrity of the home.





New Image Standard Specs

Floors

- 2x10 Floor Joists @ 16" o.c. with Solid 2x10 Bridging
- 3/4" Tongue & Groove OSB Floor Decking, Glued and Nailed
- 18 oz. carpet with Standard Pad and Tack Strip
- Vinyl Flooring by Congoleum

Exterior/Marriage Walls

- 2x6 Exterior Wall Studs at 16" o.c.
- 2x4 Mate Wall Studs at 16" o.c.
- R-21 Fiberglass Exterior Wall Insulation
- OxBoard exterior wall sheathing
- 8' Sidewall Height
- Lifetime Warranted 3800 series 4/4 Vinyl Siding
- Raised Panel Shutters at Front Elevation

Roofs

- 5/12 Roof Pitch at 24" o.c. for all ranch & 2-story models
- 12/12 Roof Pitch at 24" for all capes
- Eave overhangs on all models
- 12" gable overhangs on all models
- R-38 blown-in roof insulation in all ranch & 2-story models
- R-38 blown-in insulation in all capes behind knee-walls with R-30 blown under 2nd floor decking
- Top flips are shingled on 12/12 roof configurations (when applicable)
- Architectural shingles w/synthetic underlayment
- Ice and water shield at eaves & valleys
- Shingle over ridge vent with filter core
- 7/16" OSB roof sheathing with "H" clips

Exterior Doors/Windows

- 6-panel 3/0 fiberglass front door w/rot resistant jamb & brushed nickel knob & deadbolt
- 6-panel 3/0 fiberglass rear door w/rot resistant jamb & brushed nickel knob & deadbolt
- 6-panel 3/0 fire door w/steel jamb and brushed nickel knob & deadbolt (per plan)
- Kinro all vinyl low E single hung windows w/grids & screens
- All 12/12 roof configurations include one window for each gable end panel
- Clear Kinro all vinyl 6/0 x 6/8 low E slider with screen (per plan)

Interior Walls/Ceilings

- 2x4 interior wall studs at 24" o.c.
- 8' flat ceilings throughout with smooth finished drywall
- Smooth finished 1/2" drywall, glued, & screwed on all walls
- Smooth finished 1/2" drywall, glued on all ceilings
- All walls & ceilings w/2 coats of white vapor barrier primer paint
- Carpet grade stairs (where applicable)

Interior Doors/Moldings

- 2-Panel white interior doors w/brushed nickel knob hardware
- White door jambs & stops
- Arts & Crafts white casing/molding, painted white wood windowsills
- All dropped headers are drywall wrapped

Kitchen

- Stained oak full overlay frame & panel cabinets
- Hardwood cabinet stiles & rails
- Concealed cabinet hinges & full extension drawer glides throughout
- Dovetail drawer boxes
- Adjustable shelves in wall cabinets
- Tilt-Out sink tray at all sink base cabinets (where applicable)
- Square brushed nickel cabinet pull hardware
- Drawer over door base cabinet design
- 2 1/2" oak crown molding @ cabinets
- WilsonArt crescent edge laminate countertops w/one row 4" dry stacked tile
- Broan range hoods vented to exterior (where applicable)
- Brushed nickel single lever faucet w/sprayer
- 8" deep double bowl stainless steel sink

Baths

- 36" high vanity cabinets with stained oak full overlay frame & panel cabinets
- WilsonArt crescent edge laminate vanity tops w/one row 4" dry stacked tile
- China drop-in lavatory bowls
- Single lever brushed nickel lavatory faucets
- Beveled edge mirror w/one recessed light over each bowl
- Drywalled 60" one-piece tub/shower
- Tile showers w/ glass soap ledge
- Palisade showers w/ wire soap dish
- Elongated commode
- Whole house fan in hall bath
- Bath fan/light combo switched separately in other bathrooms

Electrical System

- 200 Amp 40 space service panel
- Brushed nickel ceiling light package
- Recessed lights STD @ Kit, Sink, halls, utility, WICs, & WIPs - 4 @ DR, 1 @ hall bathtub/shower
- Exterior light @ each door
- AC/DC smoke detectors per code
- (1) CO Detector
- Toggle switches and duplex receptacles
- GFI receptacles per code
- 2 Outside GFI receptacles (one @ front and rear)
- Dryer receptacle & vent are optional
- (2) Electrical circuits are standard in 7/12 storage, and 12/12 cape attic space

Heating System

- Boots/Floor Registers stubbed
- Other heating systems are optional

Plumbing System

- Pex supply lines stubbed through floor
- PVC Schedule 40 waste & drain lines stubbed through floor
- Individual shut-off valves throughout
- Clothes washer plumbing is optional
- 12/12 Capes are standard with (1) hot water line, (1) cold water line & (1) 3" drain
- 1 Frost-free faucet, shipped loose

Warranties

- Ten (10) year major structural defect protection (valid only if home-owner is registered within 60 days of retail delivery)
- Two (2) year warranty on portions of heating & electrical systems
- One (1) year limited product warranty
- Individual product warranties provided by product manufacturers direct to retail consumer





NEW IMAGE[®]

H O M E S



NewImageModulars.com



451 Southern Ave
Strattanville, PA 16258