


MANORWOOD

20
25



BINKLEY
MANORWOOD



TABLE OF CONTENTS



<u>NAME</u>	<u>MODEL</u>	<u>SQ FT</u>	<u>PAGE</u>
Binkley 1	9M32522A	1596	3
Binkley 2	9M32543A	1674	4
Binkley 2 Photos			5
Binkley 3	9M32643A	1916	6
Binkley 3 Photos			7
Classic Craft Cabinetry			8
Binkley 4	9M41563A	1852	9
Binkley 6	9M28643A	1864	10
Binkley 8	9M55423A	1895	11
Binkley 7	9M32683A	2097	12
Binkley 5	2M28483A	2206	13
Photos			14
inHouse			15

CREATING HOMES FOR LIVING

Style: Cape
 Square Feet: 1596 - 1st Floor
 830 - 2nd Floor

Size: 3252
 Bedrooms: 5
 Bathrooms: 3

Optional Features:

- 6' Cape Dormer
- 27'4" Twin Peak Dormer
- 12" Dormer
- Window in Gable End
- Shake Siding Accent
- Window Lineals
- Upgraded Front Door
- Sidelite
- Dutch Eaves

Features On-Site

by Others:

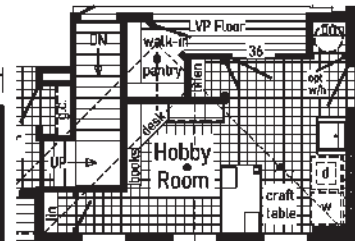
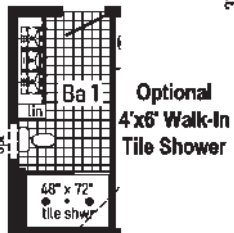
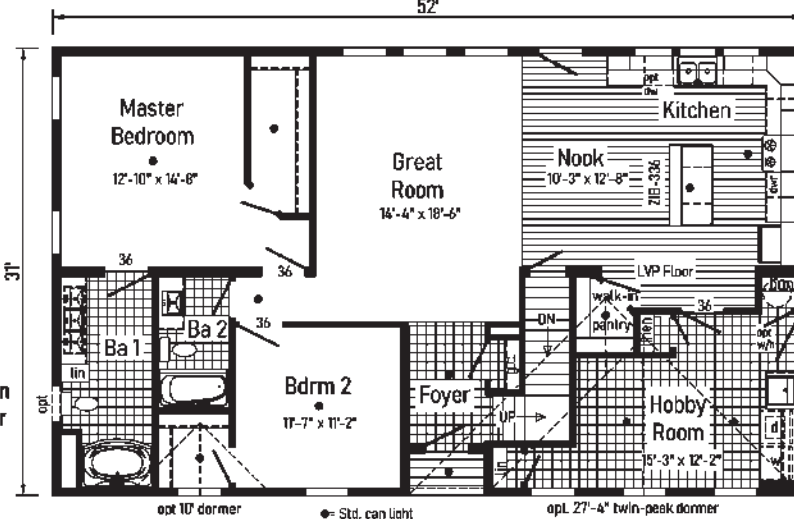
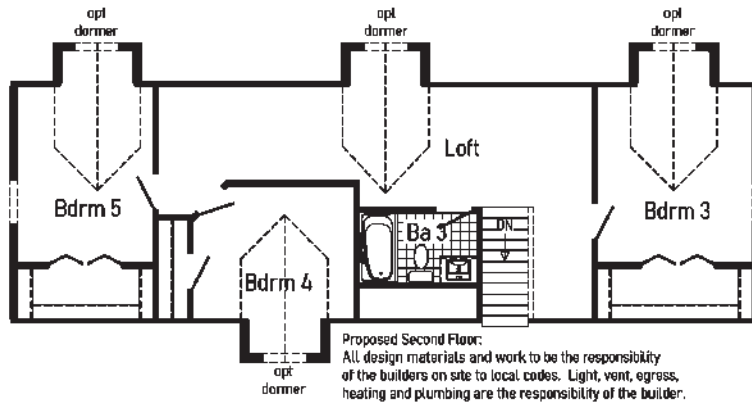
- Garage
- Gutters and Downspouts
- Corbels

Some features shown on renderings may not be available or will have to be done on-site by others

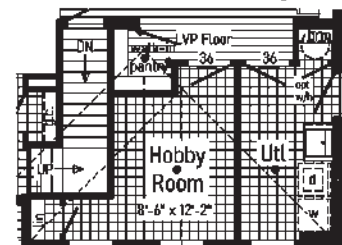


Binkley 1

9M32522A (2MC3601-X)



Optional Hobby Room Desk, Craft Table & Cabinetry



Optional Separate Hobby Room



Style: Ranch or Cape
 Square Feet: 1674
 Size: 3254
 Bedrooms: 3
 Bathrooms: 2

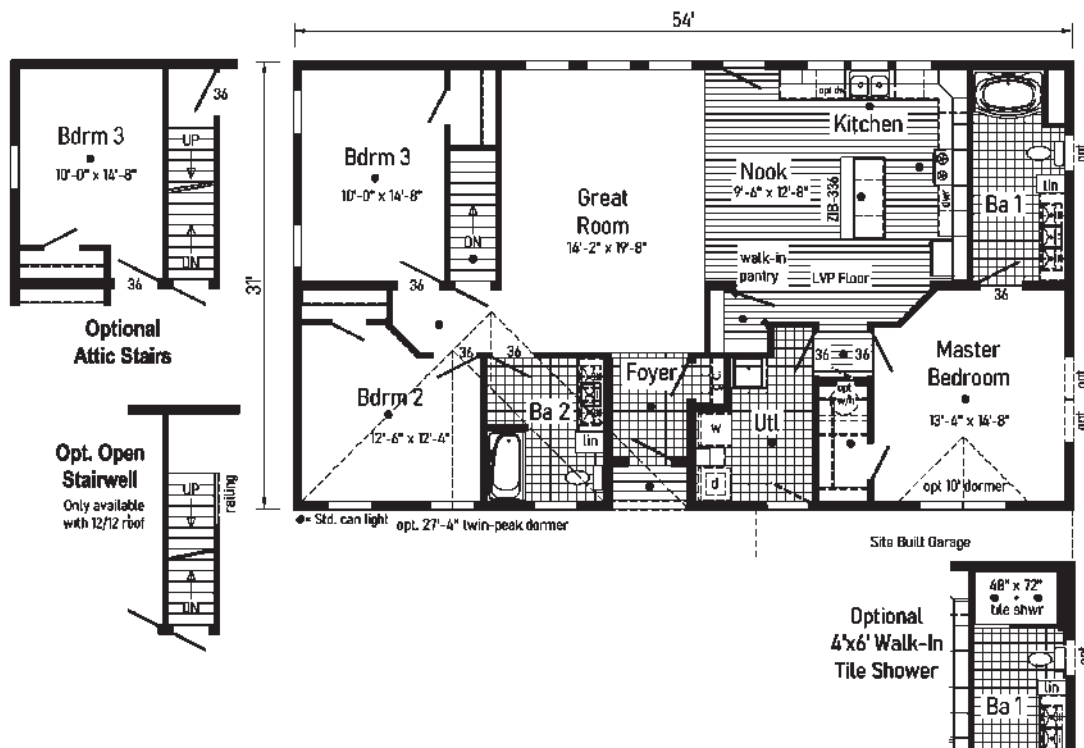
Optional Features:
 - 27'4" Twin Peak Dormer
 - 9/12 Roof
 - 6' Cape Dormer
 - Shake Siding Accent
 - Upgraded Front Door
 - Sidelite

Features On-Site
 by Others:
 - Garage
 - Gutters and
 Downspouts

Binkley 2

9M32543A (2M3601-X)

Some features shown on renderings may not be available or will have to be done on-site by others





Scan to Watch Video!



2017
Best New Home
Awards
Modular Home
1900 sq. ft. or Less



2017 Best New House Design

*Please use pictures for floorplan vision only. Decors and materials used are constantly changed and improved.



Style: Ranch or Cape
 Square Feet: 1916
 Size: 3264
 Bedrooms: 3
 Bathrooms: 2

Optional Features:

- 22' Dormer
- Wood Pediment in Dormer
- Vertical Siding
- Stone Siding Accent
- Black Windows
- Window Lineals
- Upgraded Front Door

Features On-Site

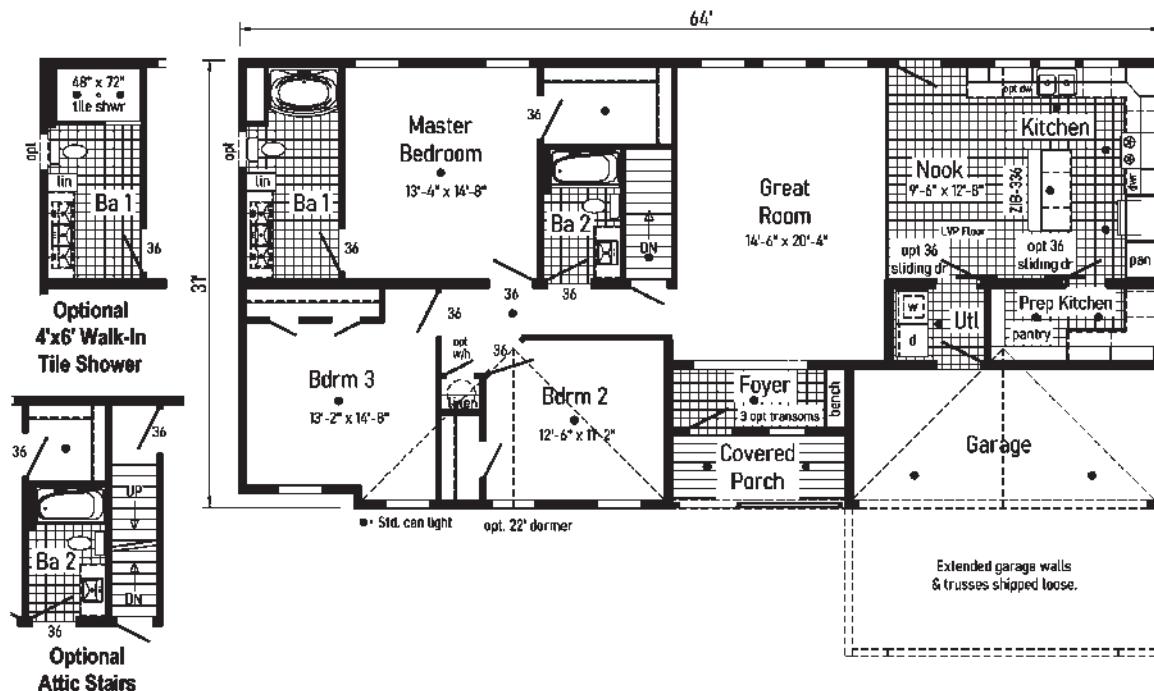
by Others:

- Garage

Binkley 3

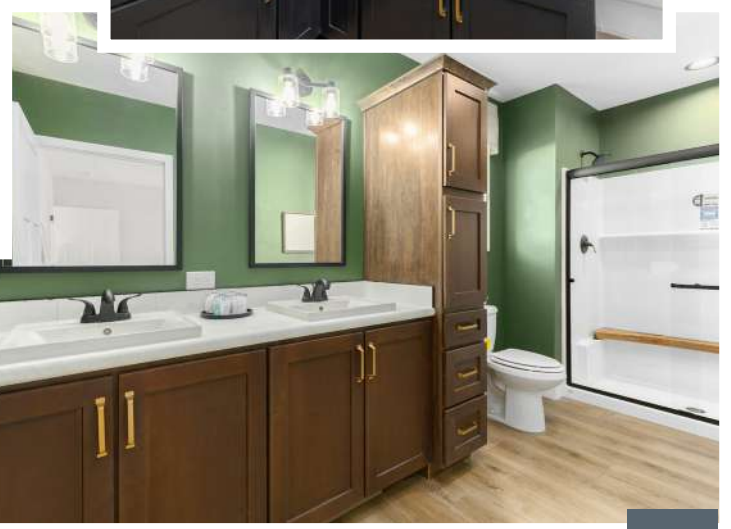
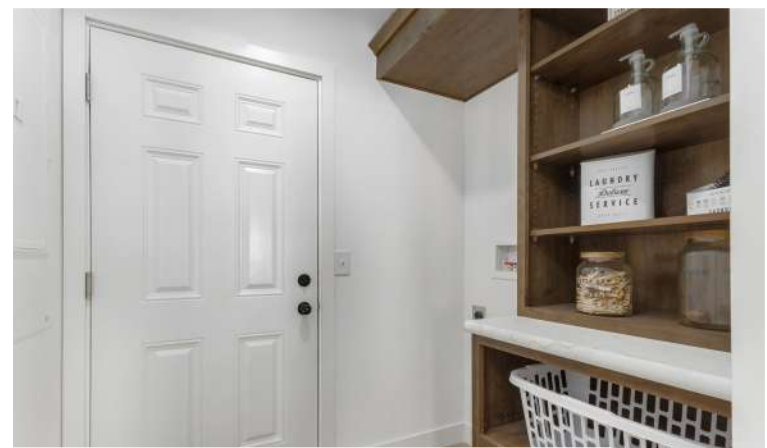
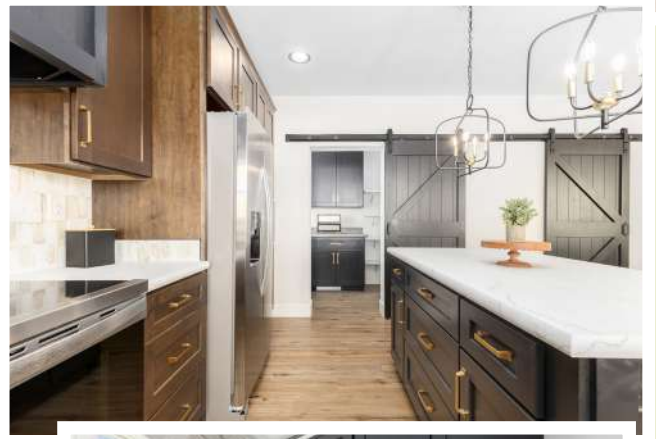
9M32643A (2M3602-X)

Some features shown on renderings may not be available or will have to be done on-site by others





Scan to Watch Video!



*Please use pictures for floorplan vision only. Decors and materials used are constantly changed and improved.

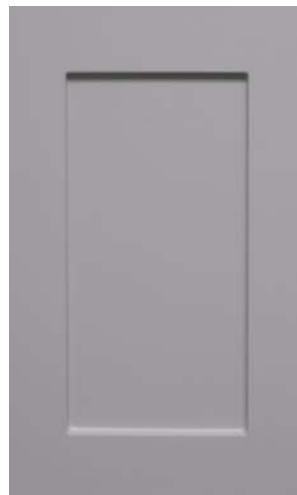
Cabinets & Hardware



American Maple
Mission Flat Panel
Stained



Rustic Elm Oak
Mission Flat Panel
Stained



Shadow Grey
Mission Flat Panel
Stained Oak



White
Mission Flat Panel
Painted Maple



Matte Black



Antique Silver



Brushed Gold



Black Onyx
Mission Flat Panel
Painted Maple

CLASSIC CRAFT CABINETRY.

A cornerstone of a good kitchen is the cabinetry. It should look good, perform over time, and adjust to your changing needs. Our Classic Craft KCMA-certified cabinets are strong, good-looking, and built to last.

All of our cabinets are built to the rigorous Kitchen Cabinet Manufacturers Association, and must pass the same testing as Merillat, Marsh, Aristokraft, and the best store-purchased cabinets. If your kitchen is important to you, then why would you want an inferior cabinet?

Simply put, our cabinets are heavier, stronger, and squarer. Our cabinets need to pass many tests, including:

- Overhead cabinets rated to over 500 pounds capacity;
- Drawers opened 25,000 times - and with weight;
- Cabinet doors opened 25,000 times;
- Harsh testing of cabinet finishes.
- Our cabinets are regularly (and randomly) tested by authorized third-parties.

In addition, our KCMA Certified cabinets offer the following:

- 3/4" Adjustable Shelves with Finished Edges in Overhead Kitchen Cabinets
- Hidden Hinges on all Cabinets
- 3/4" Adjustable Half-Shelf in Kitchen Base Cabinet
- Recessed Toe-Kick for Ease of Working at Cabinet
- Precision-Cut and Dadoed Cabinet Components

Through on-going tests performed by an experienced, independent laboratory, the KCMA certification program assures you that any cabinet bearing the blue and white KCMA seal complies with the rigorous standards set by the American National Standards Institute (ANSI) and KCMA. For more details on KCMA certification, visit: www.kcma.org.

Style: Ranch or Cape
 Square Feet: 1852
 Size: 4156
 Bedrooms: 3
 Bathrooms: 2

Optional Features:

- Vertical Siding
- Shake Siding Accent
- Dormer Window
- Window Lineals
- Upgraded Front Door

Features On-Site

by Others:

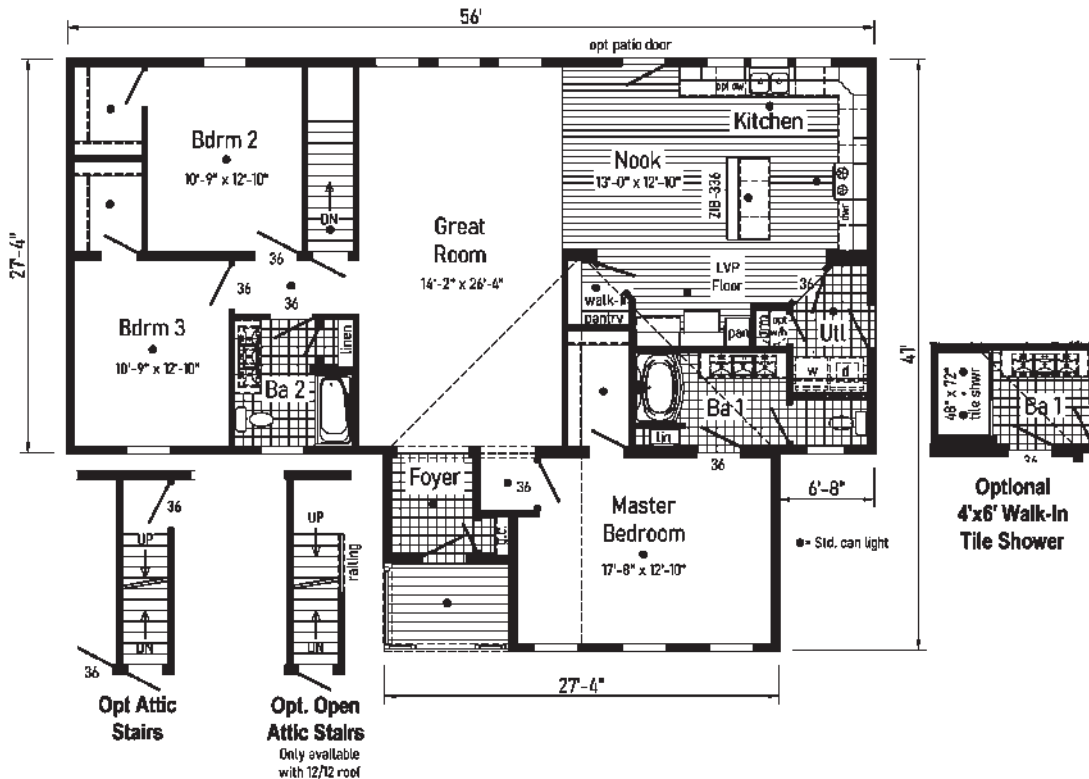
- Garage
- Gutters and Downspouts



Binkley 4

9M41563A (3M3601-R)

Some features shown on renderings may not be available or will have to be done on-site by others





Style: Ranch or Cape
 Square Feet: 1864 - 1st Floor
 980 - 2nd Floor
 Size: 3663/4
 Bedrooms: 3
 Bathrooms: 2

- Optional Features:**
- 12/12 Roof Pitch
 - 6' Cape Dormer
 - Chalet Trapezoid Windows
 - Shake Siding Accent
 - Window Lineals
 - Clay Trim Package
 - Upgraded Front Door
 - Window Grids

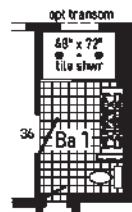
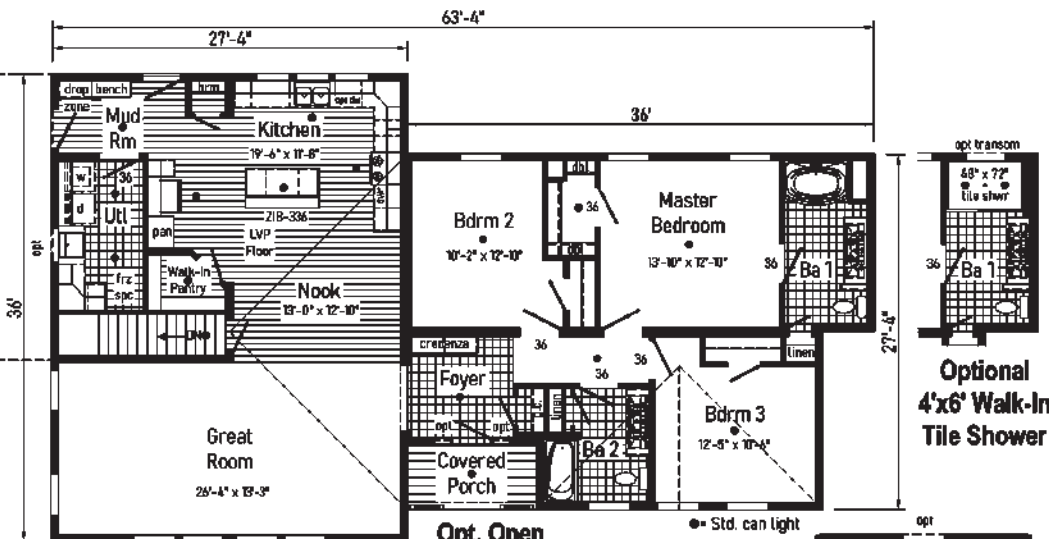
Features On-Site by Others:

- Garage
- Gutters and Downspouts

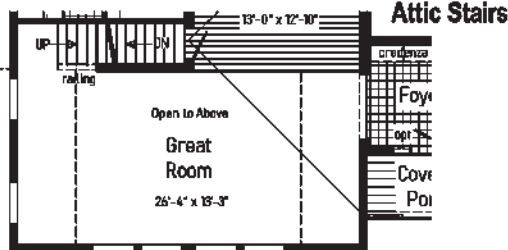
Binkley 6

9M28643A (2M3604-R)

Some features shown on renderings may not be available or will have to be done on-site by others



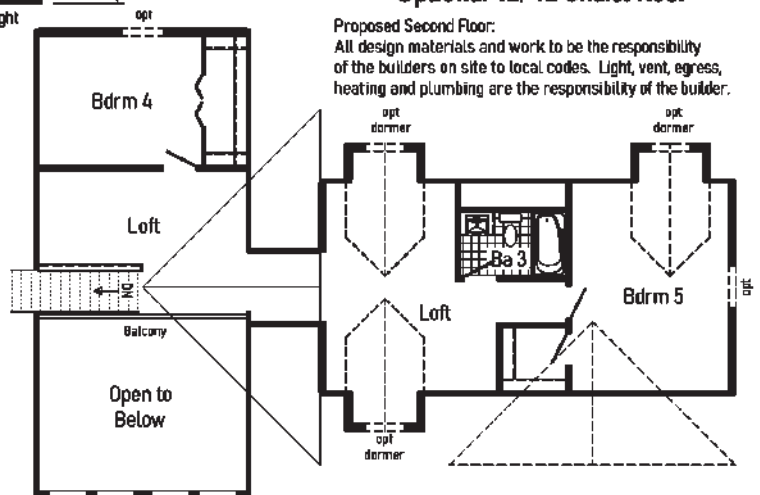
Optional 4'x6' Walk-In Tile Shower



Optional 12/12 Chalet Roof with Trapezoid Windows

Proposed 2nd Floor with Optional 12/12 Chalet Roof

Proposed Second Floor:
 All design materials and work to be the responsibility of the builders on site to local codes. Light, vent, egress, heating and plumbing are the responsibility of the builder.



Style: Cape
 Square Feet: 1895 - 1st. Floor
 - 2nd Floor

Size: 5542
 Bedrooms: 3
 Bathrooms: 2

Optional Features:

- 9/12 Roof Pitch
- Twin Peak Dormer
- Shake Siding Accent
- Window Lineals
- Upgraded Front Door with sidelite

Features On-Site

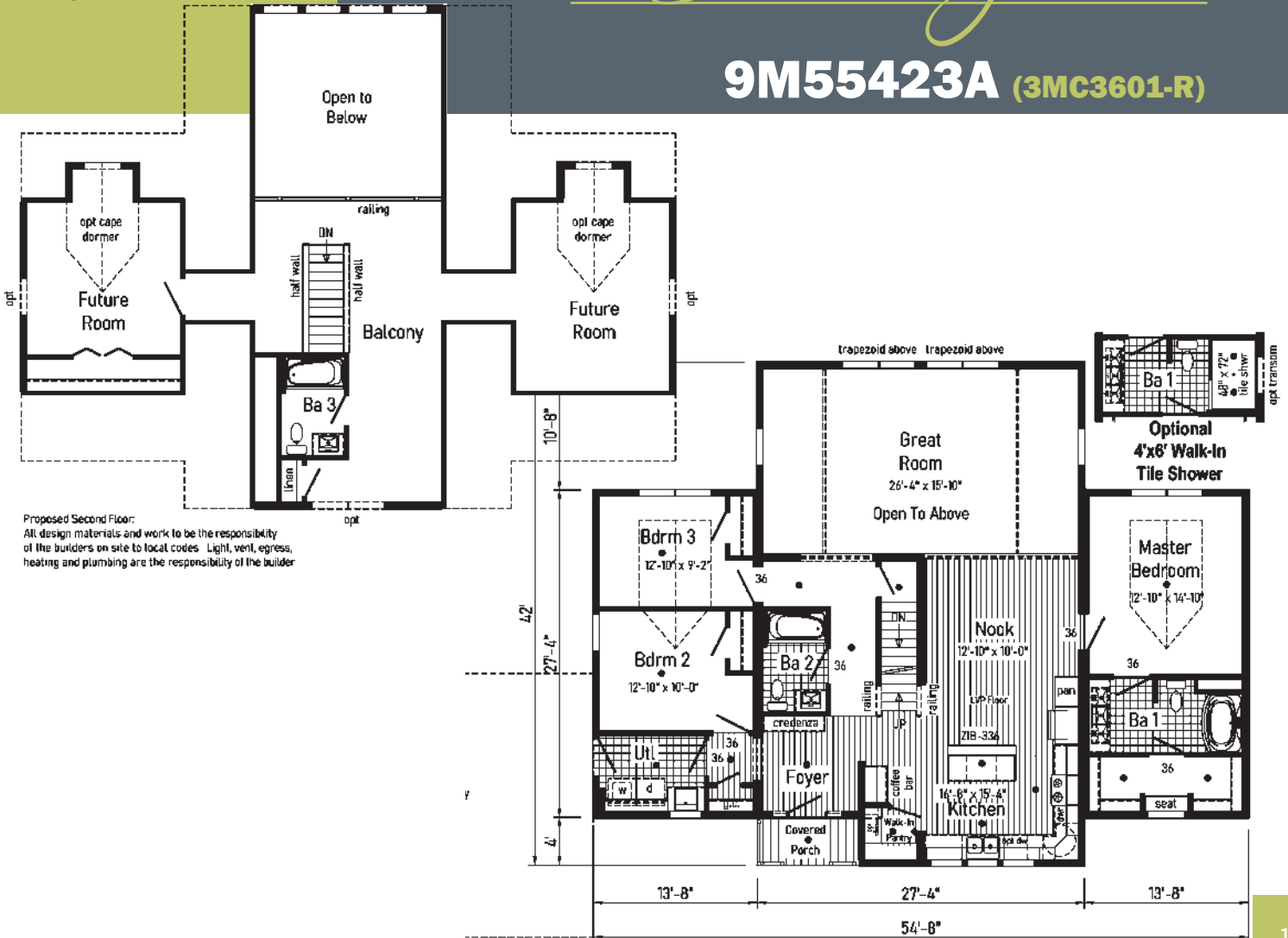
by Others:

- Garage



Binkley 8

9M55423A (3MC3601-R)





Style: Ranch or Cape
 Square Feet: 2097
 Size: 3268
 Bedrooms: 3
 Bathrooms: 2

Optional Features:
 - 6' Cape Dormers
 - 22' Dormers with Shake Accent
 - Upgrade Front Door and Lineals

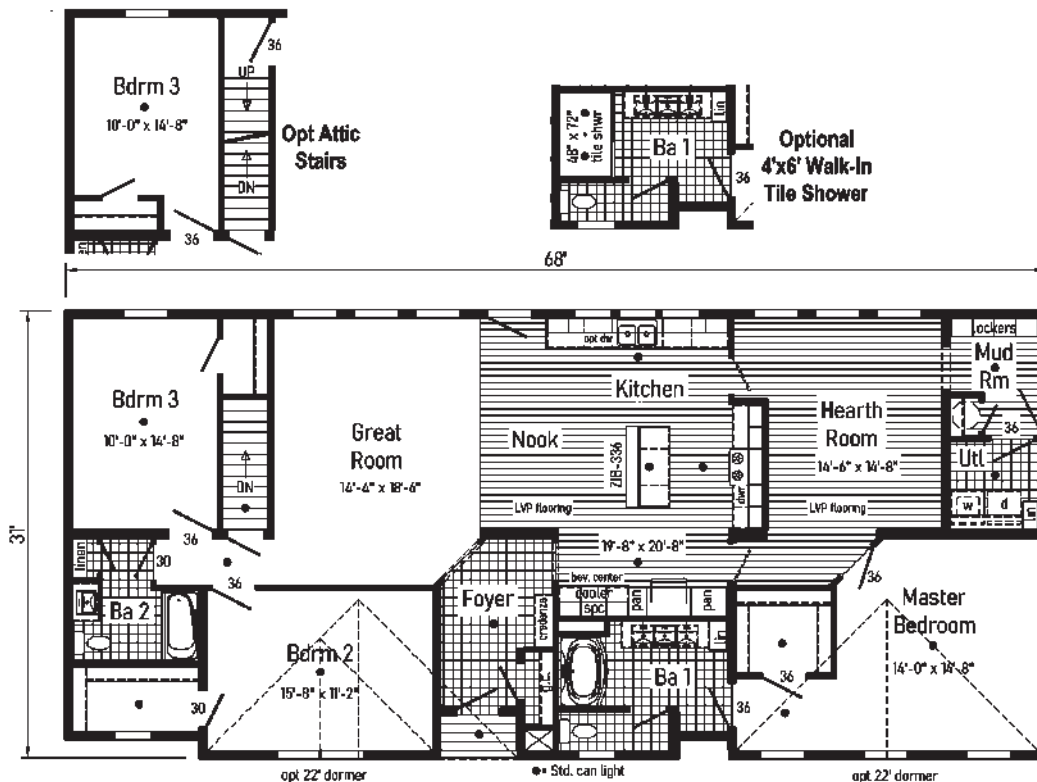
Features On-Site by Others:

- Garage
 - Gutters and Downspouts

Binkley 7

9M32683A (2M3603-X)

Some features shown on renderings may not be available or will have to be done on-site by others



Style: 2-Story
 Square Feet: 2225
 Size: 2848/34
 Bedrooms: 3-4
 Bathrooms: 2.5

Optional Features:

- Flush Dormer
- Window Lineals
- Window Grids
- Clay Trim Package
- Shake Siding Accent
- Upgraded Front Door
- Sidelite
- 2 Porch Lights

Features On-Site
 by Others:

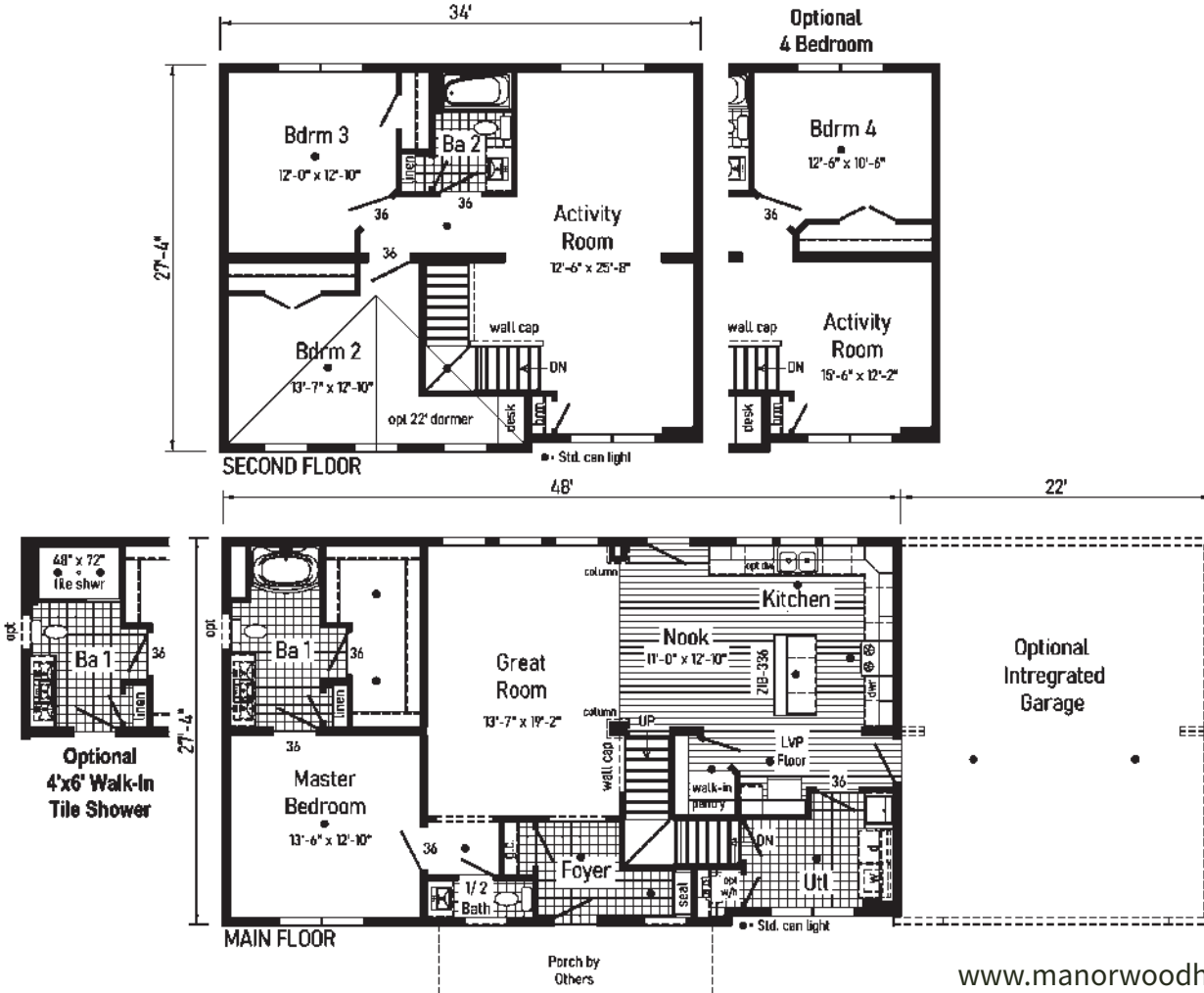
- Garage
- Covered Porch
- Gutters and Downspouts

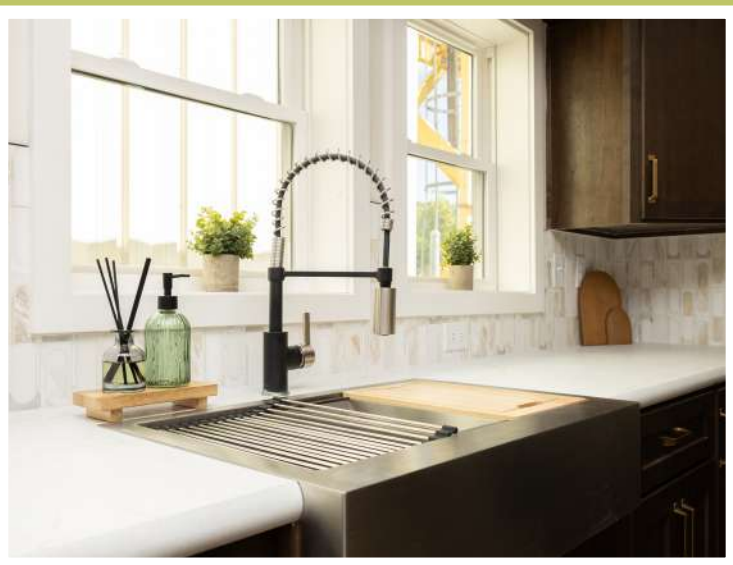
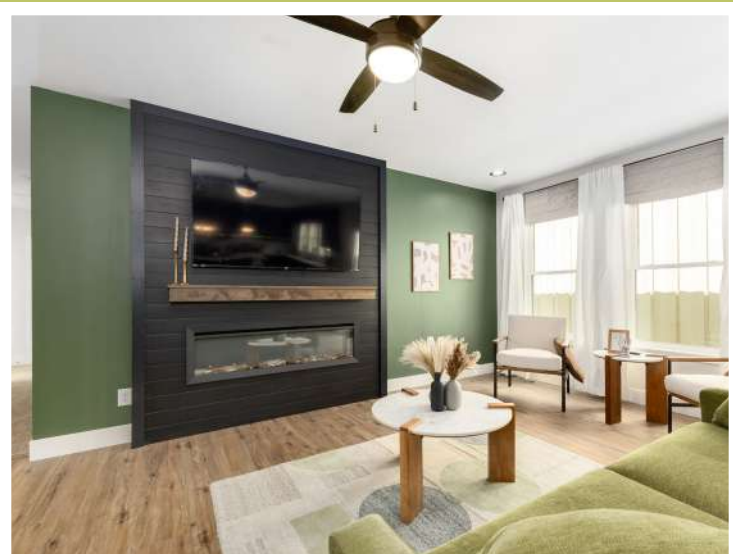


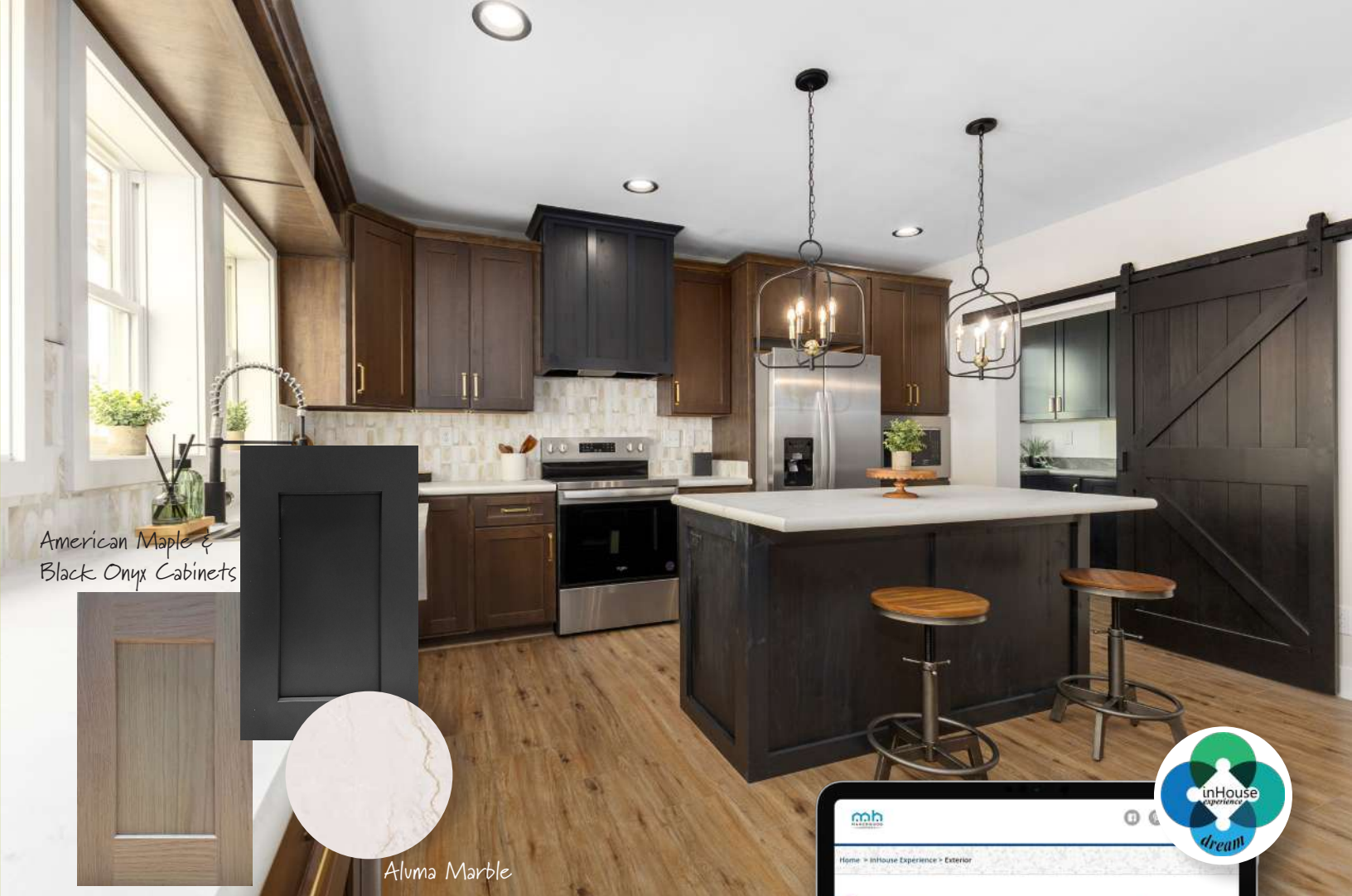
Binkley 5

2M28483A (6M3601-R)

Some features shown on renderings may not be available or will have to be done on-site by others







American Maple & Black Onyx Cabinets

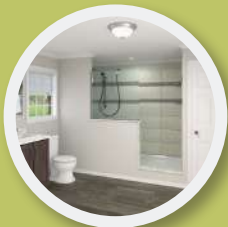
Aluma Marble



Customize Your Dream Home!



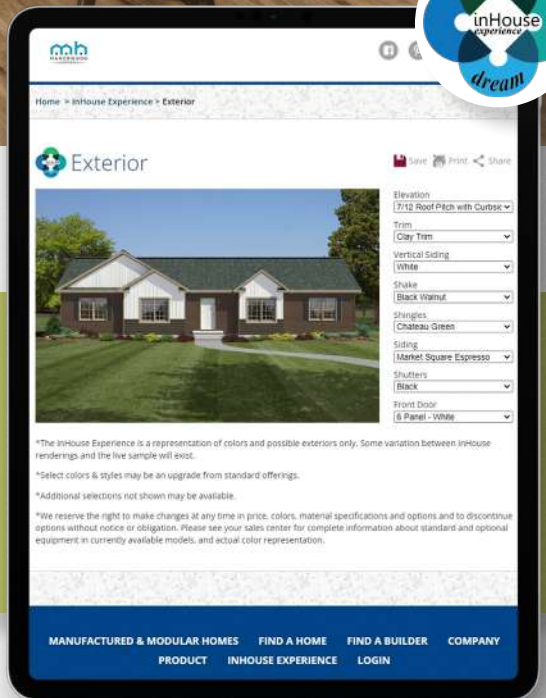
EXTERIOR



BATH



KITCHEN



Customize your dream home colors to see what your house could look like. The exterior InHouse experience allows you to select a Roof Pitch with a Dormer, Siding Color, Shingle Color, Trim Color, Shake Siding, Vertical Siding to get an idea for what your home could look like with the color scheme you have selected.

The InHouse experience gives you the opportunity to design your dream Bathroom or Kitchen. Selections range from your countertop colors, cabinet colors, vinyl floor color, appliances, even down to your kitchen sink!



www.manorwoodhomes.com/inhouse-experience



State Route 38
Emlenton, PA 16373
724-867-0189
www.manorwoodhomes.com

Connect with Us!



BINKLEY MANORWOOD



Design your dream home!

Our inHouse Experience allows you to customize your dream home. All color choices are available to help you decide on your design style and create your dream home! Visit our website today to give it a try!

www.manorwoodhomes.com/experience

