



CLASSIC
MANORWOOD



TABLE OF CONTENTS



<u>NAME</u>	<u>MODEL</u>	<u>SQ FT</u>	<u>PAGE</u>
RANCH			
American Spirit 1	9M28503A	1367	3
American Spirit 2	9M28563A	1531	4
American Spirit 3	9M28603A	1640	4
Chester	9M26322A	832	5
Saginaw	9M28443A	1203	6
Scotsdale	9M28563D	1531	7
Yorkshire	9M32683E	1664	8
Wiltshire	9M55543A	1878	9
Homestead	9M32563A	1612	10
Homestead Photos			11
LeLand	9M42643A	1943	12
LeLand Photos			13
Garrison	9M42523A	1553	14
Prestwick	9M42563A	1684	15
Gladiator	9M32683B	2078	16
CAPE			
Woodcliff	9M26442A	1144	17
Kensington	9M28482A	1312	18
Covington	9M28562A	1531	19
BELLISSIMO			
Bellissimo 1	9M28583A	1559	20
Bellissimo 1 Photos			21
Bellissimo 2	9M28643C	1709	23
2-STORY			
Marquette	2M26303B	1560	24
Burlington	2M28363A	2186	25
Paramont	2M28444A	2624	26

Style: Ranch
 Square Feet: 1367
 Size: 2850
 Bedrooms: 3
 Bathrooms: 2

Optional Features:

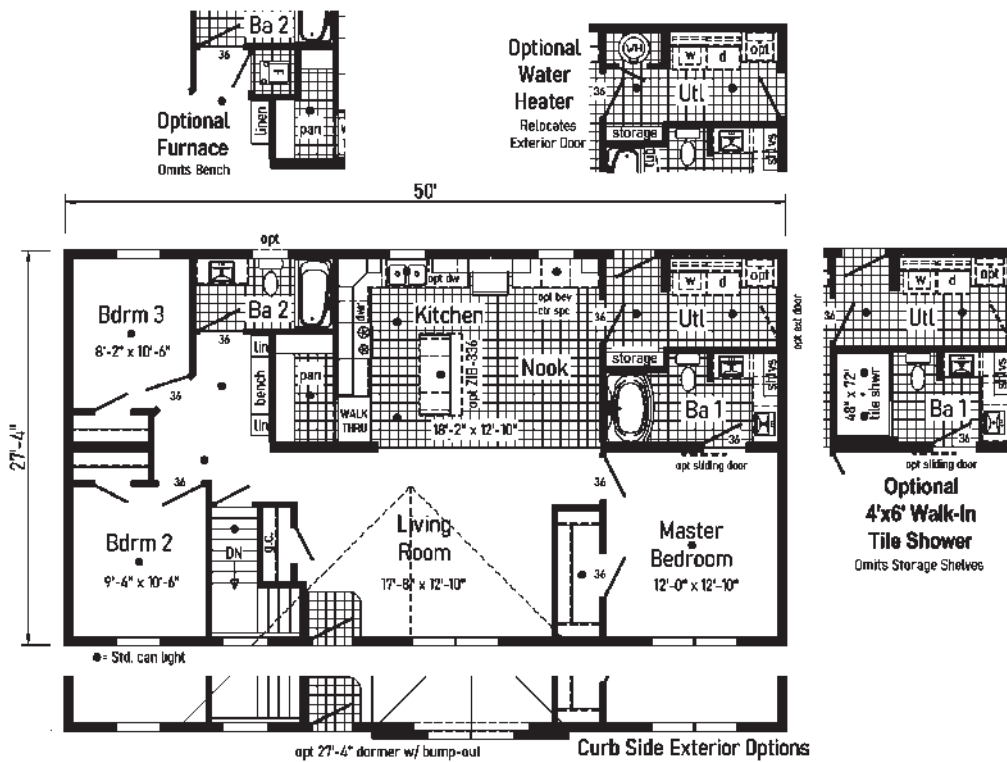
- Market Square Siding
- Black Bundle
- Black Windows & Doors
- Vertical Siding
- Dormer



American Spirit 1

9M28503A (2M3053-R)

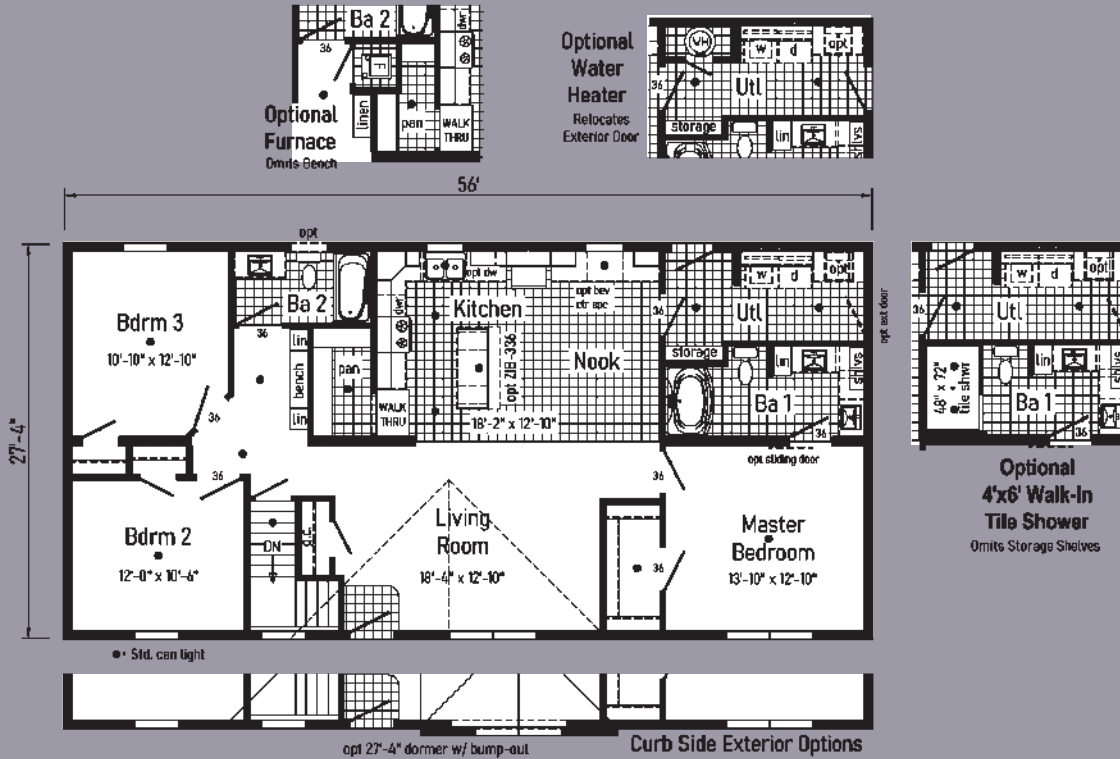
Some features shown on renderings may not be available or will have to be done on-site by others



American Spirit 2

9M28563A
(2M3055-R)

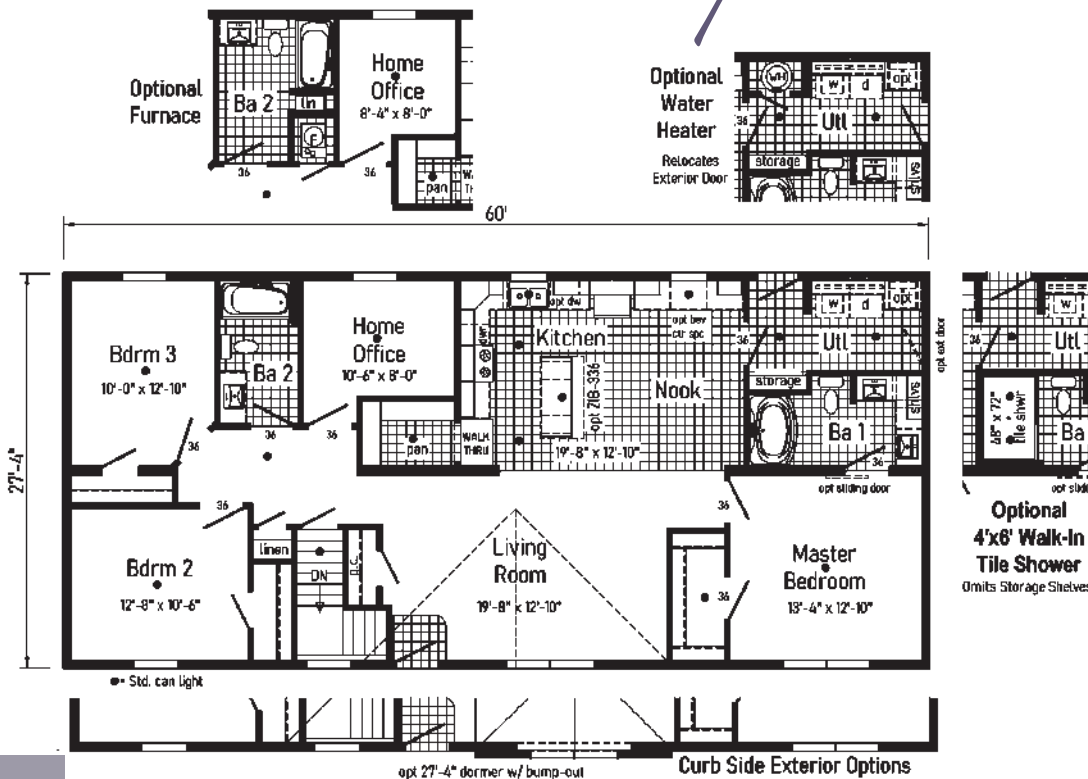
Style: Ranch
Square Feet: 1531
Size: 2856
Bedrooms: 3
Bathrooms: 2



American Spirit 3

9M28603A
(2M3056-R)

Style: Ranch
Square Feet: 1640
Size: 2860
Bedrooms: 3
Bathrooms: 2



Style: Ranch or Cape
 Square Feet: 832
 Size: 2632
 Bedrooms: 3
 Bathrooms: 2

Optional Features:

- 12/12 Roof
- 6' Cape Dormers
- Shake Siding Accent
- Upgraded Front Door
- Octagon Window N/A

Features On-Site

by Others:

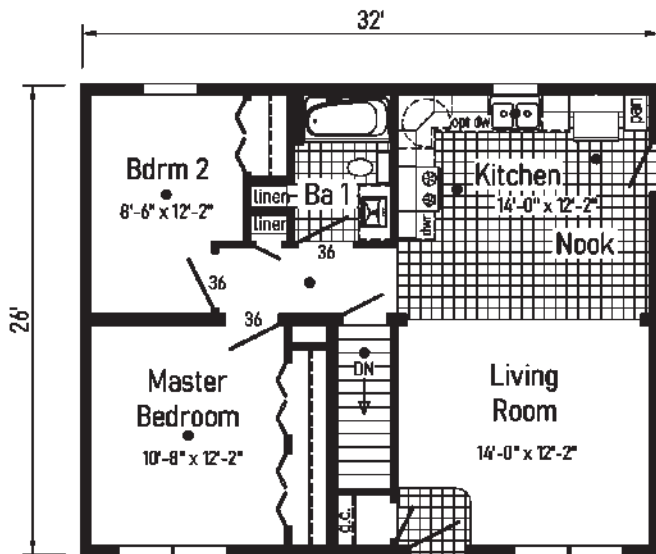
- Garage



Chester

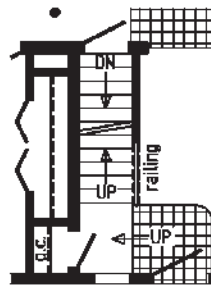
9M26322A (2M3001-N)

Some features shown on renderings may not be available or will have to be done on-site by others

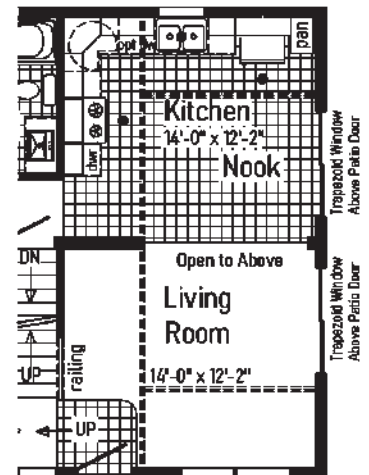


● = Std. can light

Note:
 Transported on 1 carrier
 Additional parts carrier required if butterflyed



opt octagon
Opt. Open Attic Stairs
 Only available with 12/12 roof



opt octagon
Optional Chalet with Opt 12/12 Roof
 Prow Roof, Patio Doors, Transom Windows & Balcony Above



Style: Ranch or Cape
 Square Feet: 1203
 Size: 2844
 Bedrooms: 3
 Bathrooms: 2

Optional Features:

- 12/12 Roof
- 6' Cape Dormers
- Vertical Siding
- Lineals
- Upgraded Front Door

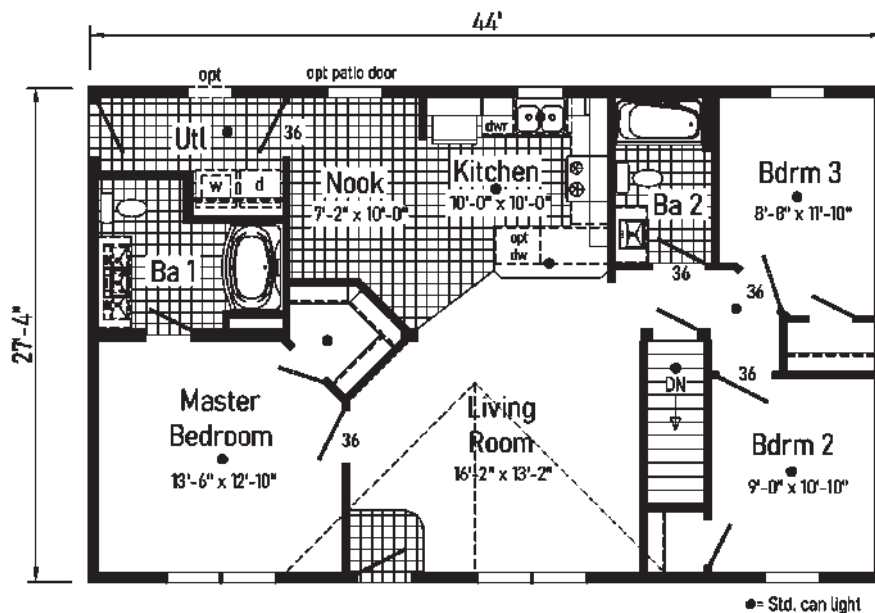
Features On-Site
 by Others:

- Garage
- Covered Porch
- Gutters and Downspouts
- Dormer Gable Pediments

Saginaw

9M28443A (2M3007-R)

Some features shown on renderings may not be available or will have to be done on-site by others



Style: Ranch or Cape
 Square Feet: 1531
 Size: 2856
 Bedrooms: 3
 Bathrooms: 2

Optional Features:

- 7/12 Roof
- 27'-4" Dormer with Bumpout
- Dutch Eaves
- Gable Deco
- Box Bay 42
- Vertical Siding
- Shake Siding Accent
- Window Lineals
- Window Grids

Features On-Site

by Others:

- Dormer Gable Pediment

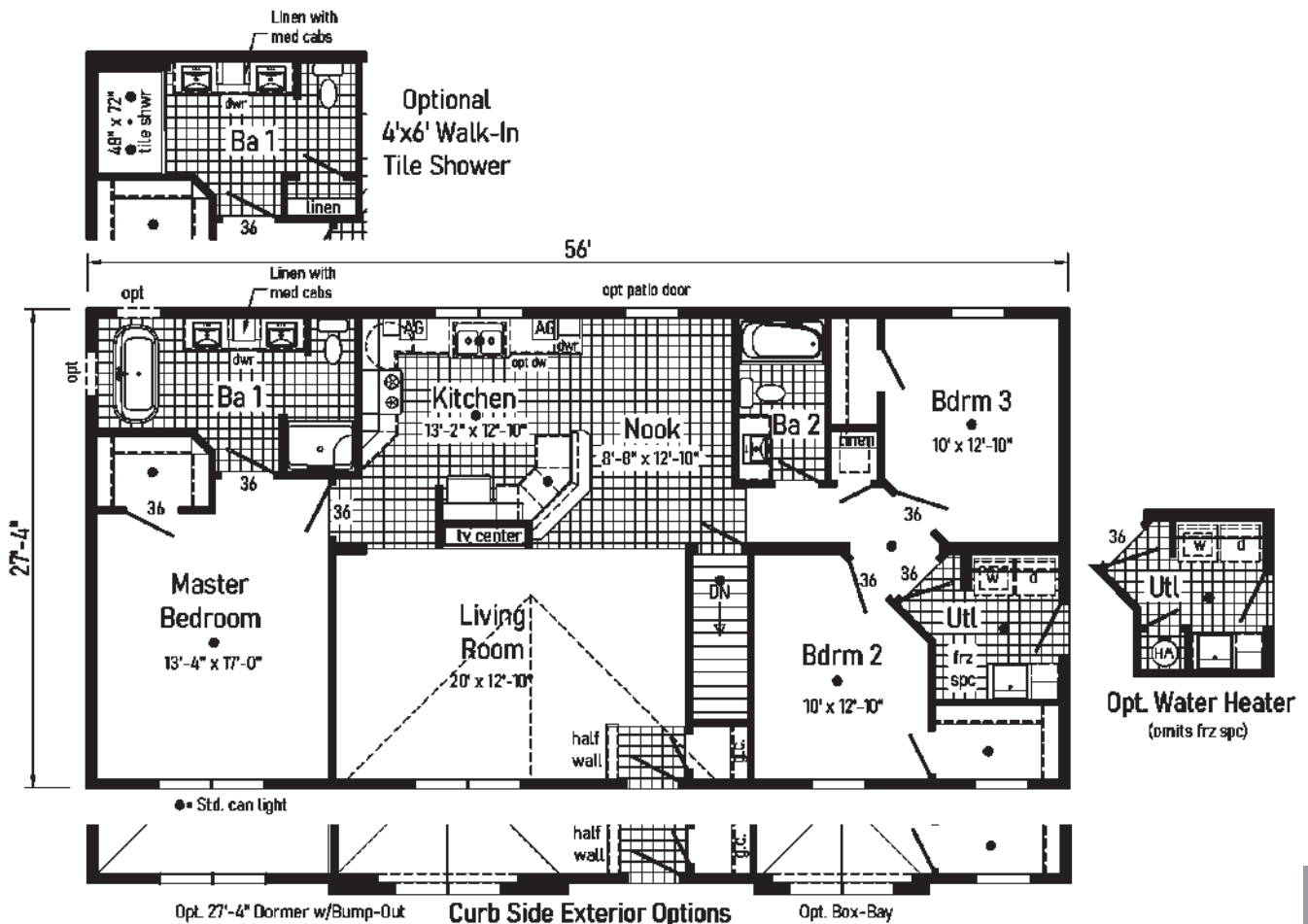
*Note: Door N/A, See Options Brochure for Available Doors

Some features shown on renderings may not be available or will have to be done on-site by others



Scotsdale

9M28563D (2M3009-R)





Style: Ranch or Cape
 Square Feet: 1664
 Size: 3268
 Bedrooms: 3
 Bathrooms: 2

Optional Features:

- Dutch Eaves
- Full Eave Return
- Gable Deco
- Shake Accent Siding
- Window Grids
- Sidelite

Features On-Site
 by Others:

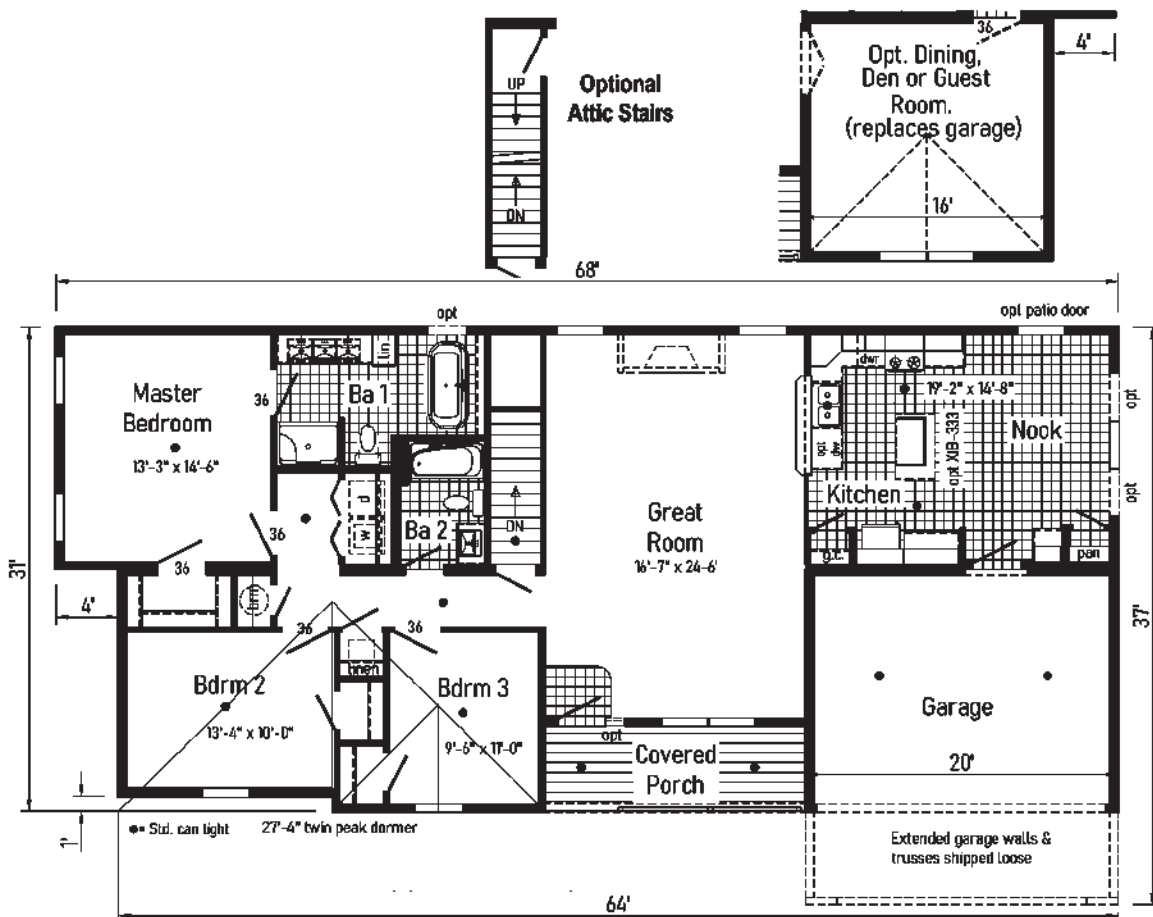
- Stone Facade
- Extended Garage
- Gutters and Downspouts
- Dormer Gable Pediments

*Note: Door N/A, See Options Brochure for Available Doors

Some features shown on renderings may not be available or will have to be done on-site by others

Yorkshire

9M32683E (2M3021-X)



Style: Ranch or Cape
 Square Feet: 1878
 Size: 2856
 Bedrooms: 3
 Bathrooms: 2

Optional Features:

- 12/12 Roof
- 6' Cape
- Dormer
- Window in Gable End
- Dutch Eaves
- Full Eave Return
- Clay Trim Package
- Window Grids
- Window Lineals
- Upgraded Front Door
- Sidelite

Features On-Site
 by Others:

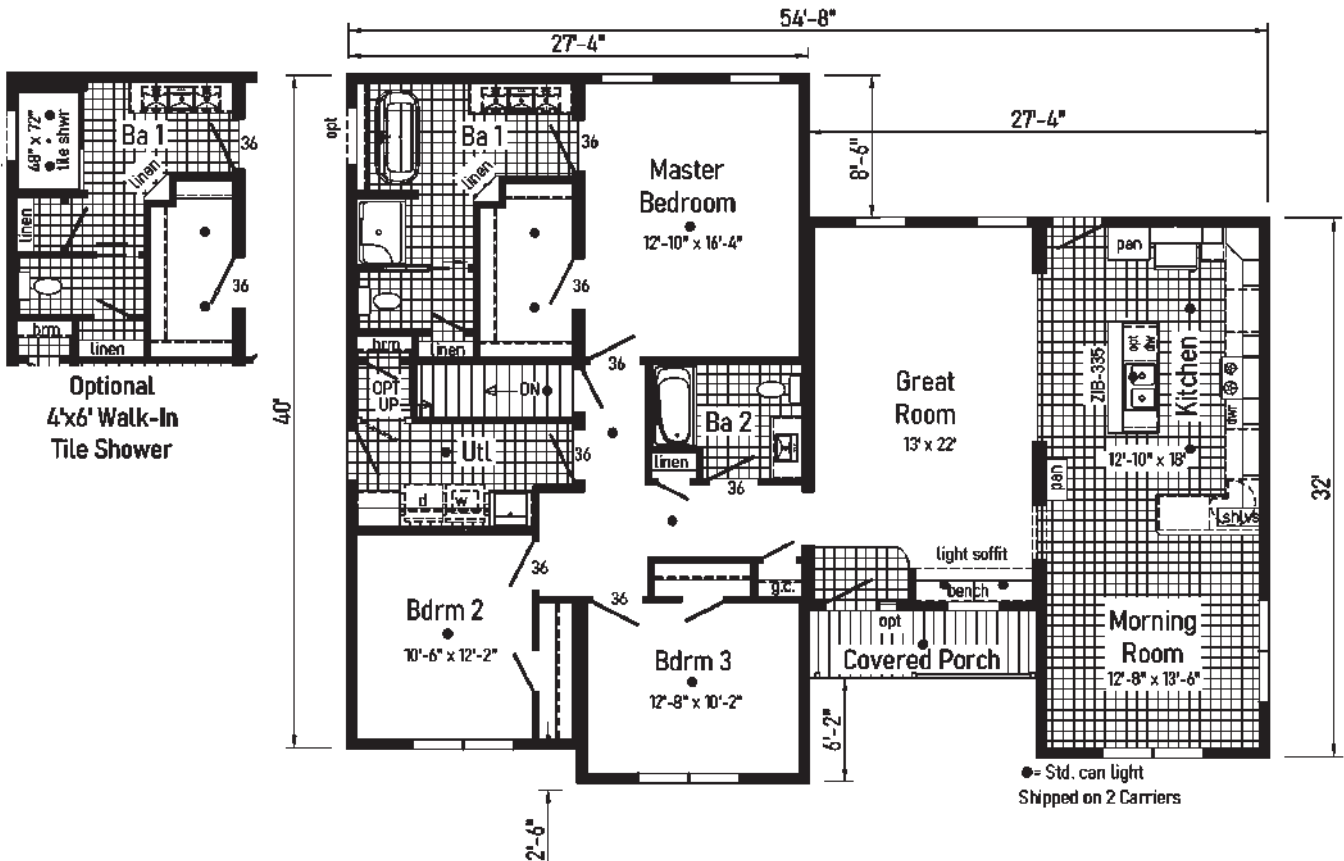
- Stone Facade
- Gable Deco

Some features shown on renderings
 may not be available or will have to be
 done on-site by others



Wiltshire

9M55543A (2M3015-R)



Style: Ranch or Cape
 Square Feet: 1612
 Size: 3254/56
 Bedrooms: 3
 Bathrooms: 2

Optional Features:

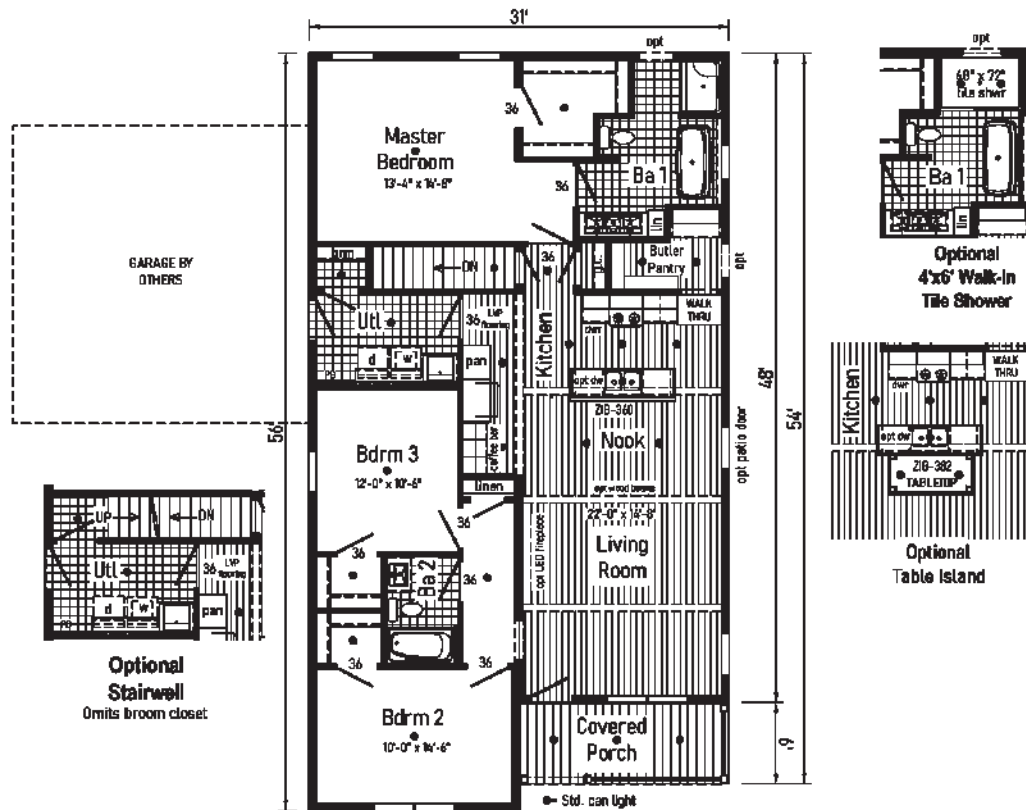
- Vertical Siding
- Black Bundle
- Black Windows
- Black Door
- Black Lineals
- Black Porch Posts & Rails
- Metal Roof Eave



Homestead

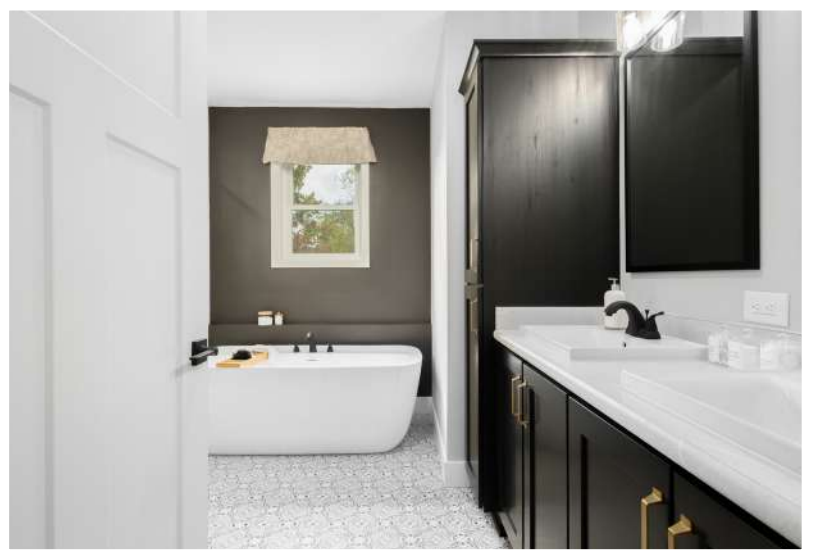
Some features shown on renderings may not be available or will have to be done on-site by others

9M32563A (2M3054-X)





Scan to Watch Video!



*Please use pictures for floorplan vision only.
Decors and materials used are constantly
changed and improved.



Style: Ranch or Cape
 Square Feet: 1943
 Size: 4164/60
 Bedrooms: 3
 Bathrooms: 2

Optional Features:
 - Window at Gable End
 - Shake Siding Accent
 - Window Lineals
 - Upgraded Front Door

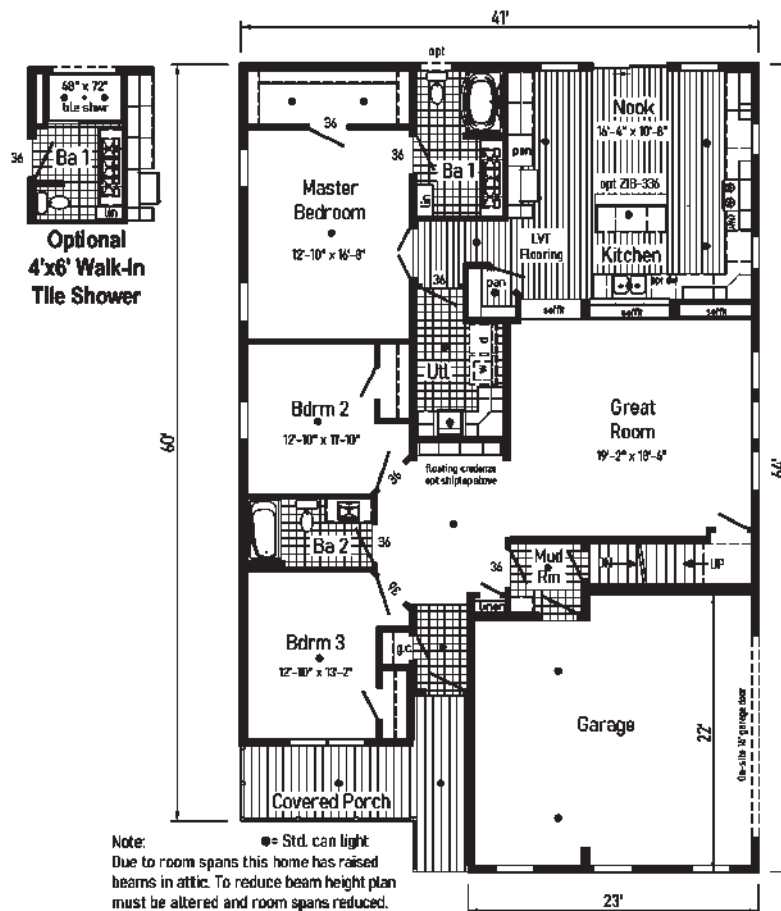
Features On-Site
 by Others:
 - Gutters &
 Downspouts

Leland

9M42643A (4M3001-R)

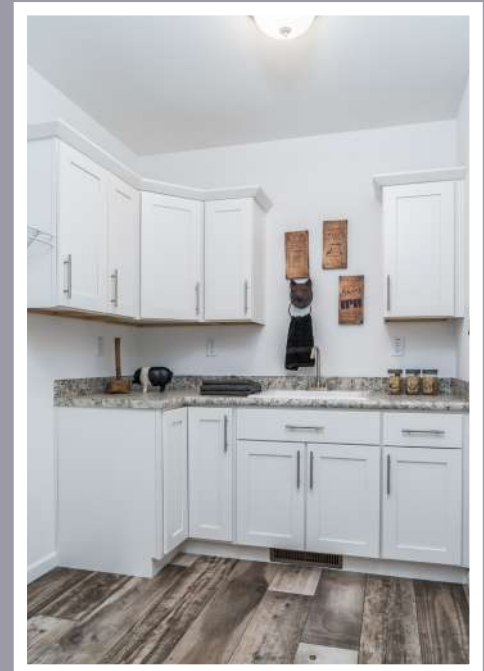
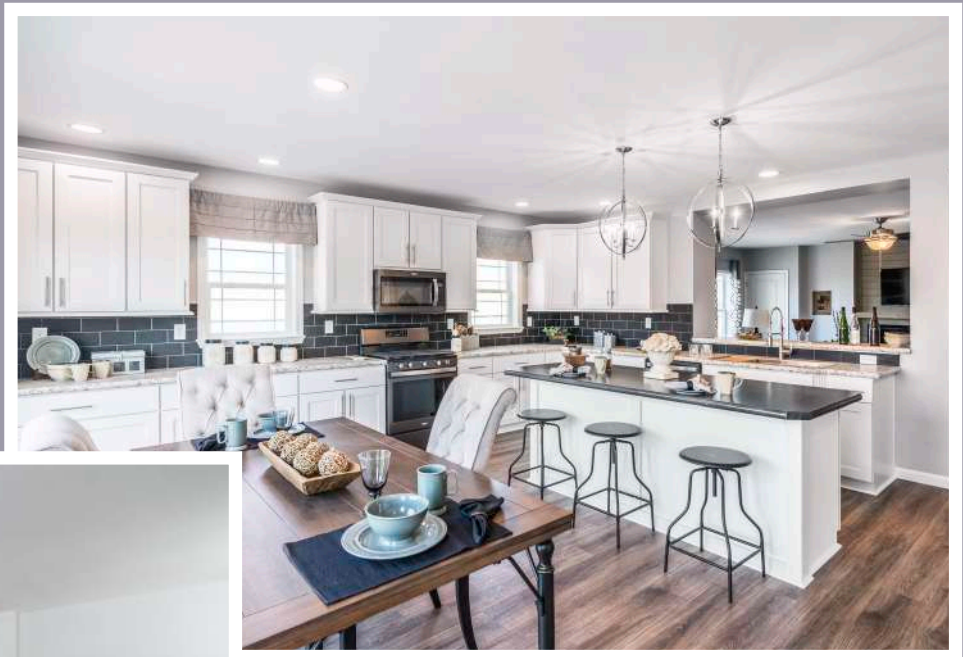
*Note: Window grids shown are no longer available.

Some features shown on renderings may not be available or will have to be done on-site by others





Scan to Watch Video!



*Please use pictures for floorplan vision only.
Decors and materials used are constantly
changed and improved.

Style: Cape
 Square Feet: 1144 - 1st Floor
 518 - 2nd Floor
 Size: 2644
 Bedrooms: 3
 Bathrooms: 3

Optional Features:

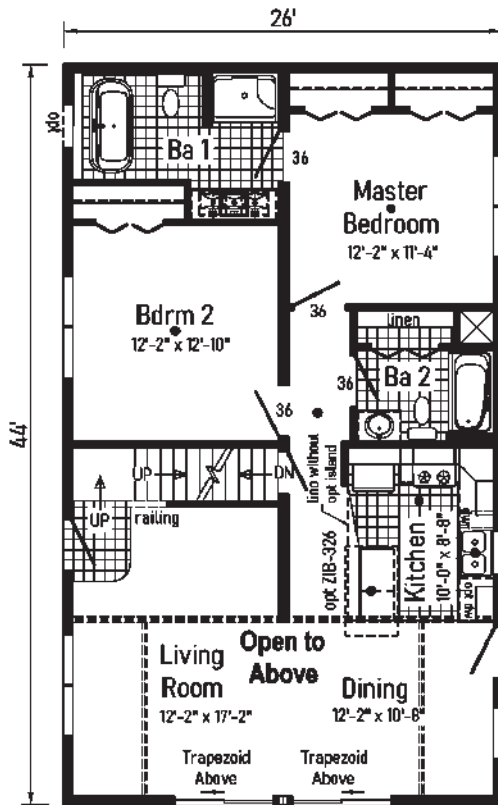
- Market Square Siding
- Stone Accent Siding
- Prowl Roof



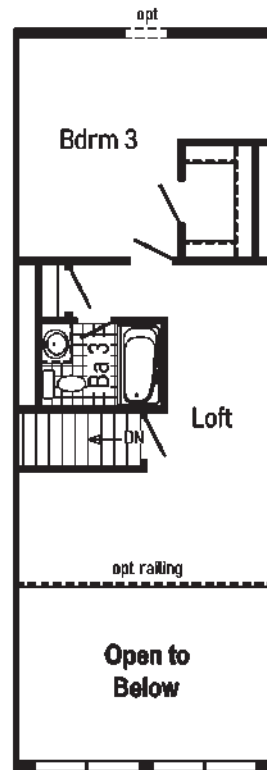
Woodcliff

Some features shown on renderings may not be available or will have to be done on-site by others

9M26442A (2MC3002-N)



● = Std. can light



Second Floor by Others

Proposed Second Floor:
 All design materials and work to be the responsibility of the builders on site to local codes. Light, vent, egress, heating and plumbing are the responsibility of the builder.



Style: Cape
 Square Feet: 1312 - 1st Floor
 830 - 2nd Floor
 Size: 2848
 Bedrooms: 5
 Bathrooms: 3
 Home Office

Optional Features:

- 6' Cape Dormers
- Shake Siding Accent
- Window Lineals
- Window Grids
- Upgraded Front Door

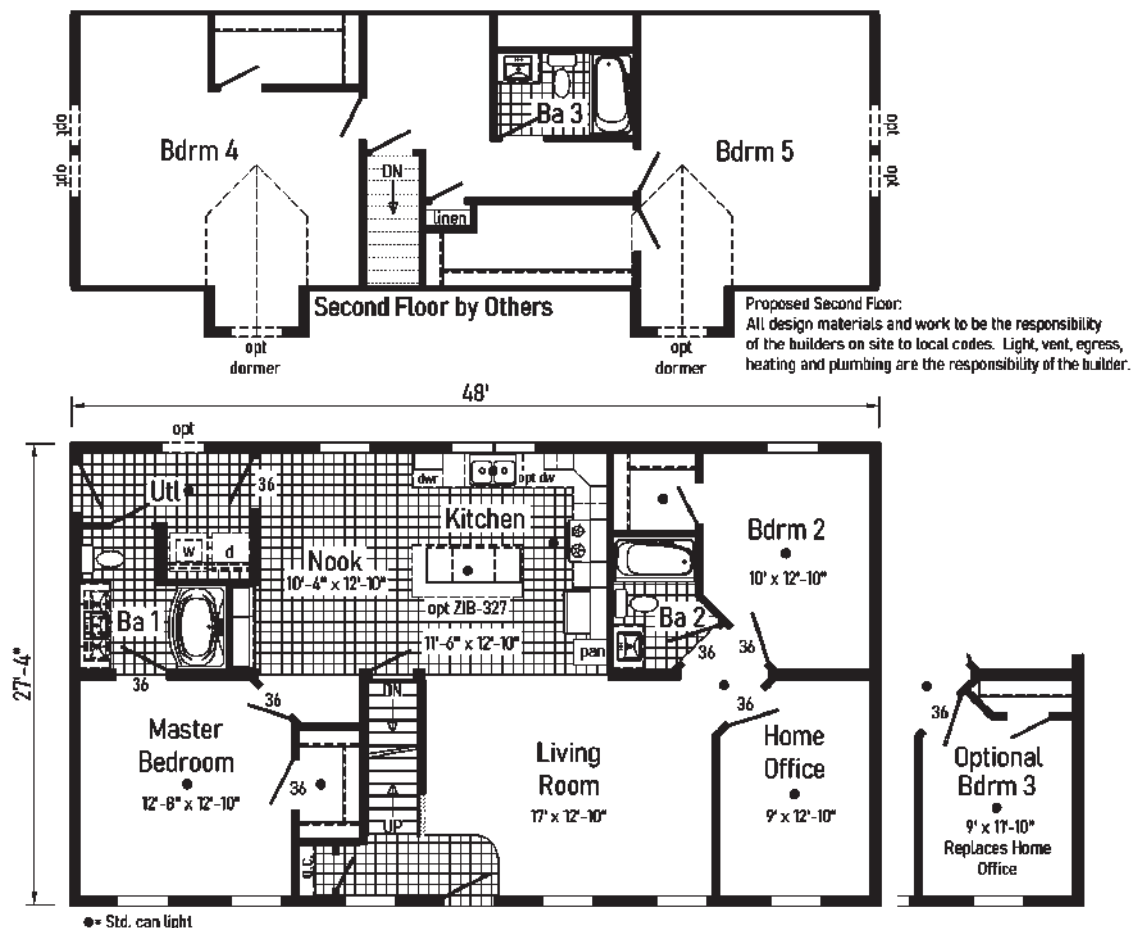
Features On-Site
 by Others:

- Covered Porch
- Gutters and Downspouts

Kensington

9M28482A (2MC3003-R)

Some features shown on renderings may not be available or will have to be done on-site by others



Style: Cape
 Square Feet: 1531 - 1st Floor
 930 - 2nd Floor

Size: 2856
 Bedrooms: 5
 Bathrooms: 3

Optional Features:

- 6' Cape Dormers
- Window Grids
- Market Square Siding
- Shake Siding Accent
- Window in Gable End

Features On-Site

by Others:

- Covered Porch
- Gutters and Downspouts

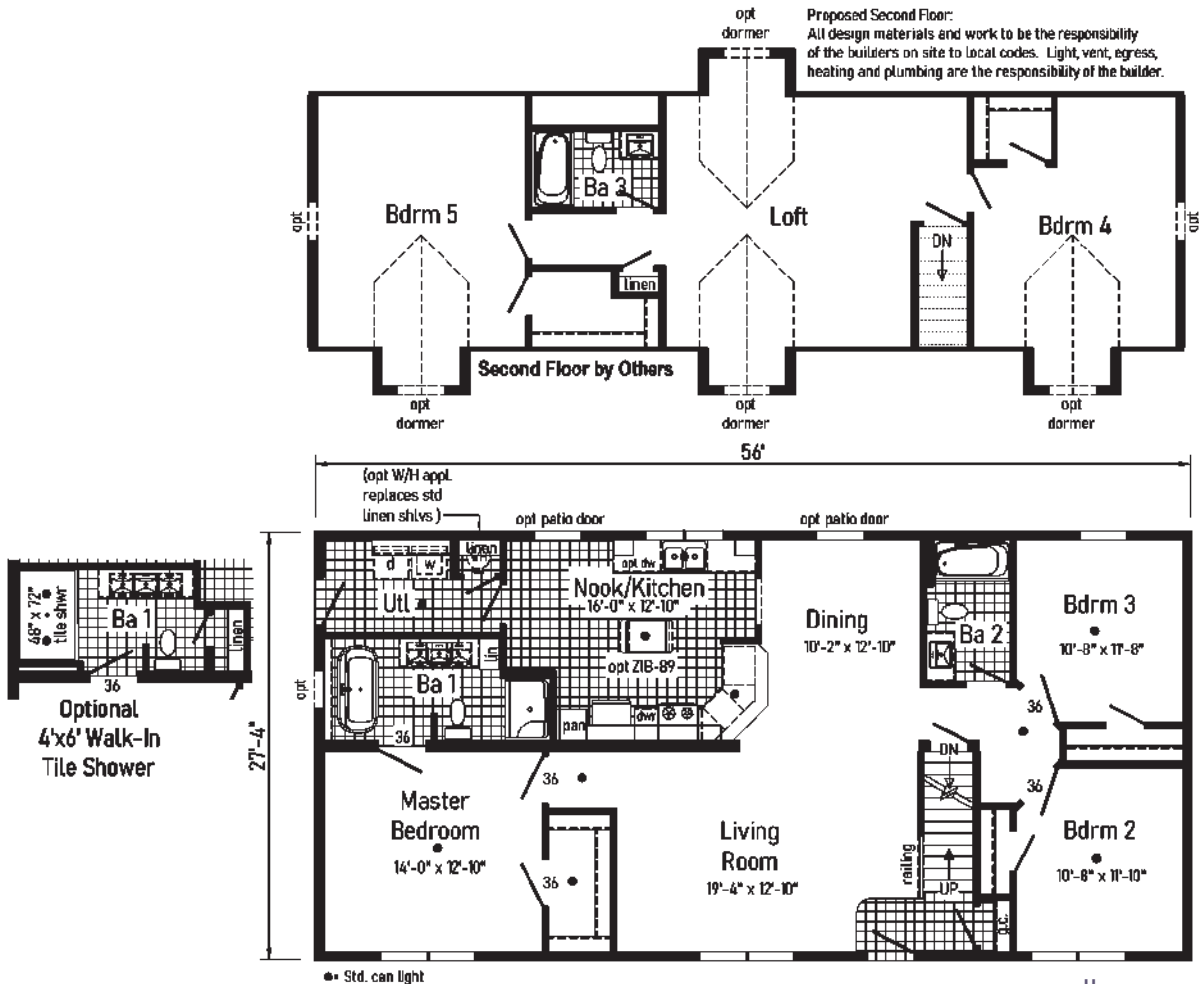
*Note: Door N/A, See Options Brochure for Available Doors

Some features shown on renderings may not be available or will have to be done on-site by others



Covington

9M28562A (2MC3004-R)





Bellissimo 1

9M28583A (2M3401-R)

Style: Ranch or Cape
 Square Feet: 1559
 Size: 2858
 Bedrooms: 3
 Bathrooms: 2

Optional Features:

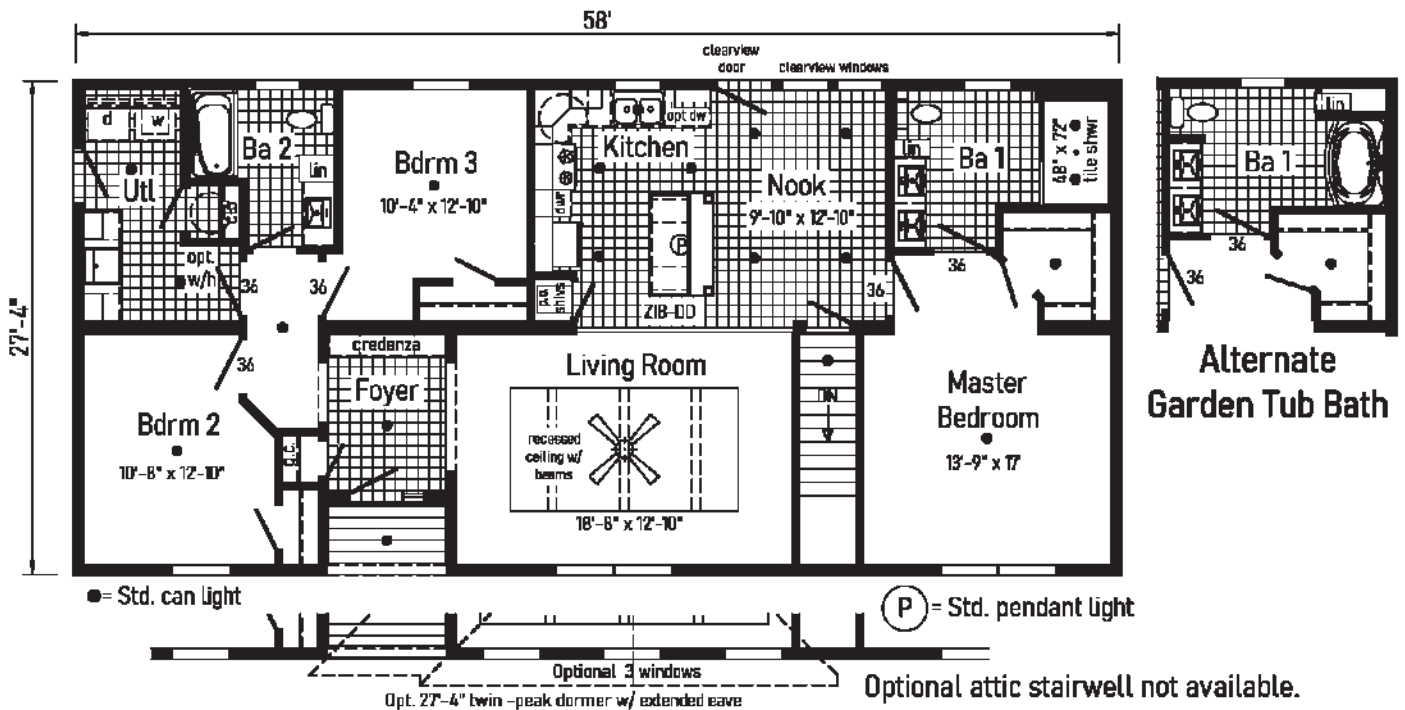
- 7/12 Roof
- 27'-4" Twin Peak Dormer with Full and Extended Eave
- Dutch Eaves
- Vertical Siding
- Shake Siding Accent
- Window Lineals
- Kick Plate
- Additional Windows

Features On-Site by Others:

- Garage
- Gutters & Downspouts

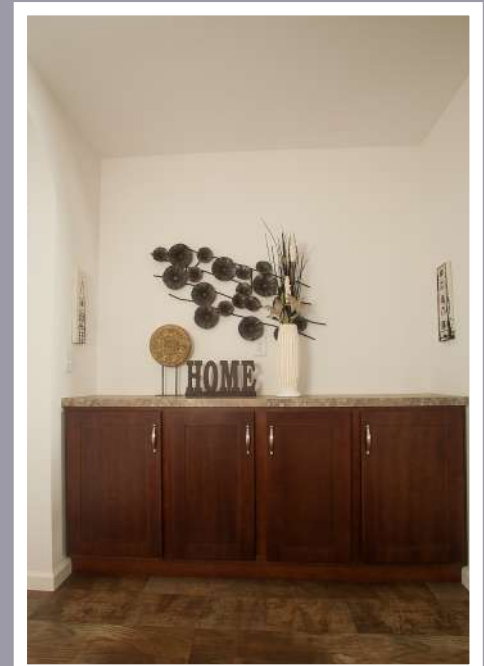
*Note: Door N/A, See Options Brochure for Available Doors

Some features shown on renderings may not be available or will have to be done on-site by others





Scan to Watch Video!



*Please use pictures for floorplan vision only.
Decors and materials used are constantly
changed and improved.

Cabinets & Hardware



American Maple
Mission Flat Panel
Stained



Rustic Elm Oak
Mission Flat Panel
Stained



Shadow Grey
Mission Flat Panel
Stained Oak



White
Mission Flat Panel
Painted Maple



ANSI/KCMA A161.1



Matte Black



Antique Silver



Brushed Gold



Black Onyx
Mission Flat Panel
Painted Maple

CLASSIC CRAFT CABINETRY.

A cornerstone of a good kitchen is the cabinetry. It should look good, perform over time, and adjust to your changing needs. Our Classic Craft KCMA-certified cabinets are strong, good-looking, and built to last.

All of our cabinets are built to the rigorous Kitchen Cabinet Manufacturers Association, and must pass the same testing as Merillat, Marsh, Aristokraft, and the best store-purchased cabinets. If your kitchen is important to you, then why would you want an inferior cabinet?

Simply put, our cabinets are heavier, stronger, and squarer. Our cabinets need to pass many tests, including:

- Overhead cabinets rated to over 500 pounds capacity;
- Drawers opened 25,000 times - and with weight;
- Cabinet doors opened 25,000 times;
- Harsh testing of cabinet finishes.
- Our cabinets are regularly (and randomly) tested by authorized third-parties.

In addition, our KCMA Certified cabinets offer the following:

- 3/4" Adjustable Shelves with Finished Edges in Overhead Kitchen Cabinets
- Hidden Hinges on all Cabinets
- 3/4" Adjustable Half-Shelf in Kitchen Base Cabinet
- Recessed Toe-Kick for Ease of Working at Cabinet
- Precision-Cut and Dadoed Cabinet Components

Through on-going tests performed by an experienced, independent laboratory, the KCMA certification program assures you that any cabinet bearing the blue and white KCMA seal complies with the rigorous standards set by the American National Standards Institute (ANSI) and KCMA. For more details on KCMA certification, visit: www.kcma.org.

Style: Ranch or Cape
 Square Feet: 1709
 Size: 2864
 Bedrooms: 3
 Bathrooms: 2
 Home Office

Optional Features:

- 7/12 Roof
- 27'-4" Twin Peak Dormer with Full and Extended Eaves
- Vertical Siding
- Shake Siding Accent
- Upgraded Front Door

Features On-Site by Others:

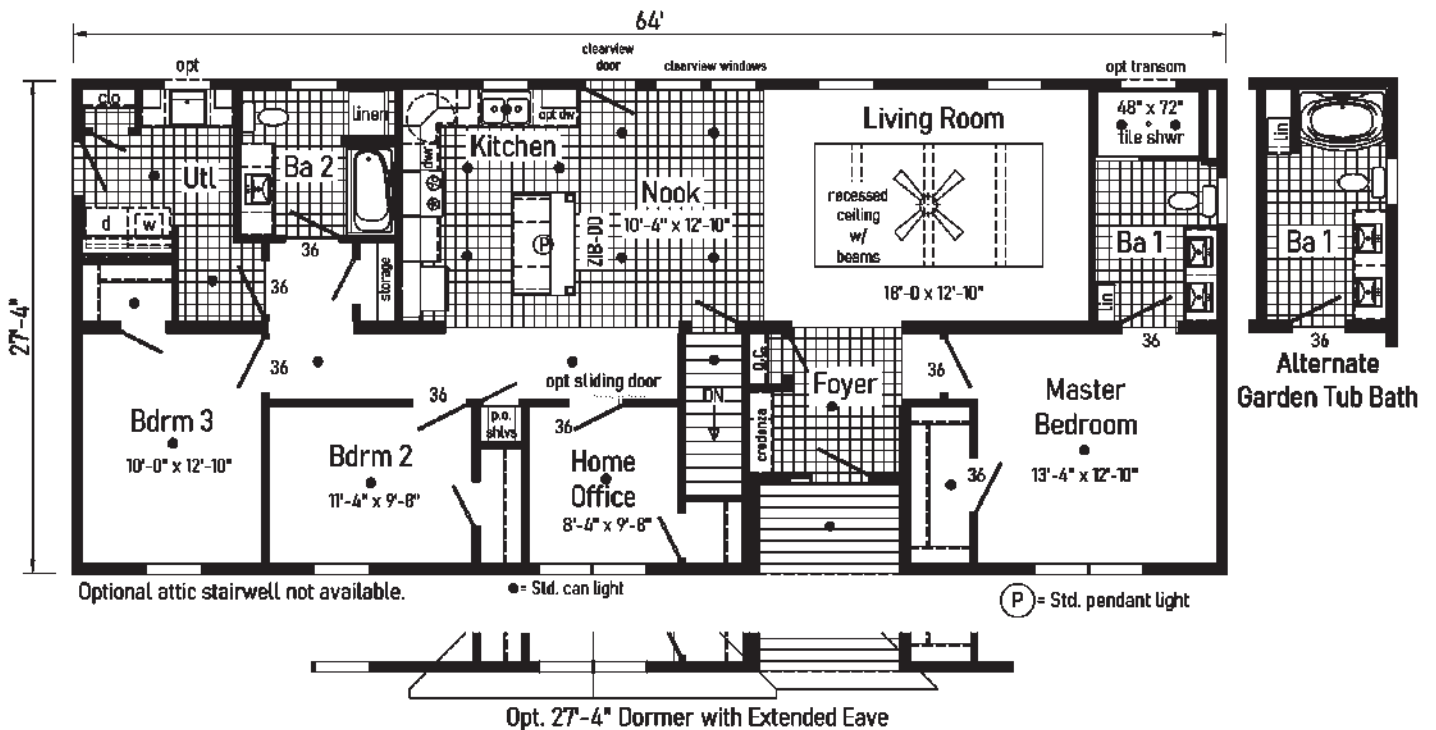
- Garage
- Gutters & Downspouts

Some features shown on renderings may not be available or will have to be done on-site by others



Bellissimo 2

9M28643C (2M3402-R)





Style: 2-Story
 Square Feet: 1560
 Size: 2630
 Bedrooms: 3
 Bathrooms: 2.5

Optional Features:

- Twin Peak Dormer with Bumpout
- Dutch Eaves
- Full Eave Return
- Shake Siding Accent
- Window Grids
- Upgraded Front Door
- Sidelite
- Octagon Window N/A

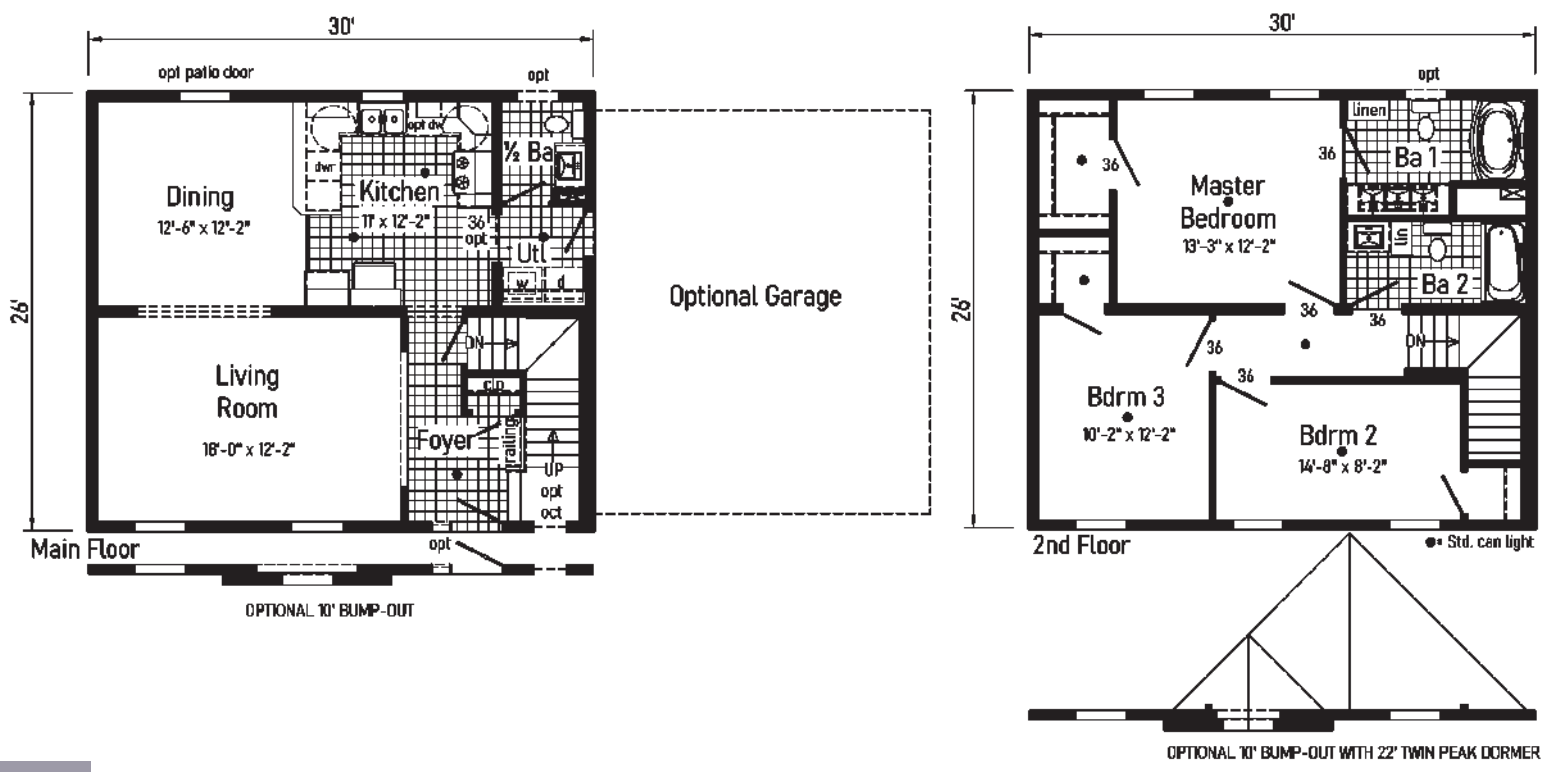
Features On-Site by Others:

- Stone Facade
- Garage
- Covered Front Porch
- Gutters and Downspouts

Some features shown on renderings may not be available or will have to be done on-site by others

Marquette

2M26303B (6M3001-N)



Style: 2-Story
 Square Feet: 2186
 Size: 2840
 Bedrooms: 3
 Bathrooms: 2.5
 Home Office

Optional Features:

- 7/12 Roof
- Full Continuous Eaves
- Vertical Siding
- Window Lineals
- Upgraded Front Door
- Sidelite

Features On-Site

by Others:

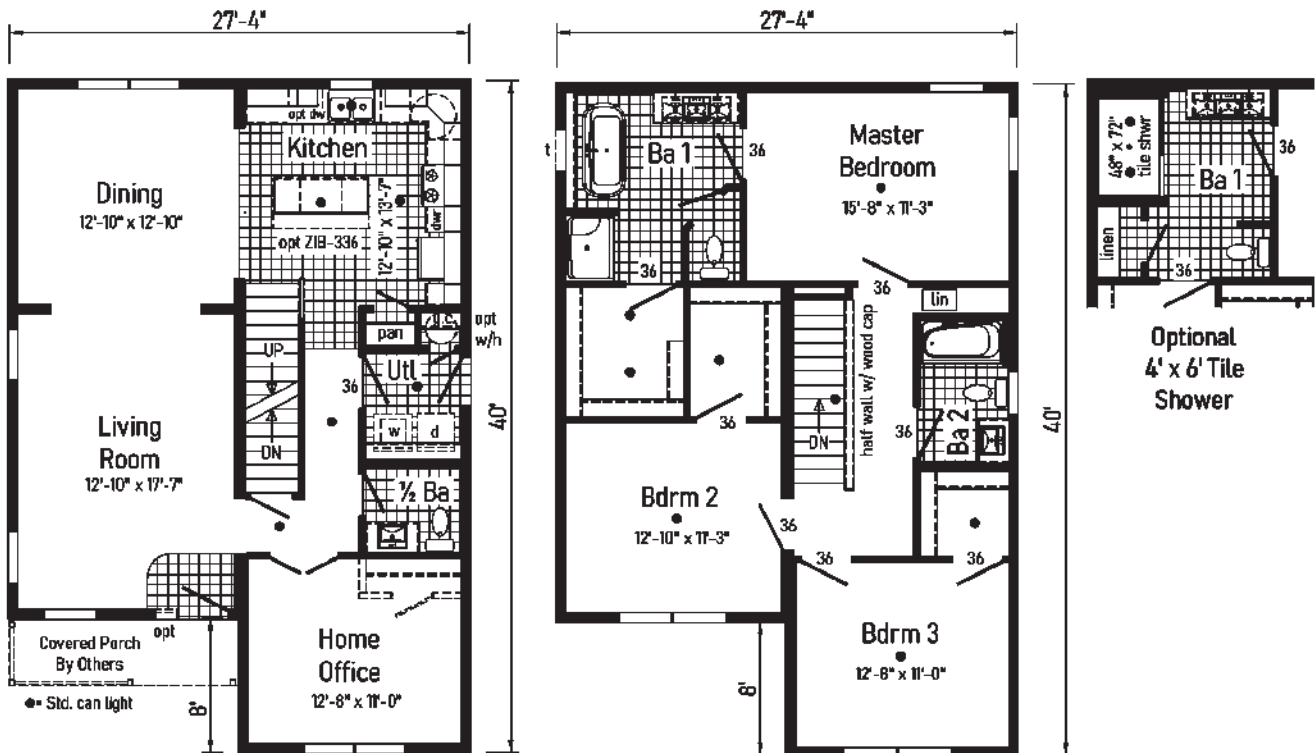
- Brick Facade
- Garage
- Covered Front Porch
- Gutters and Downspouts

Some features shown on renderings may not be available or will have to be done on-site by others



Burlington

2M28363A (6M3018-R)





Style: 2-Story
 Square Feet: 2624
 Size: 2844
 Bedrooms: 4
 Bathrooms: 2.5

Optional Features:

- Flush Dormer
- Upgraded Front Door
- Window Lineals
- Shake Siding

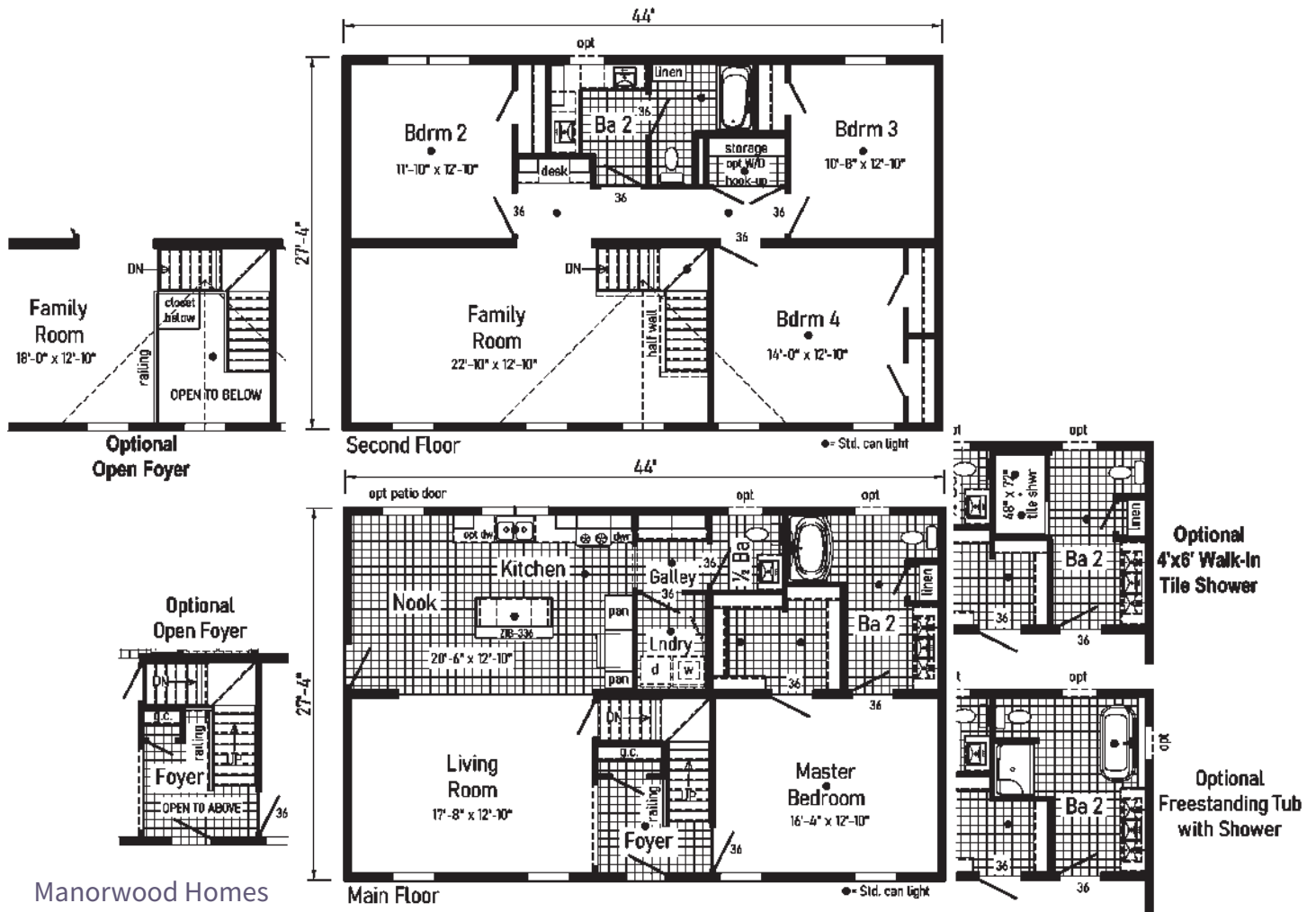
Features On-Site
 by Others:

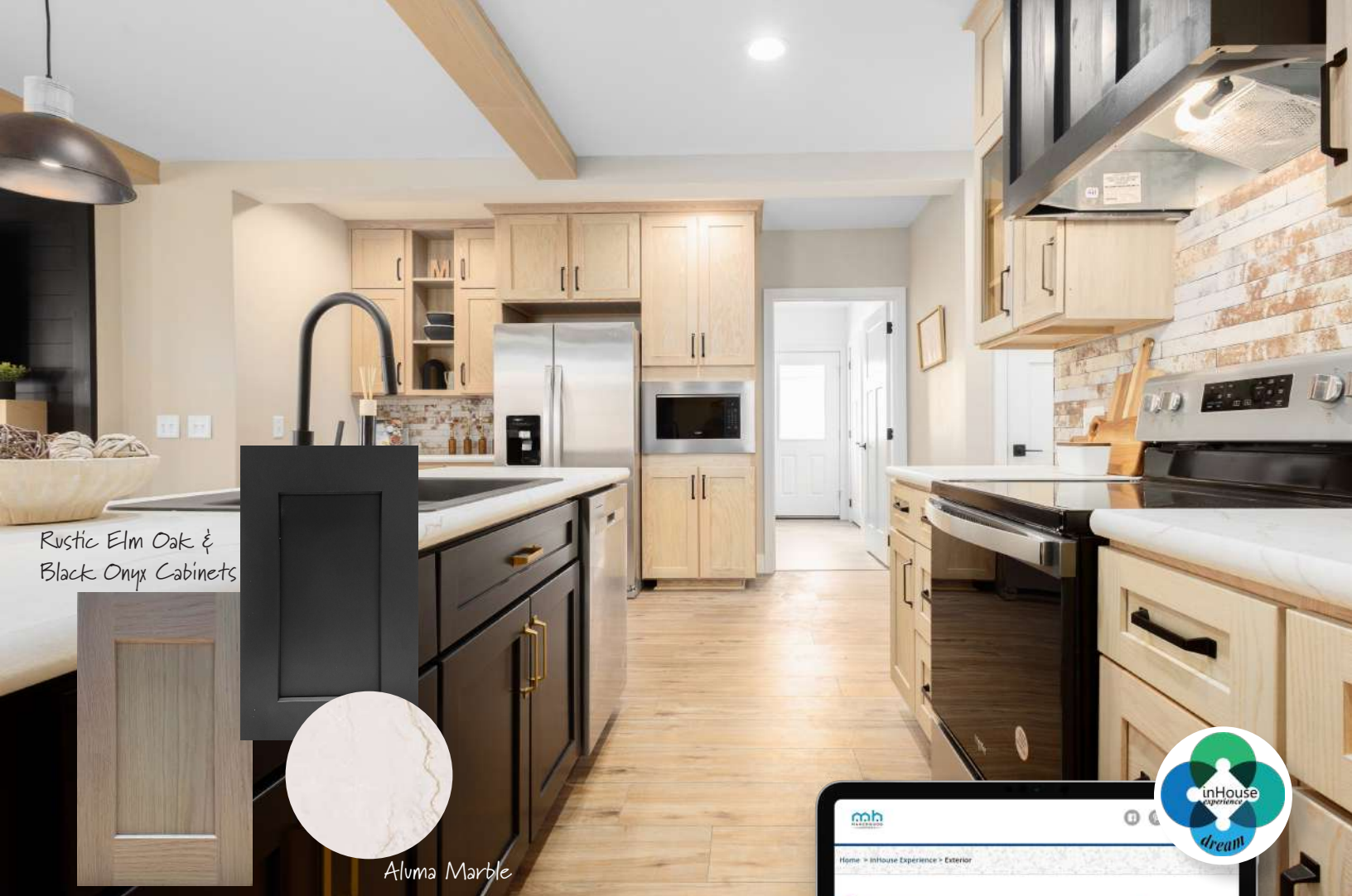
- Garage
- Covered Front Porch

Paramont

2M28444A (6M3026-R)

Some features shown on renderings may not be available or will have to be done on-site by others





Rustic Elm Oak & Black Onyx Cabinets



Aluma Marble



Customize Your Dream Home!



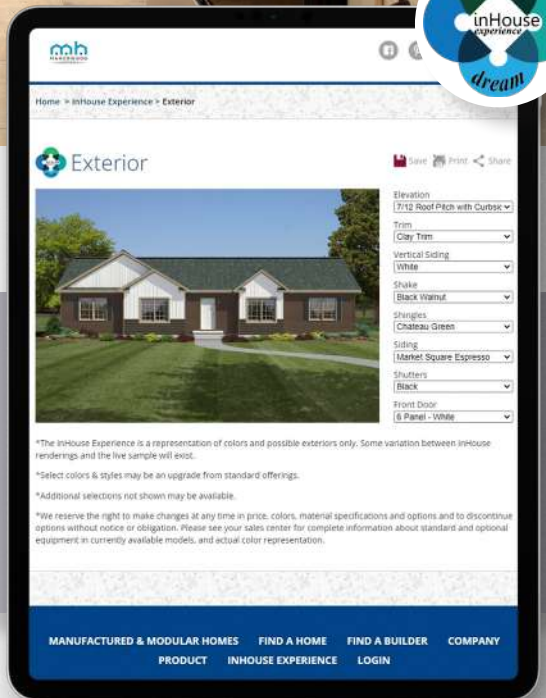
EXTERIOR



BATH



KITCHEN



Customize your dream home colors to see what your house could look like. The exterior InHouse experience allows you to select a Roof Pitch with a Dormer, Siding Color, Shingle Color, Trim Color, Shake Siding, Vertical Siding to get an idea for what your home could look like with the color scheme you have selected.

The InHouse experience gives you the opportunity to design your dream Bathroom or Kitchen. Selections range from your countertop colors, cabinet colors, vinyl floor color, appliances, even down to your kitchen sink!



www.manorwoodhomes.com/inhouse-experience

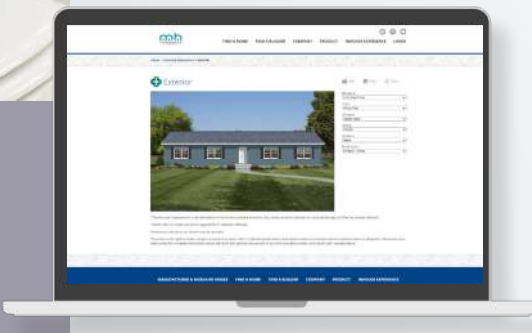


State Route 38
Emlenton, PA 16373
724-867-0189
www.manorwoodhomes.com

Connect with Us!



CLASSIC MANORWOOD



Design your dream home!

Our inHouse Experience allows you to customize your dream home. All color choices are available to help you decide on your design style and create your dream home! Visit our website today to give it a try!



www.manorwoodhomes.com/experience