

# The Huntington

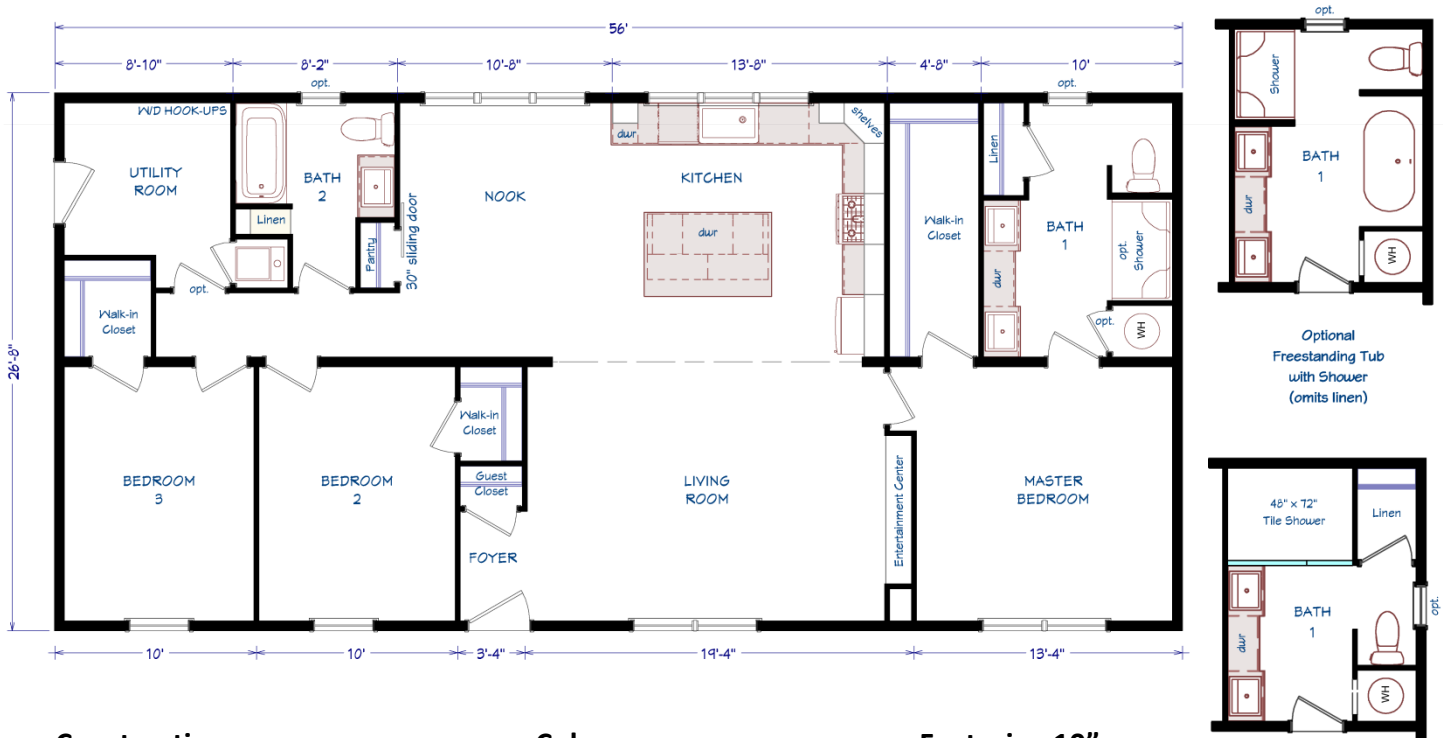
3 Bedroom

2 Bath

28 x 60 (56) / 1,493 s.f.



1083 US Route 2, Berlin, VT  
(802) 229-1592



**Construction:**  
Double-Wide / Multi-Section  
Manufactured Home

**Color:**  
Greystone / White

**Featuring 10"**  
**Eave Overhangs**

*Our Pricing includes Delivery, Installation, Sewer & Water Hook-Up, and Tax (if applicable)*

*[Please see an Installation Guide & Home Consultant for details]*

## Upgrades

- Energy Star (Extra Air Sealing & Insulation, 95% Eff Gas Furnace)
- Ice/Water Shield in Roof
- Flush Dormer with Full Eave
- 24x36 Vinyl Window in Master Bath & in Bath 2
- 3-1/2" White Exterior Lineal Trim on Front Windows
- 3-Lite Craftsman Fiberglass Front Exterior Door
- Half Glass Fiberglass Rear Exterior Door
- Interior Water Shut-Offs / Main Water Shut-Off in Utility
- Exterior Faucet / 40 Gal. Water Heater / Perimeter Heat
- Hardwood Painted Oak Cabinetry Throughout
- 36x60 Fiberglass Shower in Master Bath
- One Piece Tub/Shower in Bath 2
- Framed Mirror in Bath 2
- Paddle Fan w/ Light in Living Room
- LED Recessed Lights in Bedrooms
- (2) TV Jacks
- Interior Door at Water Heater & Utility Room
- 200 Amp Service / Wired also for Electric Range

Village Homes has tried to ensure that our printed materials for all of our homes are comprehensive and factual. We reserve the right, however, to make changes without notice in pricing, options added, specifications, materials, etc. Due to continuous product development and improvements, your home may differ in manufacturing, color and options available at the time of construction. Specifications, dimensions and measurements on printed materials are approximates based on in-house design and/or engineering drawings. Any included images are artist renderings and not intended to be an accurate representation of the home. Renderings and floor plans may be shown with optional features or third party additions.



# Installation Guide

Our Pricing includes DELIVERY, INSTALLATION and TAX (if applicable)

## DOUBLE-WIDE & SINGLE-WIDE Home Installations Include:

## VILLAGE HOMES

SET, LEVEL & LAG HOME TOGETHER (DW)	✓	
SEAL MATE LINE / WALLS WITH EXPANSION FOAM	✓	
FINISH ROOFING	✓	
FINISH SIDING	✓	
HANG ALL INTERIOR DOORS / FINISH MATE WALL	✓	
SEAM CARPETS & FINISH FLOORING	✓	
<b>INSTALL WATER LINE &amp; HEAT TAPE TO SOURCE IN SLAB</b> Line into Slab by Others	✓	
<b>INSTALL SEWER LINE(S) TO DRAIN(S) IN SLAB</b> Line into Slab by Others	✓	
INSTALL ANCHORS / TIE DOWNS	✓	
<b>INSTALL PREMIUM WHITE VINYL SKIRTING</b> Insulated Products - Optional	✓	
INSTALL (2) SETS OF FIBERGLASS STEPS W/ RAILING	✓	
CLEAN HOME (Damp Wipe Surfaces, Broom & Vacuum)	✓	
REMOVE TRASH	✓	
REMOVE AXLES & TIRES	✓	
MANUFACTURERS WARRANTY (New Homes)	✓	
7-10 YEAR LIMITED STRUCTURAL WARRANTY (New Homes)	✓	
HEATING / COOKING FUEL TANK(S) & INSTALLATION Buyer's Fuel Provider is Responsible for Tanks, Connections, Conversion to LP and Diagnostics	<i>Customer</i>	
CONNECT ELECTRICAL WIRE IN SLAB TO ELECTRICAL PANEL	<i>Optional</i>	
EXCAVATION / SLAB PREP / DRIVEWAY / GRADING / SEED & MULCH	<i>Optional</i>	
CONCRETE SLAB / FOUNDATION	<i>Optional</i>	
POLE / PEDESTAL / METER / DISCONNECT / CONDUIT / WIRE	<i>Optional</i>	
WELL / CONNECT TO MUNICIPAL WATER (including line into slab) Pressure Tank & Switch may be Required for Wells	<i>Optional</i>	
SEPTIC SYSTEM / CONNECT TO MUNICIPAL SEWER (including line into slab)	<i>Optional</i>	
GARAGE / DECK / PORCH	<i>Optional</i>	

1083 US Route 2, Berlin, VT 05602 | (802) 229-1592 | sales@VillageHomes.com

**Vermont & New Hampshire's MOST TRUSTED builder  
of Modular & Manufactured Homes**