

The Manchester

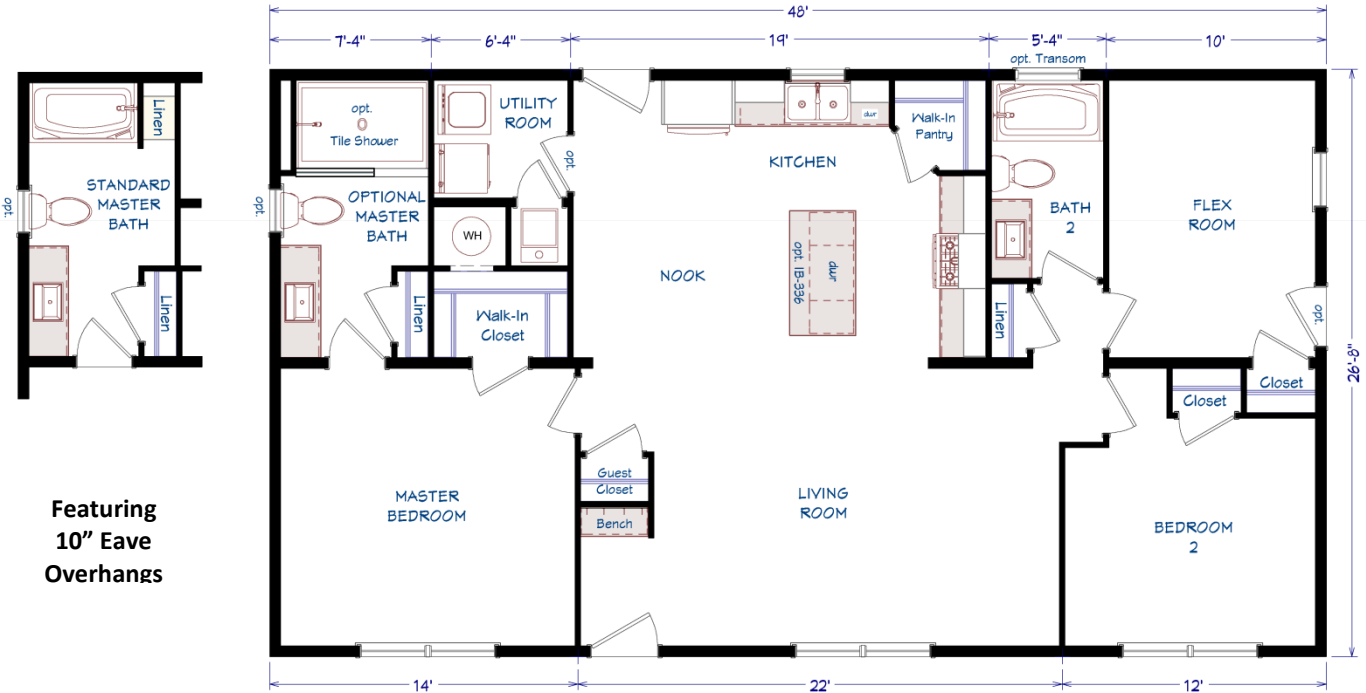
3 Bedroom

2 Bath

28 x 52 (48) / 1,280 s.f.



1083 US Route 2, Berlin, VT
(802) 229-1592



Featuring
10" Eave
Overhangs

Our Pricing includes Delivery, Installation, Sewer & Water Hook-Up, and Tax (if applicable)

[Please see an Installation Guide & Home Consultant for details]

Construction:

Double-Wide / Multi-Section
Manufactured Home

Color:

Carbon / White

Upgrades

- Energy Star (Xtra Air Sealing & Insulation, 95% Eff Gas Furnace)
- 5/12 Roof Pitch with 30 Year Architectural Shingles
- Ice/Water Shield in Roof & Weather Wrap over Ext. Sheathing
- 3-Lite Craftsman Front Fiberglass Exterior Door
- Full View Rear Fiberglass Exterior Door
- Extra Half Glass Fiberglass Exterior Door in Flex Room
- Extra 24x36 Vinyl Window in Master Bath
- Extra Transom Window over Tub/Shower in Bath 2
- Upgraded Market Square Carbon Siding w/ 5" White Corner Posts
- 3-1/2" White Exterior Lineal Trim Around All Windows
- Interior Water Shut Off Valves & Inside Main Water Line Shut Off
- Ext. Water Faucet, 40 Gal. Water Heater, Perimeter Heat Registers
- Black Metal Plumbing Fixtures Throughout
- Pull Down Kitchen Faucet / Adjustable Shower Head in M. Bath
- Vinyl Flooring replacing Carpet in Living Room, Hall & Flex Room
- Upgraded 25oz Carpet in Master Bedroom & Bdrm 2
- Louvered Door at Utility Room / Lever Passage Sets Throughout
- Wire Shelf over Washer/Dryer Area in Utility Room
- Finished Drywall Throughout w/ OSB Exterior Sheathing
- White Moldings w/ Crown, Baseboard & Real Wood Sills
- Hardwood Painted Cabinetry & 36x68 HW Kitchen Island
- Drawers over Base Cabinet Doors in Kitchen
- Refrigerator Surround w/ 27" Deep Cabinet & Side Panels
- Whirlpool Stainless Steel Appliances: 24 c.f. Side-by-Side Refrigerator w/ Water & Ice, 4-Cycle E. Star Dishwasher, Microwave over Deluxe Gas Range
- LED Fireplace on Shiplap Plank Wall
- Crescent Edge Countertops Throughout
- 4' x 6' Walk-In Tile Shower w/ Rainfall Shower Heater, Soap Baskets and (2) LED Recessed Ceiling Lights
- 1 Piece FG Tub Shower in Bath 2 / China Sinks in Both Baths
- Black 2-Arm Wall Lights & Black Framed Mirrors in Baths
- Ceiling Fan with LED Light in Living Room
- (2) Matte Black Dome Lights over Kitchen Island
- Extra LED Recessed Lights in Kitchen (3) & Bedrooms (3)
- (2) TV Jacks / (1) Phone Jack / 200 Amp Panel Box

Village Homes has tried to ensure that our printed materials for all of our homes are comprehensive and factual. We reserve the right, however, to make changes without notice in pricing, options added, specifications, materials, etc. Due to continuous product development and improvements, your home may differ in manufacturing, color and options available at the time of construction. Specifications, dimensions and measurements on printed materials are approximates based on in-house design and/or engineering drawings. Any included images are artist renderings and not intended to be an accurate representation of the home. Renderings and floor plans may be shown with optional features or third party additions.



Installation Guide

Our Pricing includes DELIVERY, INSTALLATION and TAX (if applicable)

DOUBLE-WIDE & SINGLE-WIDE Home Installations Include:

VILLAGE HOMES

| | | |
|---|-----------------|--|
| SET, LEVEL & LAG HOME TOGETHER (DW) | ✓ | |
| SEAL MATE LINE / WALLS WITH EXPANSION FOAM | ✓ | |
| FINISH ROOFING | ✓ | |
| FINISH SIDING | ✓ | |
| HANG ALL INTERIOR DOORS / FINISH MATE WALL | ✓ | |
| SEAM CARPETS & FINISH FLOORING | ✓ | |
| INSTALL WATER LINE & HEAT TAPE TO SOURCE IN SLAB Line into Slab by Others | ✓ | |
| INSTALL SEWER LINE(S) TO DRAIN(S) IN SLAB Line into Slab by Others | ✓ | |
| INSTALL ANCHORS / TIE DOWNS | ✓ | |
| INSTALL PREMIUM WHITE VINYL SKIRTING Insulated Products - Optional | ✓ | |
| INSTALL (2) SETS OF FIBERGLASS STEPS W/ RAILING | ✓ | |
| CLEAN HOME (Damp Wipe Surfaces, Broom & Vacuum) | ✓ | |
| REMOVE TRASH | ✓ | |
| REMOVE AXLES & TIRES | ✓ | |
| MANUFACTURERS WARRANTY (New Homes) | ✓ | |
| 7-10 YEAR LIMITED STRUCTURAL WARRANTY (New Homes) | ✓ | |
| HEATING / COOKING FUEL TANK(S) & INSTALLATION Buyer's Fuel Provider is Responsible for Tanks, Connections, Conversion to LP and Diagnostics | <i>Customer</i> | |
| CONNECT ELECTRICAL WIRE IN SLAB TO ELECTRICAL PANEL | <i>Optional</i> | |
| EXCAVATION / SLAB PREP / DRIVEWAY / GRADING / SEED & MULCH | <i>Optional</i> | |
| CONCRETE SLAB / FOUNDATION | <i>Optional</i> | |
| POLE / PEDESTAL / METER / DISCONNECT / CONDUIT / WIRE | <i>Optional</i> | |
| WELL / CONNECT TO MUNICIPAL WATER (including line into slab) Pressure Tank & Switch may be Required for Wells | <i>Optional</i> | |
| SEPTIC SYSTEM / CONNECT TO MUNICIPAL SEWER (including line into slab) | <i>Optional</i> | |
| GARAGE / DECK / PORCH | <i>Optional</i> | |

1083 US Route 2, Berlin, VT 05602 | (802) 229-1592 | sales@VillageHomes.com

**Vermont & New Hampshire's MOST TRUSTED builder
of Modular & Manufactured Homes**